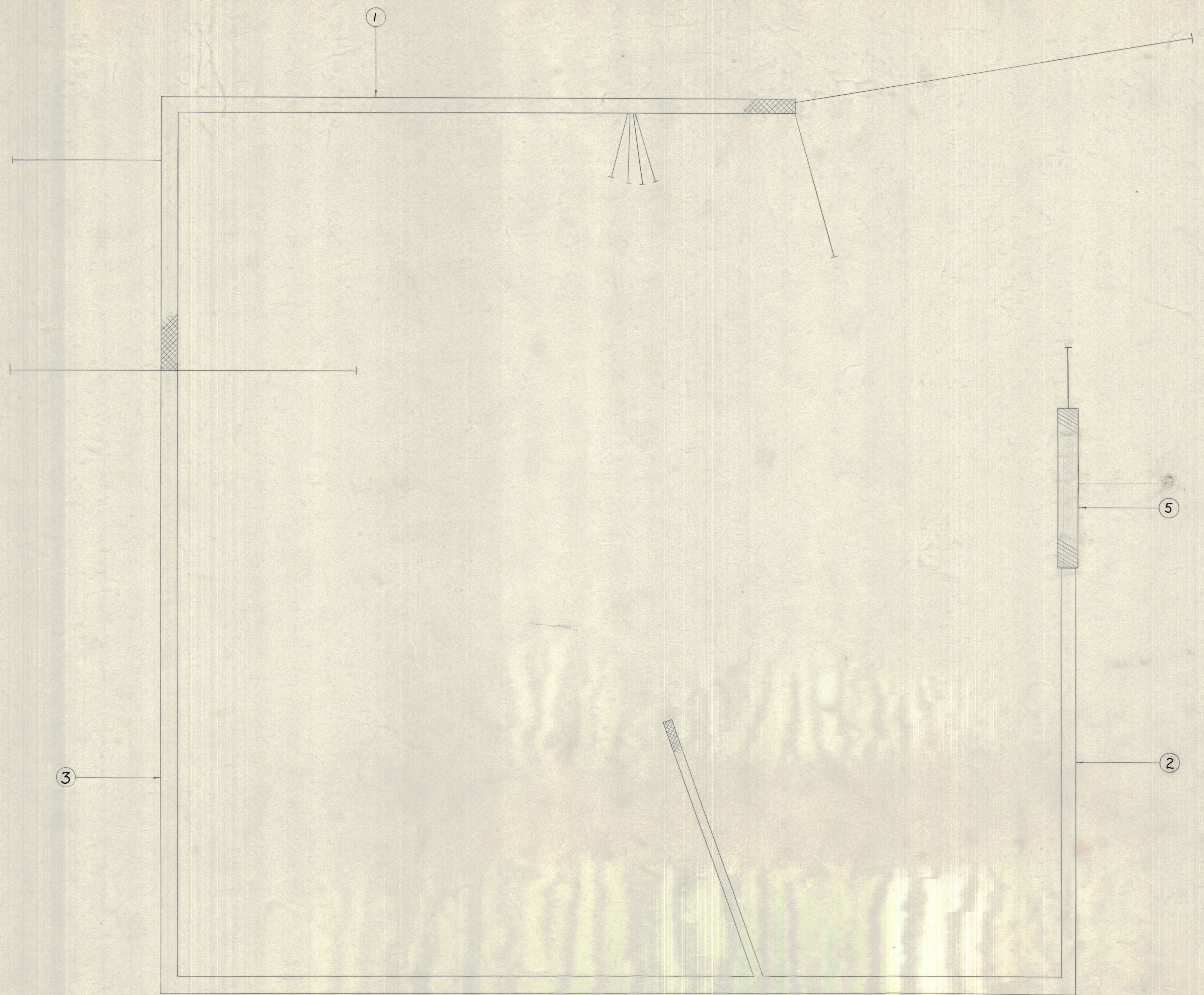


IF IT IS FOUND DESIRABLE TO CHANGE ANY TOLERANCE OR OTHER DETAIL SPECIFIED ON THIS DRAWING NOTIFY THE PURCHASER PROMPTLY.
 MAXIMUM ALLOWABLE TOLERANCES HAVE BEEN DETERMINED AND DEVIATIONS WILL BE CAUSE FOR REJECTION.
 REMOVE ALL BURRS AND SHARP EDGES

NOTICE TO PERSONS RECEIVING THIS DRAWING

THE TECHNICAL MATERIEL CORPORATION claims proprietary right in the material disclosed herein. This drawing is issued in confidence for engineering information only and may not be reproduced or used to manufacture anything shown hereon without permission from THE TECHNICAL MATERIEL CORPORATION to the user. This drawing is loaned for mutual assistance and is subject to recall at any time.

Property of:
 THE TECHNICAL MATERIEL CORPORATION
 MAMARONECK, NEW YORK



BOTTOM VIEW

NOTE:
 LAY ITEM 1 & 2 ON BOARD FIRST,
 THEN LAY ITEM 3 ON TOP &
 LACE TOGETHER.

OBSELETE

OBS. 10-1-57
 This cable is incorporated
 in one dwg. # CA-245 (F)
 8Size

3	5	PX-100-1-166	SLEEVING
X	4	CD-100-2	LACING, CORD
1	3	CA-245	MAIN CABLE ASS'Y.
1	2	CA-270	CABLE, LIMITER
1	1	CA-258	FILAMENT & AC. LINE CABLE

REQ. ITEM	PART NO.	DESCRIPTION	SYMBOL
THE TECHNICAL MATERIEL CORP. MAMARONECK, NEW YORK			
CABLE ASSEMBLY			
MATERIAL		GPR	
TYPE & TEMPER		B 113-56 III	
HEAT TREAT. SPEC.		DRAWN A. J. J. ELEC. DES. APP. MECH. DES. APP.	
FINISH & SPEC. NO.		CHECKED A. J. J. FINAL APPROVAL	

A	1	ITEM 5 ADDED	2-1-56	1	PS	ADD	III
ISSUE	ITEM	CHANGED FROM	DATE	CN. NO.	DRAFTS	CHECKER	ENG. APP.
TOLERANCES		SCALE:					
ALL OTHERS	DEC. DIM. ±	DRILL, PUNCH, COMMERCIAL STOCK					
	FRAC. DIM. ±	SIZES AND MANUFACTURERS					
	ANGULAR DIM. ±	TOLERANCES ARE NOT INCLUDED.					

1	GPR	PROJECT NO.	ASSY. NO.	DATE	1-13-56
REQ. PER UNIT	MODEL	USED ON		FINISH & SPEC. NO.	

CA-279
 A