

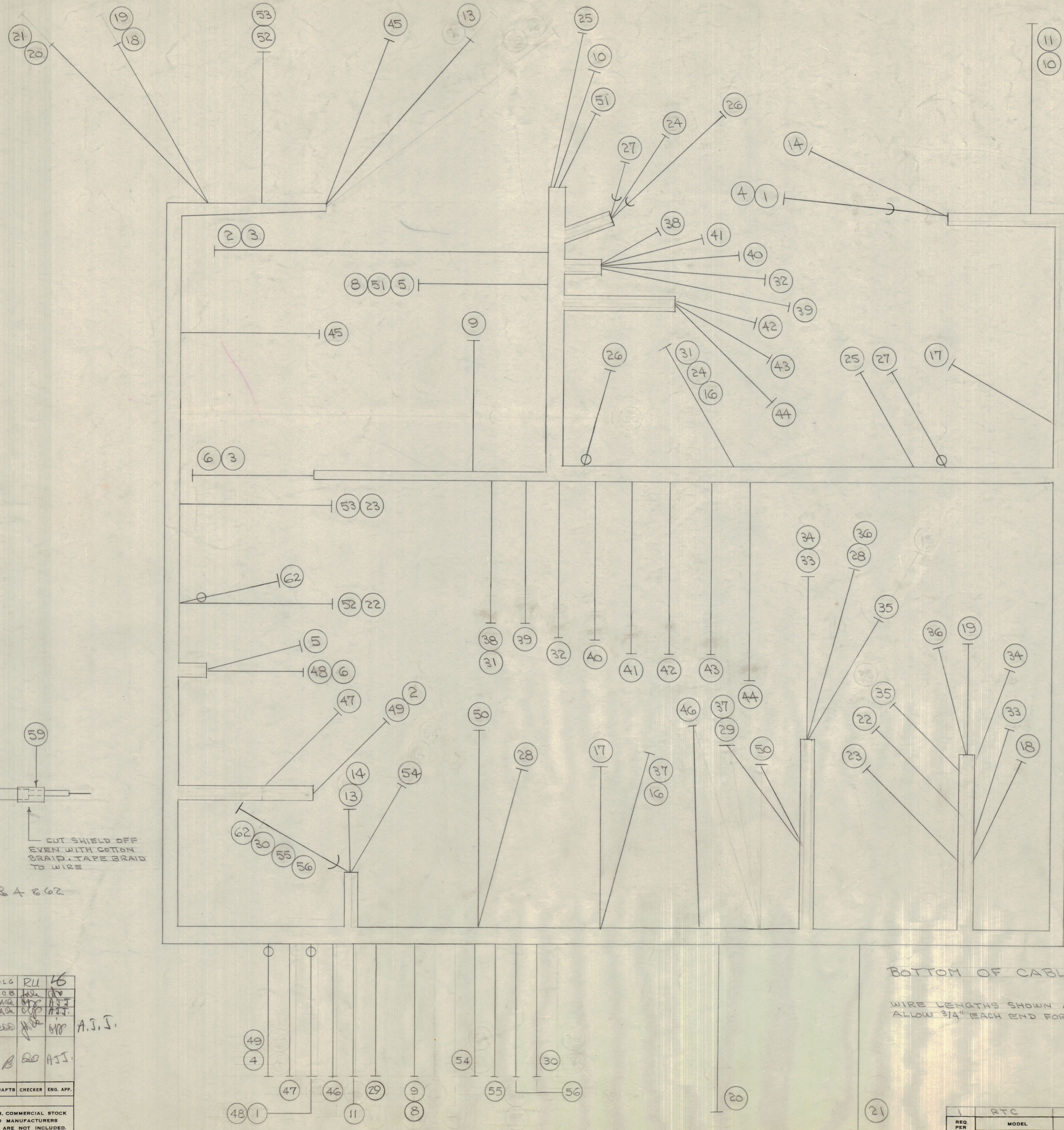
IF IT IS FOUND DESIRABLE TO CHANGE ANY TOLERANCE OR OTHER DETAIL SPECIFIED ON THIS DRAWING NOTIFY THE PURCHASER PROMPTLY.
 MAXIMUM ALLOWABLE TOLERANCES HAVE BEEN DETERMINED AND DEVIATIONS WILL BE CAUSE FOR REJECTION.
 REMOVE ALL BURRS AND SHARP EDGES

NOTICE TO PERSONS RECEIVING THIS DRAWING

THE TECHNICAL MATERIEL CORPORATION claims proprietary right in the material disclosed hereon. This drawing is issued in confidence or engineering information only and may not be reproduced or used to manufacture any item shown hereon without permission from THE TECHNICAL MATERIEL CORPORATION to the user. This drawing is loaned for mutual assistance and is subject to recall at any time.

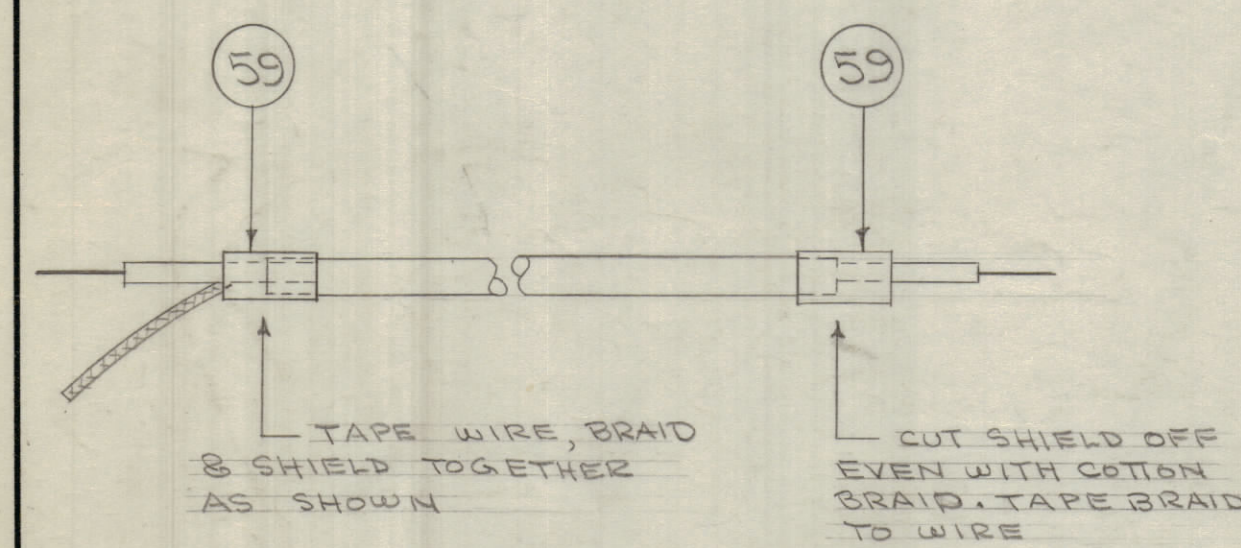
Property of:

THE TECHNICAL MATERIEL CORPORATION
 MAMARONECK, NEW YORK



FOR ITEMS 26 & 27
 FOR ITEM 27
 (CUT SLEEVING TO COVER SHIELD COMPLETELY.)

REQ. ITEM	PART NO.	DESCRIPTION	COLOR	SYMBOL
15 3/4	62	WI-101-2	CABLE, SHIELD, C.C.	
61	PX-100-1-100	INSULATION, SLEEVING	BLACK	
60	WI-101-4	CABLE, SHIELD FLEX.		
X 59	TA-103-3	TAPE		
X 58	BS-100	SOLDER, SOFT		
X 57	CD-101-3MW	LACING CORD		
16 3/4	50	MWC 22(7)U3	CABLE, INSULATED	ORANGE
16 3/4	55	MWC 22(7)U96		WHY/BLUE
9 1/2	54			PINK
14	53	1		BROWN
16	52	91		WHY/BRN
7 1/2	51	5		GREEN
14 3/4	50	6		BLUE
13	49	90		WHY/BLK.
14 1/2	48	4		YEL
13 3/4	47	94		WHY/YEL
14 1/4	46	0		BLACK
12 1/4	45	0		"
16 3/4	44	4		YEL
14 1/2	43	94		WHY/YEL
13	42	3		OR.
13	41	90		WHY/BLK
12 1/2	40	1		VIOLET
12 1/4	39	93		WHY/R.
11	38	2		RED
12 1/2	37	2		"
16 3/4	36	92		WHY/RED
17	35	4		YEL
15 3/4	34	PINK		PINK
15 3/4	33	96		WHY/BLUE



DETAIL - ITEMS 18 & 4 & 62

START PIGTAIL
 END SHIELD UNDER LACING

BOTTOM OF CABLE

WIRE LENGTHS SHOWN ARE TOTAL LENGTHS AND ALLOW 3/4" EACH END FOR STRIPPING & TINNING.

ISSUE	ITEM	CHANGED FROM	DATE	CN. NO.	DRAFTS	CHECKER	ENG. APP.
F	1	WIRE NOS. CHGD FROM 5818 TO MWC	6-27-54	5126	DLG	RU	16
E	1	Items 58 & 29 Relocated	3-20-54	8526	JOB	DLG	16
D	1	ITEM 62 RELOCATED	10/10/54	4	DLG	DLG	16
C	1	ITEM 33 WAS PINK	6/18/56	3	DLG	DLG	16
B	2	ITEM 62 ADDED	1/19/56	2	DLG	DLG	16
A	1	WIRE LENGTHS ADDED					
A	2	# 13, 18, 20, & 35 SHORTENED	3/2/54	1	DLG	DLG	16
A	3	# 51 WAS GRAY					
A	4	# 13, 18, 20, & 35 SHORTENED					
A	5	WIRE POS. MOVED					

CA-268 F

REQ. ITEM	PART NO.	DESCRIPTION	COLOR	SYMBOL
12	32	MWC 22(7)U92	CABLE, INSULATED	WHY/RED
11 1/4	31	U2		RED
11 1/2	30	U8		GRAY
15	29	U2		RED
17 1/4	28	U92		WHY/RED
17 1/2	27	MWC 22(7)S 2		RED SHIELD
12	26	WI-101-4	CABLE, SHIELD	WHITE
17 1/4	25	MWC 22(7)U3	CABLE, INSULATED	OR.
14	24	9		WHITE
30 1/4	23	1		BROWN
29 1/4	22	91		WHY/BRN
30 3/4	21	8		GRAY
33 1/4	20	9		WHITE
39	19	7		VIO.
38	18	90		WHY/BLK
24 1/2	17	PINK		PINK
29 3/4	16	MWC 22(7)U2		RED
	15	DELETED		WHY/BLUE
34	14	MWC 22(7)U92		WHY/RED
21 1/4	13	MWC 22(7)U92		"
	12	DELETED		"
33 3/4	11	MWC 22(7)U7		VIO.
26 1/2	10	7		"
31 1/4	9	6		BLUE
38 1/4	8	MWC 22(7)U5		GRN.
	7	DELETED		"
49 3/4	6	MWC 22(7)U4		YEL
48	5	MWC 22(7)U92		WHY/RED
35 3/4	4	WI-101-2	CABLE, SHIELD C.C.	WHITE
18 1/4	3	MWC 22(7)U92	CABLE, INSULATED	WHY/RED
52	2	MWC 22(7)U90		WHY/BLK
35 3/4	1	WI-101-2	CABLE, SHIELD, C.C.	WHITE

THE TECHNICAL MATERIEL CORP. MAMARONECK, NEW YORK			
STOCK SIZE			
CABLE ASSEMBLY			
MATERIAL WEIGHT PER FC			
TYPE & TEMPER			
DRAWN			
HEAT TREAT. SPEC.			
FINISH & SPEC. NO.			

REQ. PER UNIT	MODEL	PROJECT NO.	ASSY. NO.	DATE
1	RTC			12-5-55

CA-268 F