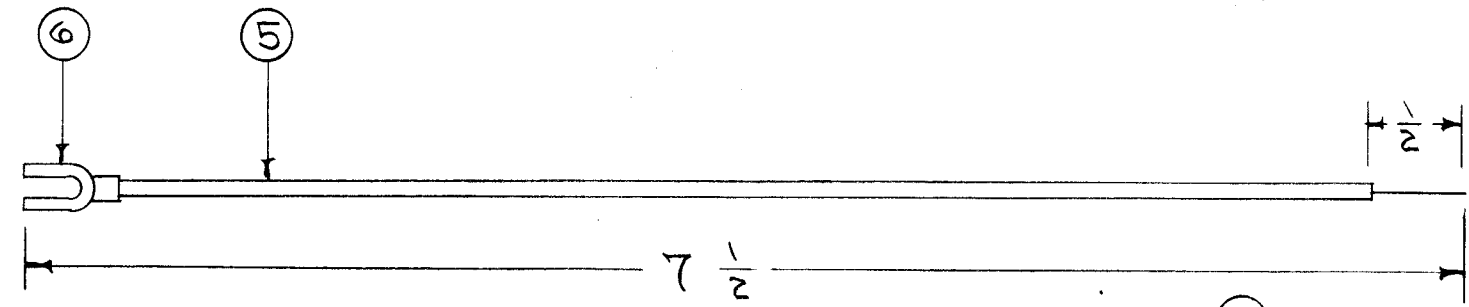
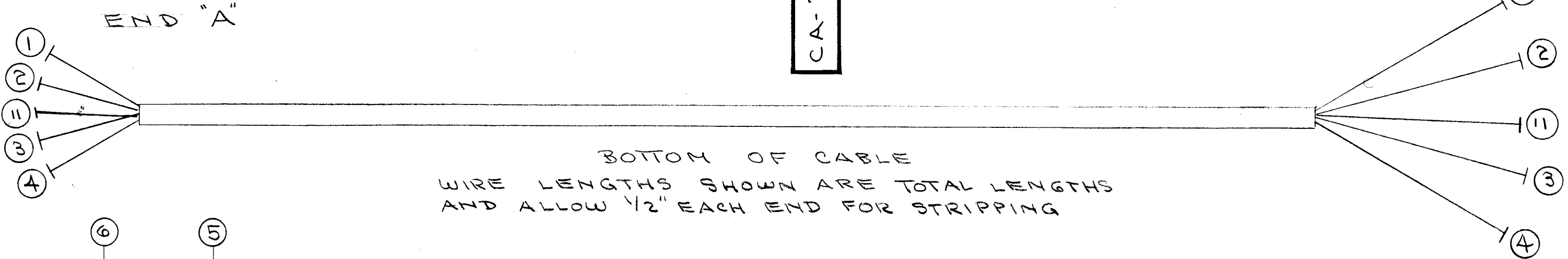


IF IT IS FOUND DESIRABLE TO CHANGE ANY TOLERANCE OR OTHER DETAIL SPECIFIED ON THIS DRAWING NOTIFY THE PURCHASER PROMPTLY.

MAXIMUM ALLOWABLE TOLERANCES HAVE BEEN DETERMINED AND DEVIATIONS WILL BE CAUSE FOR REJECTION. REMOVE ALL BURRS AND SHARP EDGES

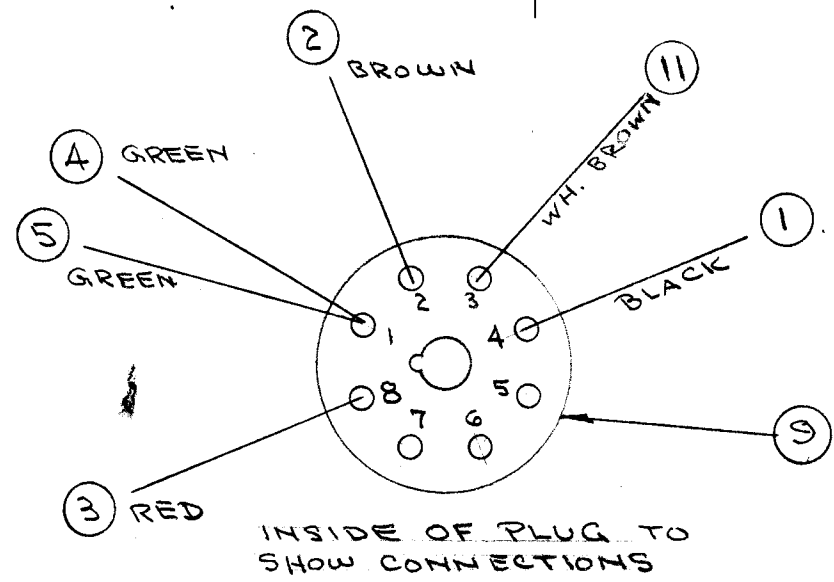
CA-255 B



NOTICE TO PERSONS RECEIVING THIS DRAWING

THE TECHNICAL MATERIEL CORPORATION claims proprietary right in the material disclosed hereon. This drawing is issued in confidence for engineering information only and may not be reproduced or used to manufacture anything shown hereon without permission from THE TECHNICAL MATERIEL CORPORATION to the user. This drawing is loaned for mutual assistance and is subject to recall at any time.

Property of:
THE TECHNICAL MATERIEL CORPORATION
MAMARONECK, NEW YORK



ASSEMBLY DETAIL END "A"

16	11	SRIR ^{3/5} (7) 22U91	CABLE, INSULATED WH- BR
1	10	PL-129	SHELL, PLUG
1	9	PL-127	PLUG
X	8	BS-100	SOLDER, SOFT
X	7	CD-100-1	LACING CORD
1	6	TE-120-1	LUG
7 1/2"	5	SRIR ^{3/5} (7) 22U55	CABLE, INSULATED GRN
16"	4		55 GRN
16"	3		22 RED
16"	2		11 GRN
16"	1		00 BLK.

REQ. ITEM	PART NO.	DESCRIPTION	SYMBOL
THE TECHNICAL MATERIEL CORP. MAMARONECK, NEW YORK			
CABLE ASSY., GPC CAL.			
STOCK SIZE		GPC.	
MATERIAL		WEIGHT PER PC.	
TYPE & TEMPER		CD. 9/27/55 HH WDC	
HEAT TREAT. SPEC.		DRAWN ELEC. DES. APP. MECH. DES. APP.	
FINISH & SPEC. NO.		CHECKED G.T.O. FINAL APPROVAL	

B	1	ITEM 10 DELETED	7/31/56	2	HH	PTK	AJT
A	2	WIRE LENGTHS WERE 14 3/8	11/23/55	1	HH	HH	G.T.O.
	1	ITEM 11 ADDED					

TOLERANCES		SCALE:	
ALL OTHERS	DEC. DIM. ± FRAC. DIM. ± ANGULAR DIM. ±	DRILL, PUNCH, COMMERCIAL STOCK SIZES AND MANUFACTURERS TOLERANCES ARE NOT INCLUDED.	

1	GPC			9/27/55
REQ. PER UNIT	MODEL	PROJECT NO.	ASSY. NO.	DATE
USED ON				

CA-255 B