

IF IT IS FOUND DESIRABLE TO CHANGE ANY TOLERANCE OR OTHER DETAIL SPECIFIED ON THIS DRAWING NOTIFY THE PURCHASER PROMPTLY.

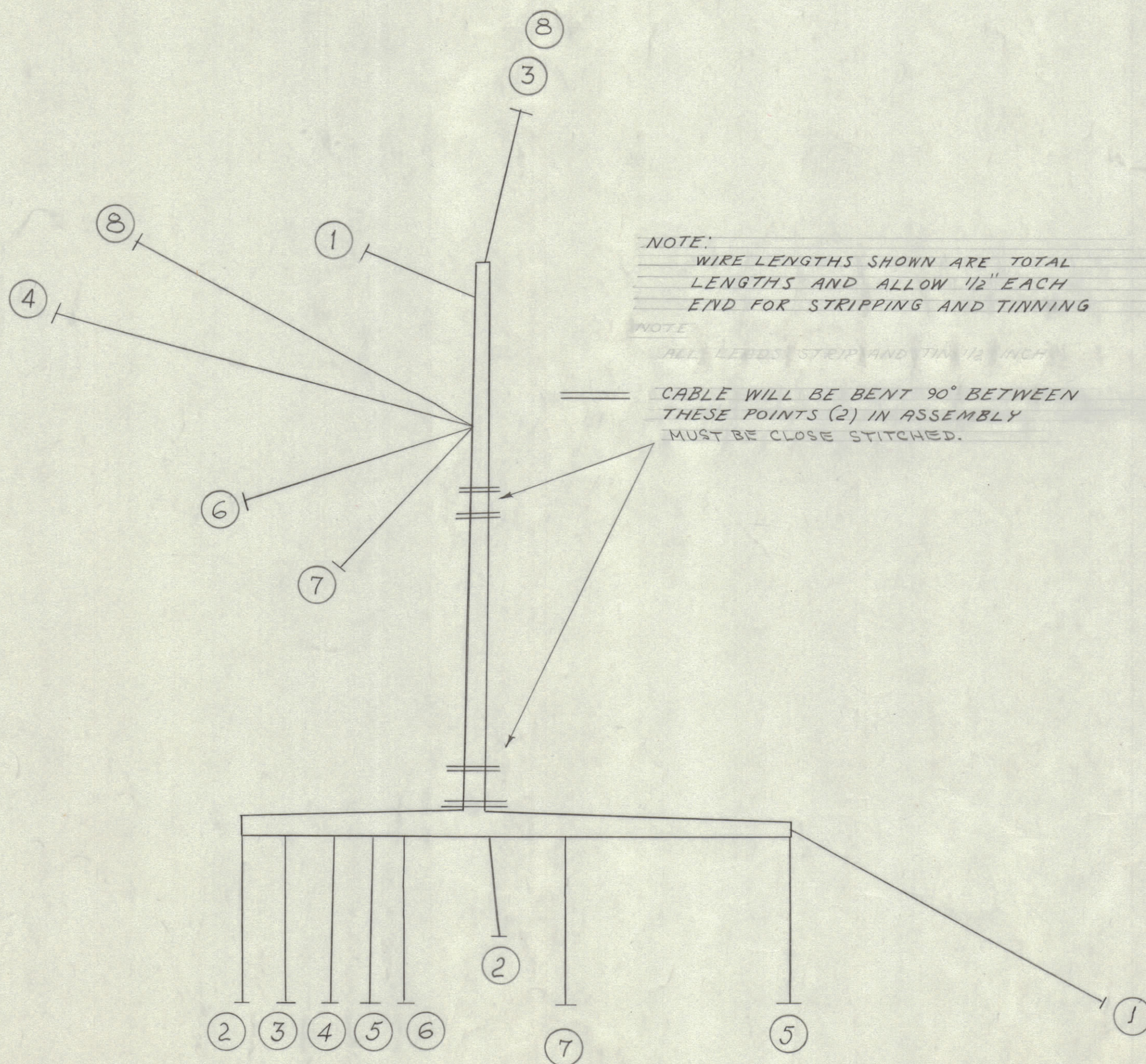
MAXIMUM ALLOWABLE TOLERANCES HAVE BEEN DETERMINED AND DEVIATIONS WILL BE CAUSE FOR REJECTION. REMOVE ALL BURRS AND SHARP EDGES

NOTICE TO PERSONS RECEIVING THIS DRAWING

THE TECHNICAL MATERIEL CORPORATION claims proprietary right in the material disclosed hereon. This drawing is issued in confidence for engineering information only and may not be reproduced or used to manufacture anything shown hereon without permission from THE TECHNICAL MATERIEL CORPORATION to the user. This drawing is loaned for mutual assistance and is subject to recall at any time.

Property of:

THE TECHNICAL MATERIEL CORPORATION
MAMARONECK, NEW YORK



NOTE:
WIRE LENGTHS SHOWN ARE TOTAL LENGTHS AND ALLOW 1/2" EACH END FOR STRIPPING AND TINNING

NOTE
ALL LEADS STRIP AND TIN 1/2 INCH

CABLE WILL BE BENT 90° BETWEEN THESE POINTS (2) IN ASSEMBLY MUST BE CLOSE STITCHED.

CA-213 B

BOTTOM OF CABLE SHOWN

| REQ. | ITEM | PART NO. | DESCRIPTION | SYMBOL |
|---|--------|---------------------|------------------------|--------|
| | 9 | CD-100-2 | LACING CORD | |
| | 8 | SR1R 3/8 (7) 220-55 | CABLE, INSULATED GREEN | |
| | 9 1/2 | 7 | 33 | ORANGE |
| | 9 1/2 | 6 | 66 | BLUE |
| | 8 1/2 | 5 | 00 | BLACK |
| | 12 | 4 | 00 | BLACK |
| | 11 1/2 | 3 | 55 | GREEN |
| | 6 1/4 | 2 | 77 | PURPLE |
| | 13 3/4 | 1 | SR1R 3/8 (7) 220-22 | RED |
| THE TECHNICAL MATERIEL CORP. MAMARONECK, NEW YORK MODEL BFP-2 CABLE CHANNEL #1 TYPE & TEMPER HEAT TREAT. SPEC. FINISH & SPEC. NO. | | | | |

| ISSUE | ITEM | CHANGED FROM | DATE | CN. NO. | DRAFTS | CHECKER | ENG. APP. |
|-------|------|--------------------|----------|---------|--------|---------|-------------|
| B | 1 | WIRE LENGTHS CHANG | 11-22-54 | 2 | P.B. | J.A.D. | [Signature] |
| A | 1 | COMPLETELY REV. | 11-9-54 | 1 | P.B. | A.J.J. | [Signature] |

| REQ. PER UNIT | MODEL | PROJECT NO. | ASSY. NO. | DATE |
|---------------|-------|-------------|-----------|---------|
| 1 | BFP-2 | A-793 | | 11-4-54 |

CA-213 B