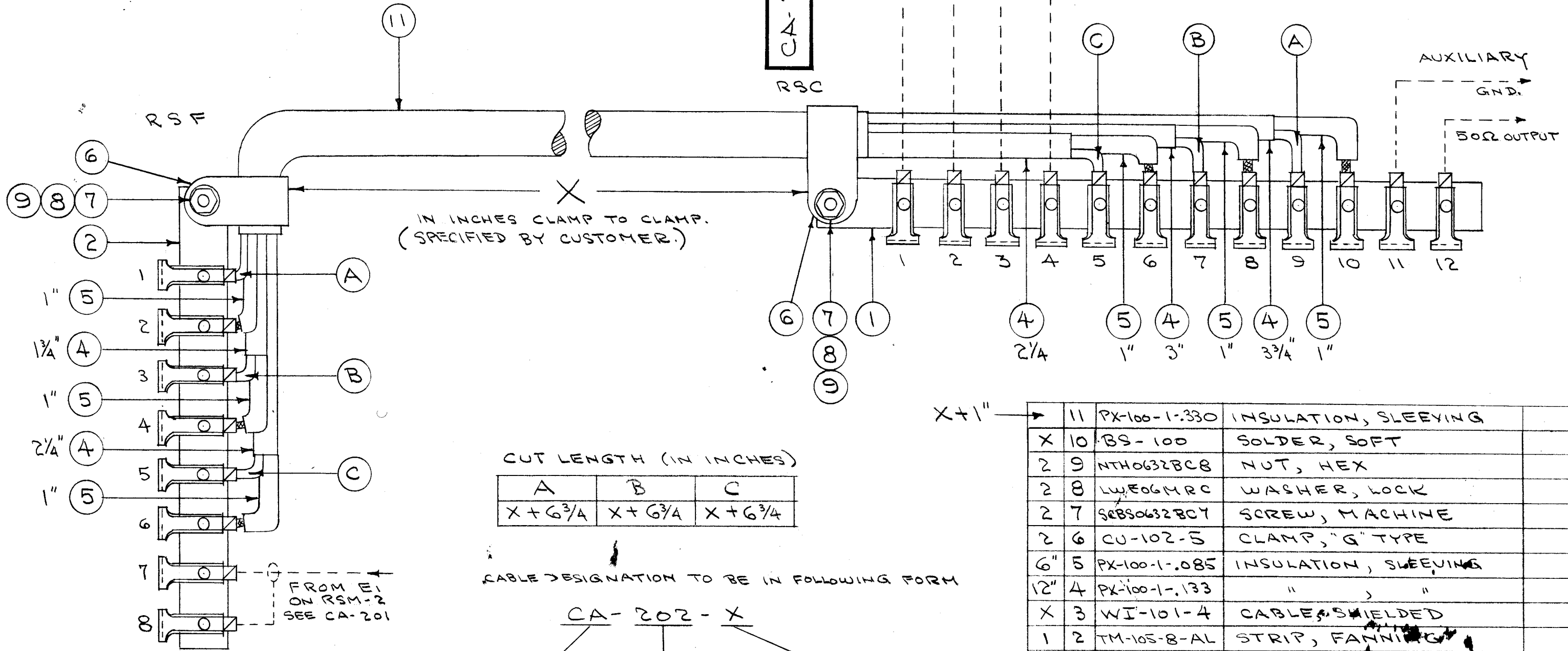


IF IT IS FOUND DESIRABLE TO CHANGE ANY TOLERANCE OR OTHER DETAIL SPECIFIED ON THIS DRAWING NOTIFY THE PURCHASER PROMPTLY.

MAXIMUM ALLOWABLE TOLERANCES HAVE BEEN DETERMINED AND DEVIATIONS WILL BE CAUSE FOR REJECTION. REMOVE ALL BURRS AND SHARP EDGES

NOTE - (BOTH ENDS)
BREAK OUT CONDUCTOR 2" FROM END. CUT 1/2" FROM CONDUCTOR. STRIP 1/2" TIN CONDUCTOR ENDS & 1/2" OF END OF SHIELD.

CA-202-A



CUT LENGTH (IN INCHES)

A	B	C
$X + 6\frac{3}{4}$	$X + 6\frac{3}{4}$	$X + 6\frac{3}{4}$

CABLE DESIGNATION TO BE IN FOLLOWING FORM

CA - 202 - X
 SYMBOL NUMBER LENGTH

11	PX-100-1-330	INSULATION, SLEEVING	
X	10	BS-100	SOLDER, SOFT
2	9	NTH0632BC8	NUT, HEX
2	8	LWEO6MRC	WASHER, LOCK
2	7	SEBS0632BC7	SCREW, MACHINE
2	6	CU-102-5	CLAMP, "G" TYPE
6"	5	PX-100-1-085	INSULATION, SLEEVING
12"	4	PX-100-1-133	" " "
X	3	WI-101-4	CABLE, SHIELDED
1	2	TM-105-8-AL	STRIP, FANNING
1	1	TM-105-12-AL	" " "

REQ. ITEM	PART NO.	DESCRIPTION	SYMBOL
#			
STOCK SIZE			
#		#	
MATERIAL		WEIGHT PER PC.	
#			
TYPE & TEMPER			
#			
HEAT TREAT. SPEC.			
#			
FINISH & SPEC. NO.			

THE TECHNICAL MATERIEL CORP.
 MAMARONECK, NEW YORK

CABLE, INTERCONNECT
 (RSC-RSF) RCR SYSTEM

C.D.D. 12-14-54 P.L.K. 12-16-54

DRAWN: *JAD* ELEC. DES. APP. MECH. DES. APP. *WJ*

CHECKED: *JAD* 12-14-54 FINAL APPROVAL: *APB*

CA-202 A

ISSUE	ITEM	CHANGED FROM	DATE	CN. NO.	DRAFTS	CHECKER	ENG. APP.
A	1	COMPLETE REVISION	12/14/54	1		<i>JAD</i>	<i>APB</i>

REQ. PER UNIT	MODEL	PROJECT NO.	ASSY. NO.	DATE

USED ON