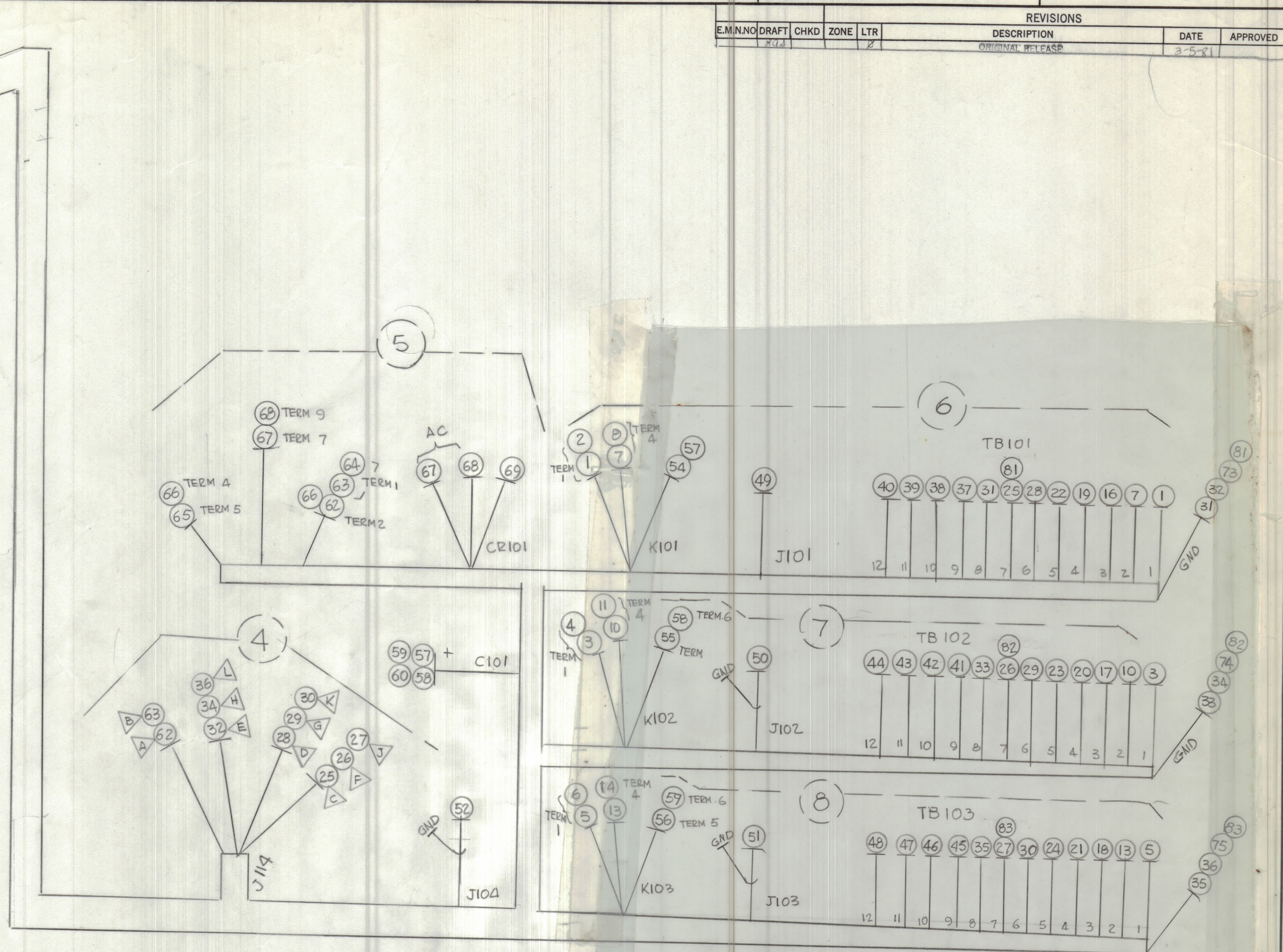
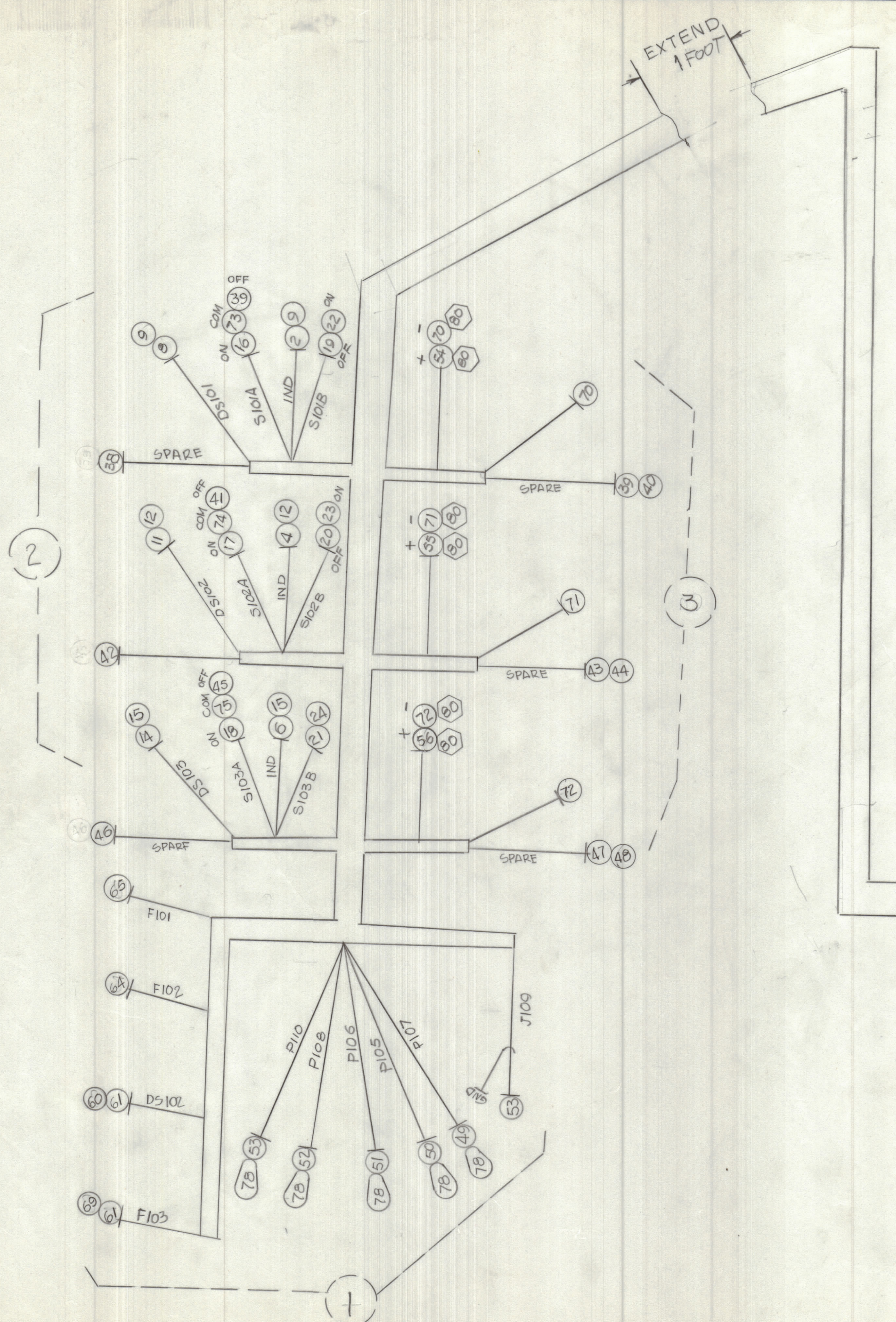


REVISIONS					
E.M.N.O	DRAFT	CHKD	ZONE	LTR	
DESCRIPTION				DATE	APPROVED
ORIGINAL RELEASE				3-5-81	



CONS (S)		
QTY / UNIT	MODEL USED ON	ASS'Y NO.
APPLICATION		
MATERIAL		
FINISH		

UNLESS OTHERWISE SPECIFIED DIMENSIONS ARE IN INCHES AND INCLUDE CHEMICALLY APPLIED OR PLATED FINISHES

TOLERANCES ON
 DECIMALS X ± .05 FRACTIONS ± 1/64
 XX ± .01 ANGLES ± 0° - 30'
 XXX ± .005

QTY. REQ.	ITEM	PART NO.	DESCRIPTION	SYMBOL
LIST OF MATERIAL				
THE TECHNICAL MATERIEL CORP. MAMARONECK, NEW YORK				
CABLE, INTERCONNECT CONSOLE				
SIZE		CODE	IDENT NO.	DWG NO.
D		82679	CA1869	
SCALE 1:1		SHEET		OF

NOTICE TO PERSONS RECEIVING THIS DRAWING
 THE TECHNICAL MATERIEL CORPORATION claims proprietary right in the material disclosed hereon. This drawing is issued in confidence for engineering information only and may not be reproduced or used to manufacture anything shown hereon without permission from THE TECHNICAL MATERIEL CORPORATION to the user. This drawing is loaned for mutual assistance and is subject to recall at any time.

CA

CABLE INTERCONNECT CONSOLE

SHEET 1 OF 3

EQ ITEM	PART NUMBER	BREAKOUT		DESTINATION OR DESCRIPTION		TO
		FROM	TO	FROM		
1	MWC22(7)U1	6	6	TB101-1		K101-1
2	U1	6	2	K101-1		S101-IND
3	U1	7	7	TB102-1		K102-1
4	U1	7	2	K102-1		S102-IND
5	U1	8	8	TB103-1		K103-1
6	U1	8	2	K103-1		S103-IND
7	U2	6	6	TB101-2		K101-4
8	U2	6	2	K101-4		DS101
9	U2	2	2	DS101		S101 IND (w/ jumper to row B)
10	U2	7	7	TB102-2		K102-4
11	U2	7	2	K102-4		DS102
12	U2	2	2	DS102		S102 IND (w/ jumper to row B)
13	U2	8	8	TB103-2		K103-4
14	U2	8	2	K103-4		DS103
15	U2	2	2	DS103		S103 IND (w/ jumper to row B)
16	U3	6	2	TB101-3		S101A-ON
17	U3	7	2	TB102-3		S102 A-ON
18	U3	8	2	TB103-3		S103A-ON
19	U4	6	2	TB101-4		S101B-OFF
20	U4	7	2	TB102-4		S102B-OFF
21	U4	8	2	TB103-4		S103B-OFF
22	U5	6	2	TB101-5		S101B-ON
23	U5	7	2	TB102-5		S102B-ON
24	U5	8	2	TB103-5		S103B-ON
25	U6	6	4	TB101-7		J114-C
26	U7	7	4	TB102-7		J114-F
27	U8	8	4	TB103-7		J114-J
28	U9	6	4	TB101-6		J114-D
29	U91	7	4	TB102-6		J114-G
30	U92	8	4	TB103-6		J114-K
31	U0	6	6	TB101-8		GND
32	U0	6	4	GND		J114-E
33	U90	7	7	TB102-8		GND
34	U90	7	4	GND		J114-H
35	U91	8	8	TB103-8		GND
36	U91	8	4	GND		J114-L
37	U92	6	2	TB101-9		S101A-OFF
38	U93	6	2	TB101-10		SPARE

CA

CABLE INTERCONNECT CONSOLE SHEET 2 OF 3

EQ ITEM	PART NUMBER	BREAKOUT		DESTINATION OR DESCRIPTION	
		FROM	TO	FROM	TO
39	MWC22(7) U94	6	3	TB101-11	SPARE
40	↑ U95	6	3	TB101-12	SPARE
41	↑ U92	7	2	TB102-9	S102A-OFF
42	U93	7	2	TB102-10	SPARE
43	U94	7	3	TB102-11	SPARE
44	U95	7	3	TB102-12	SPARE
45	U92	8	2	TB103-9	S103A-OFF
46	U93	8	2	TB103-10	SPARE
47	U94	8	3	TB103-11	SPARE
48	MWC22(7) U95	8	3	TB103-12	SPARE
49	RG-174/U	6	1	J101	P107
50	↑	7	1	J102	P105
51	↑	8	1	J103	P106
52	↑	4	1	J104	P108
53	RG-174/U	1	1	J109	P110
54	MWC22(7) U3	6	3	K101-5	DS106(+)
55	↑ U3	7	3	K102-5	DS105(+)
56	U3	8	3	K103-5	DS104(+)
57	U92	4	6	C101(+)	K101-6
58	U92	4	7	C101(+)	K102-6
59	U92	4	8	C101(+)	K103-6
60	U92	4	1	C101(+)	DS107
61	MWC22(7) U92	1	1	DS107	F103 (FRONT)
62	MWC20(7) U3	4	5	J114-A	T101-2
63	↑ U93	4	5	J114-B	T101-1
64	MWC22(7) U93	5	1	T101-1	F102 (FRONT)
65	U4	5	1	T101-5	F101 (FRONT)
66	MWC20(7) U3	5	5	T101-2	T101-4 (220VAC MNT)
67	MWC22(7) U1	5	5	T101-7	CR101 AC
68	↑ U91	5	5	T101-9	CR101 AC
69	U2	5	1	CR101(+)	F103 (END)
70	U90	3	3	DS106(-)	S106 (COM)
71	U90	3	3	DS105(-)	S105 (COM)
72	U90	3	3	DS104(-)	S104 (COM)
73	U0	6	2	GND	S101A (COM)
74	U90	7	2	GND	S102A (COM)
75	MWC22(7) U91	8	2	GND	S103A (COM)
76	PX100-			INSULATION SLEEVING	

