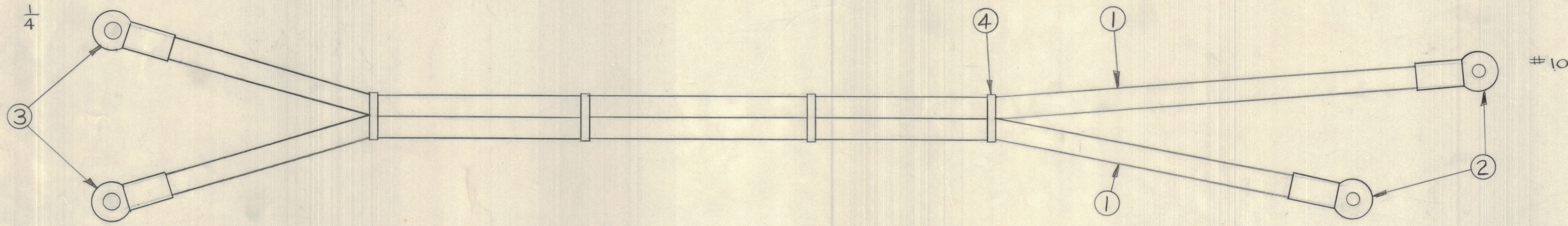


REVISIONS							
E.M.N.O.	DRAFT	CHKD	ZONE	LTR	DESCRIPTION	DATE	APPROVED
	EP			Ø	ORIGINAL RELEASE FOR PRODUCTION	8-22-72	
2/315	CL	CL		A	ITEM 1 WAS HWC 4(133)B9	11/75	CL



CUT CABLE TO LENGTHS OF 17-1/2" & 21-1/2"

QTY. REQ.	ITEM	PART NO.	DESCRIPTION	SYMBOL
6				
5	BS100		SOLDER, TIN ALLOY	
4	4	CU 142-2	STRAP, CBL	
2	3	TE197-4-25	TERM LUG, INS	
2	2	TE197-4-10	TERM LUG, INS	
1		HWC4(133)U9	WIRE, ELEC, BUSS	

LIST OF MATERIAL

UNLESS OTHERWISE SPECIFIED DIMENSIONS ARE IN INCHES AND INCLUDE CHEMICALLY APPLIED OR PLATED FINISHES	FINAL APPROVAL	DATE
	<i>JPM</i>	22 AUG 72
TOLERANCES ON	MECH. DES.	DATE
DECIMALS	<i>JPM</i>	22 AUG 72
.X ± .05	CHECKED	DATE
.XX ± .01	<i>JPM</i>	22 AUG 72
.XXX ± .005	DRAWN	DATE
	<i>JPM</i>	22 AUG 72

THE TECHNICAL MATERIEL CORP.
MAMARONECK, NEW YORK

CABLE, FILAMENT

1	HFL(-)10K/REV A	AP153
QTY / UNIT	MODEL USED ON	ASSY NO.
	APPLICATION	
	CODE	
<small>NOTICE TO PERSONS RECEIVING THIS DRAWING</small> <small>THE TECHNICAL MATERIEL CORPORATION claims proprietary right in the material disclosed hereon. This drawing is issued in confidence for engineering information only and may not be reproduced or used to manufacture anything shown hereon without permission from THE TECHNICAL MATERIEL CORPORATION to the user. This drawing is loaned for mutual assistance and is subject to recall at any time.</small>		
MATERIAL		
FINISH		

SIZE CODE IDENT NO. DWG NO. ISSUE

D 82679 CA1722 A

SCALE SHEET OF