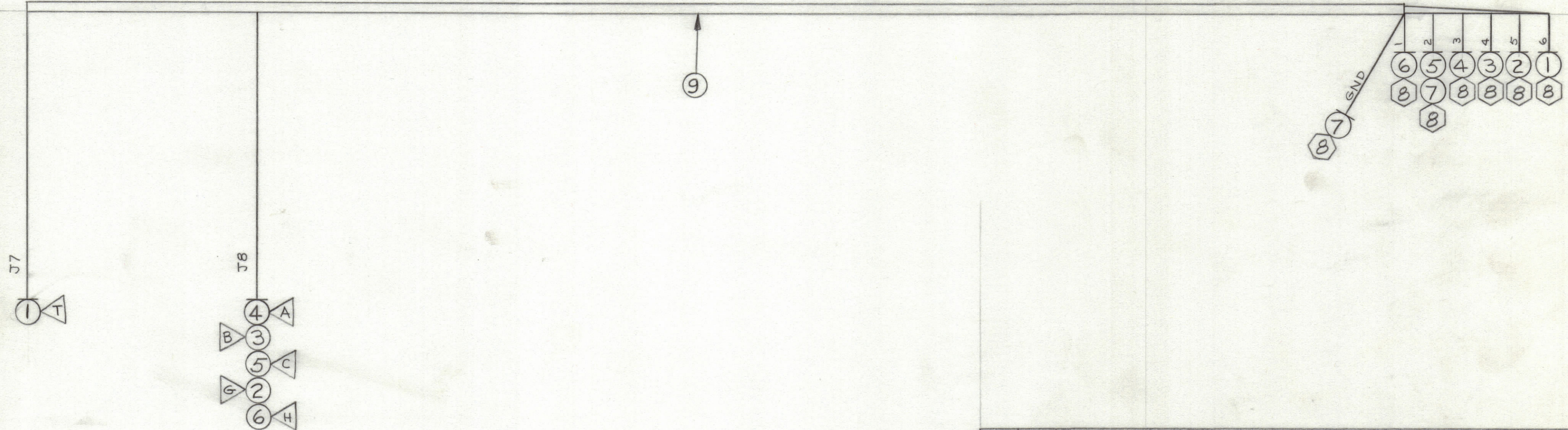


REVISIONS							
ZONE	LTR	DESCRIPTION	DATE	E.M.N.NO	DRAFT	CHKD	APPD
	Ø	ORIGINAL RELEASE FOR PRODUCTION	3/30/72			(W)	



12			
11	BS100	SOLDER, TIN ALLOY	
10	CD101-1MW	CORD, NYLON, LACING	
9	PX100-1-208	INS SLVS, BLK	
8	TE120-2	TERM LUG, SPADE	
7	LWC24(7)U0	TBI Term 2	TBI GND
6	LWC24(7)U96	TBI Term 1	J8 Pin H
5	LWC24(7)U92	TBI Term 2	J8 Pin C
4	LWC24(7)U2	TBI Term 3	J8 Pin A
3	LWC24(7)U91	TBI Term 4	J8 Pin B
2	LWC24(7)U97	TBI Term 5	J8 Pin G
1	LWC24(7)U92	TBI Term 6	J7 Pin T

QTY. REQ.	ITEM	PART NO.	DESCRIPTION	SYMBOL
LIST OF MATERIAL				
FINAL APPROVAL		DATE	THE TECHNICAL MATERIEL CORP. MAMARONECK, NEW YORK CABLE, RELAY	
MECH. DES.		DATE		
ELECT. DES.		DATE		
CHECKED		DATE		
DRAWN		DATE		
SIZE	CODE	IDENT. NO.	DWG. NO.	ISSUE
C		82679	CA1703	Ø
SCALE			SHEET	OF

1	AX740	ASS'Y NO.
QTY / UNIT	MODEL USED ON	
APPLICATION		
CODE		
<small>NOTICE TO PERSONS RECEIVING THIS DRAWING</small> THE TECHNICAL MATERIEL CORPORATION claims proprietary right in the material disclosed hereon. This drawing is issued in confidence for engineering information only and may not be reproduced or used to manufacture anything shown hereon without permission from THE TECHNICAL MATERIEL CORPORATION to the user. This drawing is loaned for mutual assistance and is subject to recall at any time.		

UNLESS OTHERWISE SPECIFIED DIMENSIONS ARE IN INCHES AND INCLUDE CHEMICALLY APPLIED OR PLATED FINISHES

TOLERANCES ON
 DECIMALS .X ± .05
 .XX ± .01
 .XXX ± .005
 FRACTIONS ± 1/64
 ANGLES ± 0° -30'

MATERIAL

FINISH