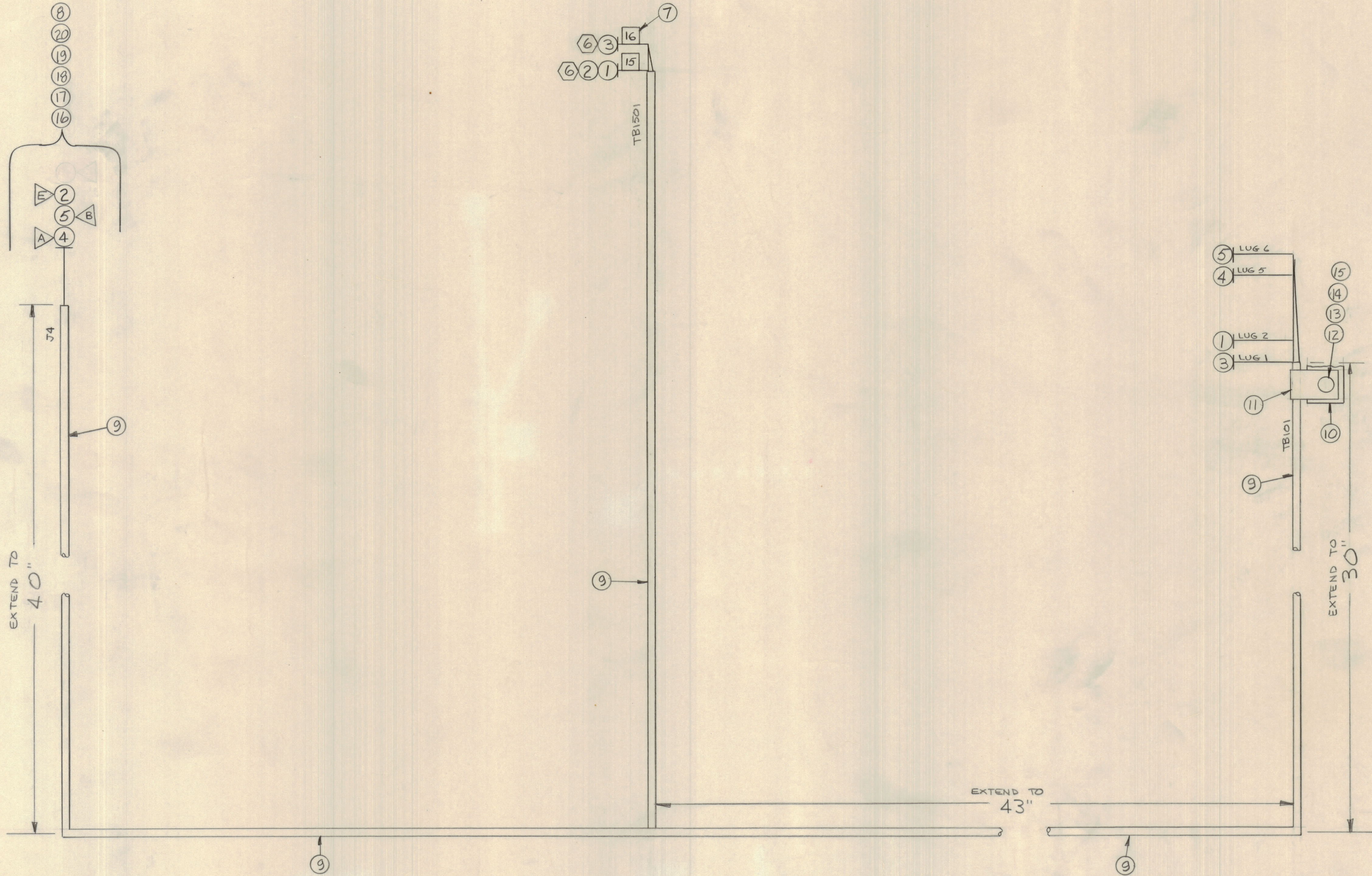


REVISIONS							
E.M.N.O	DRAFT	CHKD	ZONE	LTR	DESCRIPTION	DATE	APPROVED
	0			0	ORIGINAL RELEASE FOR PRODUCTION	11/77	



QTY. REQ.	ITEM	PART NO.	DESCRIPTION	SYMBOL
24				
23	CD101-1MW		CORD NYLON, LACING	
22	TA100-1		TAPE, ELEC	
21	BS100		SOLDER, TIN ALLOY	
1	20	MS3420-4A	BUSH, RUB	
1	19	MS3420-6A	BUSH, RUB	
1	18	MS3420-8A	BUSH, RUB	
1	17	MS3057-B	CLP CBL ELC CONN	
1	16	MS3106B16-1P	CONN, PL, HL 7/C	
1	15	NTH0632 BNS	NUT, PLN, HH	
1	14	LWE06HRN	WASH, LK, EXT	
1	13	FW06HBN	WASH, FLAT	
1	12	ECBP0632BN6	SCR, MACH	
1	11	CU102-2	CLP LOOP	
1	10	TM105-6AL	TERM BD FNS	
9	PX100-1-166		INS, SLUG, BLK	
8	PX100-1-106		INS, SLUG, BLK	
2	7	LA101	BND HXR, CBL	
2	6	TE120-2	TERM LUG, SPADE	
5	MWC22(7)U6	TB101	Term 6	J4 Pin B
4	MWC22(7)U5	TB101	Term 5	J4 Pin A
3	MWC22(7)U0	TB1501	Term 16	TB101 Term 1
2	MWC22(7)U2	TB1501	Term 15	J4 Pin E
1	MWC22(7)U2	TB1501	Term 15	TB101 Term 2

LIST OF MATERIAL			
FINAL APPROVAL	DATE	THE TECHNICAL MATERIEL CORP.	
MECH. DES.	DATE	MAMARONECK, NEW YORK	
ELECT. DES.	DATE	WIRING HARNESS BRANCHED	
CHECKED	DATE		
DRAWN	DATE		
MATERIAL		SIZE	CODE IDENT NO. DWG NO.
FINISH		D	82679 CA1653
		SCALE	SHEET OF

QTY / UNIT	MODEL USED ON	ASSY NO.
3	SYM 1204	
APPLICATION		
CODE		
NOTICE TO PERSONS RECEIVING THIS DRAWING		
THE TECHNICAL MATERIEL CORPORATION claims proprietary right in the material disclosed hereon. This drawing is issued in confidence for engineering information only and may not be reproduced or used to manufacture anything shown hereon without permission from THE TECHNICAL MATERIEL CORPORATION to the user. This drawing is loaned for mutual assistance and is subject to recall at any time.		

TOLERANCES ON	
DECIMALS	FRACTIONS
X ± .05	= 1/64
.XX ± .01	ANGLES
.XXX ± .005	± 0° - 30'