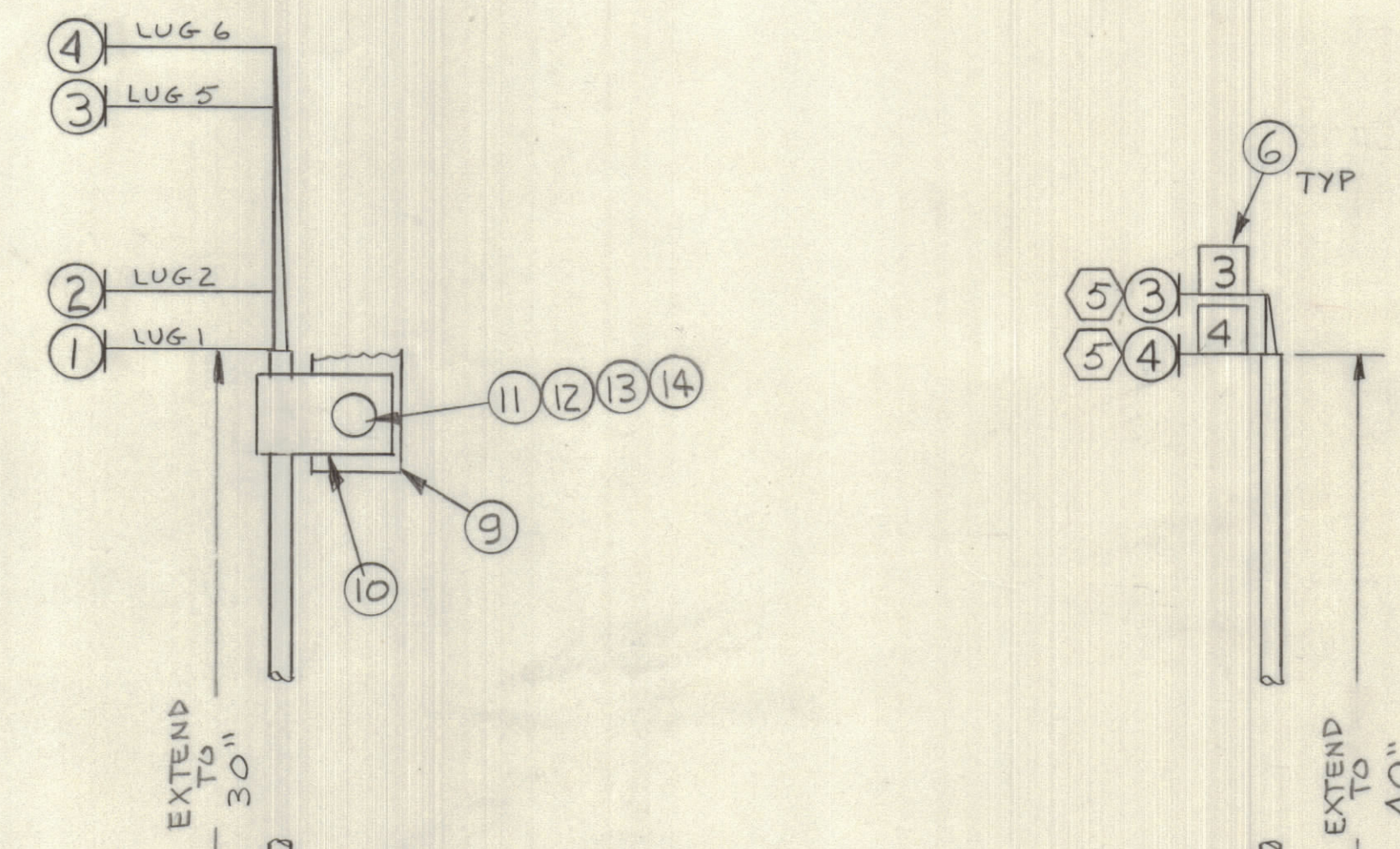
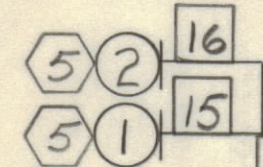


REVISIONS							
E.M.N.O	DRAFT	CHKD	ZONE	LTR	DESCRIPTION	DATE	APPROVED
	W			Ø	ORIGINAL RELEASE FOR PRODUCTION	9/3/71	



QTY. REQ.	ITEM	PART NO.	DESCRIPTION	SYMBOL
	20			
	19			
	18			
	17	TA100-2	TAPE, ELEC	
	16	CD101-1HW	CORD, NYLON, LACING	
	15	BS100	SOLDER, TIN ALLOY	
	14	NTH0632BNB	NUT, PLN, HH	
	13	LWEC08MRN	WASH, LK, EXT	
	12	FW08HBN	WASH, FLAT	
	11	SCBPO632BNG	SCR, MACH	
	10	CU102-2	CLP, LOOP	
	9	TH105-6AL	TERM BD, FN6	
	8	PX100-1-133	INS, SLUG, BLK	
	7	PX100-1-166	INS, SLUG, BLK	
	6	LA101	BAND, MKR, CBL	
	5	TE120-2	TERM LUG, SPADE	
	4	MWC22(7)U 4	TB101 TERM 6	TB1 TERM 4
	3	MWC22(7)U 3	TB101 TERM 5	TB1 TERM 3
	2	MWC22(7)U 96	TB101 TERM 2	TB1501 TERM 16
	1	MWC22(7)U 95	TB101 TERM 1	TB1501 TERM 15

LIST OF MATERIAL			
FINAL APPROVAL	DATE	THE TECHNICAL MATERIEL CORP.	
MECH. DES.	DATE	MAMARONECK, NEW YORK	
ELECT. DES.	DATE	WIRING HARNESS, MAIN	
CHECKED	DATE		
DRAWN	DATE	SIZE	CODE IDENT NO. DWG NO.
MATERIAL		D	82679 CA1648
FINISH		SCALE	SHEET OF

QTY / UNIT	MODEL USED ON	ASS'Y NO.
2	SYM1202	
APPLICATION		
CODE		

NOTICE TO PERSONS RECEIVING THIS DRAWING
 THE TECHNICAL MATERIEL CORPORATION claims proprietary right in the material disclosed hereon. This drawing is issued in confidence for engineering information only and may not be reproduced or used to manufacture anything shown hereon without permission from THE TECHNICAL MATERIEL CORPORATION to the user. This drawing is loaned for mutual assistance and is subject to recall at any time.

UNLESS OTHERWISE SPECIFIED DIMENSIONS ARE IN INCHES AND INCLUDE CHEMICALLY APPLIED OR PLATED FINISHES	
TOLERANCES ON	
DECIMALS	FRACTIONS
.X ± .05	± 1/64
.XX ± .01	ANGLES ± 0° -30'
.XXX ± .005	