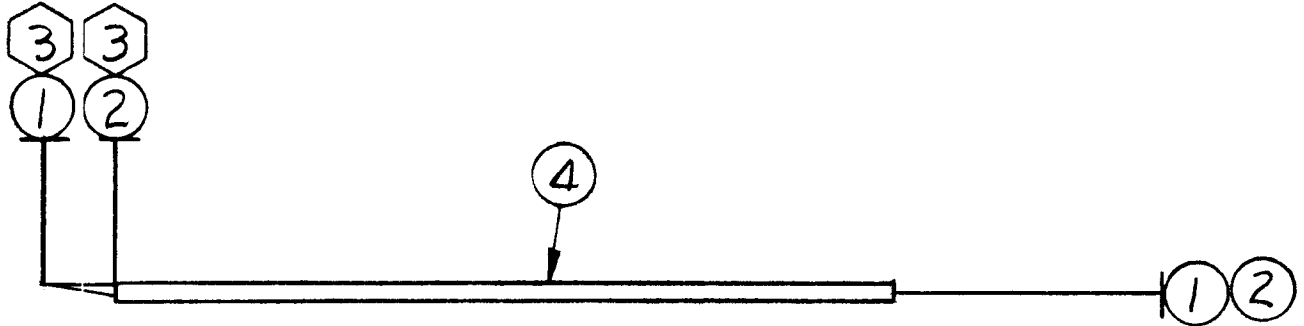


APPLICATION			REVISIONS						
QTY	MODEL USED ON	ASS'Y NO.	LTR	DESCRIPTION	DATE	E.M.N.NO	DRAFT	CHKD	APPD
1	HFLA-1K	AP151	<i>Ø</i>	ORIGINAL RELEASE	5/15/71		<i>Ø</i>		<i>Ø</i>



REQ'D	ITEM	PART NUMBER	DESCRIPTION	SYM.
	8			
	7			
	6	BS100	SOLDER, TIN ALLOY	
	5	CD101-1MW	CORD, NYLON, LACING	
	4	PX100-1-106	INS SLUG, BLK	
2	3	TE120-2	TERM LUG, SPADE	
	2	LWC24(7)U8	TB301-8	XDS302
	1	LWC24(7)U7	TB301-7	XDS302

BUDETTI LIST OF MATERIAL			
THE TECHNICAL MATERIEL CORP.	MAMARONECK, NEW YORK		
CABLE, HV INDICATOR			
FINAL APPROVAL <i>[Signature]</i>	DATE <i>5/15/71</i>		
MECH. DES. <i>[Signature]</i>	DATE <i>5/15/71</i>		
ELECT. DES.	DATE		
CHECKED	DATE		
DRAWN <i>[Signature]</i>	DATE		

UNLESS OTHERWISE SPECIFIED DIMENSIONS ARE IN INCHES AND INCLUDE CHEMICALLY APPLIED OR PLATED FINISHES

DECIMALS	FRACTIONS
.X ± .05	1/64
.XX ± .01	TOLS. ANGLES
.XXX ± .005	0°-30'

MATERIAL
FINISH

NOTICE TO PERSONS RECEIVING THIS DRAWING THE TECHNICAL MATERIEL CORPORATION claims proprietary right in the material disclosed hereon. This drawing is issued in confidence for engineering information only and may not be reproduced or used to manufacture anything shown hereon without permission from THE TECHNICAL MATERIEL CORPORATION to the user. This drawing is loaned for mutual assistance and is subject to recall at any time.				SIZE A	CODE IDENT. NO. 82679	DWG NO. CA1623	ISSUE <i>Ø</i>
SCALE			SHEET OF				