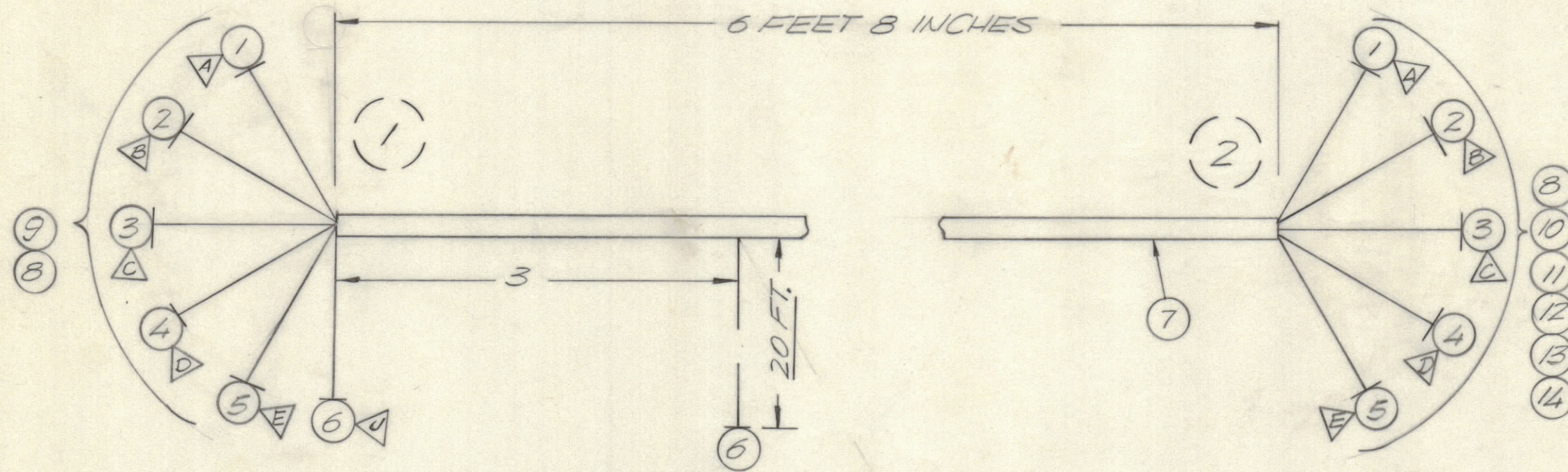


REVISIONS							
E.M.N.NO	DRAFT	CHKD	ZONE	LTR	DESCRIPTION	DATE	APPROVED
	CS				ORIGINAL RELEASE	5/7/73	



SYMBOL DENOTES

( ) BREAKOUT STATIONS

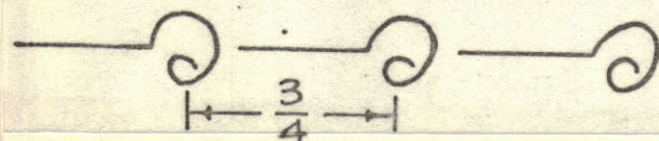
○ ITEM NUMBERS

△ CONNECTOR PINS

UNLESS OTHERWISE SPECIFIED WIRES SHOULD BE PLACED IN CABLE IN NUMERICAL SEQUENCE AS THEY APPEAR IN ITEM COLUMN BY CATEGORY.

1. ALL R.F. CABLES
2. ALL SHIELDED CABLES
3. ALL OTHERS

SPACE LACING APPROXIMATELY 3/4" APART.



QTY.	ITEM	PART NO.	FROM	DESCRIPTION	TO	SYMBOL
1	14	MS 3420-6A		BUSHING RUBBER		
1	13	MS 3420-10A		BUSHING RUBBER		
1	12	MS 3420-12A		BUSHING RUBBER		
1	11	MS 3057-12		CLAMP CABLE		
1	10	MS 3106 B20-71A		CONNECTOR PLUG MIL.		
1	9	PL 189-9P		CONNECTOR PLUG		
X	8	PX 100-1-106		INSULATION SLEEVING ELEC.		
AS NOTE	7	PX 100-1-263		INSULATION SLEEVING ELEC.		
AS NOTE	6	MWC 20(7)4		BREAKOUT#1 PIN U	AS SHOWN	
X	5	MWC 20(7)4 0		BREAKOUT#1 PIN E	BREAKOUT#2 PIN E	
X	4				D	D
X	3				93	C
X	2				2	B
X	1	MWC 20(7)U 1		BREAKOUT#1 PIN A	BREAKOUT#2 PIN A	

QTY. REQ.	ITEM	PART NO.	FROM	DESCRIPTION	TO	SYMBOL
LIST OF MATERIAL						
FINAL APPROVAL		DATE		<b>THE TECHNICAL MATERIEL CORP.</b> MAMARONECK, NEW YORK  <b>CABLE ASSY.</b>		
MECH. DES.		DATE				
ELECT. DES.		DATE				
CHECKED		DATE				
DRAWN		DATE		SIZE CODE IDENT NO. DWG NO. ISSUE <b>C 82679 CA 1582</b>		
MATERIAL		FINISH		SCALE SHEET OF		

1	HFR-5 (NACOM)	AX 5117
QTY / UNIT	MODEL USED ON	ASS'Y NO.
APPLICATION		
CODE		
NOTICE TO PERSONS RECEIVING THIS DRAWING <b>THE TECHNICAL MATERIEL CORPORATION</b> claims proprietary right in the material disclosed herein. This drawing is issued in confidence for engineering information only and may not be reproduced or used to manufacture anything shown hereon without permission from <b>THE TECHNICAL MATERIEL CORPORATION</b> to the user. This drawing is loaned for mutual assistance and is subject to recall at any time.		