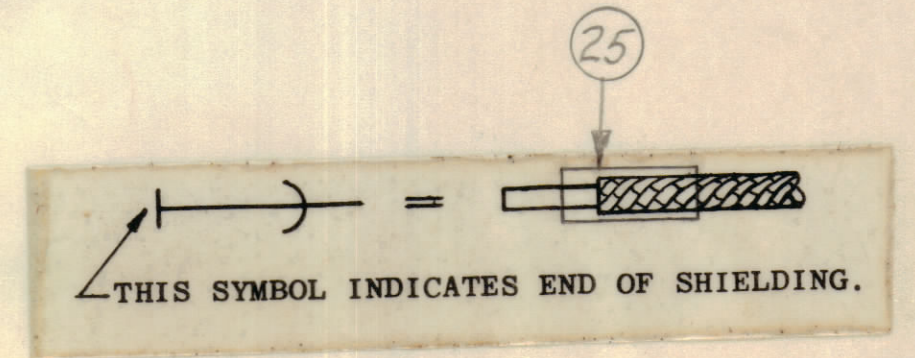
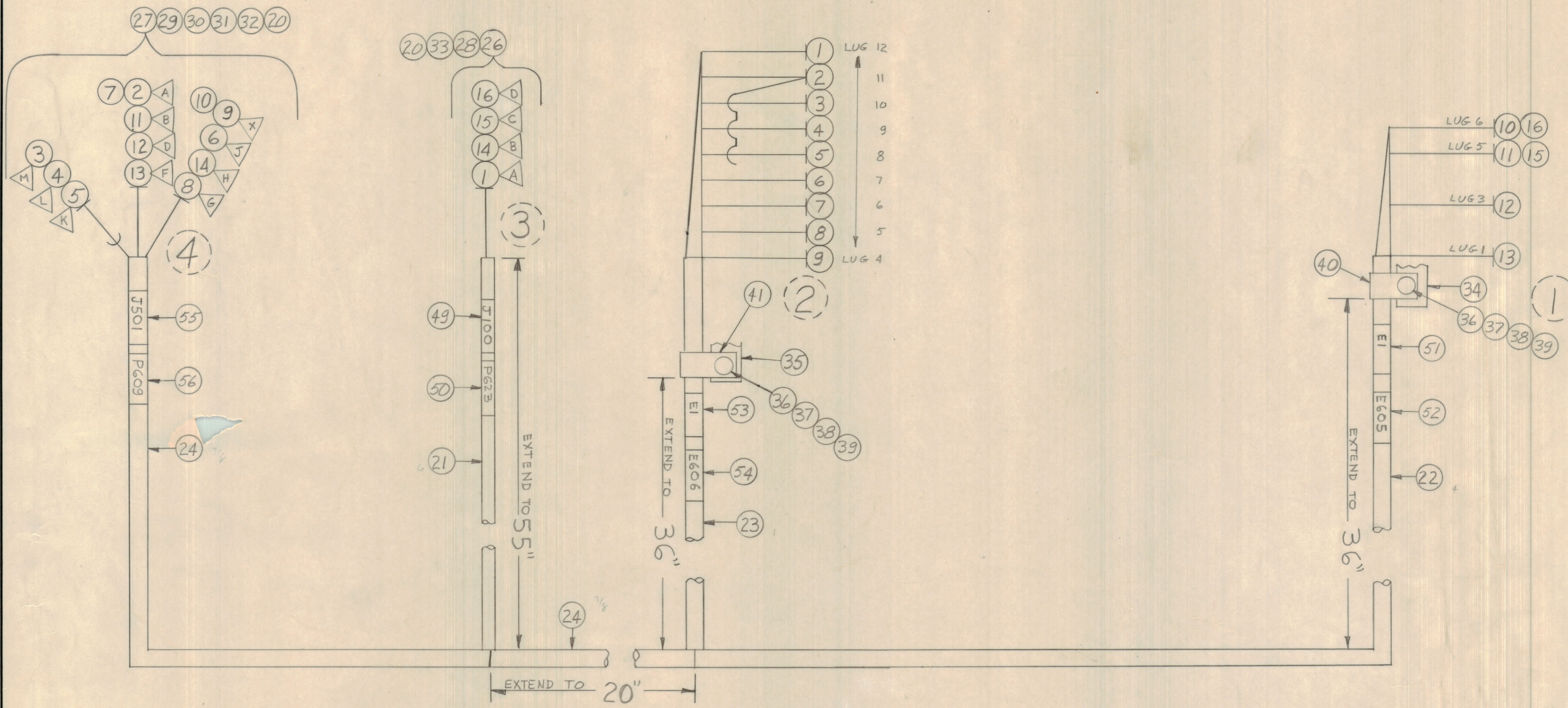


REVISIONS							
E.M.N.NO	DRAFT	CHKD	ZONE	LTR	DESCRIPTION	DATE	APPROVED
	00			X	ORIGINAL RELEASE FOR PRODUCTION	9/29/70	



1	GPT-1KE	RAK9F5
QTY / UNIT	MODEL USED ON	ASS'Y NO.
APPLICATION		
CODE		
<small>NOTICE TO PERSONS RECEIVING THIS DRAWING</small> <small>THE TECHNICAL MATERIEL CORPORATION claims proprietary right in the material disclosed hereon. This drawing is issued in confidence for engineering information only and may not be reproduced or used to manufacture anything shown hereon without permission from THE TECHNICAL MATERIEL CORPORATION to the user. This drawing is loaned for mutual assistance and is subject to recall at any time.</small>		

UNLESS OTHERWISE SPECIFIED DIMENSIONS ARE IN INCHES AND INCLUDE CHEMICALLY APPLIED OR PLATED FINISHES	
TOLERANCES ON	
DECIMALS	FRACTIONS
.X ± .05	± 1/64
.XX ± .01	ANGLES
.XXX ± .005	± 0° -30'

QTY. REQ.	ITEM	PART NO.	DESCRIPTION	SYMBOL
LIST OF MATERIAL				
FINAL APPROVAL		DATE	THE TECHNICAL MATERIEL CORP.	
MECH. DES.		DATE	MAMARONECK, NEW YORK	
ELECT. DES.		DATE	WIRING HARNESS BRANCHED	
CHECKED		DATE		
DRAWN		DATE		
MATERIAL		SIZE	CODE IDENT NO.	DWG NO.
FINISH			D 82679	CA1581
SCALE		SHEET		OF

CA1581 Sh1 of 3

REQ	ITEM	PART NUMBER	BREAKOUT		DESTINATION OR DESCRIPTION	
			FROM	TO	FROM	TO
	1	MWC22(7)U1	2	3	E606 Lug 12	P623 Pin A
	2	U0	2	4	↙	P609 ↘
	3	SJ2	2	4	↙	↘
	4	SJ3	2	4	↙	↘
	5	SJ4	2	4	↙	↘
	6	U5	2	4	↙	↘
	7	U0	2	4	↙	↘
	8	U6	2	4	↙	↘
	9	U0	2	4	↙	↘
	10	U0	1	4	E606 Lug 4	↘
	11	U7	1	4	E605 Lug 6	↘
	12	U8	1	4	↙	↘
	13	U9	1	4	E605 Lug 1	↘
	14	U2	3	4	P623 Pin B	P609 Pin H
	15	U7	3	1	P623 Pin C	E605 Lug 5
	16	MWC22(7)U0	3	1	P623 Pin D	E605 Lug 6
	17					
	18					
	19					
	20	PX100-1-106			INS, SLUG, BLK	
	21	-166				
	22	-208				
	23	-294				
	24	PX100-1-375			INS, SLUG, BLK	

CA1581 Sh 2 of 3

REQ	ITEM	PART NUMBER	BREAKOUT		DESTINATION OR DESCRIPTION	
			FROM	TO	FROM	TO
	25	PX830-12-1			INS, SLUG, SHRINK	
1	26	M53106B145-25			CONN, PL, FML 4/C	P623
1	27	M53106B28-11P			CONN, PL, MC 22/C	P609
1	28	M53057-6			CLP, CBL, EL CONN	
1	29	M53057-16			CLP, CBL, EL CONN	
1	30	M53420-16A			BUSH RUB	
1	31	M53420-12A				
1	32	M53420-8A				
1	33	M53420-6A			BUSH RUB	
1	34	TM105-8AR			TERM STRIP, FNG	E605
1	35	TM105-12AR			TERM STRIP, FNG	E606
2	36	SCBP0632BNG			SCR, MACH	
2	37	FW06HBN			WASH, FLAT	
2	38	LWE06MRN			WASH, LOCK, EXT	
2	39	NTH0632BNA			NUT, PLN, KH	
1	40	CU102-2			CLP, LOOP-	
1	41	CU102-4			CLP, LOOP	
	42					
	43					
	44					
	45					
	46					
	47					
	48					

CA1581 563073

REQ	ITEM	PART NUMBER	BREAKOUT		DESTINATION OR DESCRIPTION	
			FROM	TO	FROM	TO
1	49	LA107-11-J100			SLV, MKR, CBL	
1	50	▲ -11-P623				
1	51	-13-E1				
1	52	-13-E605				
1	53	-14-E1				
1	54	-14-E606				
1	55	▼ -15-J501				
1	56	LA107-15-P609			SLV, MKR, CBL	
	57					
	58					
	59					
	60	BS100			SOLDER, TIN ALLOY	
	61	CD101-1HW			CORD, NYLON, LACING	
	62	TA100-1			TAPE, ETC	
	63					
	64					
	65					