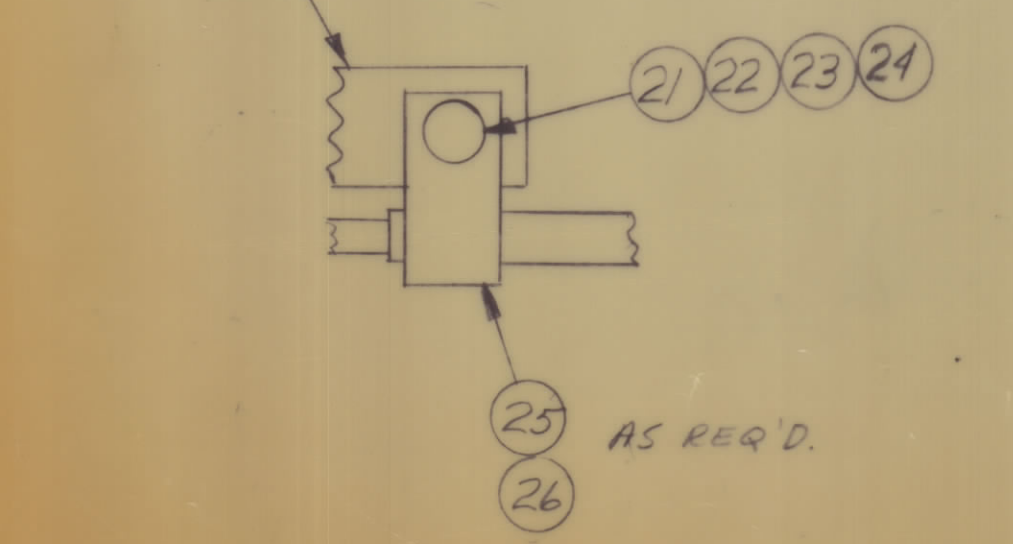
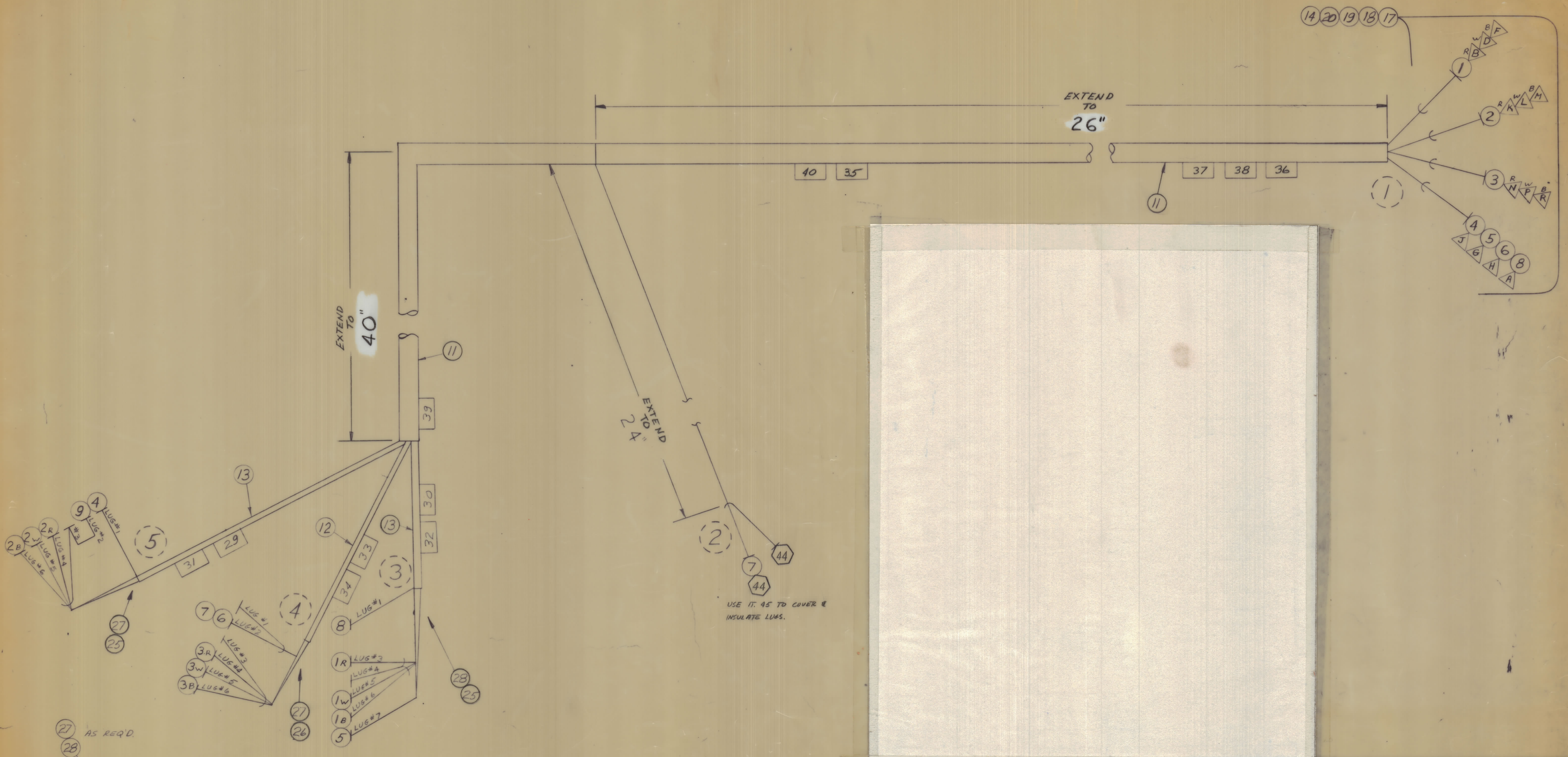


REVISIONS							
E.M.N.O	DRAFT	CHKD	ZONE	LTR	DESCRIPTION	DATE	APPROVED
	0				ORIGINAL RELEASE FOR PRODUCTION	9/21/70	



USE IT. 45 TO COVER & INSULATE LUGS.

APPLICATION			TOLERANCES ON		DESCRIPTION	
1	GPT-1KG	RAK 9F4	DECIMALS	FRACTIONS	REQ. BUDETT	DATE 6/15/70
QTY / UNIT	MODEL USED ON	ASS'Y NO.	.X ± .05	± 1/64	MECH. DES.	DATE
APPLICATION			.XX ± .01	ANGLES	ELECT. DES.	DATE 8 Dec 69
CODE			.XXX ± .005	± 0° -30'	CHECKED	DATE
MATERIAL			LIST OF MATERIAL			
FINISH			THE TECHNICAL MATERIEL CORP.			
			MAMARONECK, NEW YORK			
			WIRING HARNESS BRCHD			
			SIZE	CODE IDENT NO.	DWG NO.	ISSUE
			D	82679	CA1532	0
			SCALE	SHEET		OF

NOTICE TO PERSONS RECEIVING THIS DRAWING
 THE TECHNICAL MATERIEL CORPORATION claims proprietary right in the material disclosed hereon.
 This drawing is issued in confidence for engineering information only and may not be reproduced or used
 to manufacture anything shown hereon without permission from THE TECHNICAL MATERIEL CORPORATION
 to the user. This drawing is loaned for mutual assistance and is subject to recall at any time.

B CA1532

REQ.	ITEM NO.	PART NO.	BREAK OUT		DESTINATION OR DESCRIPTION	
			FROM	TO	FROM	TO
	1	WI142-3 R	1	3	P617 Pin B	E607 Lug 3
		" W	1	3	↑	↑
		" B	1	3		↓
		" S	1	3		↓
	2	WI142-3 R	1	5	-	E607
		" W	1	5	K	E605
		" B	1	5	L	↑
		" S	1	5	M	↓
	3	WI142-3 R	1	5	-	E605
		" W	1	4	N	E606
		" B	1	4	P	↑
		" S	1	4	R	↓
	4	MWC22(7)U1	1	5	-	E606
	5	MWC22(7)U2	1	3	J	E605
	6	MWC22(7)SJS	1	4	G	E607
	7	MWC22(7)SJS	2	4	P617 Pin H	E606
	8	MWC20(7)U0	1	3	AX5040	E606
	9	MWC20(7)U0	5	5	P617 Pin A	E607
	10				E605 Lug 2	E605 Lug 3
	11	PX100-1-500			INS, SLVG, BLK	
	12	PX100-1-330			↑	↑
	13	PX100-1-263			↓	↓
	14	PX100-1-106			BLK	
	15	PX830-8-1			↑	SHRINK
	16	PX830-12-1			INS, SLVG, SHRINK	
	17	MS3106B28-11P			CONN, PL, ML 22/C	P617
	18	MS3057-16			CLP, CBL, EL, CONN	
	19	MS3420-16A			BUSH, RUBBER	

REQ.	ITEM NO.	PART NO.	BREAKOUT		DESTINATION OR DESCRIPTION
			FROM	TO	
1	20	MS3420-12A			BUSH, RUBBER
3	21	SCBP0632BN6			SCREW, MACH
3	22	FW06HBN			WASH, FLAT
3	23	LWEO6MRN			WASH, LK, EXT
3	24	NTH0632BN8			NUT, PLN, HEX
2	25	CU102-3			CLP, LOOP, NYLON
1	26	CU102-4			CLP, LOOP, NYLON
2	27	TM105-6AR			TERM. BD., FNG- E605 E606
1	28	TM105-8AR			TERM. BD., FNG-
1	29	LA107-14-E605			SLV, MKR, CBL
1	30	-14-E607			
1	31	-14-TB103			
1	32	=14-TB105			
1	33	-15-E606			
1	34	-15-TB104			
1	35	-17-CA1532			
1	36	-17-J501			
1	37	-17-P617			
1	38	-17-APP-4			
1	39	-17-SME			
1	40	LA107-17-W601			SLV, MKR, CBL
	41	B5100			SOLDER, TIN, ALY
	42	CD101-1MW			CORD, NYLON, LACING
	43	TA102-1			TAPE, ELEC-
2	44	TE120-2			TERM, LUG, SPADE
	45	PX030-8-1			INS, SLVG, SHRINK