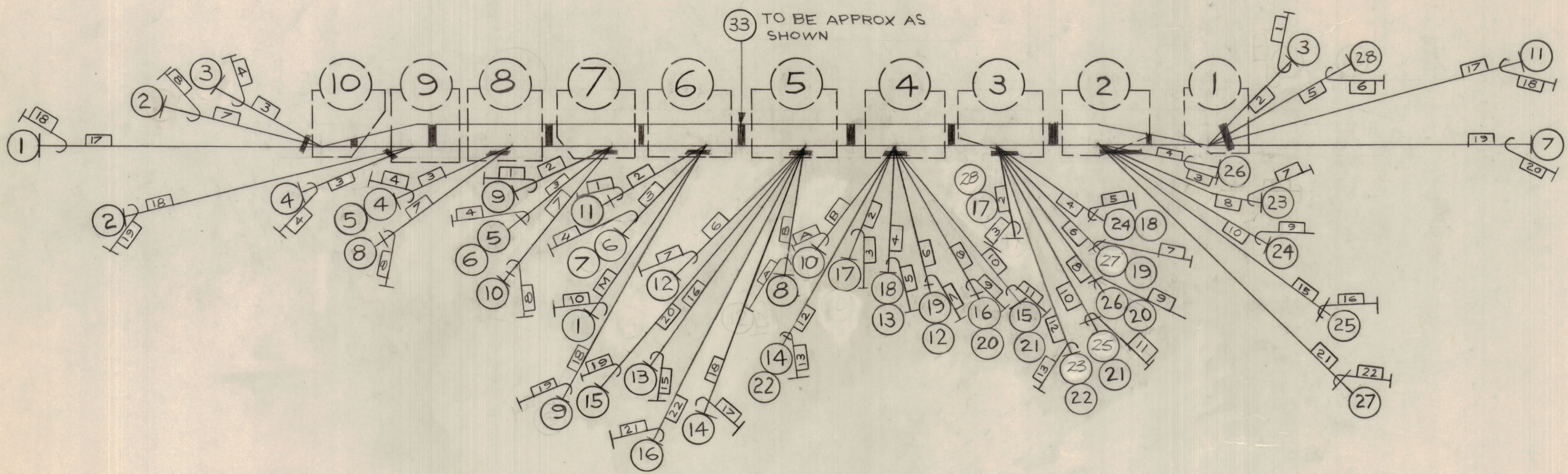


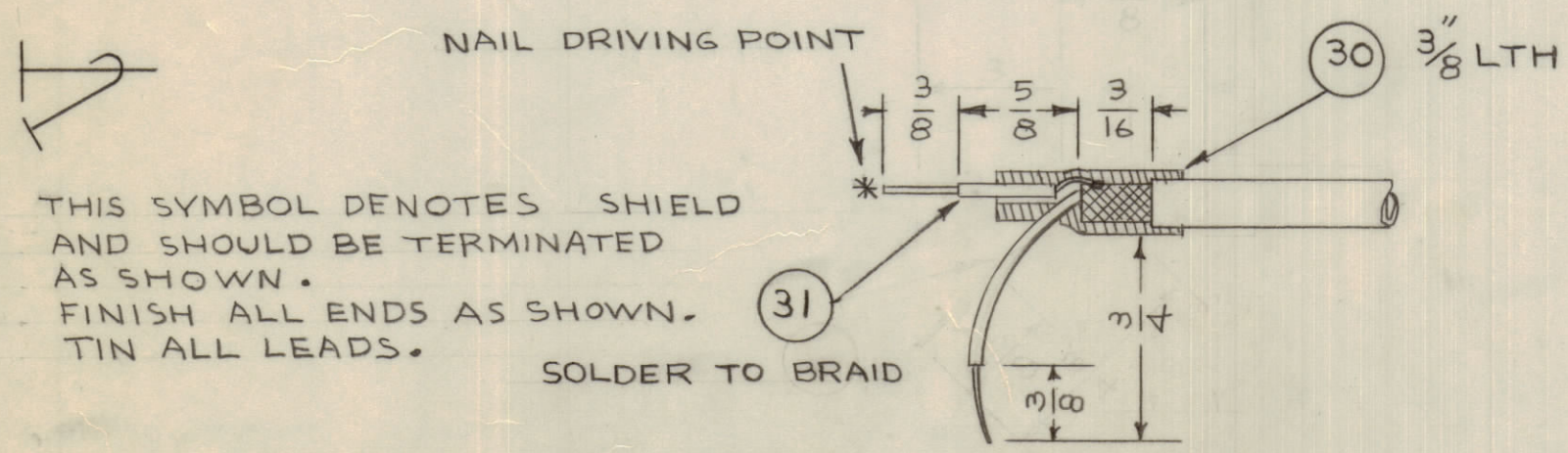
REVISIONS							
E.M.N.NO	DRAFT	CHKD	ZONE	LTR	DESCRIPTION	DATE	APPROVED
		KD	X1		REDRAWN FROM X W/CHANGES	1-23-70	
		KD	X2		REVISED DETAIL FOR ALLENS	2-4-70	
			X3		CHG OF ITEMS 28, 27, 25, & 23	4-4-70	
	a)				ORIGINAL RELEASE FOR PRODUCTION	1/29/71	



TO BE USED ONLY WHEN ITEM 33 IS NOT AVAILABLE

M	1
B	2
A	1
22	2
21	2
20	2
19	4
18	5
17	2
16	2
15	2
13	2
12	2
11	2
10	4
9	3
8	6
7	7
6	4
5	3
4	8
3	8
2	5
1	3

QTY. REQ.	ITEM	PART NO.	DESCRIPTION	DESTINATION	SYMBOL
		CD 101-1M W	CORD, NYLON, LACING		
X	33	CU 142	STRAP, PLASTIC, HOLD DOWN		
X	32	BS100	SOLDER, TIN ALLOY		
X	31	LWC26 (7)UO	WIRE, ELECTRICAL		
X	30	PXB30-12-1	INSULATION, SLEEVING, ELECTRICAL		
82	29	LA 101	TABLE * -		
1	28	RG 174/U	3 1 XA6 PIN 2	XA5 PIN 5	
1	27		3 2 XA6 PIN 5	XA5 PIN 21	
1	26		3 2 XA6 PIN 8	XA5 PIN 4	
1	25		3 2 XA6 PIN 10	XA5 PIN 15	
1	24		3 2 XA6 PIN 4	XA5 PIN 10	
1	23		3 2 XA6 PIN 12	XA5 PIN 8	
1	22		4 3 XA7 PIN 12	XA6 PIN 12	
1	21		4 3 XA7 PIN 10	XA6 PIN 10	
1	20		4 3 XA7 PIN 8	XA6 PIN 8	
1	19		4 3 XA7 PIN 6	XA6 PIN 6	
1	18		4 3 XA7 PIN 4	XA6 PIN 4	
1	17		4 3 XA7 PIN 2	XA6 PIN 2	
1	16		5 4 XA8 PIN 22	XA7 PIN 8	
1	15		5 4 XA8 PIN 20	XA7 PIN 10	
1	14		5 4 XA8 PIN 18	XA7 PIN 12	
1	13		5 4 XA8 PIN 16	XA7 PIN 4	
1	12		5 4 XA8 PIN 6	XA7 PIN 6	
1	11		6 1 XA9 PIN 2	XA4 PIN 17	
1	10		7 4 XA10 PIN 7	XA6 PIN 8	
1	9		7 6 XA10 PIN 2	XA9 PIN 18	
1	8		8 5 XA11 PIN 7	XA7 PIN B	
1	7		6 1 XA9 PIN 3	XA4 PIN 19	
1	6		7 6 XA10 PIN 3	XA9 PIN 3	
1	5		8 7 XA11 PIN 3	XA10 PIN 3	
1	4		9 8 XA12 PIN 3	XA11 PIN 3	
1	3		10 1 XA13 PIN 3	XA4 PIN 2	
1	2		10 9 XA13 PIN 7	XA12 PIN 18	
1	1	RG 174/U	10 6 XA13 PIN 17	XA8 PIN M	



SYMBOL DENOTES

- = ITEM NOS
- (with dashed outline) = BREAKOUT LOCATIONS
- = TAGS

THIS SYMBOL DENOTES SHIELD AND SHOULD BE TERMINATED AS SHOWN. FINISH ALL ENDS AS SHOWN. TIN ALL LEADS.

HFSR - 4		
QTY / UNIT	MODEL USED ON	ASS'Y NO.
APPLICATION		
CODE		
MATERIAL		
FINISH		

UNLESS OTHERWISE SPECIFIED DIMENSIONS ARE IN INCHES AND INCLUDE CHEMICALLY APPLIED OR PLATED FINISHES	FINAL APPROVAL	DATE
TOLERANCES ON	MECH. DES.	DATE
DECIMALS	ELECT. DES.	DATE
.X ± .05	CHECKED	DATE
.XX ± .01	DRAWN	DATE
.XXX ± .005	Deterlein	1-23-70

THE TECHNICAL MATERIEL CORP. MAMARONECK, NEW YORK			
WIRING HARNESS BR.			
RF (FRONT JUMPERS)			
SIZE	CODE IDENT NO.	DWG NO.	ISSUE
D	82679	CA 1530	1
SCALE FULL			SHEET OF

NOTICE TO PERSONS RECEIVING THIS DRAWING
THE TECHNICAL MATERIEL CORPORATION claims proprietary right in the material disclosed herein. This drawing is issued in confidence for engineering information only and may not be reproduced or used to manufacture anything shown herein without permission from THE TECHNICAL MATERIEL CORPORATION to the user. This drawing is loaned for mutual assistance and is subject to recall at any time.