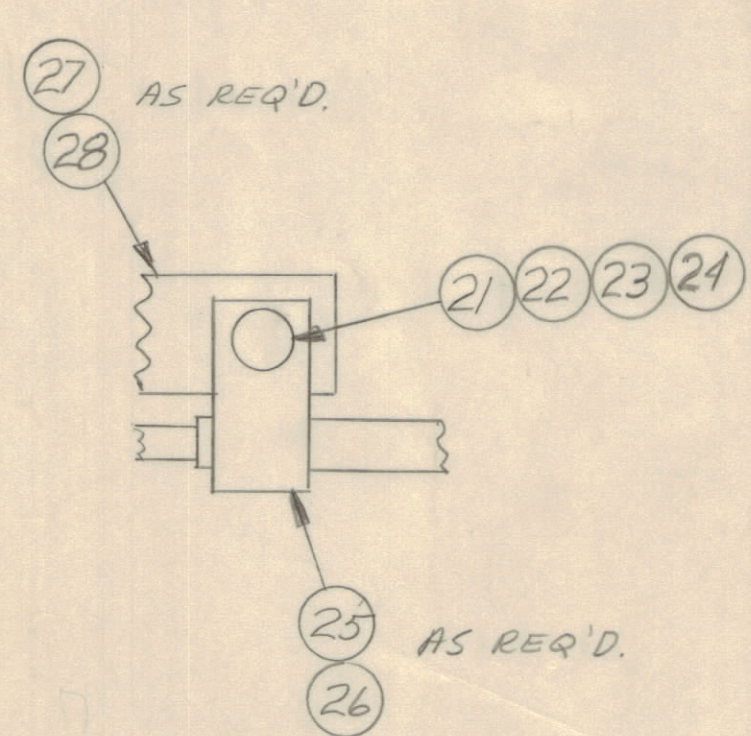
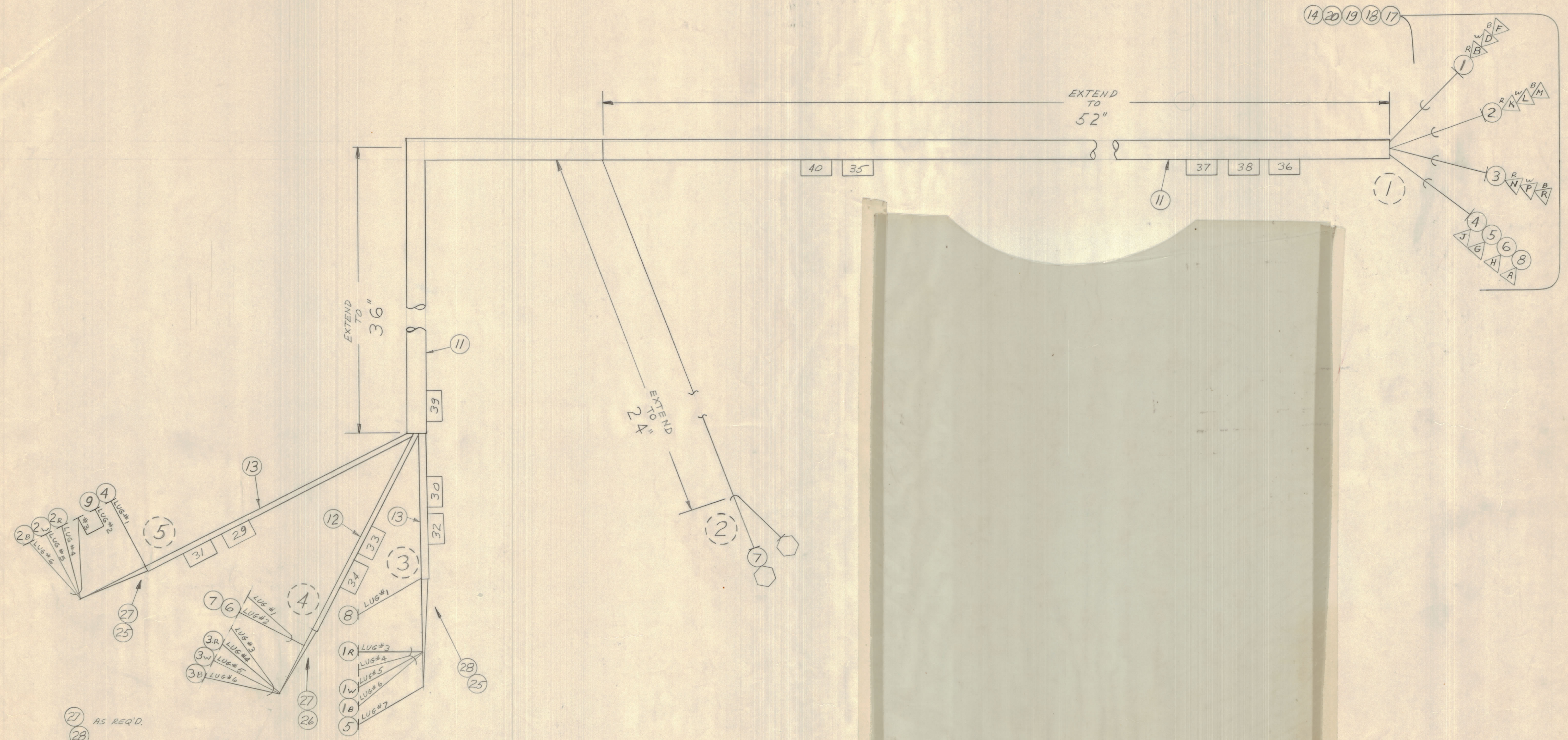


REVISIONS							
E.M.N.O.	DRAFT	CHKD	ZONE	LTR	DESCRIPTION	DATE	APPROVED
	KD				ORIGINAL RELEASE FOR PRODUCTION	11-29-69	



QTY / UNIT	MODEL USED ON	ASS'Y NO.
	SBTM-350EA	RAK195
APPLICATION		
CODE		
NOTICE TO PERSONS RECEIVING THIS DRAWING THE TECHNICAL MATERIEL CORPORATION claims proprietary right in the material disclosed hereon. This drawing is issued in confidence for engineering information only and may not be reproduced or used to manufacture anything shown hereon without permission from THE TECHNICAL MATERIEL CORPORATION to the user. This drawing is loaned for mutual assistance and is subject to recall at any time.		

UNLESS OTHERWISE SPECIFIED DIMENSIONS ARE IN INCHES AND INCLUDE CHEMICALLY APPLIED OR PLATED FINISHES	
TOLERANCES ON DECIMALS .X ± .05 .XX ± .01 .XXX ± .005	TOLERANCES ON FRACTIONS ± 1/64 ANGLES ± 0° -30'
MATERIAL	FINISH

QTY. REQ.	ITEM	PART NO.	DESCRIPTION	SYMBOL
LIST OF MATERIAL				
FINAL APPROVAL		DATE	THE TECHNICAL MATERIEL CORP.	
MECH. DES.		DATE	MAMARONECK, NEW YORK	
ELECT. DES.		DATE	WIRING HARNESS BRCHD	
CHECKED		DATE		
DRAWN		DATE		
SIZE	CODE	IDENT NO.	DWG NO.	ISSUE
D	82679	CA1519		Ø
SCALE		SHEET OF		



REQ.	ITEM NO.	PART NO.	BREAK OUT		DESTINATION OR DESCRIPTION	
			FROM	TO	FROM	TO
	1	WI142-3 R	1	3	P710 Pin B	E706 Lug 3
	"	" W	1	3	↕	↕
	"	" B	1	3	↕	↕
	"	" 5	1	3	↕	↕
	2	WI142-3 R	1	5	↕	E706
	"	" W	1	5	↕	E704
	"	" B	1	5	↕	↕
	"	" S	1	5	↕	↕
	3	WI142-3 R	1	4	↕	E704
	"	" W	1	4	↕	E705
	"	" B	1	4	↕	↕
	"	" S	1	4	↕	↕
	4	MWC22(7)U1	1	5	↕	E705
	5	MWC22(7)U2	1	3	↕	E704
	6	MWC22(7)SJS	1	4	P710 Pin H	E706
	7	MWC22(7)SJS	2	4	AX5040	E705
	8	MWC20(7)U0	1	3	P710 Pin A	E706
	9	MWC20(7)U0	5	5	E704 Lug 2	E704 Lug 3
	10					
	11	PX100-1-500			INS, SLVG, BLK	
	12	PX100-1-330			↕	↕
	13	PX100-1-263			↕	↕
	14	PX100-1-106			↕	↕
	15	PX830-8-1			↕	↕
	16	PX830-12-1			↕	↕
	17	MS3106B28-11P			INS, SLVG, SHRINK	
1	18	MS3057-16			CONN, PL, ML 22/C	P710
1	19	MS3420-16A			CLP, CBL, EL, CONN	
					BUSH, RUBBER	



REQ.	ITEM NO.	PART NO.	BREAKOUT		DESTINATION OR DESCRIPTION	
			FROM	TO	FROM	TO
1	20	MS3420-12A			BUSH, RUBBER	
3	21	SCBP0632BN6			SCREW, MACH	
3	22	FW06HBN			WASH, FLAT	
3	23	LWEO6MRN			WASH, LK, EXT	
3	24	NTH0632BN8			NUT, PLN, HEX	
2	25	CU102-3			CLP, LOOP, NYLON	
1	26	CU102-4			CLP, LOOP, NYLON	
2	27	TM105-6AR			TERM. BD., FNG	E704 E705
1	28	TM105-8AR			TERM. BD, FNG	E706
1	29	LA107-14-E704			SLV, MKR, CBL	
1	30	-14-E706				
1	31	-14-TB103				
1	32	-14-TB105				
1	33	-15-E705				
1	34	-15-TB104				
1	35	-17-CA1519				
1	36	-17-J501				
1	37	-17-P710				
1	38	-17-PSP-350				
1	39	-17-SME				
1	40	LA107-17-W709			SLV, MKR, CBL	
	41	BS100			SOLDER, TIN, ALY	
	42	CD101-1MW			CORD, NYLON, LACING	
	43	TA102-1			TAPE, ELEC	