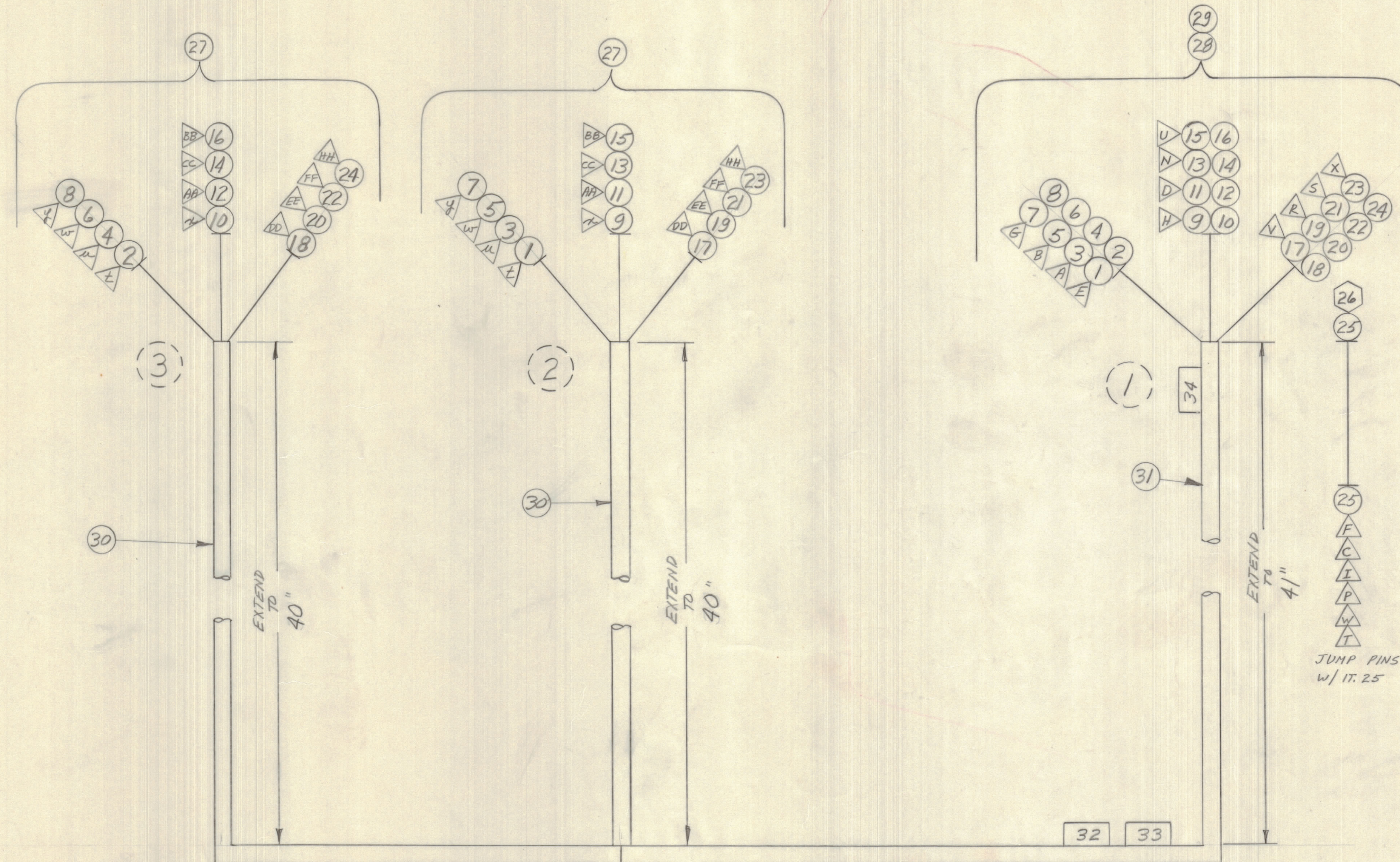


REVISIONS							
E.M.N.O.	DRAFT	CHKD	ZONE	LTR	DESCRIPTION	DATE	APPROVED
—	KD				ORIGINAL RELEASE FOR PRODUCTION	11/24/69	



37	TA102-1	TAPE, ELEC								
36	CD101-17W	CORD, NYLON, LACING								
35	BS100	SOLDER, TIN, ALLOY								
1	34	LA107-16-W7J1	SLV, MKR, CBL							
1	33	LA107-16-W7	SLV, MKR, CBL							
1	32	LA107-16-CA1503	SLV, MKR, CBL							
31	PX100-1-438	INS, SLVG, BLK								
30	PX100-1-330	INS, SLVG, BLK								
29	PX100-1-106	INS, SLVG, BLK								
1	28	MS3102A28-11S	CONN, RECDPHL, 22/C						J1	
24	27	PN123-24P	PIN, CONTACT CRIMP, 17L							
1	26	TE104-2	TERM, LUG							
25	MWC20(7)U0	WIRE, ELEC, INS								
1	3	24	MWC24(7)U96	J1	Pin	X	W4	P6	Pin	HH
1	2	23	96			X	W2			HH
1	3	22	6			S	W4			FF
1	2	21	6			S	W2			FF
1	3	20	95			R	W4			EE
1	2	19	95			R	W2			EE
1	3	18	5			Y	W4			DD
1	2	17	5			Y	W2			DD
1	3	16	94			U	W4			BB
1	2	15	94			U	W2			BB
1	3	14	4			N	W4			CC
1	2	13	4			N	W2			CC
1	3	12	93			D	W4			AA
1	2	11	93			D	W2			AA
1	3	10	3			H	W4			Z
1	2	9	3			H	W2			Z
1	3	8	92			G	W4			Y
1	2	7	92			G	W2			Y
1	3	6	2			B	W4			W
1	2	5	2			B	W2			W
1	3	4	91			A	W4			M
1	2	3	91			A	W2			M
1	3	2	1			E	W4			T
1	2	1	MWC24(7)U1	J1	Pin	E	W2	P6	Pin	T

UNLESS OTHERWISE SPECIFIED DIMENSIONS ARE IN INCHES AND INCLUDE CHEMICALLY APPLIED OR PLATED FINISHES

TOLERANCES ON
 DECIMALS .X ± .05
 .XX ± .01
 .XXX ± .005
 FRACTIONS ± 1/64
 ANGLES ± 0° - 30'

FINAL APPROVAL: [Signature] DATE: 20 Nov 69
 MECH. DES. DATE: 20 Nov 69
 ELECT. DES. DATE: 20 Nov 69
 CHECKED DATE: 17 Nov 69
 DRAWN DATE: 17 Nov 69

THE TECHNICAL MATERIEL CORP.
 MAMARONECK, NEW YORK

CABLE ASS'Y, OVL'D RDBK

SIZE: D CODE IDENT NO: 82679 DWG NO: CA1503 ISSUE: [Symbol]

1	RAK1342 (SBR-41A)	
QTY / UNIT	MODEL USED ON	ASSY NO.
APPLICATION		
CODE		
MATERIAL		
FINISH		

NOTICE TO PERSONS RECEIVING THIS DRAWING
 THE TECHNICAL MATERIEL CORPORATION claims proprietary right in the material disclosed herein. This drawing is issued in confidence for engineering information only and may not be reproduced or used to manufacture anything shown herein without permission from THE TECHNICAL MATERIEL CORPORATION to the user. This drawing is loaned for mutual assistance and is subject to recall at any time.