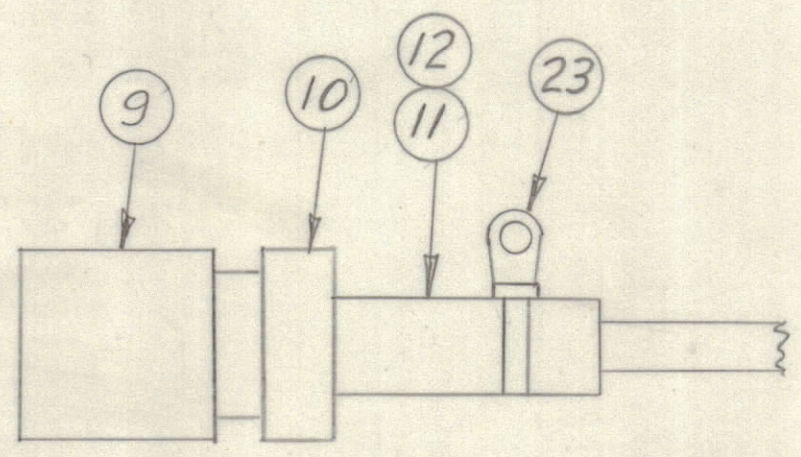
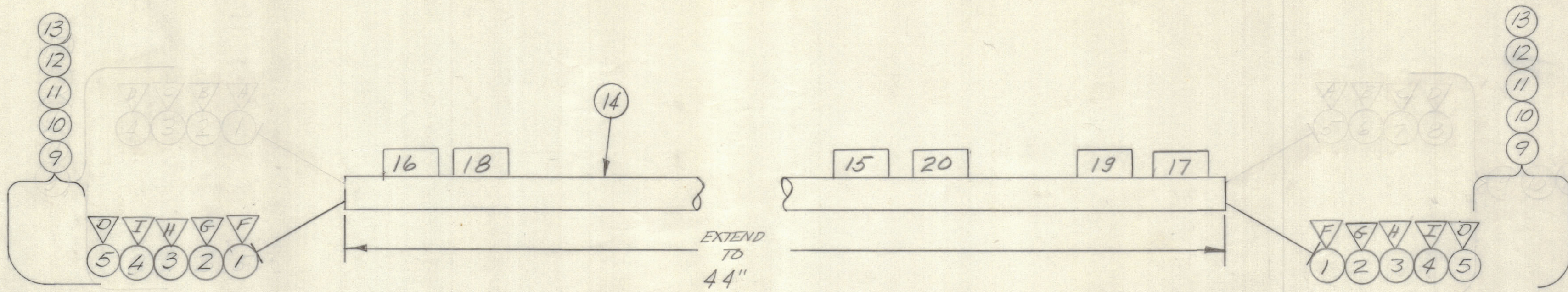


REVISIONS							
E.M.N.NO	DRAFT	CHKD	ZONE	LTR	DESCRIPTION	DATE	APPROVED
				Ø	ORIGINAL RELEASE FOR PRODUCTION	5/31/69	
20054	GE	W.		A	DELE ITEMS 6, 7, 8.	10/30/70	P.E.J.



QTY.	ITEM	PART NO.	DESCRIPTION	SYMBOL
2	23	CU142-3-9	STRAP, CABLE	
	22	CD101-1MW	CORD, NYLON LACING	
	21	BS100	SOLDER, TIN ALLOY	
1	20	LA107-15-W19	SLV, MKR, CBL	
1	19	-W19P2		
1	18	-W19P1		
1	17	-W5J6		
1	16	-W1J6		
1	15	LA107-15-CA1498	SLV, MKR, CBL	
	14	PX100-1-375	INS, SLVG, BLK	
	13	PX100-1-106	INS, SLVG, BLK	
2	12	MS3420-8A	BUSH, RUB.	
2	11	MS3420-12A	BUSH, RUB.	
2	10	MS3057-12	CLP, CBL, EL CONN	
2	9	MS3106B20-27P	CONN, PL, ML 14/C	P1, P2
	8	DELETED		
	7	DELETED		
	6	DELETED		
	5	MWC22(7)U5	P1 PIN D	P2 PIN D
	4	U4	I	I
	3	U3	H	H
	2	U2	G	G
	1	MWC22(7)U1	P1 PIN F	P2 PIN F

QTY. REQ.	ITEM	PART NO.	DESCRIPTION	SYMBOL
LIST OF MATERIAL				
FINAL APPROVAL: [Signature] DATE: 5/21/69				
MECH. DES. [Signature] DATE: 12/24/69				
ELECT. DES. [Signature] DATE: 12/24/69				
CHECKED: [Signature] DATE: 5/20/69				
DRAWN: [Signature] DATE: 12/24/69				
THE TECHNICAL MATERIEL CORP. MAMARONECK, NEW YORK				
CABLE ASS'Y, DIVERSITY				
SIZE	CODE	IDENT NO.	DWG NO.	ISSUE
C	82679	CA1498		A
SCALE				SHEET OF

QTY / UNIT	MODEL USED ON	ASS'Y NO.
1	DDRR-1042	RAK135-3
1	DDRR-10M	RAK127-2E

APPLICATION

CODE

NOTICE TO PERSONS RECEIVING THIS DRAWING
THE TECHNICAL MATERIEL CORPORATION claims proprietary right in the material disclosed herein. This drawing is issued in confidence for engineering information only and may not be reproduced or used to manufacture anything shown hereon without permission from THE TECHNICAL MATERIEL CORPORATION to the user. This drawing is loaned for mutual assistance and is subject to recall at any time.

UNLESS OTHERWISE SPECIFIED DIMENSIONS ARE IN INCHES AND INCLUDE CHEMICALLY APPLIED OR PLATED FINISHES

TOLERANCES ON

DECIMALS	FRACTIONS
.X ± .05	± 1/64
.XX ± .01	ANGLES
.XXX ± .005	± 0° -30'

MATERIAL

FINISH