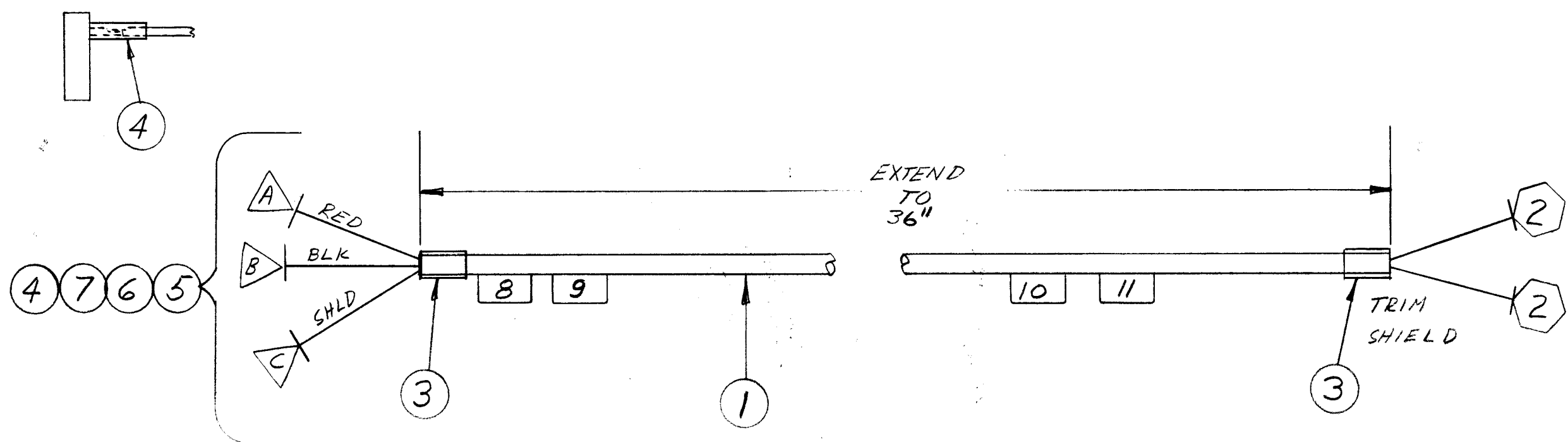


REVISIONS						
ZONE	LTR	DESCRIPTION	DATE	E.M.N.NO	DRAFT	CHKD APPD
	Ø	ORIG RELEASE FOR PROD	5/7/69		CV	



PART NO.	ITEM 8	ITEM 9	ITEM 10	ITEM 11
CA1495-1	LA107-12-W1J5	LA107-12-W10PI	LA107-12-W10	LA107-12-CA1495-1
CA1495-2	LA107-12-W1J5	LA107-12-W17PI	LA107-12-W17	LA107-12-CA1495-2
CA1495-3	LA107-12-W5J5	LA107-12-W18PI	LA107-12-W18	LA107-12-CA1495-3

REQ'D	ITEM	PART NUMBER	DESCRIPTION	SYM.
	12	BS100	SOLDER, TIN ALLOY	
1	11	SEE CHART	SLV, MKR, CBL	
1	10	SEE CHART	SLV, MKR, CBL	
1	9	SEE CHART	SLV, MKR, CBL	
1	8	SEE CHART	SLV, MKR, CBL	
1	7	MS3420-6A	BUSH, RUB.	
1	6	MS3057-6	CLP, CBL, EL CONN	
1	5	MS3106B14S-2P	CONN, PL, HL 4/C	PI
	4	PX100-1-106	INS, SLV, BLK	
	3	PXB30-12-1	INS, SLV, SHRINK	
2	2	TE120-2	TERM, LUG, SPADE	
	1	WI142-2	CABLE, SHIELDED	

POSE

LIST OF MATERIAL

UNLESS OTHERWISE SPECIFIED DIMENSIONS ARE IN INCHES AND INCLUDE CHEMICALLY APPLIED OR PLATED FINISHES

MECH. DES. DATE 5/7/69

ELECT. DES. DATE 7/24/69

CHECKED DATE 5/7/69

DRAWN DATE 7/24/69

THE TECHNICAL MATERIEL CORP.
MAMARONECK, NEW YORK

CABLE ASS'Y, SPKR.

SIZE B CODE IDENT. NO. 82679 DWG NO. CA1495 ISSUE Ø

SCALE SHEET OF

DDRR-10 ()

QTY / UNIT MODEL USED ON ASS'Y NO.

APPLICATION

CODE

NOTICE TO PERSONS RECEIVING THIS DRAWING
THE TECHNICAL MATERIEL CORPORATION claims proprietary right in the material disclosed hereon. This drawing is issued in confidence for engineering information only and may not be reproduced or used to manufacture anything shown hereon without permission from THE TECHNICAL MATERIEL CORPORATION to the user. This drawing is loaned for mutual assistance and is subject to recall at any time.