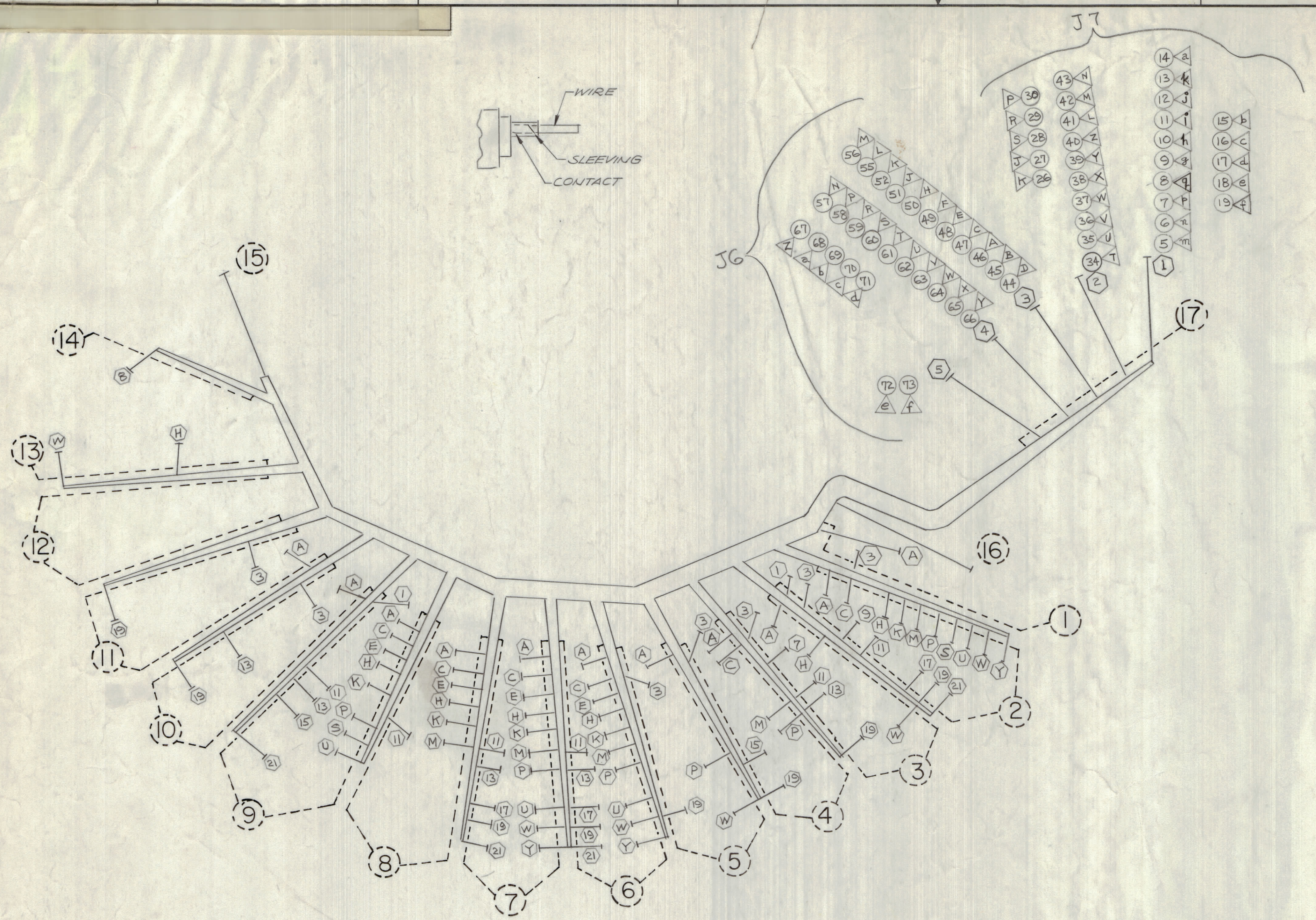
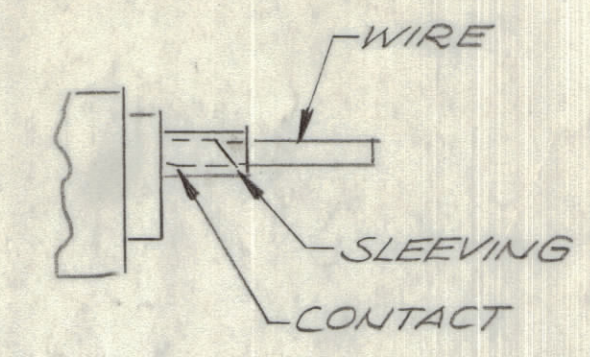


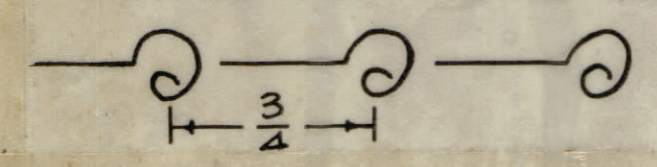
REVISIONS						
ZONE	LTR	DESCRIPTION	DATE	E.M.N. NO.	DRAFT	CHKD. APPD.
A		PIN CONV. LOC. REVISED	1/17/69	13213	LHA	



CA 1477 WIRING HARNESS BRANCHED RTTD-4 Sheet 1 of 3

REQ	ITEM	PART NUMBER	BREAKOUT FROM	BREAKOUT TO	DESTINATION OR DESCRIPTION FROM	DESTINATION OR DESCRIPTION TO
1		LWC26 (7) U1	2-P	4-P	A2 PIN R	A4 PIN P
2		WNC26 (7) U2	2-K	4-M	A4 PIN L	A4 PIN M
3		WNC26 (7) U2	2-P	4-C	A4 PIN P	A4 PIN C
4		WNC26 (7) U4	2-S	4-C	A4 PIN T	A4 PIN C
5		WNC26 (7) U1	2-S	17-1	A4 PIN S	J7 PIN n
6		WNC26 (7) U1	2-M	17-1	A4 PIN N	J7 PIN m
7		WNC26 (7) U1	2-H	17-1	A4 PIN J	J7 PIN p
8		WNC26 (7) U1	2-U	17-1	A4 PIN U	J7 PIN q
9		WNC26 (7) U1	2-Y	17-1	A4 PIN Y	J7 PIN h
10		WNC26 (7) U1	2-W	17-1	A4 PIN W	J7 PIN i
11		WNC26 (7) U1	2-W	17-1	A4 PIN W	J7 PIN j
12		WNC26 (7) U1	2-9	17-1	A4 PIN K	J7 PIN k
13		WNC26 (7) U1	2-K	17-1	A4 PIN J	J7 PIN a
14		WNC26 (7) U1	2-11	17-1	A4 PIN H	J7 PIN b
15		WNC26 (7) U1	2-H	17-1	A4 PIN H	J7 PIN c
16		WNC26 (7) U1	2-17	17-1	A4 PIN I	J7 PIN d
17		WNC26 (7) U1	2-21	17-1	A4 PIN I	J7 PIN e
18		WNC26 (7) U1	2-17	17-1	A4 PIN I	J7 PIN f
19		WNC26 (7) U1	2-19	17-1	A4 PIN I	J7 PIN B
20		WNC26 (7) U1	2-M	3-A	A4 PIN M	A3 PIN B
21		WNC26 (7) U1	2-a-A	3-H	A4 PIN A	A3 PIN H
22		WNC26 (7) U1	2-C	3-7	A4 PIN C	A3 PIN C
23		WNC26 (7) U1	2-3	3-11	A4 PIN C	A3 PIN 12
24		WNC26 (7) U1	2-C	3-13	A4 PIN D	A3 PIN 13
25		LWC26 (7) U1	3-A	4-15	A3 PIN B	A4 PIN 16
26		LWC26 (7) U1	2-M	17-2	A2 PIN M	J7 PIN K
27		LWC26 (7) U1	2-A	17-2	A2 PIN B	J7 PIN S
28		LWC26 (7) U1	2-C	17-2	A2 PIN C	J7 PIN R
29		LWC26 (7) U1	2-3	17-2	A2 PIN C	J7 PIN D
30		LWC26 (7) U1	2-C	17-2	A2 PIN C	J7 PIN P
31		LWC26 (7) U1	2-1	3-W	A2 PIN 2	A3 PIN W
32		LWC26 (7) U1	6-C	15	A6 PIN C	GRD PIN J
33		LWC26 (7) U1	6-E	15	A6 PIN E	GRD PIN J
34		LWC26 (7) U1	6-K	17-2	A6 PIN K	J7 PIN T
35		LWC26 (7) U1	6-M	17-2	A6 PIN M	J7 PIN U
36		LWC26 (7) U1	6-Y	17-2	A6 PIN Y	J7 PIN V
37		LWC26 (7) U1	6-17	17-2	A6 PIN 18	J7 PIN W
38		LWC26 (7) U1	6-13	17-2	A6 PIN 14	A6 PIN X
39		LWC26 (7) U1	6-13	17-2	A6 PIN 13	GRD PIN Y
40		LWC26 (7) U1	7-C	17-2	A7 PIN C	A2 PIN Z
41		LWC26 (7) U1	7-E	17-2	A7 PIN E	A2 PIN L
42		LWC26 (7) U1	7-K	17-2	A7 PIN K	A2 PIN M
43		LWC26 (7) U1	7-M	17-2	A7 PIN M	A2 PIN N
44		LWC26 (7) U1	7-Y	17-3	A7 PIN Y	J7 PIN D
45		DELETED	7-17	17-3	A7 PIN 18	J6 PIN B
46		DELETED	7-13	17-3	A7 PIN 14	J6 PIN A
47		DELETED	7-13	17-3	A7 PIN 13	J6 PIN C
48		DELETED	8-C	17-3	A8 PIN C	J6 PIN E
49		DELETED	8-E	17-3	A8 PIN E	J6 PIN F
50		LWC26 (7) U93	8-K	17-3	A8 PIN K	J6 PIN H

UNLESS OTHERWISE SPECIFIED
WIRES SHOULD BE PLACED IN CABLE IN NUMERICAL SEQUENCE
AS THEY APPEAR IN ITEM COLUMN BY CATEGORY.
ALL R.F. CABLES
ALL SHIELDED CABLES
ALL OTHERS
SPACE LACING APPROXIMATELY 3/4" APART.



- SYMBOL DENOTES
- (W) = DETAILED BREAKOUT LOCATIONS
 - (16) } = STATION BREAKOUTS
 - (1) = ITEM No's
 - (A) = CONNECTOR PIN No's

RTTD - 4		
QTY / UNIT	MODEL USED ON	ASSY NO.
APPLICATION		
CODE		
MATERIAL		
FINISH		

QTY REQ.	ITEM	PART NO.	DESCRIPTION	SYMBOL
LIST OF MATERIAL				
THE TECHNICAL MATERIEL CORP. MAMARONECK, NEW YORK				
WIRING HARNESS, BRCHD.				
UNLESS OTHERWISE SPECIFIED DIMENSIONS ARE IN INCHES AND INCLUDE CHEMICALLY APPLIED OR PLATED FINISHES		FINAL APPROVAL S. DeMarco EM	DATE	
TOLERANCES ON		ELECT. DES.	DATE	
DECIMALS ± 0.05		CHECKED J. De	DATE	
FRACTIONS ± 1/64		DRAWN LHA	DATE 1/29/69	
XX ± .01				
ANGLES ± 0° - 30'				
XXX ± .005				
MATERIAL			SIZE	CODE IDENT. NO. DWG. NO.
FINISH			D	82679 CA 1477
SCALE				ISSUE A
			SHEET	OF