

REVISIONS						
ZONE	LTR	DESCRIPTION	DATE	E.M.N.NO	DRAFT	CHKD APPD
	X	EXP. RELEASE	8-27-68		S.D.L.	
	Ø	ORIG. RELEASE FOR PROD.	8-2-68		R.G.	

THIS SYMBOL DENOTES END OF INSULATION AND NAIL DRIVING POINT. WIRE MUST BE STRIPPED 3/4" BEYOND THIS POINT AND TINNED 1/2" UNLESS OTHERWISE SPECIFIED.

UNLESS OTHERWISE SPECIFIED WIRES SHOULD BE PLACED IN CABLE IN NUMERICAL SEQUENCE AS THEY APPEAR IN ITEM COLUMN BY CATEGORY.

1. ALL R.F. CABLES
2. ALL SHIELDED CABLES
3. ALL OTHERS

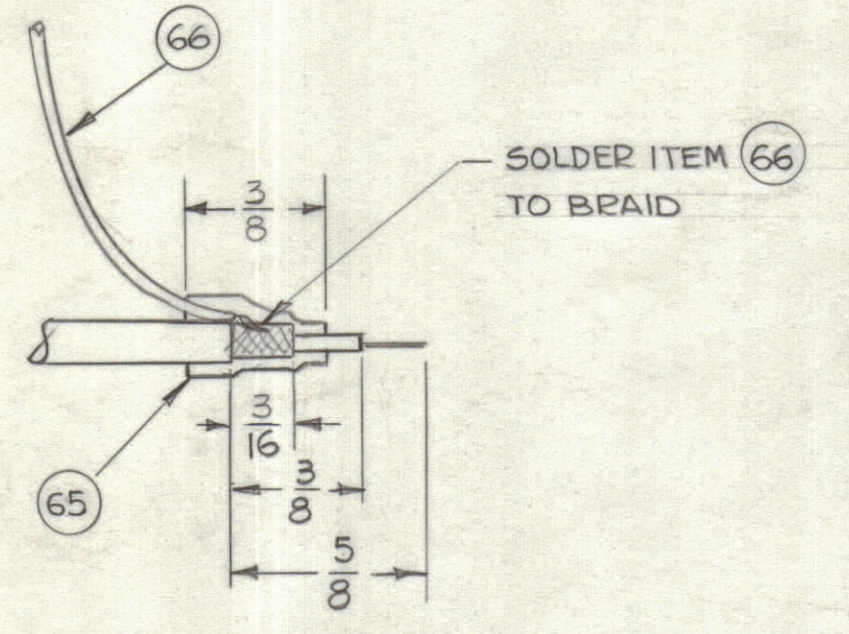
SPACE LACING APPROXIMATELY 3/4" APART.

SYMBOL DENOTES:

- = ITEM NOS
- = TAGS
- } = BREAK OUT

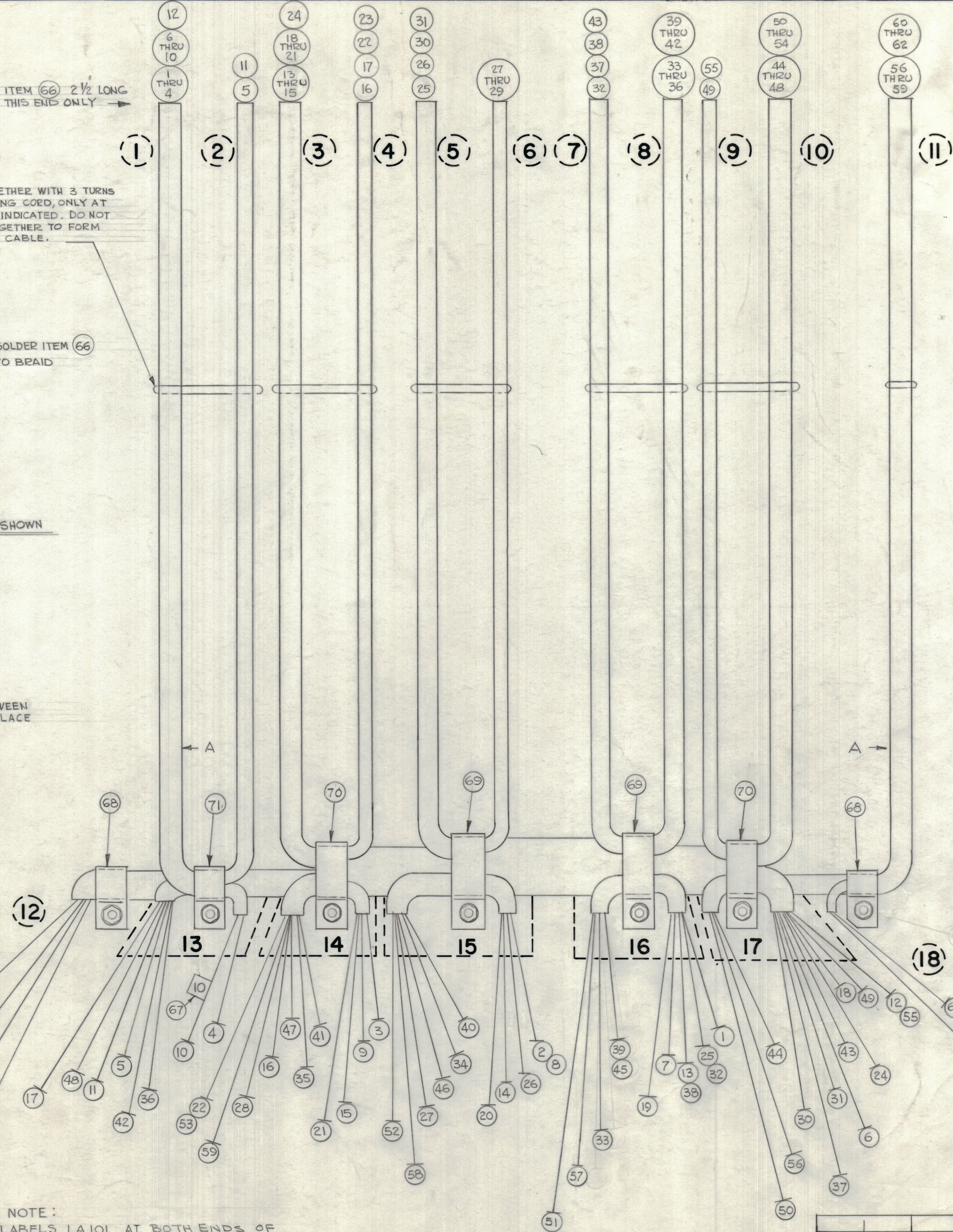
ITEM 66 2 1/2" LONG THIS END ONLY →

TIE TOGETHER WITH 3 TURNS OF LACING COED, ONLY AT POINTS INDICATED. DO NOT LACE TOGETHER TO FORM A RIGID CABLE.



FINISH ALL ENDS AS SHOWN

LACE TOGETHER BETWEEN POINT A-A - DO NOT LACE BREAK OUT



ITEM 66 4" LONG THIS END ONLY →

NOTE: USE LABELS LA101 AT BOTH ENDS OF EACH WIRE (1 1/2" FROM ENDS TYP.)

QTY. REQ.	ITEM	PART NO.	DESCRIPTION	SYMBOL
O. POSE LIST OF MATERIAL				
UNLESS OTHERWISE SPECIFIED DIMENSIONS ARE IN INCHES AND INCLUDE CHEMICALLY APPLIED OR PLATED FINISHES		FINAL APPROVAL <i>[Signature]</i>	DATE 10/4/68	<b>THE TECHNICAL MATERIEL CORP.</b> MAMARONECK, NEW YORK
TOLERANCES ON		ELECT. DES. <i>[Signature]</i>	DATE 10/3/68	
DECIMALS .X ± .05 .XX ± .01 .XXX ± .005		CHECKED <i>[Signature]</i>	DATE 8-27-68	
MATERIAL		DRAWN G.D.L.	DATE 8-27-68	SIZE CODE IDENT.NO. DWG NO. ISSUE
FINISH				D 82679 CA 1437 Ø
SCALE 1:1			SHEET OF	

VOX(-)-7		
QTY / UNIT	MODEL USED ON	ASS'Y NO.
	CODE	
NOTICE TO PERSONS RECEIVING THIS DRAWING		
THE TECHNICAL MATERIEL CORPORATION claims proprietary right in the material disclosed hereon. This drawing is issued in confidence for engineering information only and may not be reproduced or used to manufacture anything shown hereon without permission from THE TECHNICAL MATERIEL CORPORATION to the user. This drawing is loaned for mutual assistance and is subject to recall at any time.		







## R.F. CABLE

REQ	ITEM	PART NUMBER	BREAKOUT		DESTINATION OR DESCRIPTION	
			FROM	TO	FROM	TO
	51	RG174/U	10	16	R141	S104A PIN 5
	52		10	15	R140	S103A
	53		10	14	R139	S102A
	54		10	12	R138	S101A
	55		9	17	R137	S106A FRONT
	56		11	17	R136	S105A
	57		11	16	R135	S104A
	58		11	15	R134	S103A
	59		11	14	R133	S102A
	60		11	12	R132	S101A
	61		11	18	R131	S106A FRONT
	62	RG174/U	11	18	R130	S106A FRONT PIN 4
X	63	BS100				
X	64	CD101-1MW				
X	65	PX830-12-1				
X	66	LWC26(7)U0				
2EA	67	LA101				
2	68	CU102-4				
2	69	CU102-12				
2	70	CU102-10				
1	71	CU102-5				