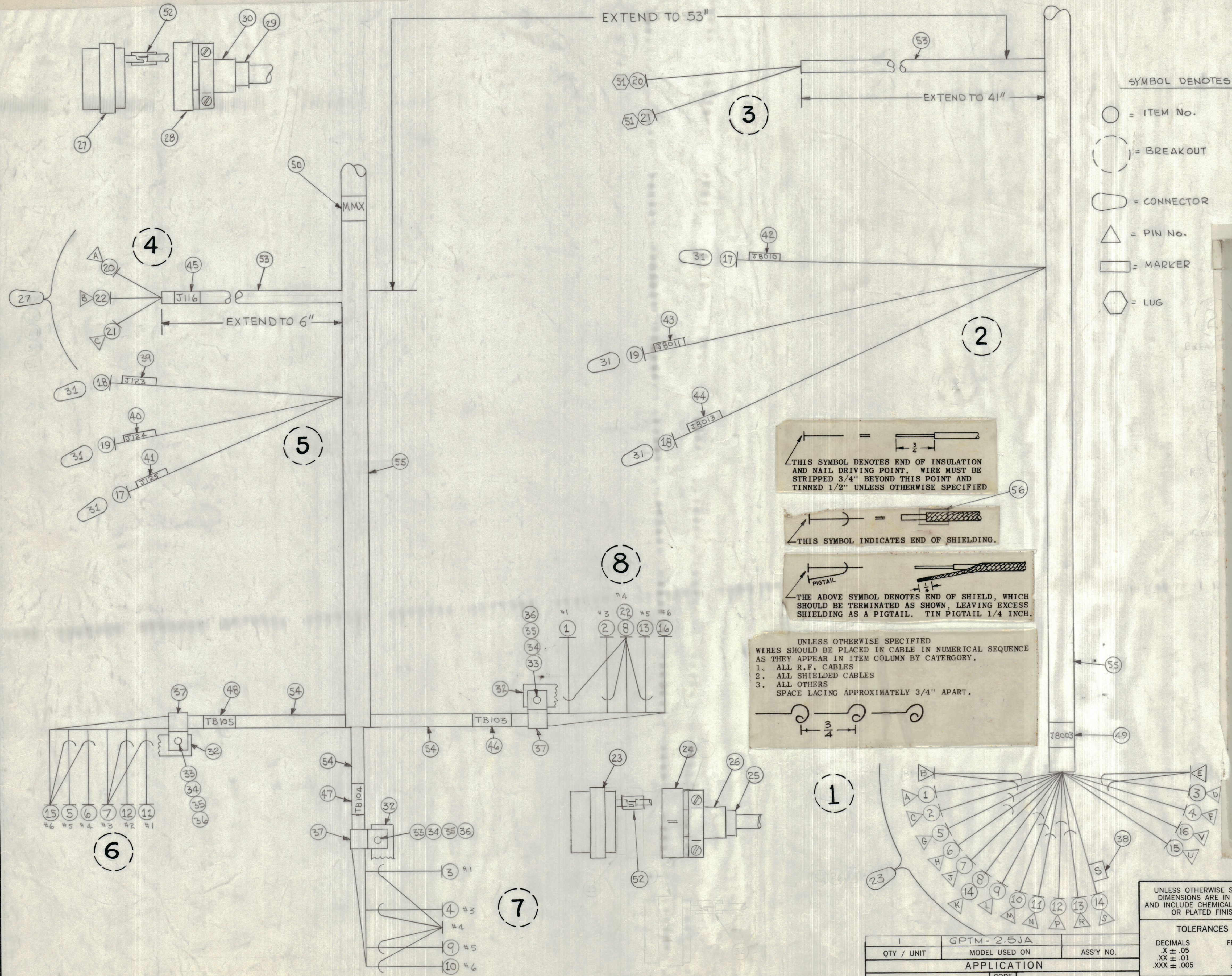


REVISIONS						
ZONE	LTR	DESCRIPTION	DATE	E.M.N.NO	DRAFT	CHKD APPD
X		EXP. RELEASE	5-8-68		GDL	
		ORIG. RELEASE FOR PROD.	5-20-68		R.S.	



- SYMBOL DENOTES
- = ITEM No.
 - ⊖ = BREAKOUT
 - ◡ = CONNECTOR
 - △ = PIN No.
 - ▭ = MARKER
 - ⬡ = LUG

THIS SYMBOL DENOTES END OF INSULATION AND NAIL DRIVING POINT. WIRE MUST BE STRIPPED 3/4" BEYOND THIS POINT AND TINNED 1/2" UNLESS OTHERWISE SPECIFIED

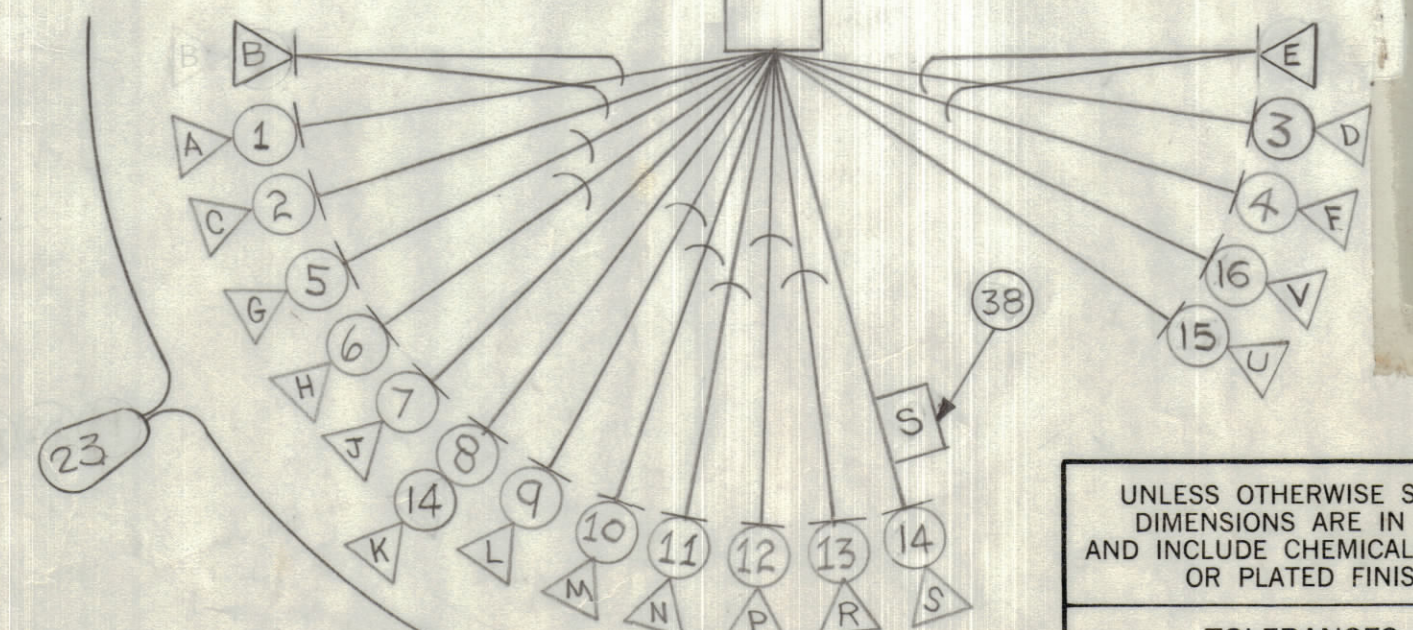
THIS SYMBOL INDICATES END OF SHIELDING.

THE ABOVE SYMBOL DENOTES END OF SHIELD, WHICH SHOULD BE TERMINATED AS SHOWN, LEAVING EXCESS SHIELDING AS A PIGTAIL. TIN PIGTAIL 1/4 INCH.

UNLESS OTHERWISE SPECIFIED WIRES SHOULD BE PLACED IN CABLE IN NUMERICAL SEQUENCE AS THEY APPEAR IN ITEM COLUMN BY CATEGORY.

- ALL R.F. CABLES
- ALL SHIELDED CABLES
- ALL OTHERS

SPACE LACING APPROXIMATELY 3/4" APART.



QTY. REQ.	ITEM	PART NO.	DESCRIPTION	SYMBOL
F. BUDETTI LIST OF MATERIAL				
FINAL APPROVAL		DATE	THE TECHNICAL MATERIEL CORP. MAMARONECK, NEW YORK WIRING, HARNESS BRANCHED GPTM-2.5JA	
<i>[Signature]</i>		5-20-68		
MECH. DES.		DATE		
<i>[Signature]</i>		5-17-68		
ELECT. DES.		DATE	SIZE CODE IDENT. NO. DWG NO. ISSUE D 82679 CA 1435	
<i>[Signature]</i>		5-17-68		
CHECKED		DATE		
<i>[Signature]</i>		5-17-68	SCALE 1:1 SHEET OF	
DRAWN		DATE		
<i>[Signature]</i>				

1	GPTM-2.5JA	
QTY / UNIT	MODEL USED ON	ASS'Y NO.
APPLICATION		
CODE	A	
<small>NOTICE TO PERSONS RECEIVING THIS DRAWING</small> <small>THE TECHNICAL MATERIEL CORPORATION claims proprietary right in the material disclosed hereon. This drawing is issued in confidence for engineering information only and may not be reproduced or used to manufacture anything shown hereon without permission from THE TECHNICAL MATERIEL CORPORATION to the user. This drawing is loaned for mutual assistance and is subject to recall at any time.</small>		