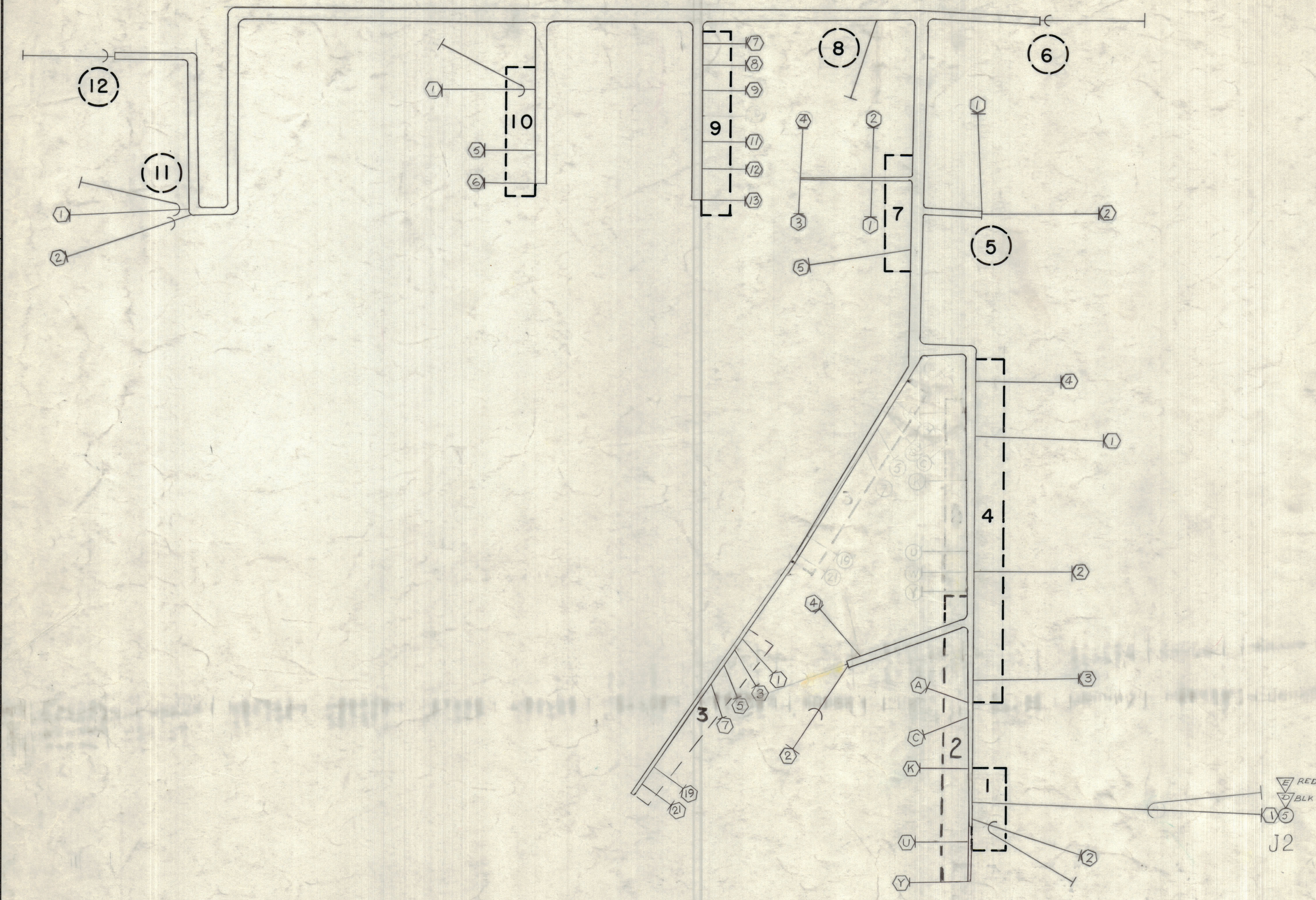
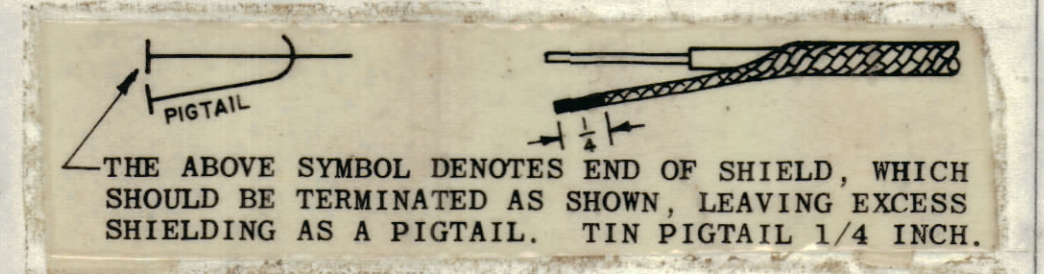
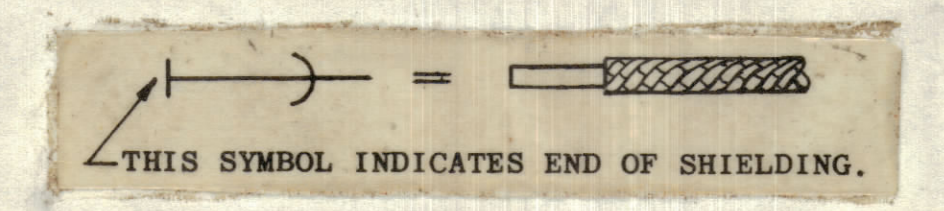
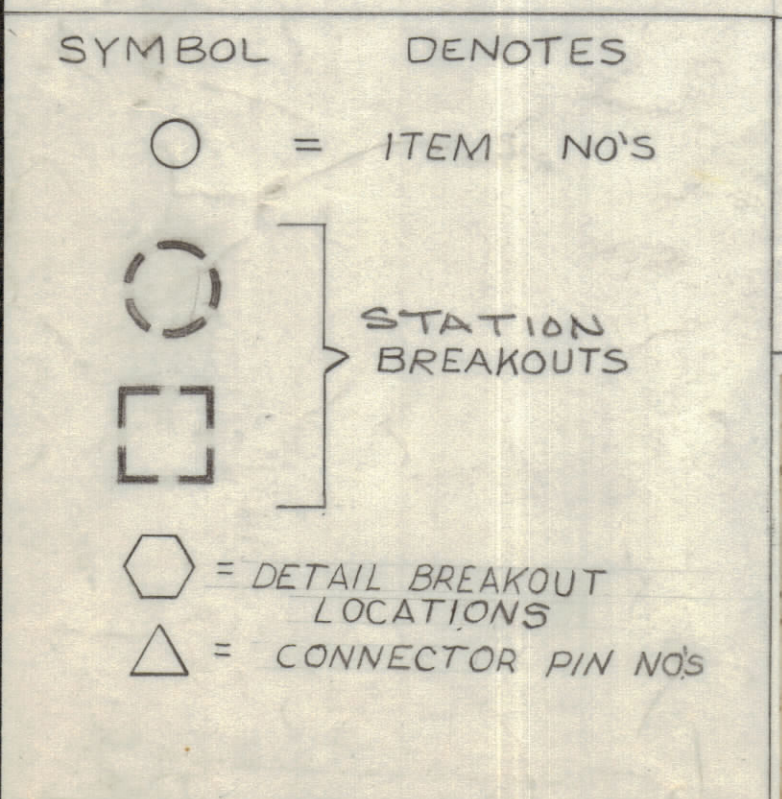


REVISIONS						
ZONE	LTR	DESCRIPTION	DATE	E.M.N. NO	DRAFT	CHKD APPD
X		EXP. RELEASE	4.17.68	+	W2	
D		ORIG. RELEASE	12-4-68			J.D. De
A		REV TO CONFORM W/ RUN LIST. ADD. J2	12-7-69	19212	96	J.H. De
B		PINS ON J2 REVERSED	9-21-68	19548	GE	W.O. De



CA 1426 WIRING HARNESS BRANCHED POWER SUPPLY RTIH-3 SHEET 1 OF 1

REQ	ITEM	PART NUMBER	BREAKOUT FROM	BREAKOUT TO	DESTINATION OR DESCRIPTION FROM	TO
1	WI142-5 BLK	12	1-2	F1	F11	
	RED	12	1-2	F2	F12	
2	WI142-5 BLK	12	11-1	F1	S1	
	RED	12	11-1	F2	S1	
3	WI142-5 BLK	10-1	11-2	T1 PIN 1	TB1 PIN 1	
	RED	10-1	11-2	T1 PIN 4	TB1 PIN 2	
4	WI142-5 BLK	10-1	6	T1 PIN 1	XA2 PIN 12	
	RED	10-1	6	T1 PIN 4	XA2 PIN 15	
5	WI142-5 BLK	1-1	2-2	J2 PIN D	XA10 PIN 4	
	RED	1-1	2-2	J2 PIN E	XA10 PIN 2	
6	LWC24 (7) U2	4-3	3-3	C3 (+)	GRD	
		4-3	3-1	C3 (-)	XA10 PIN 4	
7		0	4-3	4-4	CR2 (C)	
8		2	7-5	3-3		
9		92	5-2	2-C	R1	
10		91	9-11	2-A	T1 PIN 11	
11		9	9-9	3-3		
12		8	9-8	3-19		
13		8	9-7	3-21	T1 PIN 7	
14	LWC24 (7) U7				XA10 PIN 5	
15	NOT USED					
16	LWC22 (7) U7	4-1	3-5	C1 (-)		
		4-1	3-7	R2		
17	LWC22 (7) U6	4-1	3-5	C1 (+)		
18	LWC24 (7) U92	4-2	2-U	C2 (+)		
19	LWC24 (7) U92	4-2	2-Y	GRD		
20	LWC24 (7) U0	4-2	2-Y	Q1 (B)		
21	LWC24 (7) U5	5-1	2-K	R3		
22	LWC22 (7) U4	7-1	2-K	R3	XA10 PIN A	
23	LWC22 (7) U0	7-3	3-1	GRD	Q1 (E)	
24	LWC22 (7) U0	4-4	2-A	R3	GRD	
25	LWC22 (7) U4	7-1	5-1	C2 (-)	CR1 (+)	
26	LWC24 (7) U0	4-2	4-4	C1 (+)	CR1 (+)	
27	LWC22 (7) U6	4-1	8	Q1 (C)	CR1 (AC)	
28	LWC22 (7) U6	5-1	8	T1 PIN 5	CR1 (AC)	
29	LWC22 (7) U5	10-5	8	T1 PIN 6	CR1 (-)	
30	LWC22 (7) U6	10-6	8	R2	C3 (+)	
31	LWC22 (7) U90	7-2	8	R1		
32	LWC22 (7) U2	7-5	4-3			
33	NOT USED					
34	NOT USED					
35	LWC24 (7) U92	9-12	2-4	T1 PIN 12	XA2 PIN W	
36	LWC24 (7) U93	9-13	2-4	T1 PIN 13	XA2 PIN X	
37	CD101-1MW			CORD, NYLON LACING		
38	BS100			SOLDER, TIN ALLOY		
39	MS3102A-20-27P			CONN, RECP, ML		
40						

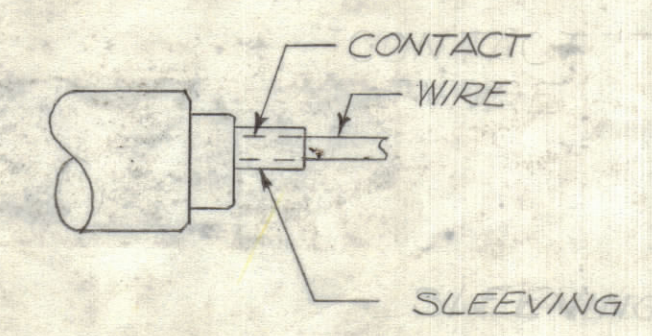


UNLESS OTHERWISE SPECIFIED WIRES SHOULD BE PLACED IN CABLE IN NUMERICAL SEQUENCE AS THEY APPEAR IN ITEM COLUMN BY CATEGORY.

- ALL R.F. CABLES
- ALL SHIELDED CABLES
- ALL OTHERS

SPACE LACING APPROXIMATELY 3/4" APART.

THIS SYMBOL DENOTES END OF INSULATION AND NAIL DRIVING POINT. WIRE MUST BE STRIPPED 3/4" BEYOND THIS POINT AND TINNED 1/2" UNLESS OTHERWISE SPECIFIED.



RTIH-3		
QTY / UNIT	MODEL USED ON	ASSY NO.
APPLICATION		
CODE	5401-451	
NOTICE TO PERSONS RECEIVING THIS DRAWING		
THE TECHNICAL MATERIEL CORPORATION claims proprietary right in the material disclosed hereon. This drawing is issued in confidence for engineering information only and may not be reproduced or used to manufacture anything shown hereon without permission from THE TECHNICAL MATERIEL CORPORATION to the user. This drawing is loaned for mutual assistance and is subject to recall at any time.		

QTY. REQ.	ITEM	PART NO.	DESCRIPTION	SYMBOL
S. DE MARCO LIST OF MATERIAL SK 3253-002				
THE TECHNICAL MATERIEL CORP. MAMARONECK, NEW YORK				
WIRING HARNESS, BRANCHED				
UNLESS OTHERWISE SPECIFIED DIMENSIONS ARE IN INCHES AND INCLUDE CHEMICALLY APPLIED OR PLATED FINISHES				
TOLERANCES ON				
DECIMALS		FRACTIONS		
X ± .05		± 1/64		
XX ± .01		ANGLES		
XXX ± .005		± 0°-30'		
MATERIAL				
FINISH				
SIZE CODE IDENT. NO. DWG. NO.				
D 82679 CA 1426				
SCALE SHEET OF				