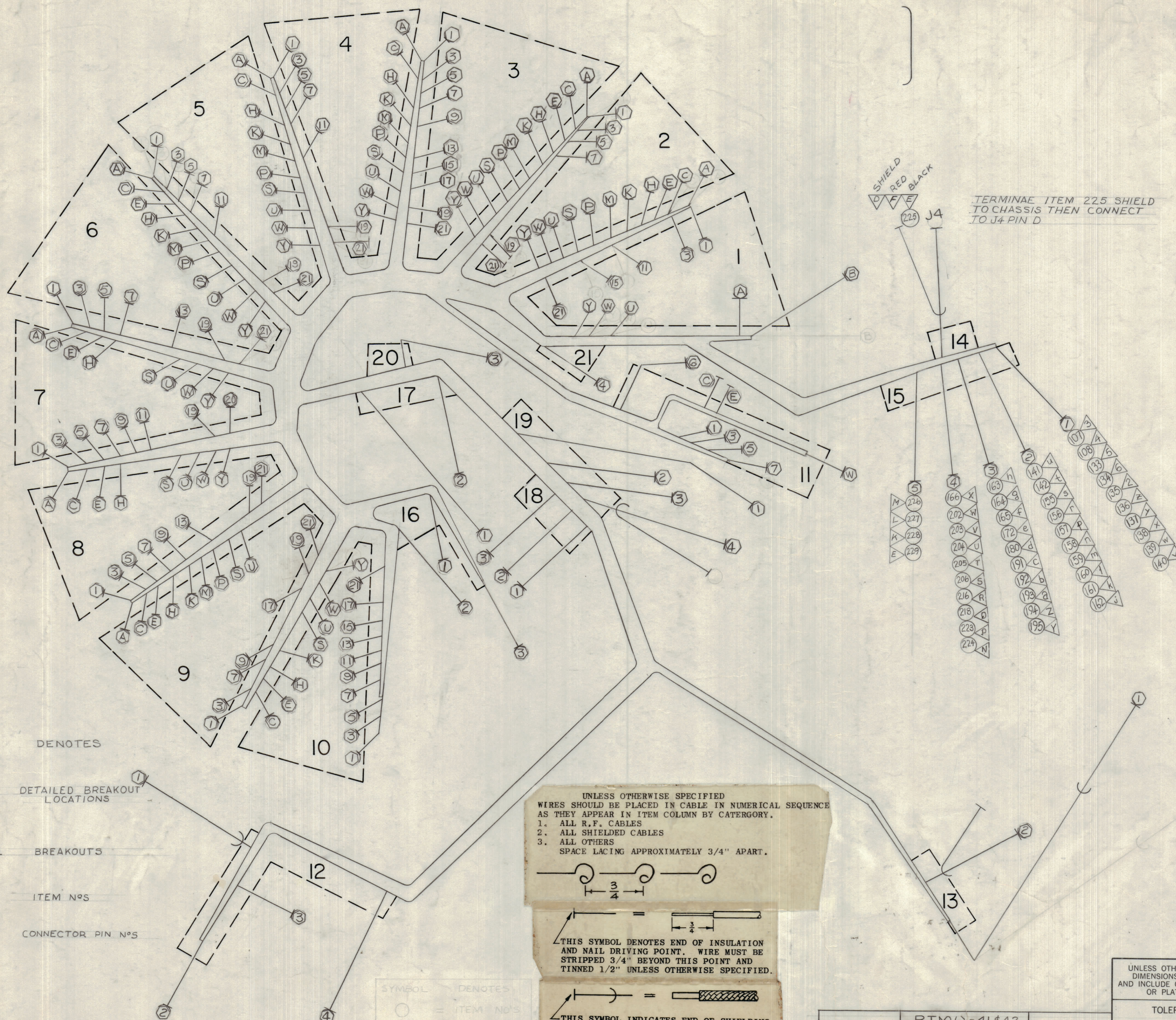
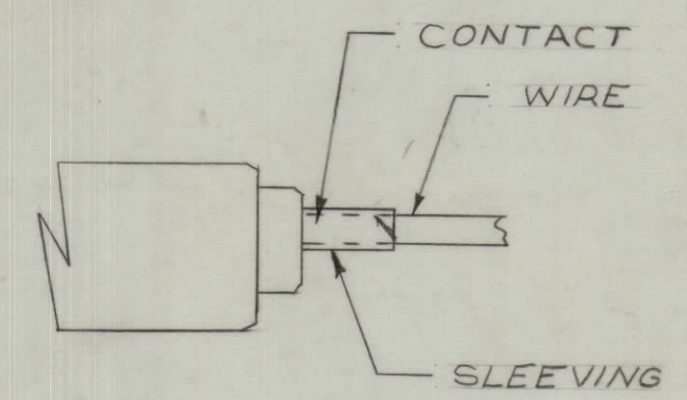


REVISIONS						
ZONE	LTR	DESCRIPTION	DATE	E.M.N.NO	DRAFT	CHKD APPD
	X	EXP. RELEASE	4-17-68			
	X1	REV & UPDATED	1-30-69		GE	
	Ø	ORIGINAL RELEASE FOR PRODUCTION	2-4-69		EG	



TERMINATE ITEM 225 SHIELD TO CHASSIS THEN CONNECT TO J4 PIN D



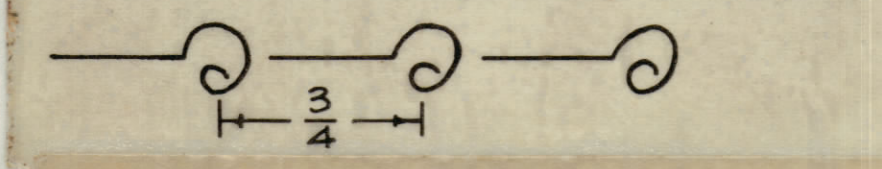
NOTE: TERMINATE JACKETS OF ITEMS 1, 4, 25, 225, WITH ITEM 232

- SYMBOL DENOTES
- = DETAILED BREAKOUT LOCATIONS
 - = BREAKOUTS
 - = ITEM N°S
 - = CONNECTOR PIN N°S

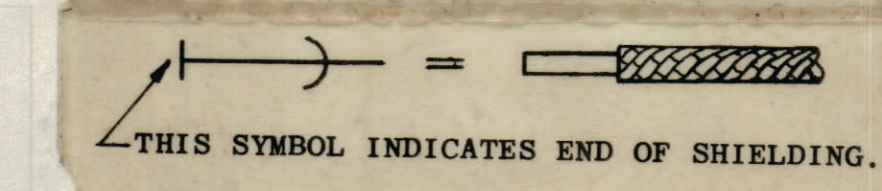
UNLESS OTHERWISE SPECIFIED WIRES SHOULD BE PLACED IN CABLE IN NUMERICAL SEQUENCE AS THEY APPEAR IN ITEM COLUMN BY CATEGORY.

1. ALL R.F. CABLES
2. ALL SHIELDED CABLES
3. ALL OTHERS

SPACE LACING APPROXIMATELY 3/4" APART.



THIS SYMBOL DENOTES END OF INSULATION AND NAIL DRIVING POINT. WIRE MUST BE STRIPPED 3/4" BEYOND THIS POINT AND TINNED 1/2" UNLESS OTHERWISE SPECIFIED.



THIS SYMBOL INDICATES END OF SHIELDING.

THE ABOVE SYMBOL DENOTES END OF SHIELD, WHICH SHOULD BE TERMINATED AS SHOWN, LEAVING EXCESS SHIELDING AS A PIGTAIL. TIN PIGTAIL 1/4 INCH.

RTMO-41#42	
QTY / UNIT	MODEL USED ON
APPLICATION	
CODE	A S401-451

NOTICE TO PERSONS RECEIVING THIS DRAWING
 THE TECHNICAL MATERIEL CORPORATION claims proprietary right in the material disclosed herein. This drawing is issued in confidence for engineering information only and may not be reproduced or used to manufacture anything shown herein without permission from THE TECHNICAL MATERIEL CORPORATION to the user. This drawing is loaned for mutual assistance and is subject to recall at any time.

UNLESS OTHERWISE SPECIFIED DIMENSIONS ARE IN INCHES AND INCLUDE CHEMICALLY APPLIED OR PLATED FINISHES

TOLERANCES ON	DECIMALS	FRACTIONS
	.X ± .05	± 1/64
	.XX ± .01	ANGLES
	.XXX ± .005	± 0° - 30'

QTY. REQ.	ITEM	PART NO.	DESCRIPTION	SYMBOL
S. DE MARCO				
LIST OF MATERIAL				
THE TECHNICAL MATERIEL CORP. MAMARONECK, NEW YORK				
CABLE, MAIN				
SIZE	CODE IDENT. NO.	DWG NO.	ISSUE	
D	82679	CA1425	Ø	
SCALE 1:1				SHEET OF

REQ	ITEM	PART NUMBER	BREAKOUT		DESTINATION OR DESCRIPTION	TO
			FROM	TO		
					FL2, FL1	
1		WI142-5 (0-2)	13-2	12-4	F1	F2, F1
2		MWC20(7)U0	12-4	12-1	F2	S1
3		MWC20(7)U2	12-4	12-1	S1	T1
4		WI142-5 (0-2)	12-1	19-4	T1	A1
5		MWC20(7)U5	19-3	1-W	T1	A1
6		U6	19-2	1-W	T1	A1
7		U95	18-1	10-5	T1	A10
8		U8	18-2	10-7	T1	A10
9		U9	18-3	10-16	T1	A10
10		U10	18-1	10-17	T1	A10
11		U4	18-2	17-2	T1	CR2
12		U92	18-3	17-2	T1	CR2
13		U94	17-2	10-H	CR2	A10
14		U2	17-2	20-3	CR2	Q1
15		U2	17-2	10-M	CR2	A10
16		U2	17-2	19-1	CR2	C3 +
17		U7	19-1	10-9	C3	A10
18		U5	20-3	10-13	Q1	A10
19		U4	20-3	10-U	Q1	A10
20		U92	16-3	10-U	C2	A10
21		MWC20(7)U0	16-3	16-2	C2	A10
22		NOT USED				
23		MWC20(7)U2	16-1	10-C	C1	A10
24		MWC20(7)U90	16-1	10-3	C1	A10
25		WI142-5 (0-2)	19-4	13-1	T1	TB1
26		MWC24(7)U97	17-1	7-21	CR1	A7
27		MWC24(7)U97	7-21	8-21	A7	A8
28		MWC24(7)U97	7-21	10-E	A8	A10
29		MWC22(7)U0	1-Y	21-4	A1	GRD AT A1
30		U0	1-21	1-1	A1	A1
31		U0	1-21	2-Y	A1	A2
32		U0	2-21	2-1	A2	A2
33		U0	2-21	3-Y	A2	A3
34		U0	3-21	3-1	A3	A3
35		U0	3-21	4-Y	A3	A4
36		U0	4-21	4-1	A4	A4
37		U0	4-21	5-Y	A4	A5
38		U0	5-21	5-1	A5	A5
39		U0	5-21	6-Y	A5	A6
40		U0	6-21	6-1	A6	A6
41		U0	6-21	7-Y	A6	A7
42		U0	7-21	7-1	A7	A7
43		U0	7-21	8-Y	A7	A8
44		U0	8-21	8-1	A8	A8
45		U0	8-21	9-Y	A8	A9
46		U0	9-21	9-1	A9	A9
47		U0	9-21	10-Y	A9	A10
48		MWC22(7)U0	10-21	10-1	A10	A10
49		NOT USED				
50		MWC20(7)U0	17-1	16-2	CR1	A10
						GRD

REQ	ITEM	PART NUMBER	BREAKOUT		DESTINATION OR DESCRIPTION	
			FROM	TO	FROM	TO
51		MWC20(7)U0	11-6	21-4	K1	A1
52		MWC20(7)U0	21-4	1-B	A1	REAR PLATE GRD J3, J4
53		MWC22(7)U6	10-K	9-3	A10	PIN 4
54		U6	9-3	8-3	A9	GRD
55		U6	8-3	7-3	A8	PIN 4
56		U6	7-3	6-3	A7	PIN 4
57		U6	6-3	5-3	A6	PIN 4
58		U6	5-3	4-3	A5	PIN 4
59		U6	4-3	3-3	A4	PIN 4
60		U6	3-3	2-3	A3	PIN 4
61		MWC22(7)U6	2-3	1-3	A2	PIN 4
62		MWC20(7)U0	10-21	16-2	A10	GRD
63		MWC22(7)U6	1-3	11-6	A1	PIN 7
64		MWC22(7)U6	10-K	12-2	A10	DS1
65		MWC20(7)U4	18-2	12-3	T1	DS2
66		MWC20(7)U92	18-3	12-3	T1	DS2
67		MWC20(7)U2	10-W	9-19	A10	PIN 20
68		U2	9-19	8-19	A9	PIN 20
69		U2	8-19	7-19	A8	PIN 20
70		U2	7-19	6-19	A7	PIN 20
71		U2	6-19	5-19	A6	PIN 20
72		U2	5-19	4-19	A5	PIN 20
73		U2	4-19	3-19	A4	PIN 20
74		MWC20(7)U2	3-19	2-19	A3	PIN 20
75		MWC26(7)U3	10-11	9-Y	A10	PIN 20
76		U3	9-Y	6-E	A9	Y
77		U3	6-E	5-11	A6	F
78		U3	5-11	4-11	A5	11
79		U3	4-11	3-5	A4	11
80		MWC26(7)U3	3-5	2-K	A3	6
81		MWC20(7)U2	2-19	10-W	A2	L
82		MWC20(7)U6	1-3	10-K	A1	X
83		MWC26(7)U1	9-A	8-E	A9	L
84		U91	9-C	6-13	A9	E
85		U3	9-C	6-7	A9	14
86		U93	9-E	6-M	A9	8
87		U4	9-H	6-W	A9	M
88		U4	6-W	2-U	A6	X
89		U94	9-H	8-7	A9	V
90		U94	8-7	7-7	A8	8
91		U5	9-K	6-W	A9	8
92		U5	6-W	2-P	A6	W
93		U95	9-M	6-P	A9	P
94		U95	6-P	5-S	A6	R
95		U95	5-S	4-S	A5	S
96		U6	9-M	5-M	A9	S
97		U6	5-M	4-U	A5	M
98		U6	4-U	3-H	A4	U
99		U96	9-P	5-W	A9	J
100		MWC26(7)U96	5-W	3-13	A5	X

REQ	ITEM	PART NUMBER	BREAKOUT		DESTINATION OR DESCRIPTION	TO
			FROM	TO		
	101	MWC26 (7) U7	9-S	8-U	PIN S	PIN U
	102		8-U	7-U	U	U
	103		7-U	5-S	U	T
	104		5-S	4-P	T	R
	105		4-P	3-K	R	L
	106		9-S	6-1	T	2
	107		9-U	15-1	U	3
	108		9-U	15-1	V	4
	109		9-W	7-5	W	5
	110		8-5	6-5	5	5
	111		6-5	5-K	5	K
	112		9-W	8-5	X	6
	113		9-P	8-W	P	X
	114		8-W	7-W	X	X
	115		7-W	5-U	X	U
	116		5-U	4-M	U	M
	117		4-M	3-H	M	H
	118		9-1	6-19	2	19
	119		6-19	3-17	19	17
	120		9-7	8-7	8	7
	121		8-7	7-7	7	7
	122		9-9	6-Y	9	Y
	123		9-17	8-Y	18	Y
	124		8-Y	7-Y	Y	Y
	125		7-Y	5-M	Y	N
	126		5-M	4-P	N	P
	127		4-P	3-9	P	10
	128		9-19	5-P	19	R
	129		5-P	4-S	R	T
	130	MWC26 (7) U4	4-S	3-A	T	B
	131	MWC24 (7) U0	8-C	7-C	C	C
	132	MWC24 (7) U0	7-C	17-1	C	CR1
	133	MWC26 (7) U95	8-D	15-1	D	5
	134		8-3	15-1	3	6
	135		8-9	15-1	9	2
	136		8-13	15-1	14	Z
	137		8-11	15-1	11	Y
	138		8-S	15-1	T	X
	139		8-9	15-1	10	W
	140		8-S	15-1	S	V
	141		8-H	15-2	J	U
	142		8-13	15-2	13	T
	143		8-U	6-M	V	N
	144		6-M	3-W	N	W
	145		8-W	7-W	W	W
	146		7-W	3-15	2	15
	147		8-1	3-S	W	15
	148		7-U	6-S	W	T
	149		6-S	3-M	2	T
	150	MWC26 (7) U90	7-E	6-H	V	T
					T	N
					J	J

REQ	ITEM	PART NUMBER	BREAKOUT		DESTINATION OR DESCRIPTION	
			FROM	TO	FROM	TO
151		MWC26 (7) U8	7-5	6-U	A7	A6
152		U98	7-1	3-P	A7	A3
153		U90	7-5	6-S	A7	A6
154		U90	6-S	4-K	A6	A4
155		U1	7-C	15-2	A7	J3
156		U91	7-3	15-2	A7	J3
157		U3	7-9	15-2	A7	J3
158		U5	7-13	15-2	A7	J3
159		U95	7-11	15-2	A7	J3
160		U6	7-S	15-2	A7	J3
161		U96	7-9	15-2	A7	J3
162		U9	7-S	15-2	A7	J3
163		U91	7-H	15-3	A7	J3
164		MWC26 (7) U1	7-13	15-3	A7	J3
165		MWC24 (7) U0	7-A	15-3	A7	J3
166		MWC24 (7) U0	8-A	15-4	A8	J3
167		MWC26 (7) U92	6-A	11-E	A6	A11
168		U90	6-C	11-W	A6	A11
169		U98	6-C	5-Y	A6	A5
170		U98	5-Y	4-Y	A5	A4
171		U98	4-Y	3-Y	A4	A3
172		U94	6-U	15-3	A6	J3
173		U93	6-3	3-E	A6	A3
174		U93	3-E	2-1	A3	A2
175		U92	6-5	3-7	A6	A3
176		U4	6-K	3-17	A6	A3
177		U6	6-21	2-W	A6	A2
178		U96	6-K	2-Y	A6	A2
179		U7	6-7	3-S	A6	A3
180		U9	6-P	15-3	A6	J3
181		U96	6-E	11-6	A6	K1
182		U1	5-P	4-M	A5	A4
183		U1	4-M	3-C	A4	A3
184		U94	5-W	4-W	A5	A4
185		U94	4-W	3-P	A4	A3
186		U1	5-1	11-5	A5	A11
187		U91	5-3	11-7	A5	A11
188		U2	5-5	11-7	A5	A11
189		U3	5-H	11-C	A5	A11
190		U93	5-H	11-C	A5	A11
191		U4	5-11	15-3	A5	J3
192		U5	5-A	15-3	A5	J3
193		U95	5-7	15-3	A5	J3
194		U96	5-5	15-3	A5	J3
195		U8	5-C	15-3	A5	J3
196		U93	4-W	3-19	A4	A3
197		U3	4-1	11-1	A4	A11
198		U93	4-3	11-1	A4	A11
199		U94	4+5	11-3	A4	A11
200		MWC26 (7) U7	4-H	11-3	A4	A11

REQ	ITEM	PART NUMBER	BREAKOUT		DESTINATION OR DESCRIPTION			
			FROM	TO	FROM	TO		
	201	MWC26 (7) U97	4-H	11-5	A4	PIN J	A11	PIN 5
	202	U4	4-11	15-4	A4	12	J3	W
	203	U5	4-A	15-4	A4	B	J3	V
	204	U95	4-7	15-4	A4	7	J3	U
	205	U96	4-5	15-4	A4	6	J3	T
	206	U8	4-C	15-4	A4	C	J3	S
	207	U1	3-U	2-21	A3	U	A2	21
	208	U91	3-3	2-A	A3	3	A2	B
	209	U2	3-5	2-P	A3	5	A2	R
	210	U92	3-1	2-M	A3	2	A2	M
	211	U3	3-21	2-S	A3	21	A2	T
	212	U93	3-K	2-S	A3	K	A2	S
	213	U4	3-E	2-H	A3	F	A2	J
	214	U94	3-U	2-M	A3	V	A2	N
	215	U5	3-M	2-K	A3	M	A2	K
	216	U94	2-H	15-4	A2	H	J3	R
	217	U94	2-3	11-6	A2	3	K1	8
	218	U90	11-6	15-4	K1	6	J3	Q
	219	U96	2-C	12-2	A2	D	DS	1
	220	U98	2-E	1-A	A2	E	A1	B
	221	U6	2-E	2-C	A2	F	A2	C
	222	U6	2-C	2-3	A2	C	A2	4
	223	U1	2-7	15-4	A2	7	J3	P
	224	MWC26 (7) U91	2-5	15-4	A2	6	J3	N
	225	WI142-5 (0-2)	1-15	14	A1	12 BLK	J4	PIN E
					A1	15 RED	J4	PIN F
					SHIELD	GRD	J4	PIN D
	226	MWC26 (7) U7	11-6	15-5	K1	2	J3	PIN M
	227	MWC26 (7) U97	11-6	15-5	K1	5	J3	PIN L
	228	MWC20 (7) U0	15-5	1-B	J3	K	GRD AT REAR PLATE	
	229	MWC20 (7) U0	15-5	1-B	J3	PIN E	GRD AT REAR PLATE	
	230	CD101-1MW			CORD, NYLON, LACING			
	231	BS100			SOLDER, TIN ALLOY			
	232	PX830-12-1			INS, SLEEVING SHRINK			
	233	LAL01			BAND, MARKER, CABLE			
	234	MS3102A-32-414S			CONNECTOR, RECEP, FML			
	235	MS3102A-20-27P			CONNECTOR, RECEP, ML			