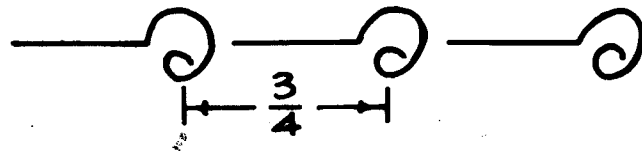
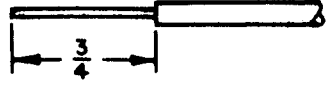


UNLESS OTHERWISE SPECIFIED
WIRES SHOULD BE PLACED IN CABLE IN NUMERICAL SEQUENCE
AS THEY APPEAR IN ITEM COLUMN BY CATEGORY.

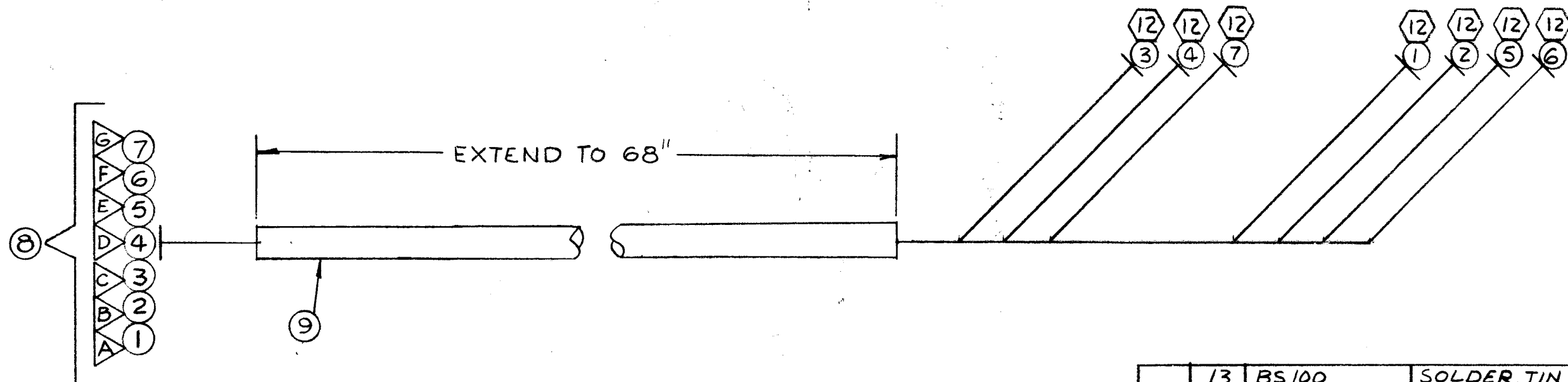
1. ALL R.F. CABLES
 2. ALL SHIELDED CABLES
 3. ALL OTHERS
- SPACE LACING APPROXIMATELY 3/4" APART.



THIS SYMBOL DENOTES END OF INSULATION
AND NAIL DRIVING POINT. WIRE MUST BE
STRIPPED 3/4" BEYOND THIS POINT AND
TINNED 1/2" UNLESS OTHERWISE SPECIFIED.

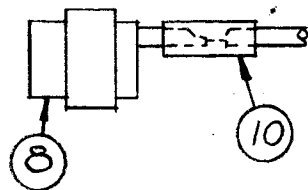


REVISIONS						
ZONE	LTR	DESCRIPTION	DATE	E.M.N.NO	DRAFT	CHKD APPD
	X	EXP. RELEASE	2.28.68	+	RG	APPD
	Ø	ORIG. RELEASE FOR PROD	2-13-69	Ø	RG	



SYMBOL - DENOTES

- = ITEM NO'S
- ▽ = PINS NO'S
- ⬡ = LUGS



REQ'D	ITEM	PART NUMBER	DESCRIPTION	SYM.
	13	BS100	SOLDER, TIN ALLOY	
7	12	TE120-2	TERM. LUG - SPADE	
	11	CD101-1MW	CORD, NYLON, LACING	
	10	PX100-1-106	INS, SLVG, ELEC.	
	9	PX100-1-234	INS, SLVG, ELEC.	
1	8	M53106A16S-1S	CONN, PL, FML.	
1	7	MWC22(7)U7	WIRE, ELEC, INS.	
1	6			
1	5			
1	4			
1	3			
1	2			
1	1	MWC22(7)U1	WIRE, ELEC, INS.	

F. BUDETTI LIST OF MATERIAL

THE TECHNICAL MATERIEL CORP.
MAMARONECK, NEW YORK

**CABLE, BRANCHED
INTERCONNECT**

SIZE	CODE IDENT. NO.	DWG NO.	ISSUE
B	82679	CA1422	Ø
SCALE	SHEET		OF

1	KIT-321	ASS'Y NO.
QTY / UNIT	MODEL USED ON	ASS'Y NO.
APPLICATION		
	CODE	S401-451
NOTICE TO PERSONS RECEIVING THIS DRAWING		
THE TECHNICAL MATERIEL CORPORATION claims proprietary right in the material disclosed hereon. This drawing is issued in confidence for engineering information only and may not be reproduced or used to manufacture anything shown hereon without permission from THE TECHNICAL MATERIEL CORPORATION to the user. This drawing is loaned for mutual assistance and is subject to recall at any time.		

UNLESS OTHERWISE SPECIFIED DIMENSIONS ARE IN INCHES AND INCLUDE CHEMICALLY APPLIED OR PLATED FINISHES	FINAL APPROVAL	DATE
DECIMALS .X ± .05 .XX ± .01 .XXX ± .005	MECH. DES.	DATE
FRACTIONS 1/64 ANGLES 0° -30'	ELECT. DES.	DATE
MATERIAL	CHECKED	DATE
FINISH	DRAWN	DATE