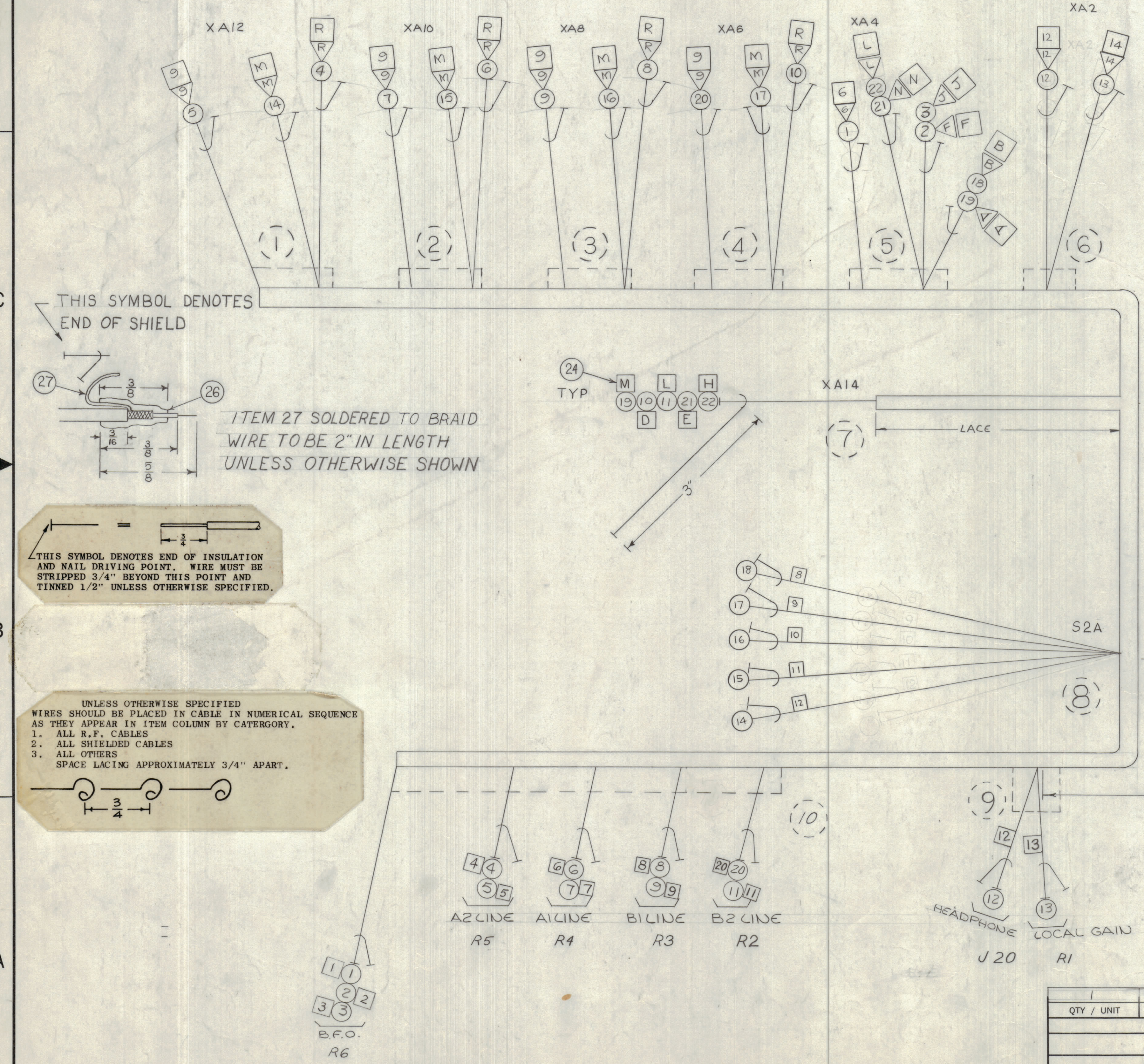
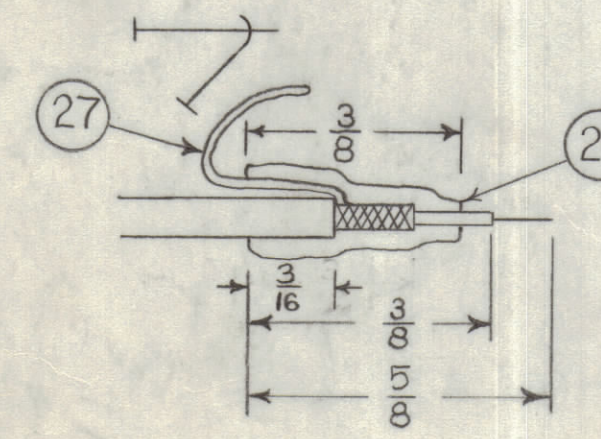


| REVISIONS | | | | | | |
|-----------|-----|---------------------------------|----------|----------|-------|-----------|
| ZONE | LTR | DESCRIPTION | DATE | E.M.N.NO | DRAFT | CHKD APPD |
| X | | EXP RELEASE | 2-1-68 | | | |
| XI | | REV & UPDATED | 1-14-69 | | | |
| | | ORIGINAL RELEASE FOR PRODUCTION | 12-2-69 | | | |
| A | | REVISED BKOUT 5, 6, 8 | 07/1/69 | 19559 | KD | |
| B | | REV ITS 2,3,4, 6, 8, 11, 12 | 11-24-69 | 19662 | KD | |



THIS SYMBOL DENOTES END OF SHIELD



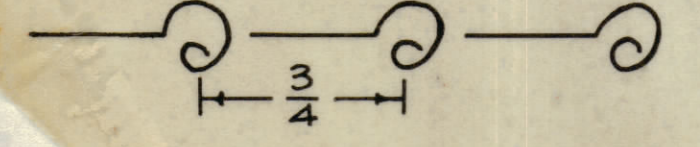
ITEM 27 SOLDERED TO BRAID WIRE TO BE 2" IN LENGTH UNLESS OTHERWISE SHOWN

THIS SYMBOL DENOTES END OF INSULATION AND NAIL DRIVING POINT. WIRE MUST BE STRIPPED 3/4" BEYOND THIS POINT AND TINNED 1/2" UNLESS OTHERWISE SPECIFIED.

UNLESS OTHERWISE SPECIFIED WIRES SHOULD BE PLACED IN CABLE IN NUMERICAL SEQUENCE AS THEY APPEAR IN ITEM COLUMN BY CATEGORY.

- ALL R.F. CABLES
- ALL SHIELDED CABLES
- ALL OTHERS

SPACE LACING APPROXIMATELY 3/4" APART.



LEGEND

- = ITEM NUMBERS
- △ = PIN NUMBERS
- = MARKERS
- (dashed) = BREAKOUTS

| FROM | TO | ITEM | PART NO. | FROM | DESCRIPTION | TO | SYMBOL |
|------|----|------|-------------|---------------|--------------------|------------------|--------|
| | | 27 | LWC 26(7)UO | | WIRE, ELEC, INS | | |
| | | 26 | PX 830-12-1 | | INS, SLVG, SHRINK | | |
| | | 25 | BS100 | | SOLDER, TIN ALLOY | | |
| | | 24 | CA101 | | MARKER, CABLE | | |
| | | 23 | CD101-1MW | | CORD, NYLON LACING | | |
| 7 | 5 | 22 | RG174/U | XA14-H | GRD | XA4-L XA4-H | |
| 7 | 5 | 21 | | XA14-E | GRD | XA4-N XA4-H | |
| 10 | 4 | 20 | | R2 WIPER | GRD | XA6-9 XA6-10 | |
| 7 | 5 | 19 | | XA14-M | GRD | XA4-A XA4-C | |
| 8 | 5 | 18 | | S2A-B | GRD | XA4-B XA4-C | |
| 8 | 4 | 17 | | S2A-9 | GRD | XA6-M XA6-N | |
| 8 | 3 | 16 | | S2A-10 | GRD | XAB-M XAB-N | |
| 8 | 2 | 15 | | S2A-11 | GRD | XA10-M XA10-N | |
| 8 | 1 | 14 | | S2A-12 | GRD | XA12-M XA12-N | |
| 9 | 6 | 13 | | R1 WIPER | GRD | XA2-14 XA2-13 | |
| 9 | 6 | 12 | | J20 | GRD | XA2-12 XA2-13 | |
| 10 | 7 | 11 | | R2-3 | GRD | XA14-L GRD | |
| 7 | 4 | 10 | | XA14-D | GRD | XA6-A XA6-P | |
| 10 | 3 | 9 | | R3 WIPER | GRD | XAB-9 XAB-10 | |
| 10 | 3 | 8 | | R3-3 | GRD | XAB-R XAB-P | |
| 10 | 2 | 7 | | R4 WIPER | GRD | XA10-9 XA10-10 | |
| 10 | 2 | 6 | | R4-3 | GRD | XA10-R XA10-P | |
| 10 | 1 | 5 | | R5 WIPER | GRD | XA4-9 XA4-10 | |
| 10 | 1 | 4 | | R5-3 | GRD | XA4-R XA4-P | |
| 10 | 5 | 3 | | R6-1 | GRD | XA4-J XA4-E | |
| 10 | 5 | 2 | | R6-3 | GRD | XA4-F XA4-5 | |
| 10 | 5 | 1 | RG174/U | R6-WIPER SHLD | GRD | XA4-6 SHLD-XA4-5 | |

DO NOT LACE

| | | | | | |
|---|-----------------|----------------|--|-------|--|
| UNLESS OTHERWISE SPECIFIED DIMENSIONS ARE IN INCHES AND INCLUDE CHEMICALLY APPLIED OR PLATED FINISHES | | FINAL APPROVAL | | DATE | |
| TOLERANCES ON | | MECH. DES. | | DATE | |
| DECIMALS | FRACTIONS | ELECT. DES. | | DATE | |
| .X ± .05 | ± 1/64 | CHECKED | | DATE | |
| .XX ± .01 | ANGLES ± 0°-30' | DRAWN | | DATE | |
| .XXX ± .005 | | | | | |
| MATERIAL | | SCALE | | SHEET | |
| FINISH | | 1:1 | | OF | |

NOTICE TO PERSONS RECEIVING THIS DRAWING

THE TECHNICAL MATERIEL CORPORATION claims proprietary right in the material disclosed hereon. This drawing is issued in confidence for engineering information only and may not be reproduced or used to manufacture anything shown hereon without permission from THE TECHNICAL MATERIEL CORPORATION to the user. This drawing is loaned for mutual assistance and is subject to recall at any time.

| | | | |
|--|-----------------|----------------------|-------|
| THE TECHNICAL MATERIEL CORP. | | MAMARONECK, NEW YORK | |
| WIRING HARNESS, BRANCHED (FRONT PANEL) | | | |
| SIZE | CODE IDENT. NO. | DWG NO. | ISSUE |
| D | 82679 | CA1415 | B |