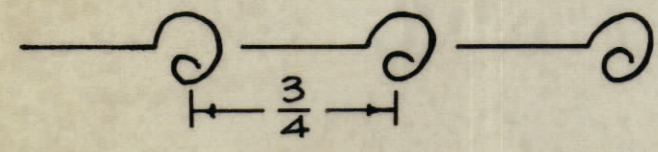


UNLESS OTHERWISE SPECIFIED WIRES SHOULD BE PLACED IN CABLE IN NUMERICAL SEQUENCE AS THEY APPEAR IN ITEM COLUMN BY CATEGORY.

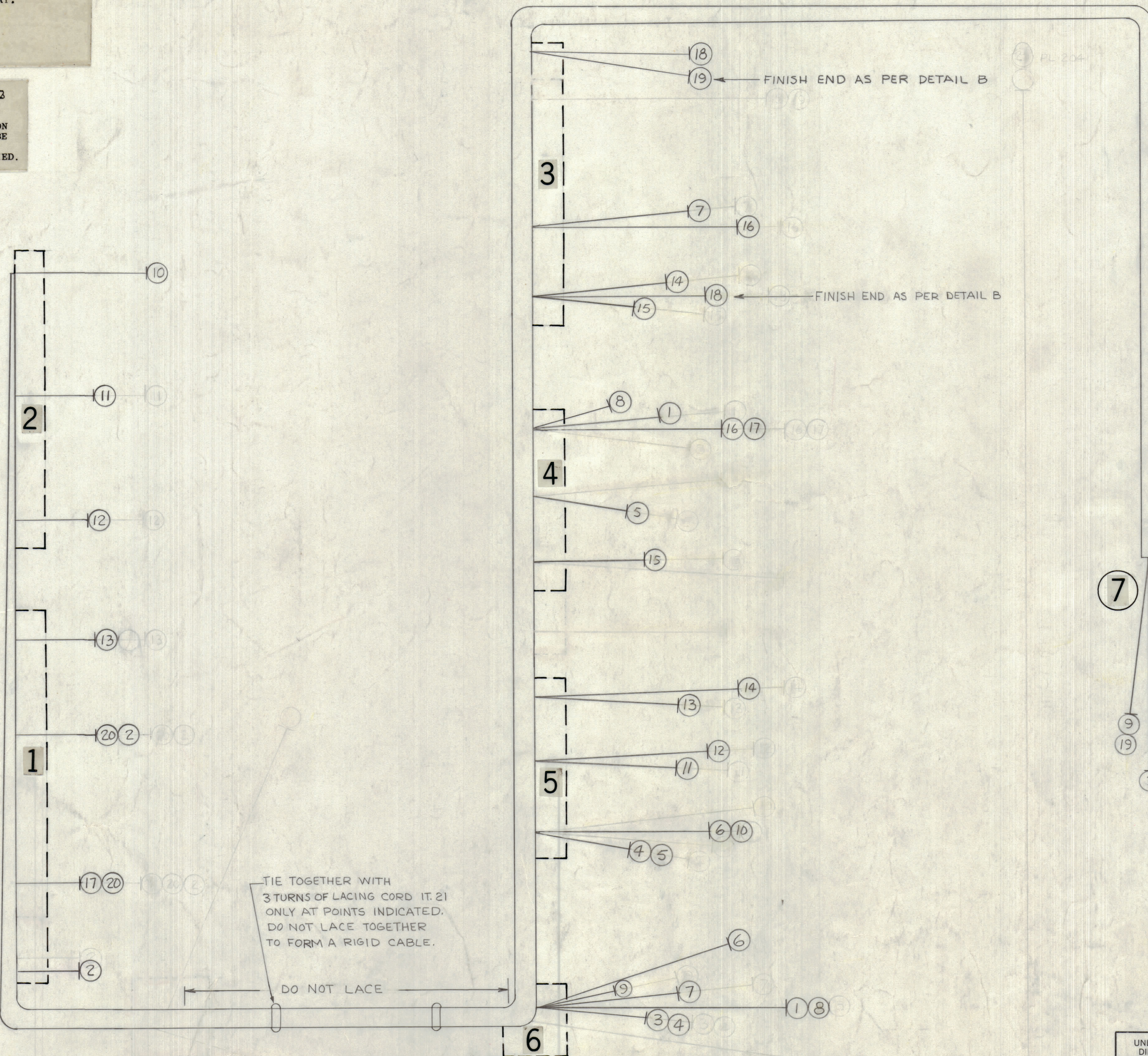
- ALL R.F. CABLES
- ALL SHIELDED CABLES
- ALL OTHERS

SPACE LACING APPROXIMATELY 3/4" APART.

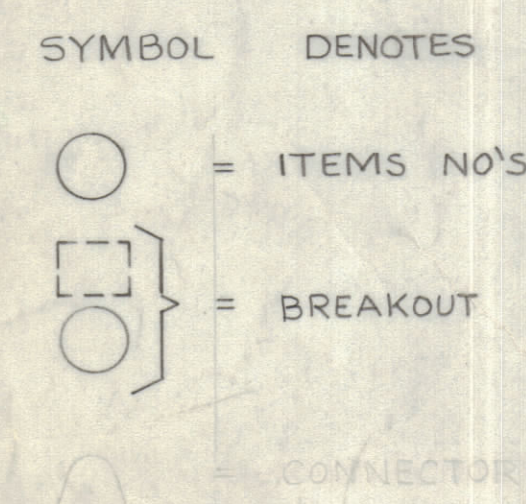


THIS SYMBOL DENOTES END OF INSULATION AND NAIL DRIVING POINT. WIRE MUST BE STRIPPED 3/4" BEYOND THIS POINT AND TINNED 1/2" UNLESS OTHERWISE SPECIFIED.

REVISIONS						
ZONE	LTR	DESCRIPTION	DATE	E.M.N.NO	DRAFT	CHKD APPD
	X	EXPERIMENTAL RELEASE	1-5-68		HZ	
		ORIGINAL RELEASE FOR PRODUCTION	4-17-69		GE	



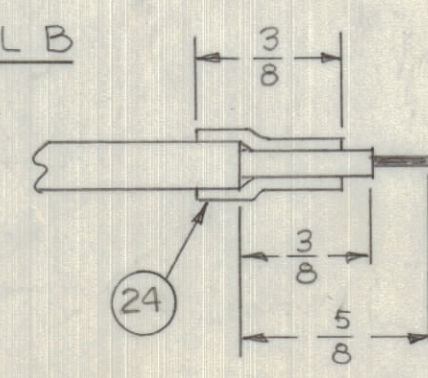
FINISH ALL ENDS AS PER DETAIL A UNLESS OTHERWISE SPECIFIED



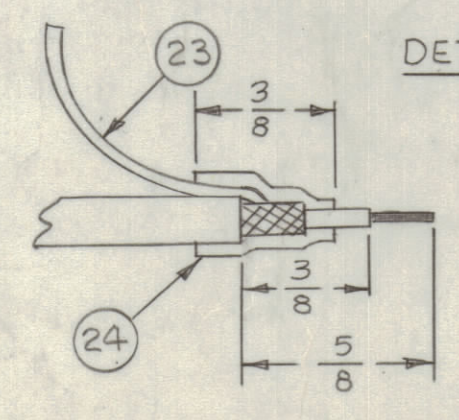
TIE TOGETHER WITH 3 TURNS OF LACING CORD IT 21 ONLY AT POINTS INDICATED. DO NOT LACE TOGETHER TO FORM A RIGID CABLE.

DO NOT LACE

DETAIL B



DETAIL A



SOLDER ITEM 23 TO BRAID

1	CHG - 4	
1	CHGR - 4	
QTY / UNIT	MODEL USED ON	ASS'Y NO.
APPLICATION		
CODE	5401-451	
NOTICE TO PERSONS RECEIVING THIS DRAWING		
THE TECHNICAL MATERIEL CORPORATION claims proprietary right in the material disclosed hereon. This drawing is issued in confidence for engineering information only and may not be reproduced or used to manufacture anything shown herein without permission from THE TECHNICAL MATERIEL CORPORATION to the user. This drawing is loaned for mutual assistance and is subject to recall at any time.		
MATERIAL		
FINISH		

FROM	TO	QTY. REQ.	ITEM	PART NO.	FROM	DESCRIPTION	TO	SYMBOL
			X 24	PX830-12-1		INS, SLVG ELEC SHRINK		
			X 23	LWC26(7)UO		WIRE ELEC INS 4-1/2 LONG		
			X 22	BS100		SOLDER, TIN ALLOY		
			X 21	CD101-1NW		CORD, NYLON LACING		
1	1	20	RG174/U		S106A FRONT CONT 1 SHD SEE CK1333		S107A FRONT CONT 2 GRD	
3	7	19			J115 PIN B		J120 CENTER SHD GRD	
3	3	18			J112 10		J115 PIN 10 SHD PIN P	
4	1	17			J110 N SHD PIN 15		S107A FRONT CONT 1 SHD GRD	
3	4	16			J110 R 15		J113 PIN R SHD PIN S	
3	4	15			J108 4 D		J112 PIN D SHD PIN E	
3	5	14			J106 13 12		J112 PIN H SHD PIN K	
5	1	13			J106 H R		S105A FRONT CONT 1 SHD SEE CK1333	
5	2	12			J105 10 L		S104A 1 1 1 1 1 1	
5	2	11			J105 H E		S103A 1 1 1 1 1 1	
5	2	10			J104 10 L		S102A FRONT CONT 1 SHD SEE CK1333	
6	7	9			J101 A B		J120 CENTER SHD GRD	
4	6	8			J101 13 12		J110 PIN 1 SHD PIN A	
3	6	7			J101 B J		J113 K 1 1 P	
5	6	6			J101 N 15		J104 K 1 1 L	
4	5	5			J104 B A		J109 A 1 1 B	
5	6	4			J101 3 B		J104 PIN B SHD PIN A	
6	7	3			J101 PIN 5 SHD PIN 7		S108 ARM	
1	1	2			S106B FRONT CONT 1		S107A FRONT CONT 5	
4	6	1	RG174/U		J101 PIN P SHD PIN R		J110 PIN F SHD PIN H	

THE TECHNICAL MATERIEL CORP.
MAMARONECK, NEW YORK

WIRING HARNESS, BRANCHED

SIZE CODE IDENT. NO. DWG NO. ISSUE
D 82679 CA1404

SCALE 1:1 SHEET OF