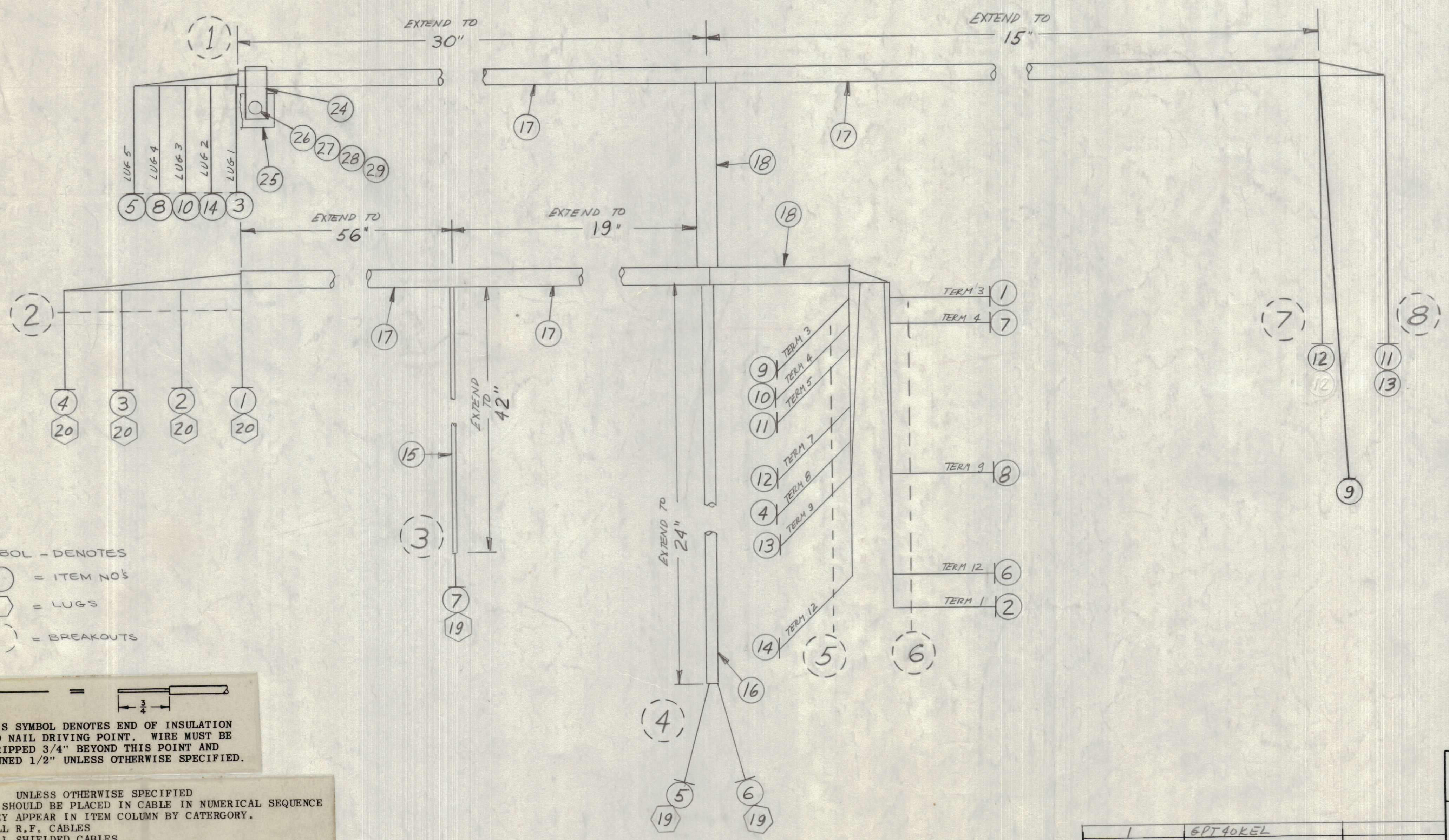


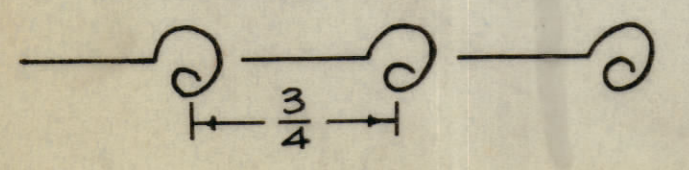
REVISIONS						
ZONE	LTR	DESCRIPTION	DATE	E.M.N.NO	DRAFT	CHKD
X		EXP. RELEASE	11-2-67			
8		ORIG. RELEASE FOR PRODUCTION	12-1-67		R.G.	



SYMBOL - DENOTES  
 ○ = ITEM NO'S  
 ⬡ = LUGS  
 ( ) = BREAKOUTS

THIS SYMBOL DENOTES END OF INSULATION AND NAIL DRIVING POINT. WIRE MUST BE STRIPPED 3/4" BEYOND THIS POINT AND TINNED 1/2" UNLESS OTHERWISE SPECIFIED.

UNLESS OTHERWISE SPECIFIED WIRES SHOULD BE PLACED IN CABLE IN NUMERICAL SEQUENCE AS THEY APPEAR IN ITEM COLUMN BY CATEGORY.  
 1. ALL R.F. CABLES  
 2. ALL SHIELDED CABLES  
 3. ALL OTHERS  
 SPACE LACING APPROXIMATELY 3/4" APART.



FROM	TO	QTY.	ITEM	PART NO.	FROM	DESCRIPTION	TO	SYMBOL
	1	29	NTH0632RN8			NUT, HEX		
	1	28	LWEOGMRN			WASH. LOCK EXT		
	1	27	FWOGBHN			WASH, FLAT		
	1	26	SCRPO632DN7			SCREW, MACH		
	1	25	TM105-5AL			TERM RD, FNG		
	1	24	CU102-3			CLP, LOOP		
X		23	BS100			SOLDER, TIN ALLOY		
X		22	TA101-1			INS, TAPE EL-GL 1/4W		
X		21	CD101-1MW			CORD, NYLON LACING		
4		20	TE156-32947			TERM LUG INS #6		
3		19	TE120-2			TERM, LUG, SPADE		
		18	PX100-1-330			INS, SLVG, BLK		
		17	PX100-1-263			INS, SLVG, BLK		
		16	PX100-1-166			INS, SLVG, BLK		
		15	PX100-1-106			INS, SLVG, BLK		
5	1	14	MWC20(7)U94			S907B-12	E901-4	LUG 2
5	8	13		96		S907B-9	S908A-3	
5	7	12		92		S907B-7	S908B-6	
5	8	11		91		S907B-5	S908A-1	
5	1	10		93		S907B-4	E901-3	LUG 3
5	7	9		2		S907B-3	E906	
6	1	8		90		S907A-9	E901-2	LUG 4
6	3	7		3		S907A-4	E1002-8	
4	6	6		9		E900-4	S907A-12	
4	1	5		8		E900-1	E901-1	LUG 5
2	5	4		4		C7134	S907B-8	
2	1	3		3		C7132	E901-5	LUG 1
2	6	2		2		C7130	S907A-1	
2	6	1	MWC20(7)U1			C7128	S907A-3	

QTY / UNIT	MODEL USED ON	ASS'Y NO.
1	6PT90KEEL	
APPLICATION		
CODE	S401-451	
MATERIAL		
FINISH		

UNLESS OTHERWISE SPECIFIED DIMENSIONS ARE IN INCHES AND INCLUDE CHEMICALLY APPLIED OR PLATED FINISHES	FINAL APPROVAL	DATE
TOLERANCES ON DECIMALS .X ± .05 .XX ± .01 .XXX ± .005	MECH. DES. <i>BD</i>	DATE 12/7/67
FRACTIONS ± 1/64 ANGLES ± 0°-30'	ELECT. DES. <i>EM</i>	DATE 12-6-67
	CHECKED <i>EM</i>	DATE 2 NOV 67
	DRAWN <i>EM</i>	

LIST OF MATERIAL			THE TECHNICAL MATERIEL CORP.	
			MAMARONECK, NEW YORK	
			WIRING HARNESS, BRANCHED	
SIZE	CODE IDENT. NO.	DWG NO.	ISSUE	
D	82679	CA 1399	Ø	
SCALE	1:1	SHEET	OF	