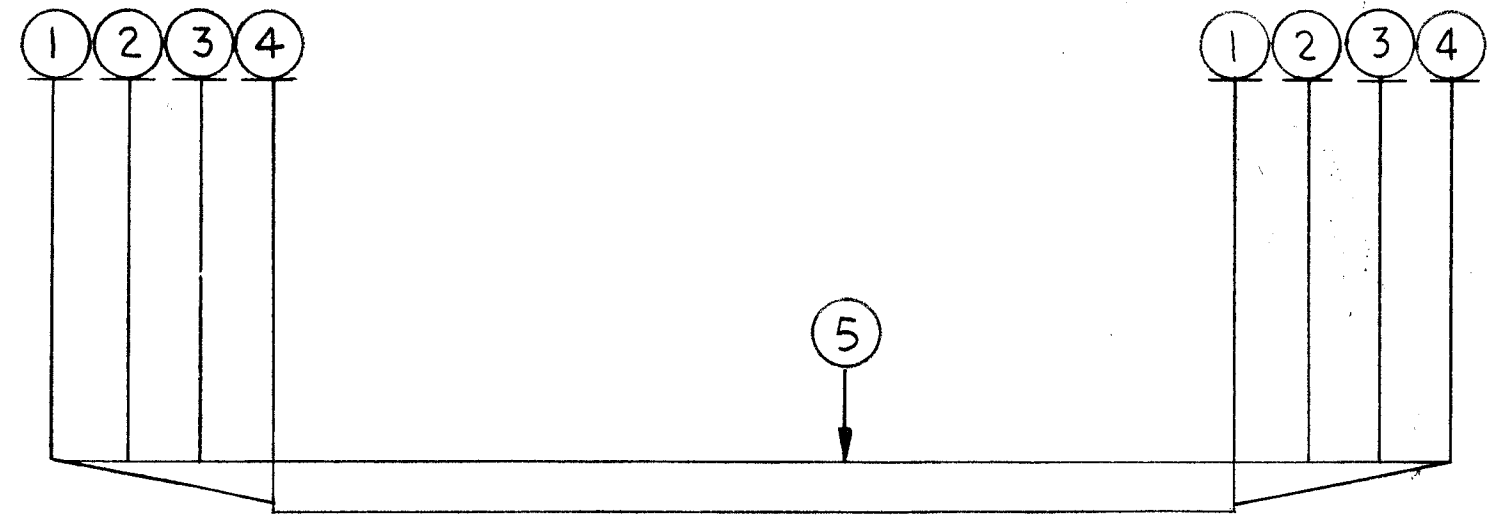


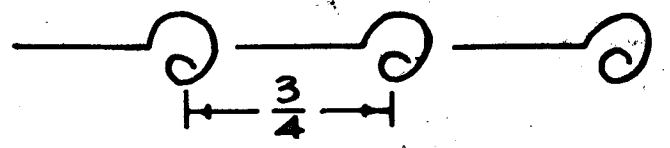
REVISIONS						
ZONE	LTR	DESCRIPTION	DATE	E.M.N.NO	DRAFT	CHKD APPD
	X	EXP. RELEASE	11-22-67	+	Hg.	<i>[Signature]</i>
	Ø	ORIG. RELEASE FOR PROD	4/15/68		R.G.	<i>[Signature]</i>



UNLESS OTHERWISE SPECIFIED
 WIRES SHOULD BE PLACED IN CABLE IN NUMERICAL SEQUENCE
 AS THEY APPEAR IN ITEM COLUMN BY CATEGORY.

1. ALL R.F. CABLES
2. ALL SHIELDED CABLES
3. ALL OTHERS

SPACE LACING APPROXIMATELY 3/4" APART.



REQ'D	ITEM	PART NUMBER	DESCRIPTION	SYM.
X	7	BS 100	SOLDER, TIN ALLOY	
X	6	CD101-1MW	CORD, NYLON, LACING	
	5	PX100-1-208	INS, SLVG, BLK	
	4	MWC 22(7)U4	WIRE, ELEC, INS	
	3	MWC 22(7)U3		
	2	MWC 22(7)U2		
	1	MWC 22(7)U1	WIRE, ELEC, INS	

F. BUDETTI LIST OF MATERIAL SK 3290-CA1004

THE TECHNICAL MATERIEL CORP.
 MAMARONECK, NEW YORK

CABLE, SPECIAL PURPOSE

SIZE	CODE IDENT. NO.	DWG NO.	ISSUE
B	82679	CA1373	Ø
SCALE	SHEET		OF

THIS SYMBOL DENOTES END OF INSULATION AND NAIL DRIVING POINT. WIRE MUST BE STRIPPED 3/4" BEYOND THIS POINT AND TINNED 1/2" UNLESS OTHERWISE SPECIFIED.

2	BCT-10KA	
QTY / UNIT	MODEL USED ON	ASS'Y NO.
	APPLICATION	
	CODE	S401-451
NOTICE TO PERSONS RECEIVING THIS DRAWING THE TECHNICAL MATERIEL CORPORATION claims proprietary right in the material disclosed hereon. This drawing is issued in confidence for engineering information only and may not be reproduced or used to manufacture anything shown hereon without permission from THE TECHNICAL MATERIEL CORPORATION to the user. This drawing is loaned for mutual assistance and is subject to recall at any time.		

UNLESS OTHERWISE SPECIFIED DIMENSIONS ARE IN INCHES AND INCLUDE CHEMICALLY APPLIED OR PLATED FINISHES	
DECIMALS	FRACTIONS
.X ± .05	1/64
.XX ± .01	TOLS. ANGLES
.XXX ± .005	0° - 30'
MATERIAL	FINISH

FINAL APPROVAL	DATE
<i>[Signature]</i>	4/15/68
MECH. DES.	DATE
<i>[Signature]</i>	4/15/68
ELECT. DES.	DATE
<i>[Signature]</i>	4/15/68
CHECKED	DATE
<i>[Signature]</i>	4/15/68
DRAWN	DATE
<i>[Signature]</i>	11-22-67