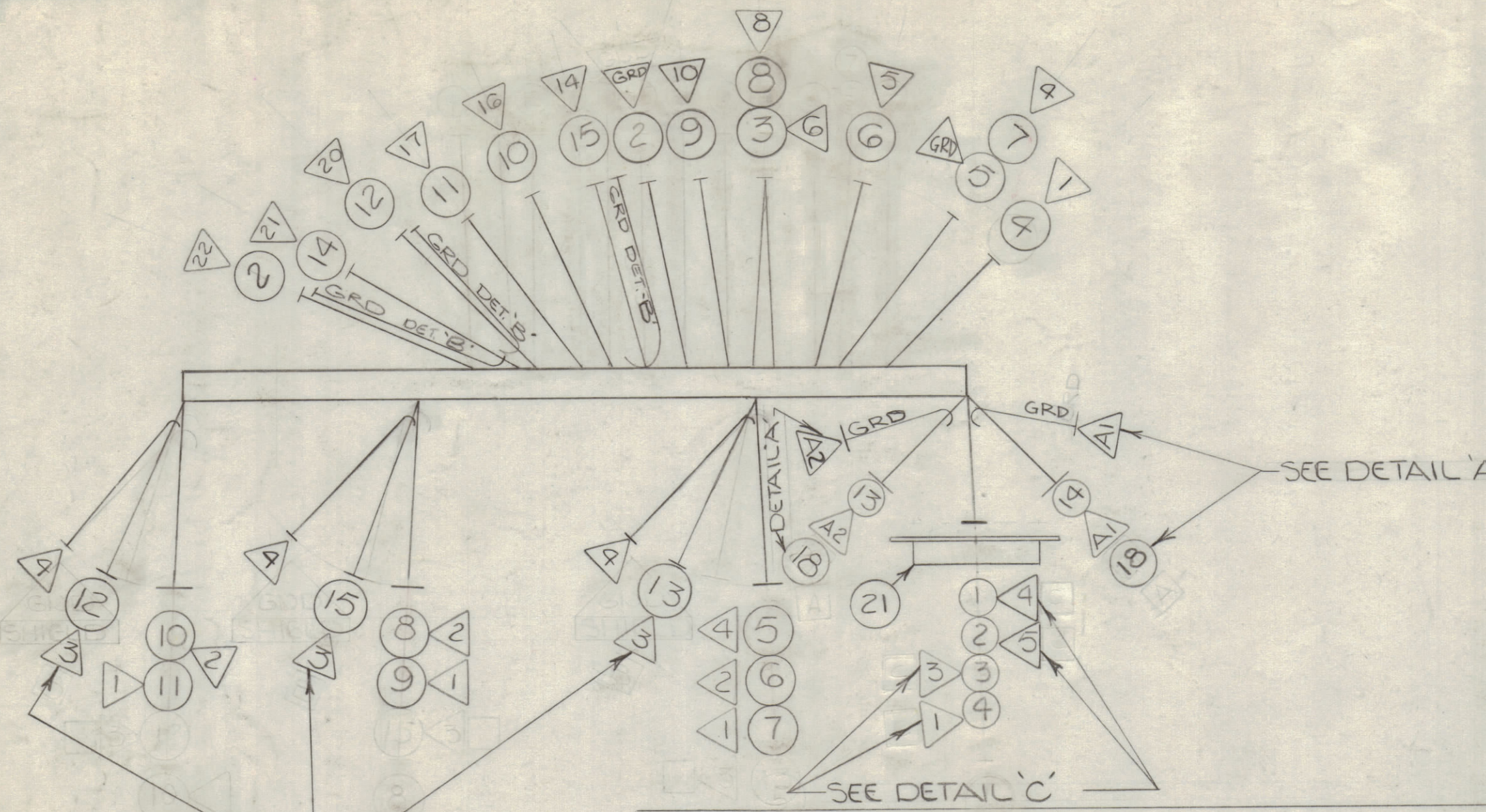
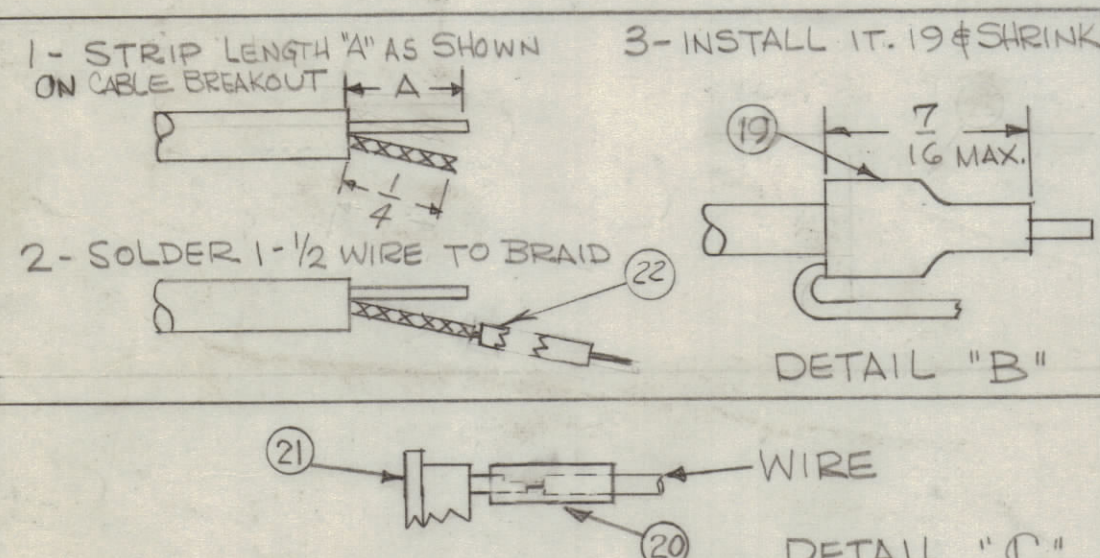


REVISIONS						
ZONE	LTR	DESCRIPTION	DATE	E.M.N.NO	DRAFT	CHKD APPD
	X	EXPERIMENTAL RELEASE	9/1/67	X	C.V.	
	X ₁	COMPLETELY REVISED	9/27/67			
	0	ORIG. RELEASE FOR PRODUCTION	11/2/67	0	RG.	
	4	IT. 23 & LA 101 NOS ADDED. ON IT. 1, 2, 3, 4, 13 LOC. REV.	11/22/68	19106	L.H.	



ASSEMBLY NOTE:

1. SLIDE OUTER RING OVER CABLE JACKET, TRIM CABLE AS SHOWN, INSERT CABLE DIELECTRIC AND CENTER CONDUCTOR INTO INSIDE DIAMETER OF INNER SLEEVE. SOLDER CENTER CONDUCTOR TO COAXIAL CENTER CONTACT.
2. SLIDE OUTER RING FORWARD UNTIL FLUSH WITH COAXIAL SHELL, CONFINING BRAID BETWEEN OUTER RING AND INNER SLEEVE. SOFT SOLDER OUTER RING TO ASSY THROUGH CROSS-DRILLED SOLDER HOLES.



UNLESS OTHERWISE SPECIFIED WIRES SHOULD BE PLACED IN CABLE IN NUMERICAL SEQUENCE AS THEY APPEAR IN ITEM COLUMN BY CATI

1. ALL R.F. CABLES
2. ALL SHIELDED CABLES
3. ALL OTHERS

SPACE LACING APPROXIMATELY APART.

THIS SYMBOL DENOTES END OF INSULATION AND NAIL DRIVING POINT. WIRE MUST BE STRIPPED 3/4" BEYOND THIS POINT AND TINNED 1/2" UNLESS OTHERWISE SPECIFIED.

SYMBOL = DENOTES

- = ITEM NUMBERS
- △ = PIN NUMBERS AND LA 101 NUMBERS

*** LEGEND**

- * P = P212, P214, P215
- * J = J207, J208, J209

UNLESS OTHERWISE SPECIFIED DIMENSIONS ARE IN INCHES AND INCLUDE CHEMICALLY APPLIED OR PLATED FINISHES

TOLERANCES ON

DECIMALS	FRACTIONS
.X ± .05	± 1/64
.XX ± .01	ANGLES
.XXX ± .005	± 0° - 30'

3	VLRC+1	A460G123
QTY / UNIT	MODEL USED ON	ASS'Y NO.
	APPLICATION	
11	CODE A	S401-451
NOTICE TO PERSONS RECEIVING THIS DRAWING		
THE TECHNICAL MATERIEL CORPORATION claims proprietary right in the material disclosed hereon. This drawing is issued in confidence for engineering information only and may not be reproduced or used to manufacture anything shown hereon without permission from THE TECHNICAL MATERIEL CORPORATION to the user. This drawing is loaned for mutual assistance and is subject to recall at any time.		

QTY.	ITEM	PART NO.	FROM	DESCRIPTION	TO	SYMBOL
	23	LA-101		BAND, MARKER, CABLE		
	22	LWC 26(7)UO		WIRE ELECT, INS		
	1	JJ321-7P		PLUG, MALE, 7PIN		
	X	PX-100-1-18		INS, SLVG, ELEC		
	X	PX830-12-1		INS, SLVG, ELEC, SHRINK		
	2	PN 120-2		PIN, CONTACT, ELEC, COAXIAL)		
	X	CD101-MW		CORD, DYLON, LACING		
	X	DS100		SOLDER, TIN ALLOY		
6 1/4	15	SHIELD		2 ND RF COIL PIN 4	JACK(*J) GRD BUSS	
		RG174		2 ND RF COIL PIN 3	JACK(*J) PIN 14	
7 1/2	14	SHIELD		PLUG(*P) A1 (GRD)	JACK(*J) GRD BUSS	
		RG174		PLUG(*P) A1	JACK(*J) PIN 21	
5 1/2	13	SHIELD		1 ST RF COIL PIN 4	A2 GRD BUSS	
		RG174		1 ST RF COIL PIN 3	PLUG(*P) A2	
7	12	SHIELD		3 RD RF COIL PIN 4	JACK(*J) GRD BUSS	
		RG174		3 RD RF COIL PIN 3	JACK(*J) PIN 20	
7 1/2	11	LWC 26(7)UG		3 RD RF COIL PIN 1	JACK(*J) PIN 17	
7 3/4	10	LWC 26(7)U3		3 RD RF COIL PIN 2	JACK(*J) PIN 16	
6 3/4	9	LWC 26(7)U8		2 ND RF COIL PIN 1	JACK(*J) PIN 10	
6 3/4	8	LWC 26(7)U5		2 ND RF COIL PIN 2	JACK(*J) PIN 8	
4 3/4	7	LWC 26(7)U9		1 ST RF COIL PIN 1	JACK(*J) PIN 4	
4 3/4	6	LWC 26(7)U4		1 ST RF COIL PIN 2	JACK(*J) PIN 5	
4 3/4	5	LWC 26(7)U0		1 ST RF COIL PIN 4	JACK(*J) GRD BUSS	
4	4	LWC 26(7)U52		PLUG(*P) PIN 1	JACK(*J) PIN 1	
5 1/4	3	LWC 26(7)U53		PLUG(*P) PIN 3	JACK(*J) PIN 6	
6	2	LWC 26(7)U50		PLUG(*P) PIN 5	JACK(*J) GRD BUSS	
7 1/2	1	LWC 26(7)U58		PLUG(*P) PIN 4	JACK(*J) PIN 22	

MARTINENGO LIST OF MATERIAL						
FINAL APPROVAL	DATE					
	11/20/67	THE TECHNICAL MATERIEL CORP.				
MECH. DES.		MAMARONECK, NEW YORK				
ELECT. DES.		WIRING HARNESS,				
CHECKED		BRANCHED (BAND 1.2.3)				
DRAWN						
SIZE	CODE IDENT. NO.	DWG NO.	ISSUE			
C	82679	CA1371	A			
SCALE	1:1	SHEET	OF			