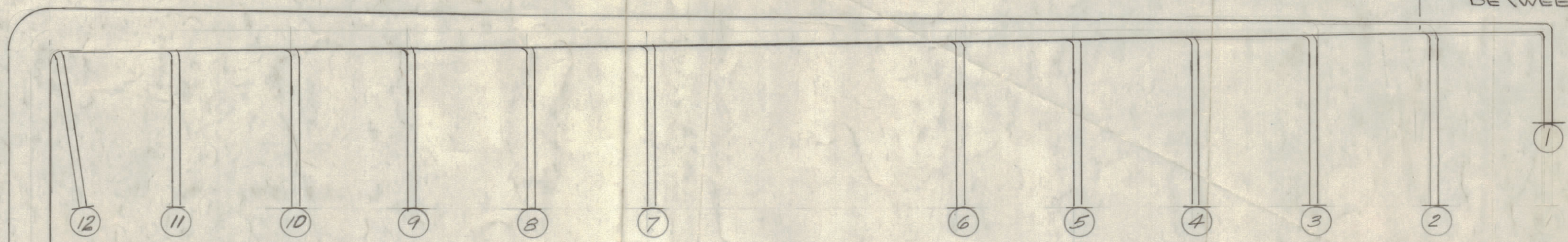


REVISIONS						
ZONE	LTR	DESCRIPTION	DATE	E.M.N.NO	DRAFT	CHKD APPD
	X	EXP RELEASE	8/17/67	X	C.V.	
	Ø	ORIGINAL RELEASE FOR PROD.	8-22-67	Ø	RG	
	A	IT. (5) WAS PX380, IT. 1 & 2 SHORTENED	4/15/68	18864	H.S.	OP
	B	REV. & UPDATED	5/21/68	18933	H.S.	OP
	C	LOC. IT. 4, 5, 10 & 11 REVISED	11/5/69	19644	C.H.	OP

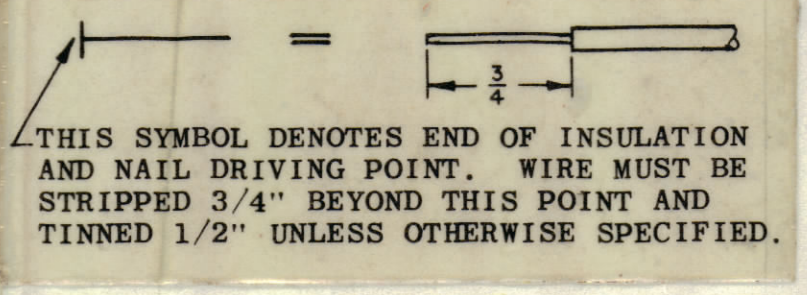
A → (16) LACE TOGETHER BETWEEN POINTS "A-A"



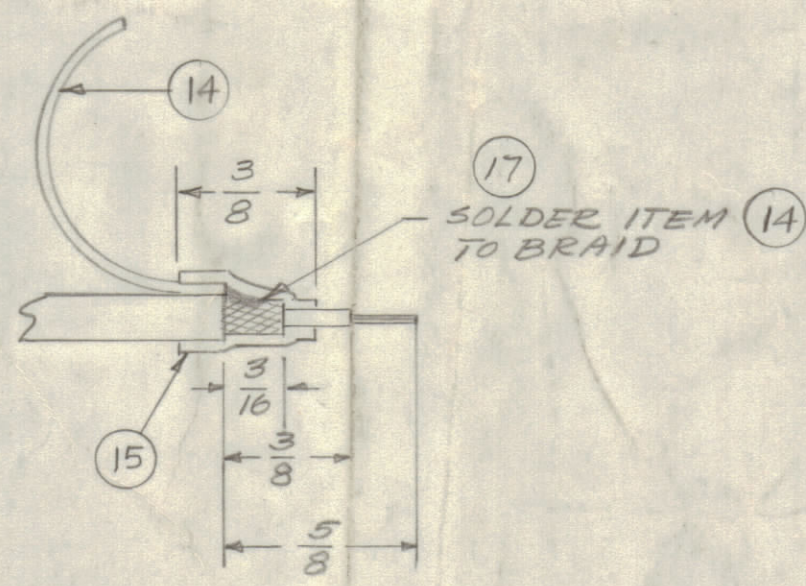
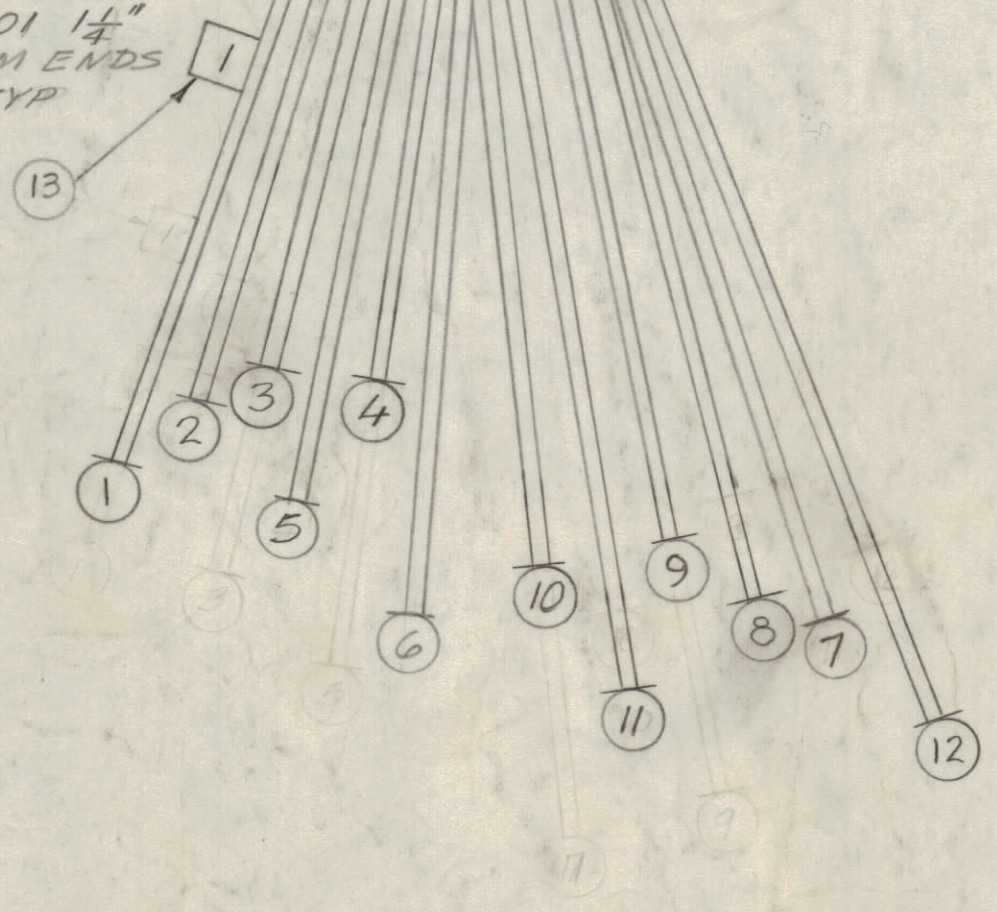
UNLESS OTHERWISE SPECIFIED WIRES SHOULD BE PLACED IN CABLE IN NUMERICAL SEQUENCE AS THEY APPEAR IN ITEM COLUMN BY CATEGORY.

1. ALL R.F. CABLES
2. ALL SHIELDED CABLES
3. ALL OTHERS

SPACE LACING APPROXIMATELY 3/4" APART.



NOTE: USE LABELS LA101 1/4" FROM ENDS TYP



FINISH ALL ENDS AS SHOWN

SYMBOL - DENOTES
 ○ = ITEM NO'S
 □ = TAGS

QTY. REQ.	ITEM	PART NO.	FROM DESCRIPTION	TO	SYMBOL
X	17	BS100	SOLDER, TIN ALLOY		
X	16	CD101-1MW	CORD, NYLON LACING		
24	15	PX830-12-1	INS, SLVG, ELEC SHRINK TYPE		
24	14	LWC26(7)UO	WIRE 3" EACH		
12	13	LA101	LABEL #1 THRU #12		
1	12	RG174/U	CABLE, RF	TB102 R129 & R130	J103 PINS S-15
1	11			R132 - R136	R-14
1	10			R138 - R142	J-8
1	9			R144 - R148	F-6
1	8			R150 - R154	L-10
1	7			TB102 R156 - R160	J103 4-D
1	6			TB101 R161 & R162	J102 S-15
1	5			R164 - R168	R-14
1	4			R170 - R174	J-8
1	3			R176 - R180	F-6
1	2			R182 - R186	L-10
1	1	RG174/U	CABLE, RF	TB101 R188 - R192	J102 PINS 4-D

O. POSE		LIST OF MATERIAL	
FINAL APPROVAL	DATE	THE TECHNICAL MATERIEL CORP.	
MECH. DES.	DATE	MAMARONECK, NEW YORK	
ELECT. DES.	DATE	R.F. CABLE ASS'Y.	
CHECKED	DATE	SIZE	CODE IDENT. NO. DWG NO.
DRAWN	DATE	C	82679 CA 1365
		SCALE	SHEET 1 OF 1

QTY / UNIT	MODEL USED ON	ASS'Y NO.
1	MMX-()	
APPLICATION		
CODE	S401-451	
A		
NOTICE TO PERSONS RECEIVING THIS DRAWING		
THE TECHNICAL MATERIEL CORPORATION claims proprietary right in the material disclosed hereon. This drawing is issued in confidence for engineering information only and may not be reproduced or used to manufacture anything shown hereon without permission from THE TECHNICAL MATERIEL CORPORATION to the user. This drawing is loaned for mutual assistance and is subject to recall at any time.		