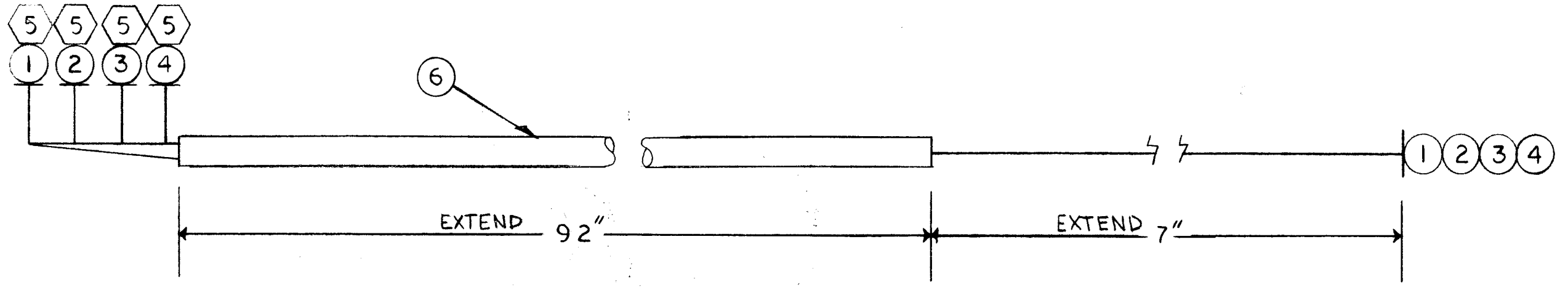


REVISIONS						
ZONE	LTR	DESCRIPTION	DATE	E.M.N.NO	DRAFT	CHKD APPD
	X	EXP. RELEASE	9/1/67		H.G.	
	Ø	ORIG. RELEASE FOR PROD	11/29/67	Ø	R.G.	

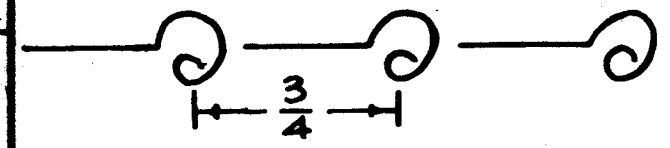


SYM. - DENOTES
 ○ = ITEM NO'S
 ⬡ = LUGS

UNLESS OTHERWISE SPECIFIED WIRES SHOULD BE PLACED IN CABLE IN NUMERICAL SEQUENCE AS THEY APPEAR IN ITEM COLUMN BY CATEGORY.

- ALL R.F. CABLES
- ALL SHIELDED CABLES
- ALL OTHERS

SPACE LACING APPROXIMATELY 3/4" APART.



THIS SYMBOL DENOTES END OF INSULATION AND NAIL DRIVING POINT. WIRE MUST BE STRIPPED 3/4" BEYOND THIS POINT AND TINNED 1/2" UNLESS OTHERWISE SPECIFIED.

1	RAK-75-4	
QTY / UNIT	MODEL USED ON	ASS'Y NO.
	APPLICATION	
	CODE A	S401-451

NOTICE TO PERSONS RECEIVING THIS DRAWING
 THE TECHNICAL MATERIEL CORPORATION claims proprietary right in the material disclosed hereon. This drawing is issued in confidence for engineering information only and may not be reproduced or used to manufacture anything shown hereon without permission from THE TECHNICAL MATERIEL CORPORATION to the user. This drawing is loaned for mutual assistance and is subject to recall at any time.

X	8	BS100	SOLDER, TIN ALLOY	
X	7	CD101-MMW	CORD, NYLON, LACING	
92"	6	PX100-208	INS. SLVG, ELEC.	
4	5	TE120-2	TERM. LUG- SPADE	
	4	MWC20(7)U0	WIRE, ELEC, INS.	
	3		91	
	2		90	
	1	MWC20(7)U92	WIRE, ELEC, INS.	
REQ'D	ITEM	PART NUMBER	DESCRIPTION	SYM.

M. STURMER LIST OF MATERIAL CA-111214-2

FINAL APPROVAL *[Signature]* DATE 11/29/67

MECH. DES. DATE

ELECT. DES. *[Signature]* DATE 11/21/67

CHECKED *[Signature]* DATE 11-22-67

DRAWN H.G. DATE 9/1/67

THE TECHNICAL MATERIEL CORP.
 MAMARONECK, NEW YORK

CABLE, BRANCHED

SIZE B	CODE IDENT. NO. 82679	DWG NO. CA1352	ISSUE Ø
SCALE 1:1	SHEET 11/29/67		OF