

5

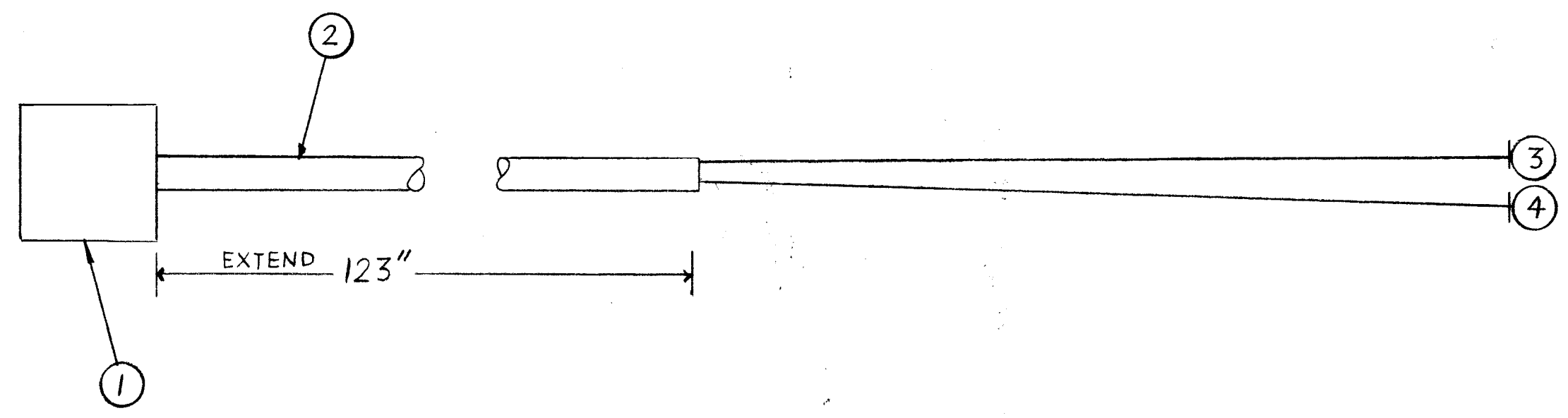
4

3

2

1

REVISIONS						
ZONE	LTR	DESCRIPTION	DATE	E.M.N.NO	DRAFT	CHKD APPD
	X	EXP. RELEASE	9/1/67		H.G.	<i>[Signature]</i>
	Ø	ORIG. RELEASE FOR PROD	11-29-67	Ø	R.G.	<i>[Signature]</i>



REQ'D	ITEM	PART NUMBER	DESCRIPTION	SYM.
X	5	BS100	SOLDER, TIN ALLOY	
	4	MWC22(7)U4	WIRE, ELEC, INS	
	3	MWC22(7)U2	WIRE, ELEC, INS	
X	2	PX100-1-287	INS. SLVG, ELEC.	
1	1	PL105-4	CONN, PL, ML	

M. STURMER LIST OF MATERIAL CA-J11214-24

FINAL APPROVAL *[Signature]* DATE 11/29/67

MECH. DES. DATE

ELECT. DES. *[Signature]* DATE 11/21/67

CHECKED *[Signature]* DATE 11-29-67

DRAWN H.G. DATE 9/1/67

THE TECHNICAL MATERIEL CORP.
MAMARONECK, NEW YORK

CABLE, SPECIAL PURPOSE

SIZE	CODE IDENT. NO.	DWG NO.	ISSUE
B	82679	CA1351	Ø

SCALE 1:1 *[Signature]* SHEET OF

1	RAK-75-4	ASS'Y NO.
QTY / UNIT	MODEL USED ON	ASS'Y NO.
APPLICATION		
CODE	S401-451	
NOTICE TO PERSONS RECEIVING THIS DRAWING		
THE TECHNICAL MATERIEL CORPORATION claims proprietary right in the material disclosed hereon. This drawing is issued in confidence for engineering information only and may not be reproduced or used to manufacture anything shown hereon without permission from THE TECHNICAL MATERIEL CORPORATION to the user. This drawing is loaned for mutual assistance and is subject to recall at any time.		

THIS SYMBOL DENOTES END OF INSULATION AND NAIL DRIVING POINT. WIRE MUST BE STRIPPED 3/4" BEYOND THIS POINT AND TINNED 1/2" UNLESS OTHERWISE SPECIFIED.