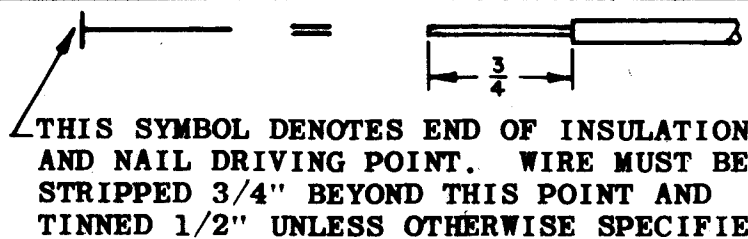
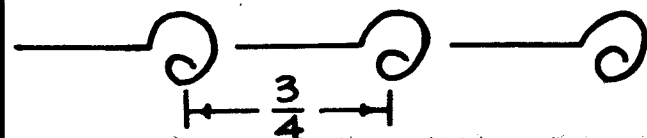
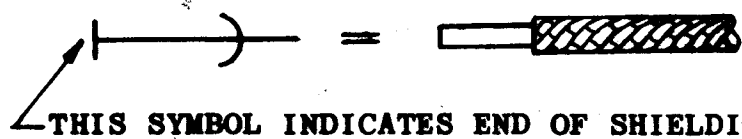


UNLESS OTHERWISE SPECIFIED
WIRES SHOULD BE PLACED IN CABLE IN NUMERICAL SEQUENCE
AS THEY APPEAR IN ITEM COLUMN BY CATEGORY.

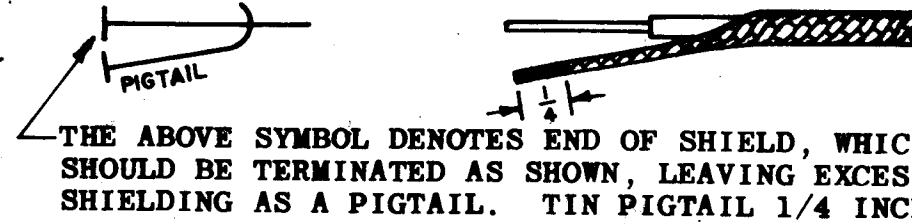
1. ALL R.F. CABLES
 2. ALL SHIELDED CABLES
 3. ALL OTHERS
- SPACE LACING APPROXIMATELY 3/4" APART.



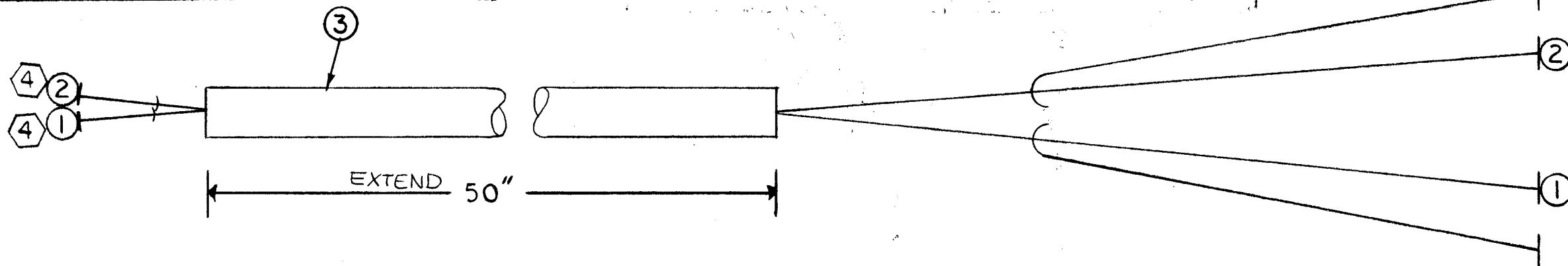
THIS SYMBOL DENOTES END OF INSULATION
AND NAIL DRIVING POINT. WIRE MUST BE
STRIPPED 3/4" BEYOND THIS POINT AND
TINNED 1/2" UNLESS OTHERWISE SPECIFIED.



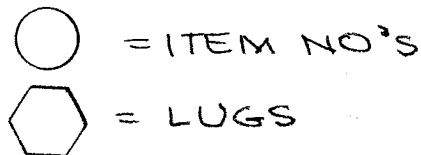
THIS SYMBOL INDICATES END OF SHIELDING.



THE ABOVE SYMBOL DENOTES END OF SHIELD, WHICH
SHOULD BE TERMINATED AS SHOWN, LEAVING EXCESS
SHIELDING AS A PIGTAIL. TIN PIGTAIL 1/4 INCH.



SYMBOL - DENOTES



REVISIONS							
ZONE	LTR	DESCRIPTION	DATE	E.M.N.NO	DRAFT	CHKD	APPD
	X	EXP. RELEASE	9/1/67		H.G.		
	Ø	ORIG. RELEASE FOR PROD.	11-29-67	Ø	R.G.		

REQ'D	ITEM	PART NUMBER	DESCRIPTION	SYM.
X	6	BS100	SOLDER, TIN ALLOY	
X	5	PX830-16-1	INS, SLVG, SHRINK	
2	4	TE120-2	TERM, LUG, SPADE	
X	3	PX100-1-186	INS, SLVG, ELEC.	
	2	MWC22(7)SJ96	CBL, SP, SHLD/ØKTB	
	1	MWC22(7)SJ95	CBL, SP, SHLD/ØKTB	

M. STURMER LIST OF MATERIAL CA-11214-7

FINAL APPROVAL <i>[Signature]</i> DATE 11/21/67		THE TECHNICAL MATERIEL CORP. MAMARONECK, NEW YORK	
MECH. DES. <i>[Signature]</i> DATE 11-21-67		CABLE, SPECIAL PURPOSE	
ELECT. DES. <i>[Signature]</i> DATE 11-22-67		SIZE B	CODE IDENT. NO. 82679
CHECKED <i>[Signature]</i> DATE 11-22-67		DWG NO. CA 1350	ISSUE Ø
DRAWN H.G. DATE 9/1/67		SCALE 1:1	SHEET OF

1	RAK-75-4	ASS'Y NO.
QTY / UNIT	MODEL USED ON	ASS'Y NO.
APPLICATION		
	CODE A	S401-451

NOTICE TO PERSONS RECEIVING THIS DRAWING
THE TECHNICAL MATERIEL CORPORATION claims proprietary right in the material disclosed hereon. This drawing is issued in confidence for engineering information only and may not be reproduced or used to manufacture anything shown hereon without permission from THE TECHNICAL MATERIEL CORPORATION to the user. This drawing is loaned for mutual assistance and is subject to recall at any time.

UNLESS OTHERWISE SPECIFIED DIMENSIONS ARE IN INCHES AND INCLUDE CHEMICALLY APPLIED OR PLATED FINISHES	
DECIMALS .X ± .05 .XX ± .01 .XXX ± .005	FRACTIONS 1/64 ANGLES 0° .30'
MATERIAL	
FINISH	