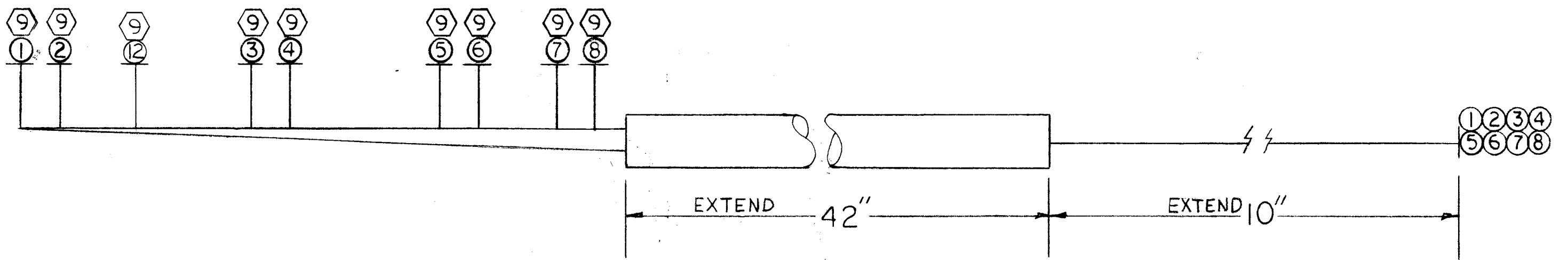
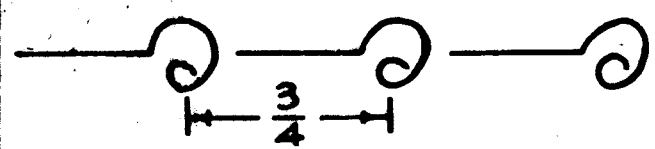


REVISIONS						
ZONE	LTR	DESCRIPTION	DATE	E.M.N.NO	DRAFT	CHKD APPD
	X	EXP. RELEASE	9/1/67		H.G.	<i>[Signature]</i>
	Ø	ORIG. RELEASE FOR PROD.	11-29-67	Ø	R.G.	<i>[Signature]</i>



SYM. - DENOTES
 ○ = ITEM NO'S
 ⬡ = LUGS

UNLESS OTHERWISE SPECIFIED
 WIRES SHOULD BE PLACED IN CABLE IN NUMERICAL SEQUENCE
 AS THEY APPEAR IN ITEM COLUMN BY CATEGORY.
 1. ALL R.F. CABLES
 2. ALL SHIELDED CABLES
 3. ALL OTHERS
 SPACE LACING APPROXIMATELY 3/4" APART.



X	13	BS 100	SOLDER, TIN ALLOY	
X	12	MWC20(7)U95	WIRE, ELEC, INS	
X	11	CD101-1MW	CORD, NYLON, LACING	
42"	10	PX100-1-.294	INS. SLVG, ELEC.	
9	9	TE120-2	TERM., LUG - SPADE	
X	8	MWC20(7)U 1	WIRE, ELEC, INS	
X	7		0	
X	6		91	
X	5		92	
X	4		4	
X	3		0	
X	2		93	
X	1	MWC20(7)U94	WIRE, ELEC, INS	
REQ'D ITEM	PART NUMBER	DESCRIPTION		SYM.

M. STURMER LIST OF MATERIAL CA-J11214-3

THE TECHNICAL MATERIEL CORP.
 MAMARONECK, NEW YORK

CABLE, BRANCHED

SIZE	CODE IDENT. NO.	DWG NO.	ISSUE
B	82679	CA 1348	Ø
SCALE	SHEET		OF
1:1	1		1

THIS SYMBOL DENOTES END OF INSULATION
 AND NAIL DRIVING POINT. WIRE MUST BE
 STRIPPED 3/4" BEYOND THIS POINT AND
 TINNED 1/2" UNLESS OTHERWISE SPECIFIED.

1	RAK-75-4	
QTY / UNIT	MODEL USED ON	ASS'Y NO.
	APPLICATION	
	CODE	S401-451
	A	

NOTICE TO PERSONS RECEIVING THIS DRAWING
 THE TECHNICAL MATERIEL CORPORATION claims proprietary right in the material
 disclosed hereon. This drawing is issued in confidence for engineering information only
 and may not be reproduced or used to manufacture anything shown hereon without
 permission from THE TECHNICAL MATERIEL CORPORATION to the user. This drawing is
 loaned for mutual assistance and is subject to recall at any time.

UNLESS OTHERWISE SPECIFIED
 DIMENSIONS ARE IN INCHES
 AND INCLUDE CHEMICALLY APPLIED
 OR PLATED FINISHES

DECIMALS	FRACTIONS	ELECT. DES.	DATE
.X ± .05	1/64		11/29/67
.XX ± .01	TOLS. ANGLES	CHECKED	DATE
.XXX ± .005	0° - 30'		11-22-67
MATERIAL	FINISH	DRAWN	DATE
		H.G.	9/1/67