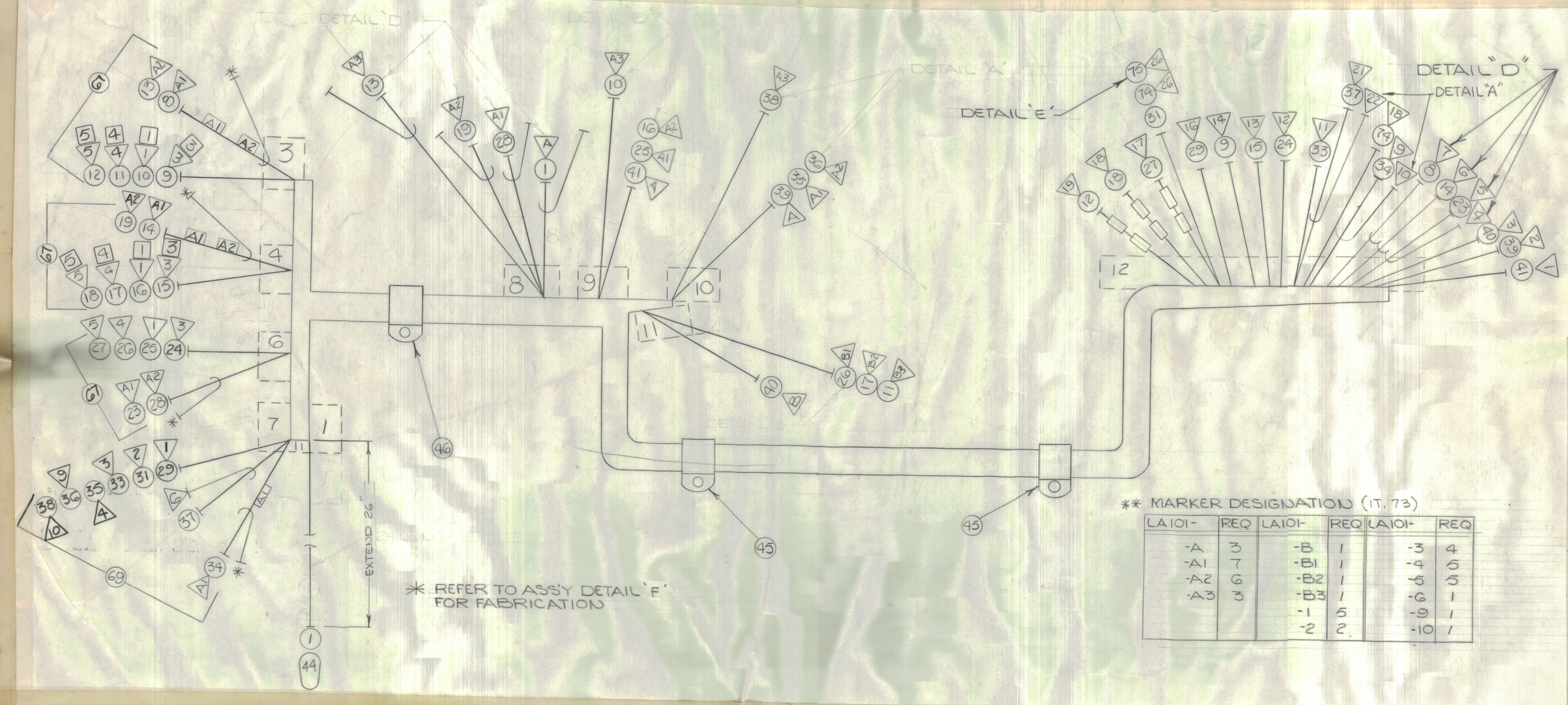


REVISIONS		DATE	E.M.N. NO.	DRAFT	CHKD.	APPD.
X	EXP. RELEASE	12/6/61				
X2	COMPLETELY REVISED	1/3/61				
	ORIGINAL RELEASE FOR PRODUCTION	1/27/61				



**\*\* MARKER DESIGNATION (IT. 73)**

LA101-	REQ	LA101-	REQ	LA101-	REQ
-A	3	-B	1	-3	4
-A1	7	-B1	1	-4	5
-A2	6	-B2	1	-5	5
-A3	3	-B3	1	-6	1
		-1	5	-9	1
		-2	2	-10	1

QTY	SYM	DESCRIPTION	DATE	E.M.N. NO.	DRAFT	CHKD.	APPD.
12	12	X 76 MNC22(7)U0					
		1 75 PI242-1					
		7 74 LWC26(7)U52					
		41 73 LA101					
		X 72 BS100					
		X 71 CD101-MW					
		7 70 PN120-1					
		1 69 JJ321-11SF					
		68 NOT USED					
		3 67 JJ321-75F					
		8 66 PX850-12-1					
		1 65 PX100-9-053					
		1 64 -8-063					
		1 63 -7-063					
		1 62 -6-063					
		1 61 -5-063					
		1 60 -2-063					
		1 59 -1-063					
		1 58 -0-063					
		3 57 -0-042					
		1 56 -9-042					
		1 55 -8-042					
		1 54 -7-042					
		1 53 -6-042					
		1 52 -5-042					
		1 51 -4-042					
		1 50 -3-042					
		1 49 -2-042					
		1 48 -1-042					
		4 47 PX100-1-500					
		1 46 CU102-7					
		2 45 CU102-4					
		1 44 PL244-1					
		6 43 CU159					
		23 42 PL242-2					
		9 41 LWC26(7)U52					
		11 40 S105C-PIN A					
		12 20 41 U58					
		10 22 39 U57					
		7 10 11 38 LWC26(7)U51					
		7 12 24 37 RG174/U					
		7 10 12 36 LWC26(7)U59					
		7 10 11 35 LWC26(7)U54					
		7 12 29 34 RG174/U					
		7 12 28 33 LWC26(7)U53					
		7 12 24 32 LWC26(7)U52					
		7 12 24 31 LWC26(7)U50					
		6 5 9 28 LWC26(7)U50					
		6 12 23 27 LWC26(7)U50					
		6 11 10 26 LWC26(7)U58					
		6 9 9 25 LWC26(7)U52					
		6 12 23 24 LWC26(7)U53					
		6 12 24 23 RG174/U					
		22 NOT USED					
		21 NOT USED					
		20 NOT USED					
		4 18 9 19 RG174/U					
		4 12 21 18 LWC26(7)U50					
		4 11 17 LWC26(7)U58					
		4 9 16 LWC26(7)U52					
		4 12 22 15 LWC26(7)U53					
		4 12 23 14 RG174/U					
		3 9 13 RG174/U					
		3 11 12 LWC26(7)U50					
		3 11 10 11 LWC26(7)U58					
		3 9 10 10 LWC26(7)U52					
		3 13 22 9 LWC26(7)U53					
		3 12 24 8 RG174/U					
		7 NOT USED					
		6 NOT USED					
		5 NOT USED					
		4 NOT USED					
		3 NOT USED					
		2 NOT USED					
		32 1 RG174/U					
		1 S105D-A					
		P2					

**~ SYMBOL NOTES ~**

- DENOTES MARKERS
- DENOTES ITEM NOS.
- ⊖ DENOTES CONNECTOR
- ▽ DENOTES PIN NOS.
- ⊞ DENOTES BREAKOUT POINTS

**B** THE ABOVE SYMBOL DENOTES END OF SHIELD, WHICH SHOULD BE TERMINATED AS SHOWN, LEAVING EXCESS SHIELDING AS A PIGTAIL. TIN PIGTAIL 1/4 INCH.

**C** THIS SYMBOL DENOTES END OF INSULATION AND NAIL DRIVING POINT. WIRE MUST BE STRIPPED 3/4" BEYOND THIS POINT AND TINNED 1/2" UNLESS OTHERWISE SPECIFIED.

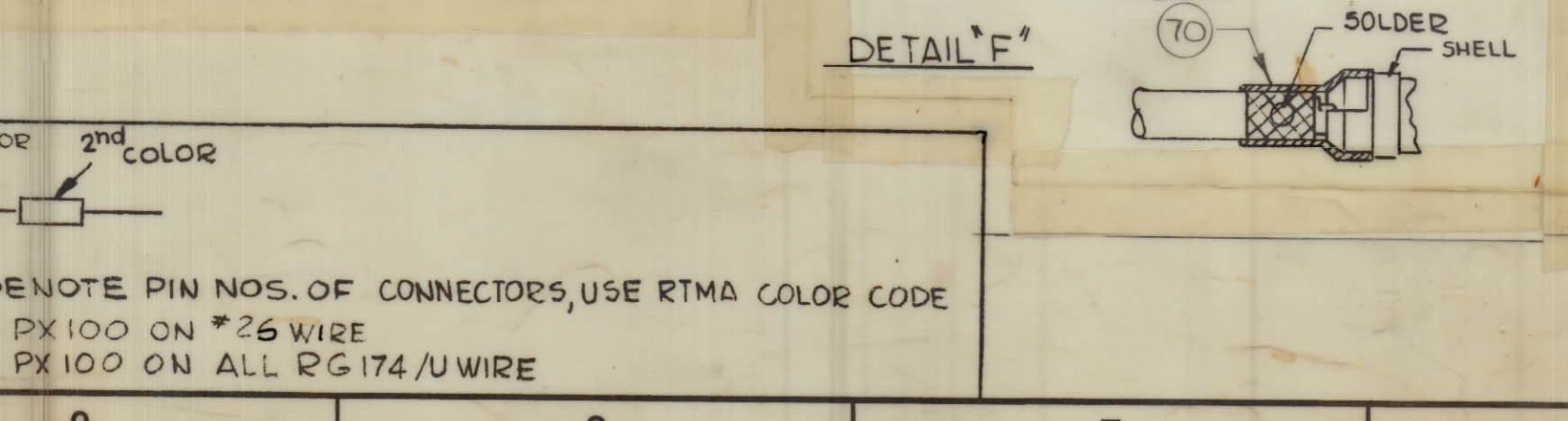
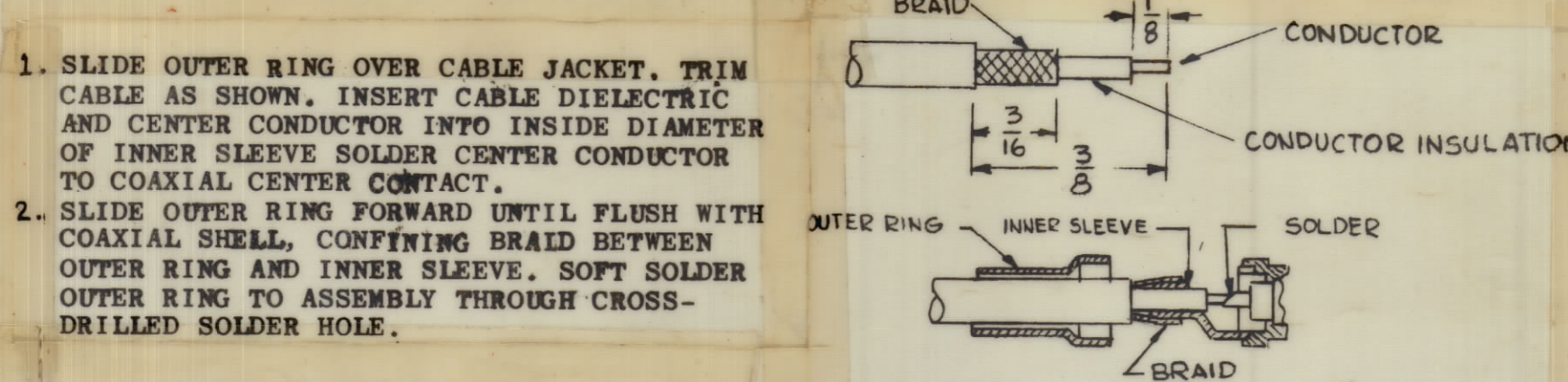
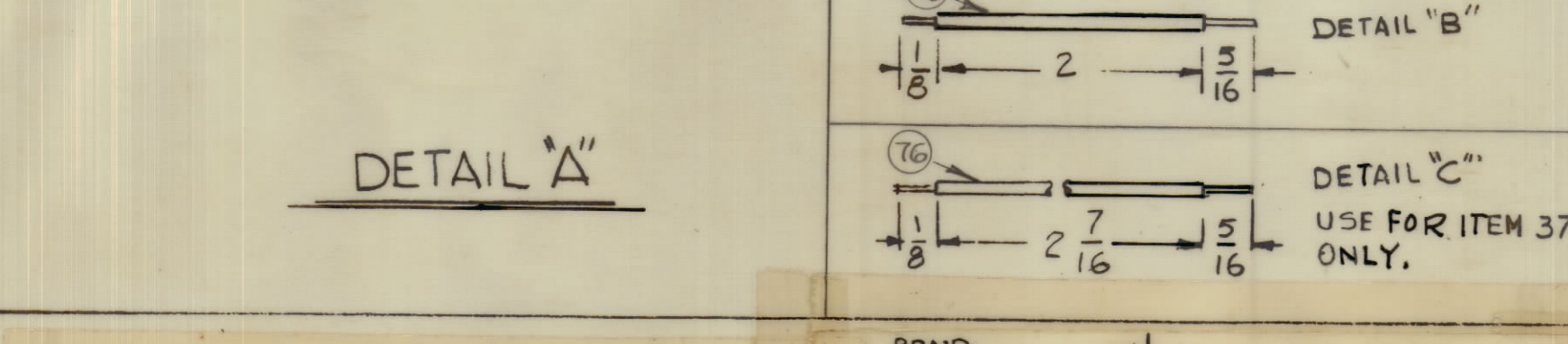
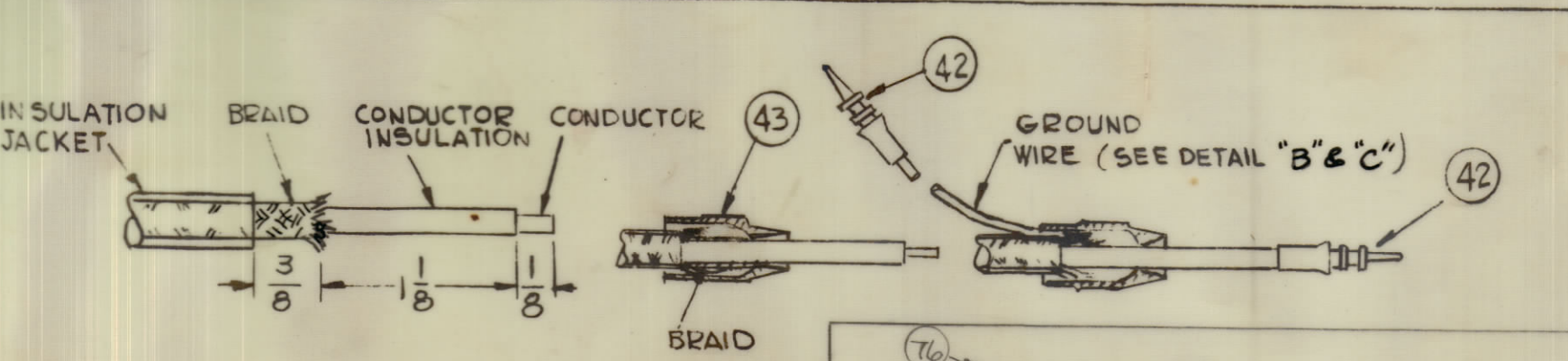
**D** THE ABOVE SYMBOL DENOTES END OF SHIELD, WHICH SHOULD BE TERMINATED AS SHOWN. SEE DETAIL "A"

**A** WIRES SHOULD BE PLACED IN CABLE IN NUMERICAL SEQUENCE AS THEY APPEAR IN ITEM COLUMN BY CATEGORY.

- ALL R.F. CABLES
- ALL SHIELDED CABLES
- ALL OTHERS

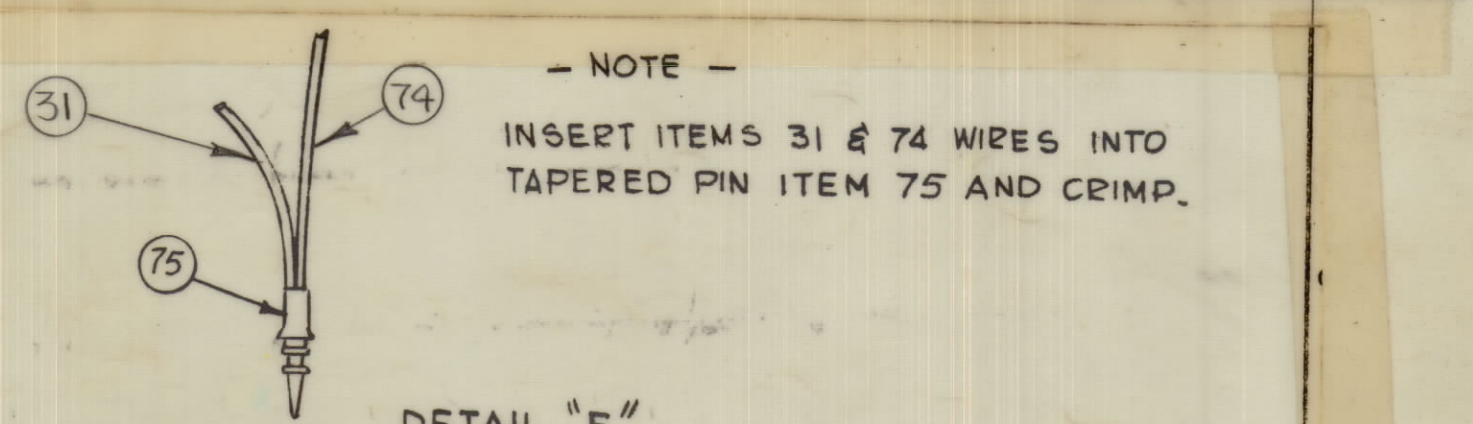
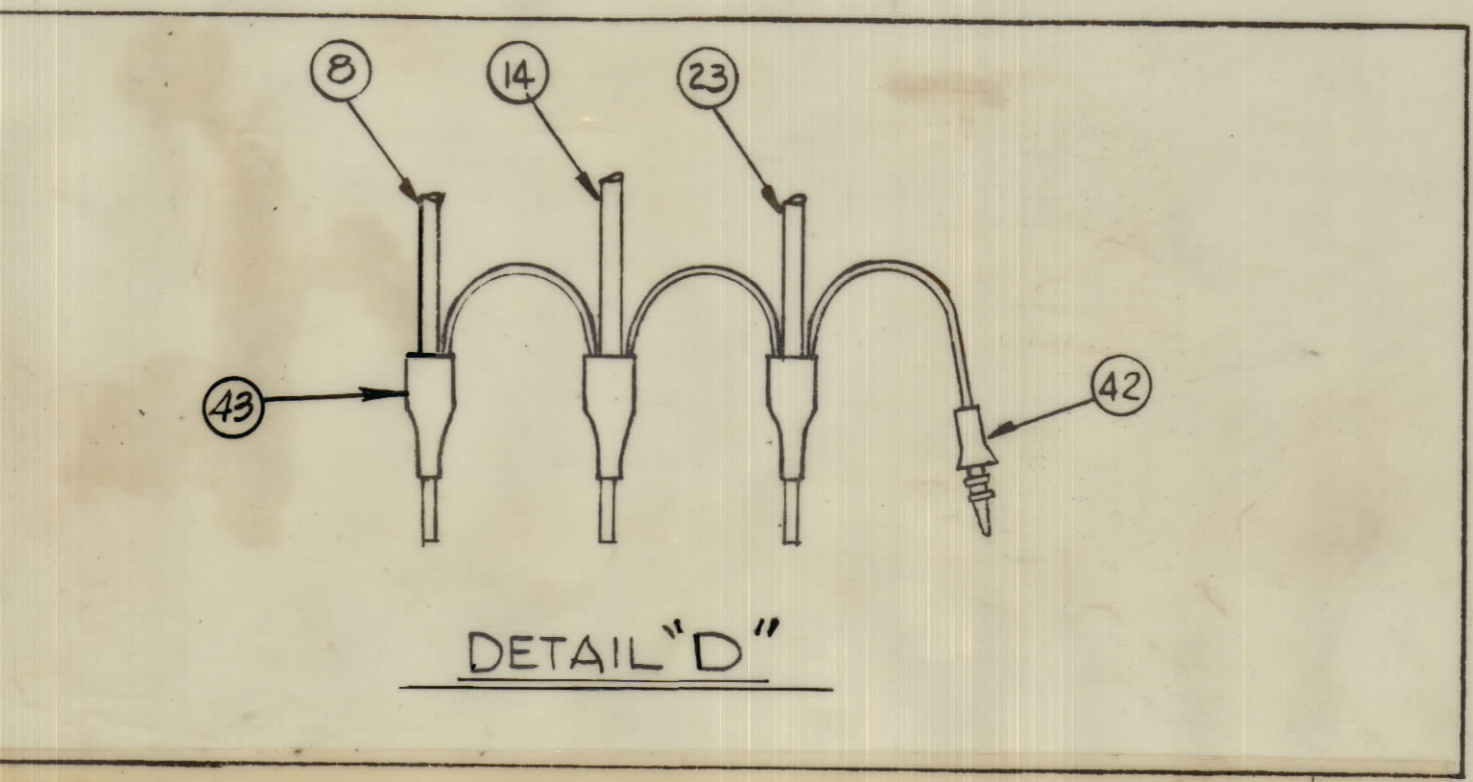
SPACE LACING APPROXIMATELY 3/4" APART.

NOTE: ON RG 174/U BREAKOUT 12, SEE DETAIL "A"



**1.** SLIDE OUTER RING OVER CABLE JACKET. TRIM CABLE AS SHOWN. INSERT CABLE DIELECTRIC AND CENTER CONDUCTOR INTO INSIDE DIAMETER OF INNER SLEEVE SOLDER CENTER CONDUCTOR TO COAXIAL CENTER CONTACT.

**2.** SLIDE OUTER RING FORWARD UNTIL FLUSH WITH COAXIAL SHELL, CONFINING BRAID BETWEEN OUTER RING AND INNER SLEEVE. SOFT SOLDER OUTER RING TO ASSEMBLY THROUGH CROSS-DRILLED SOLDER HOLE.



**NOTE**

INSERT ITEMS 31 & 74 WIRES INTO TAPERED PIN ITEM 75 AND CRIMP.

**NOTE:**

COLORS DENOTE PIN NOS. OF CONNECTORS, USE RTMA COLOR CODE

USE .042 PX100 ON \*26 WIRE

USE .053 PX100 ON ALL RG174/U WIRE

QTY/UNIT	SCALE	MODEL USED ON	ASBY. NO.
1	1:1	S401-451	

UNLESS OTHERWISE SPECIFIED DIMENSIONS ARE IN INCHES AND INCLUDE CHEMICALLY APPLIED OR PLATED FINISHES

DECIMALS: ± .005  
FRACTIONS: ± 1/64 ANGLES: ± 0° 30'

**THE TECHNICAL MATERIEL CORP.**  
MAMARONECK, NEW YORK

**WIRING HARNESS, BRANCHED**

DATE: 1/26/61  
DRAWN: [Signature]  
CHECKED: [Signature]  
ELECT. DES: [Signature]  
MECH. DES: [Signature]

FINAL APPROVAL: [Signature]  
DATE: 1/26/61

REV. LTR. [Signature]

CA1346

CA1346