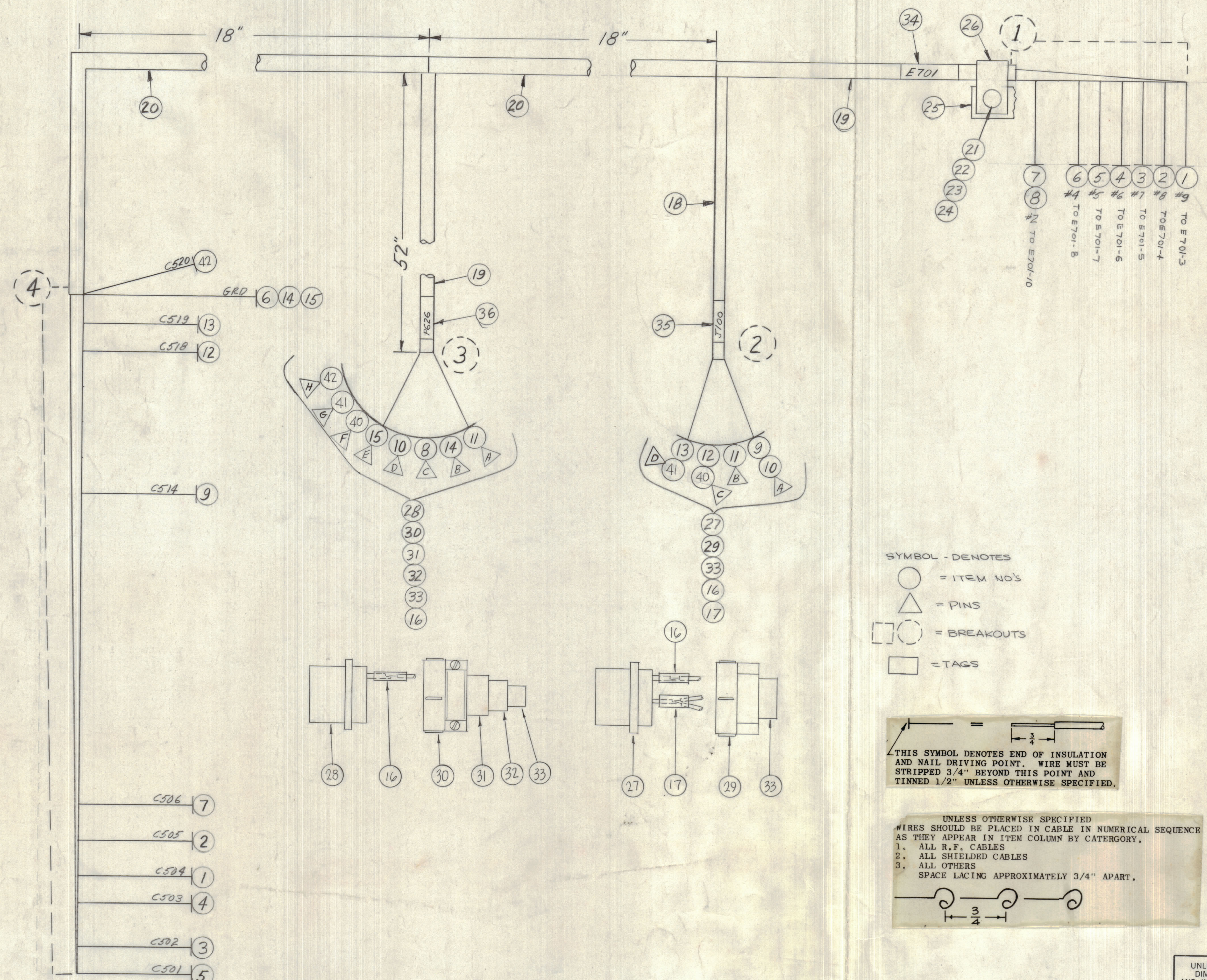


REVISIONS						
ZONE	LTR	DESCRIPTION	DATE	E.M.N.NO	DRAFT	CHKD APPD
	X	EXP. RELEASE	2-21-67			
	X1	ITEMS 40, 41, 42 ADDED	2-22-67			
	X2	17, 27 WAS MS3106B14S-2P	3-28-67			
	Ø	ORIGINAL RELEASE FOR PRODUCTION	4-6-67			



SYMBOL - DENOTES

- = ITEM NO'S
- △ = PINS
- = BREAKOUTS
- ▭ = TAGS

THIS SYMBOL DENOTES END OF INSULATION AND NAIL DRIVING POINT. WIRE MUST BE STRIPPED 3/4" BEYOND THIS POINT AND TINNED 1/2" UNLESS OTHERWISE SPECIFIED.

UNLESS OTHERWISE SPECIFIED WIRES SHOULD BE PLACED IN CABLE IN NUMERICAL SEQUENCE AS THEY APPEAR IN ITEM COLUMN BY CATEGORY.

- ALL R.F. CABLES
- ALL SHIELDED CABLES
- ALL OTHERS

SPACE LACING APPROXIMATELY 3/4" APART.

FROM BREAKOUT	TO BREAKOUT	QTY. REQ.	ITEM	PART NO.	DESCRIPTION	TO	SYMBOL
			42	MWC22(7) 93	P626-H		C520
			41	MWC22(7) 95	P626-G		P604-D, J100
			40	MWC22(7)U96	P626-F		P604-C, J100
		X	39	BS100	SOLDER, TIN ALLOY		
		X	38	TA100-1	INS, TAPE EL-GL 1/4 W		
		X	37	CD101-1MW	CD, LACING NYLON		
		1	36	LA107-20-P626	SLV, MKR, CBL		
		1	35	LA107-16-J100	SLV, MKR, CBL		
		1	34	LA107-13-E701	SLV, MKR, CBL		
		2	33	MS3420-6A	BUSH, RUB		
		1	32	MS3420-8A	BUSH, RUB		
		1	31	MS3420-12A	BUSH, RUB		
		1	30	MS3057-12	CLP, CBL, EL CONN		
		1	29	MS3057-6	CLP, CBL, EL CONN		
		1	28	MS3106B20-27P	CONN, PL, ML 14/C		
		1	27	MS3106B14S-2S	CONN, PL, FML 4/C		
		1	26	CU102-3	CLP, LOOP		
		1	25	TM105-11AL	TERM BD-FNG		
		1	24	NTH0632BNS	NUT, HEX		
		1	23	LWE06MRN	WASH, LK, EXT		
		1	22	FW06HBN	WASH, FLAT		
		1	21	SCBP0632BN6	SCREW, MACHINE		
		20	20	PX100-1-330	INS, SLVG, BLK		
		19	19	-263			
		18	18	-208			
		17	17	-133			
		16	16	PX100-1-106	INS, SLVG, BLK		
		3	4	15	MWC22(7) U0	P626-E	GRD
		3	4	14	0	P626-B	GRD
		2	4	13	95	P604-D	J100
		2	4	12	96	-C	J100
		2	3	11	97	-B	J100
		2	3	10	91	-A	J100
		2	4	9	91	P604-A	J100
		1	3	8	4	E701-10	P626-C
		1	4	7	4	-10	C506
		1	4	6	0	-8	GRD
		1	4	5	6	-7	C501
		1	4	4	8	-6	C503
		1	4	3	1	-5	C502
		1	4	2	5	-4	C505
		1	4	1	MWC22(7)U91	E701-3	C504

FINAL APPROVAL: F. BUDETTI, DATE: 4/16/67

MECH. DES. DATE: 6 APR 67

ELECT. DES. DATE: 2-21-67

CHECKED: [Signature], DATE: 2-21-67

DRAWN: [Signature], DATE: 2-21-67

UNLESS OTHERWISE SPECIFIED DIMENSIONS ARE IN INCHES AND INCLUDE CHEMICALLY APPLIED OR PLATED FINISHES

TOLERANCES ON

DECIMALS	FRACTIONS
.X ± .05	± 1/64
.XX ± .01	ANGLES
.XXX ± .005	± 0°-30'

APPLICATION: S401-451, S401-S401- CODE: A

NOTICE TO PERSONS RECEIVING THIS DRAWING: THE TECHNICAL MATERIEL CORPORATION claims proprietary right in the material disclosed hereon. This drawing is issued in confidence for engineering information only and may not be reproduced or used to manufacture anything shown hereon without permission from THE TECHNICAL MATERIEL CORPORATION to the user. This drawing is loaned for mutual assistance and is subject to recall at any time.

LIST OF MATERIAL

THE TECHNICAL MATERIEL CORP. MAMARONECK, NEW YORK

WIRING HARNESS, BRANCHED

SIZE: D 82679, CODE IDENT. NO.: CA1329, DWG NO.: CA1329

SCALE: 1:1, SHEET: OF