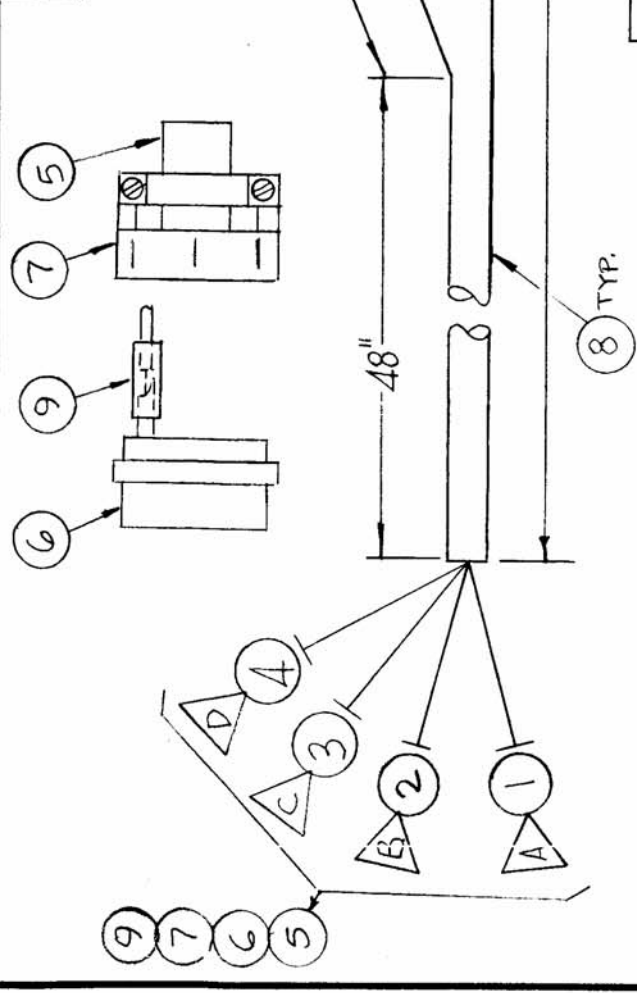


REQ. PER UNIT	1
MODEL	KIT-320
ASSY. NO.	
DATE	11-22-66
CA1298	



REQ. ITEM	PART NO.	F. BUDETTI DESCRIPTION	SYMBOL
X 11	BS100	SOLDER, TIN ALLOY	
2 10	TE120-1	TERM. LUG, SPADE	
X 9	PX100-1-106	INS. SLV.G, ELECT.	
X 8	PX100-1-208	INS. SLV.G, ELECT.	
1 7	MS3057-6	CLP, CBL, EL. CONN.	
1 6	MS3106A14S-2S	CONN. PL. FML	
1 5	MS3420-6A	BUSHING, RUBBER	
4	MWC22(7)U5	WIRE, ELECT, INS.	
3	4		
2	3		
1	MWC22(7)U2	WIRE, ELECT, INS.	

SYM	DESCRIPTION	DATE	CH. NO.	DRAFTS	CHECKER	ENG. APP.
Ø	ORIGINAL RELEASE FOR PRODUCTION	3/23/67			RME	
X1	COMPLETELY REVISED	1-10-67			MZ	
X	EXP. RELEASE	11-22-66			MZ	

UNLESS OTHERWISE SPECIFIED DIMENSIONS ARE IN INCHES AND INCLUDE CHEMICALLY APPLIED OR PLATED FINISHES

SCALE 1:1

DECIMALS
X ± .05
.XX ± .01
.XXX ± .005

FRACTIONS
± 1/64
ANGLES
± 0° 30'

TOLERANCES
A

CODE
A

THIS SYMBOL DENOTES END OF INSULATION AND NAIL DRIVING POINT. WIRE MUST BE STRIPPED 3/4" BEYOND THIS POINT AND TINNED 1/2" UNLESS OTHERWISE SPECIFIED.

TYPE & TEMPER	HEAT TREAT. SPEC.	DRAWN	CHECKED	FINAL APPROVAL
MATERIAL				
STOCK SIZE		THE TECHNICAL MATERIEL CORP. MAMARONECK. NEW YORK		
MATERIAL		CABLE, INTER-CONNECT		
FINISH & SPEC. NO.		CA1298		
ELEC. DES. APP.		MECH. DES. APP.		