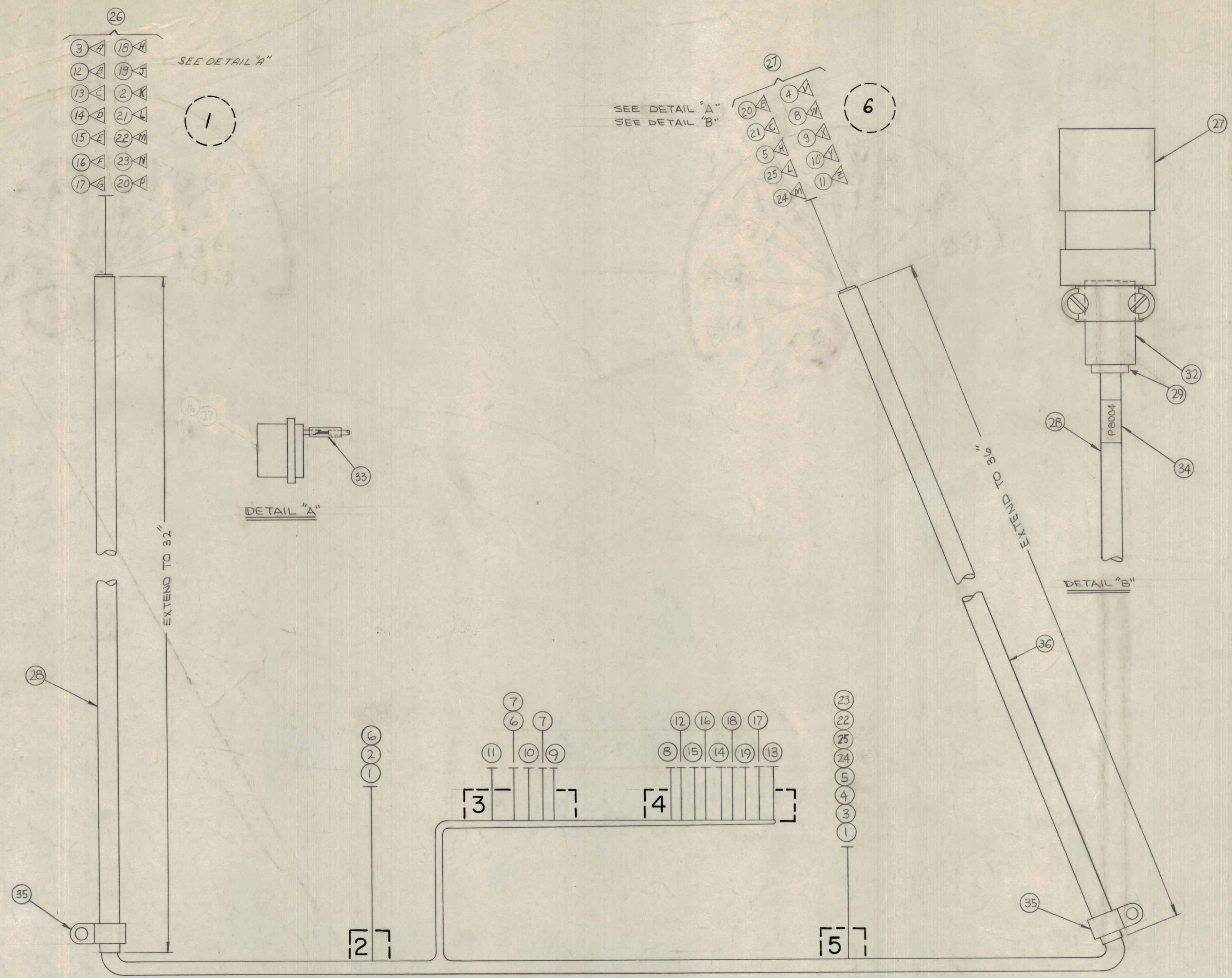


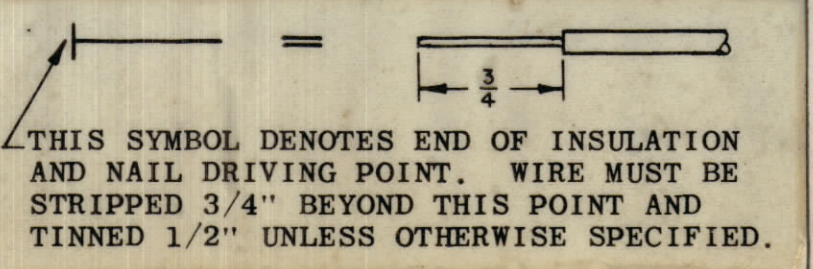
REVISIONS						
ZONE	SYM	DESCRIPTION	DATE	E.M.N. NO.	DRAFT	CHKD
X		EXPERIMENTAL RELEASE	11/21/64		WLU	
Ø		ORIGINAL RELEASE FOR PRODUCTION	2-13-67	Ø	RME	
A		ADDED ITEM 36, ITEM 22, 23, RELOCATED FROM BREAK-OUTS 1, 2, 5, ITEM 28, WIRE 29, 34, ITEM 35, WIRE 31, 32	3-6-67	17890	L.P.K.	CP



REQD.	ITEM	PART NUMBER	DESCRIPTION	SYMBOL
	36	PX100-1-2-263	SLEEVING, INSULATION	
	2	CUI02-3	CLAMP, "G" TYPE	
	1	LA101-P8004	WIRE, MARKER	
X	33	PX100-1-106	SLEEVING, INSULATION	
	1	MS3420-12A	SLEEVE, RUBBER	
X	31	CD101-1MW	CORD, LACING	
X	30	B5100	SOLDER, TIN ALLOY	
	1	MS3420-10A	SLEEVE, RUBBER	
	32	PX100-1-330	SLEEVING, INSULATION	
	1	M53106B24-28P	PLUG, MALE	
	1	M53102A20-295	PLUG, FEMALE	
C	5	25	MWC22(7)U9	P8004-L SI
C	5	24		P8004-M SI
5	1	23	4	SI P8014-N
5	1	22	3	SI M
6	1	21	5	P8004-C L
6	1	20	6	P8004-B P
4	1	19	98	A4535-12 J
4	1	18	97	11 H
4	1	17	96	13 G
4	1	16	95	9 F
4	1	15	94	8 E
4	1	14	93	10 D
4	1	13	MWC22(7)U92	14 C
4	1	12	MWC24(7)U91	7 P8014-B
3	6	11	MWC22(7)U94	1 P8004-Z
3	6	10	93	3 Y
3	6	9	92	5 X
4	6	8	91	6 P8004-W
3	3	7	7	2 A4535-4
3	2	6	7	A4535-2 FI
6	5	5	7	P8004-H SI
6	5	4	0	P8004-V SI
1	5	3	0	P8014-A SI
1	2	2	7	P8014-K FI
5	2	1	MWC22(7)U97	SI FI

SYMBOL NOTES
 [] DENOTES BREAKOUTS
 ○ DENOTES ITEM No'S
 △ DENOTES PIN No'S

UNLESS OTHERWISE SPECIFIED WIRES SHOULD BE PLACED IN CABLE IN NUMERICAL SEQUENCE AS THEY APPEAR IN ITEM COLUMN BY CATEGORY.
 1. ALL R.F. CABLES
 2. ALL SHIELDED CABLES
 3. ALL OTHERS
 SPACE LACING APPROXIMATELY 3/4" APART.



LIST OF MATERIAL			
FROM TO	REQD.	ITEM	DESCRIPTION

THE TECHNICAL MATERIEL CORP.			
MAMARONECK, NEW YORK			
TITLE			
WIRING, HARNESS, BRANCHED (LRCF-1)			
UNLESS OTHERWISE SPECIFIED DIMENSIONS ARE IN INCHES AND INCLUDE CHEMICALLY APPLIED OR PLATED FINISHES	DRAWN	DATE	FINAL APPROVAL
	W. J. Do	11/21/64	W. J. Do
	CHECKED	DATE	DATE
	W. J. Do	11/21/64	11/21/64
DECIMALS X ± .05 XX ± .01 XXX ± .005	FRACTIONS ± 1/64 ANGLES ± 0° 30'	ELECT. DES. DATE	MECH. DES. DATE
		W. J. Do	
		DATE	DATE