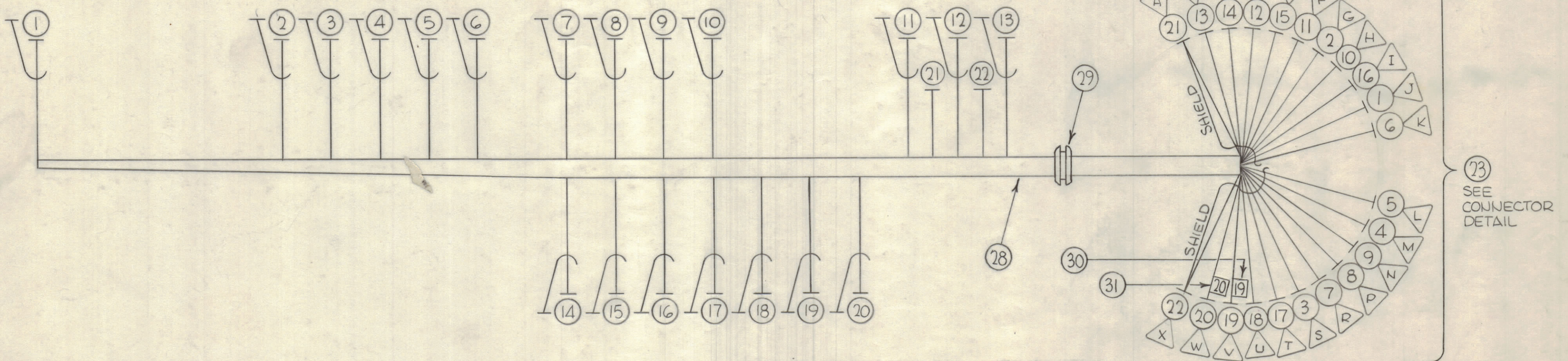
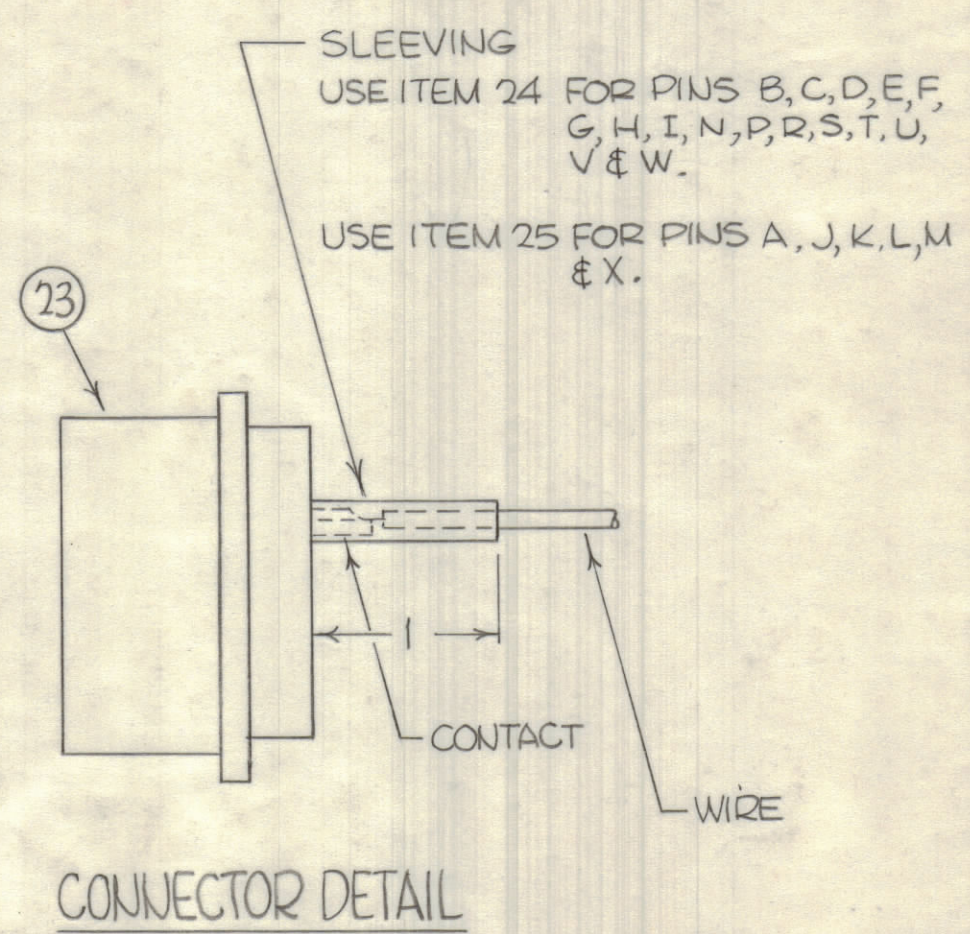


REVISIONS							
SYM	ZONE	DESCRIPTION	DATE	E.M.N. NO.	DRAFT	CHKD	APPD
X		EXPERIMENTAL RELEASE	9-17-66	VM	Jc		
X1		ADD ITEMS 28, 29, 30, 31	2-9-67	VM	Jc		
Ø		ORIG. RELEASE	1-9-69		RG		



23  
SEE CONNECTOR DETAIL

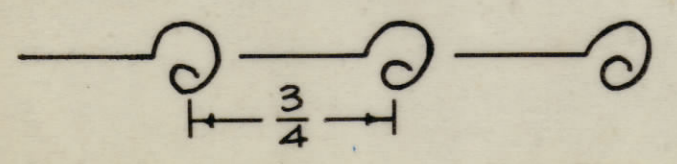
QTY REQ	ITEM	PART NO.	DESCRIPTION	SYMBOL
1	31	LA101-20	MARKER, WIRE	
1	30	LA101-19	MARKER, WIRE	
	29	EY102-15	GROMMET, RUBBER	
	28	PX100-1-438	INSUL, SLVG	
	27	BS100	SOLDER, SOFT	
	26	CD101-1MW	CORD, LACING, NYLON	
	25	PX100-1-148	INSUL, SLVG	
	24	PX100-1-106	INSUL, SLVG	
1	23	MS3102A-28-115	CONNECTOR, RECEPTACLE, FEMALE	
	22	MWC24(7)UO	WIRE, INSULATED	
	21	MWC24(7)UO	WIRE, INSULATED	
	20	MWC24(7)5J4	WIRE, INSULATED, SHIELDED JKT	
	19		6	
	18		90	
	17		98	
	16		97	
	15		7	
	14		3	
	13		93	
	12		95	
	11		96	
	10		91	
	9		94	
	8		5	
	7		92	
	6		8	
	5		2	
	4		1	
	3		9	
	2		4	
	1	MWC24(7)5J6	WIRE, INSULATED, SHIELDED JKT	



CONNECTOR DETAIL

△ DENOTES PIN  
○ DENOTES ITEM NO.

UNLESS OTHERWISE SPECIFIED WIRES SHOULD BE PLACED IN CABLE IN NUMERICAL SEQUENCE AS THEY APPEAR IN ITEM COLUMN BY CATEGORY.  
1. ALL R.F. CABLES  
2. ALL SHIELDED CABLES  
3. ALL OTHERS  
SPACE LACING APPROXIMATELY 3/4" APART.



THIS SYMBOL DENOTES END OF INSULATION AND NAIL DRIVING POINT. WIRE MUST BE STRIPPED 3/4" BEYOND THIS POINT AND TINNED 1/2" UNLESS OTHERWISE SPECIFIED.

THE ABOVE SYMBOL DENOTES END OF SHIELD, WHICH SHOULD BE TERMINATED AS SHOWN, LEAVING EXCESS SHIELDING AS A PIGTAIL. TIN PIGTAIL 1/4 INCH.

UNLESS OTHERWISE SPECIFIED DIMENSIONS ARE IN INCHES TOLERANCES ON FRACTIONS DECIMALS ANGLES ±1/64 ±.005 ±1/2°

FINAL APPROVAL	DATE
MECH. DES.	DATE 1/2/69
ELECT. DES.	DATE 9/29/66
CHECKED	DATE 9/23/66
DRAWN	DATE
APPROVED FOR	
CONTRACT NO.	

QTY REQ		ITEM		PART NO.		DESCRIPTION		SYMBOL	
BUTLER BILL OF MATERIAL									
THE TECHNICAL MATERIEL CORP. MAMARONECK, NEW YORK									
CABLE, ASSEMBLY KIT 315/APP-4A									
CODE		SIZE		DWG. NO.		ISSUE			
82679		C		CA1267		Ø			
SCALE					SHEET OF				

MAXIMUM ALLOWABLE TOLERANCES HAVE BEEN DETERMINED AND ANY DEVIATIONS WILL BE CAUSE FOR REJECTION.