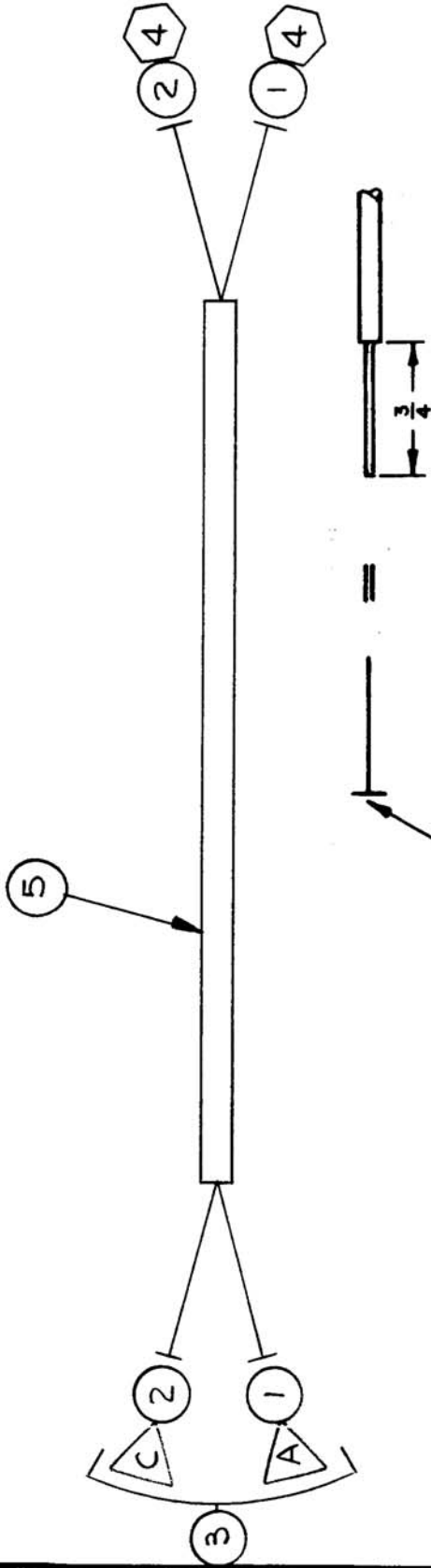


REQ. PER UNIT	1	USED ON	CA1263
MODEL	DDR-5	ASSY. NO.	AK102
		DATE	8-29-66



THIS SYMBOL DENOTES END OF INSULATION AND NAIL DRIVING POINT. WIRE MUST BE STRIPPED 3/4" BEYOND THIS POINT AND TINNED 1/2" UNLESS OTHERWISE SPECIFIED.

SYMBOL DENOTES

○ ITEM NUMBERS

◡ TERM. LUG ITEM NUMBERS

△ CONNECTOR PINS

REQ. ITEM	PART NO.	DESCRIPTION	SYMBOL
X 6	BS100	SOLDER, SOFT	
5"	PX100-1-133	INSULATION, SLVG	
2	TE120-2	TERMINAL LUG-SPADE	
1	PL247-25	CONNECTOR, PLUG	
7"	MWC24(7)U2	WIRE, ELECTRICAL, INS.	
7"	MWC24(7)U0	WIRE, ELECTRICAL, INS.	

REQ. ITEM	PART NO.	DESCRIPTION	SYMBOL
		THE TECHNICAL MATERIEL CORP. MAMARONECK. NEW YORK	
		CABLE ASSEMBLY (AK102 TO LOOP INPUT)	
		JL	
		DRAWN	
		CHECKED	
		FINAL APPROVAL	
		ELEC. DES. APP.	
		MECH. DES. APP.	
		FINISH & SPEC. NO.	

SYM	DESCRIPTION	DATE	CH. NO.	DRAFTS	CHECKER	ENG. APP.
Ø	ORIG. REL. FOR PROD.	8/31/66	Ø	JL	JL	JL
X	EXP. RELEASE	8/29/66	X	JL	JL	JL

UNLESS OTHERWISE SPECIFIED  
DIMENSIONS ARE IN INCHES AND INCLUDE  
CHEMICALLY APPLIED OR PLATED FINISHES

SCALE 1/1

CODE

TOLERANCES

FRACTIONS  
± 1/64  
ANGLES  
± 0° 30'

DECIMALS  
.X ± .05  
.XX ± .01  
.XXX ± .005