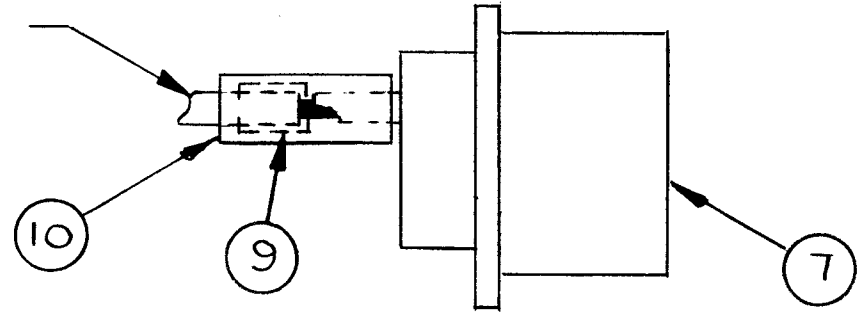
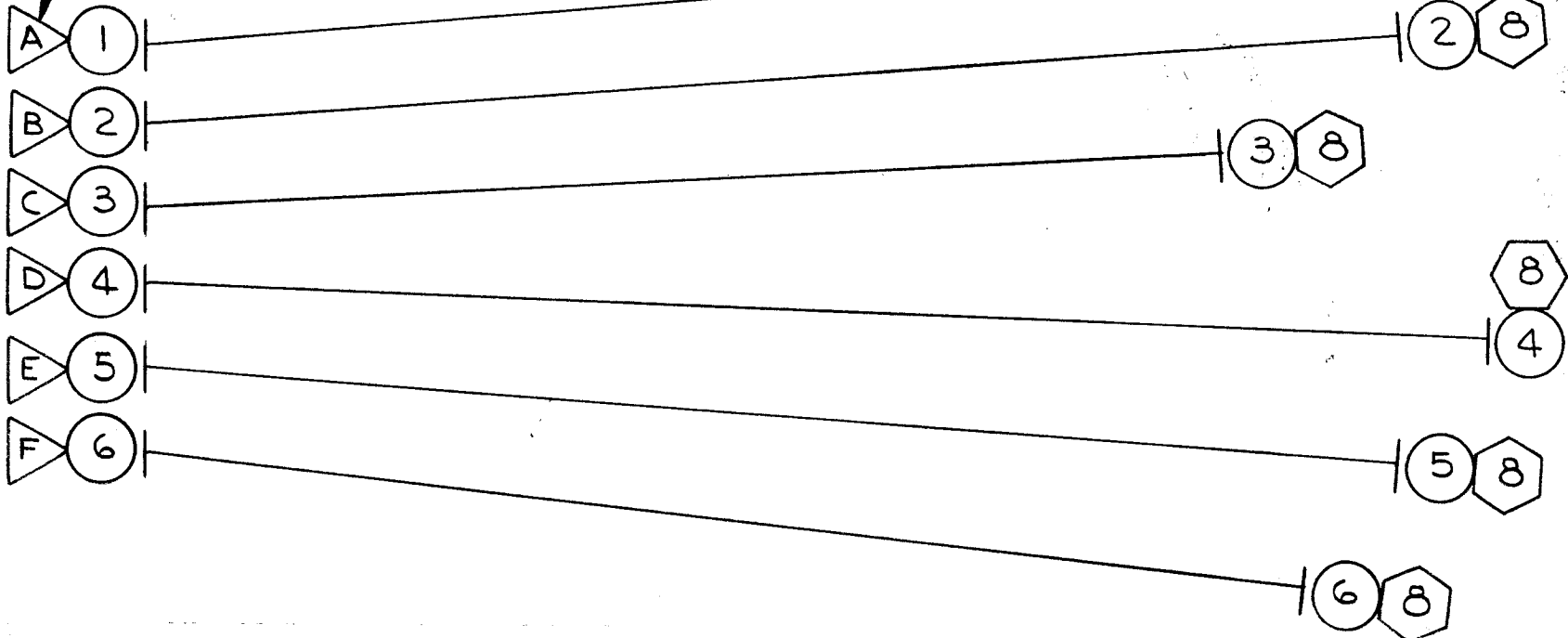


CONDUCTOR

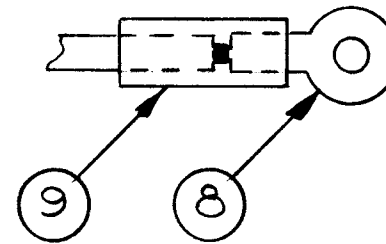


DETAIL-A-

7 PIN NUMBERS
SEE DETAIL-A-



CA1262



TYPICAL ITEM-8
ASSEMBLY

THIS SYMBOL DENOTES END OF INSULATION AND NAIL DRIVING POINT. WIRE MUST BE STRIPPED 3/4" BEYOND THIS POINT AND TINNED 1/2" UNLESS OTHERWISE SPECIFIED.

SYMBOL DENOTES

- ITEM NUMBERS
- TERMINAL LUG IT. NO.

NOTE:
DO NOT LACE ABOVE WIRES TOGETHER.
LEAVE ALL WIRES LOOSE AFTER CONNECTING TO ITEM-7.

1	TCP-2	A5254
Q'TY./UNIT	MODEL USED ON	ASS'Y. NO.
SCALE 1/1	CODE	

THE CONTENTS OF THIS DRAWING ARE THE EXCLUSIVE PROPERTY OF THE TECHNICAL MATERIEL CORP. ITS UNAUTHORIZED USE OR REPRODUCTION IN WHOLE OR IN PART IS STRICTLY FORBIDDEN.

NOTES

REVISIONS

SYM	DESCRIPTION	DATE	E.M.N. NO.	DRAFT	CHKD	APPD
X	EXPERIMENTAL RELEASE	8/15/66	X	J.L.	FQ	WF
Ø	ORIGINAL RELEASE FOR PRODUCTION	12/2/66	Ø	CU		

REQ'D.	ITEM	PART NUMBER	DESCRIPTION	SYMBOL
X	11	BS 100	SOLDER, TIN ALLOY	
X	10	PX100-1-.250	INSULATION SLVG	
X	9	PX830-8-1	INSULATION SLVG, SHRINK	
6	8	TE141-3	TERMINAL LUG	
1	7	MS3102A-24-10P	CONNECTOR, ELECTRICAL	
	6	HWC10(37) B7	WIRE, ELECTRICAL, INS.	
	5	B8		
	4	B9		
	3	B7		
	2	B8		
	1	HWC10(37) B9	WIRE, ELECTRICAL, INS.	

BUDETTI		LIST OF MATERIAL			
MATERIAL		THE TECHNICAL MATERIEL CORP. MAMARONECK, NEW YORK			
FINISH		TITLE CABLE ASSEMBLY, POWER, ELEC.			
UNLESS OTHERWISE SPECIFIED DIMENSIONS ARE IN INCHES AND INCLUDE CHEMICALLY APPLIED OR PLATED FINISHES		DRAWN J.L. CHECKED [Signature] ELECT. DES. [Signature] MECH. DES. [Signature]	DATE 8/15/66 DATE 11-30-66 DATE	FINAL APPROVAL [Signature] DATE 12/2/66 CA1262 SHEET	DATE 12-6-66 REV. LTR.