

REVISIONS							
ZONE	SYM	DESCRIPTION	DATE	E.M.N. NO.	DRAFT	CHKD	APPD
	Ø	ORIGINAL RELEASE FOR PRODUCTION	9.12.66	44	440		

H

G

F

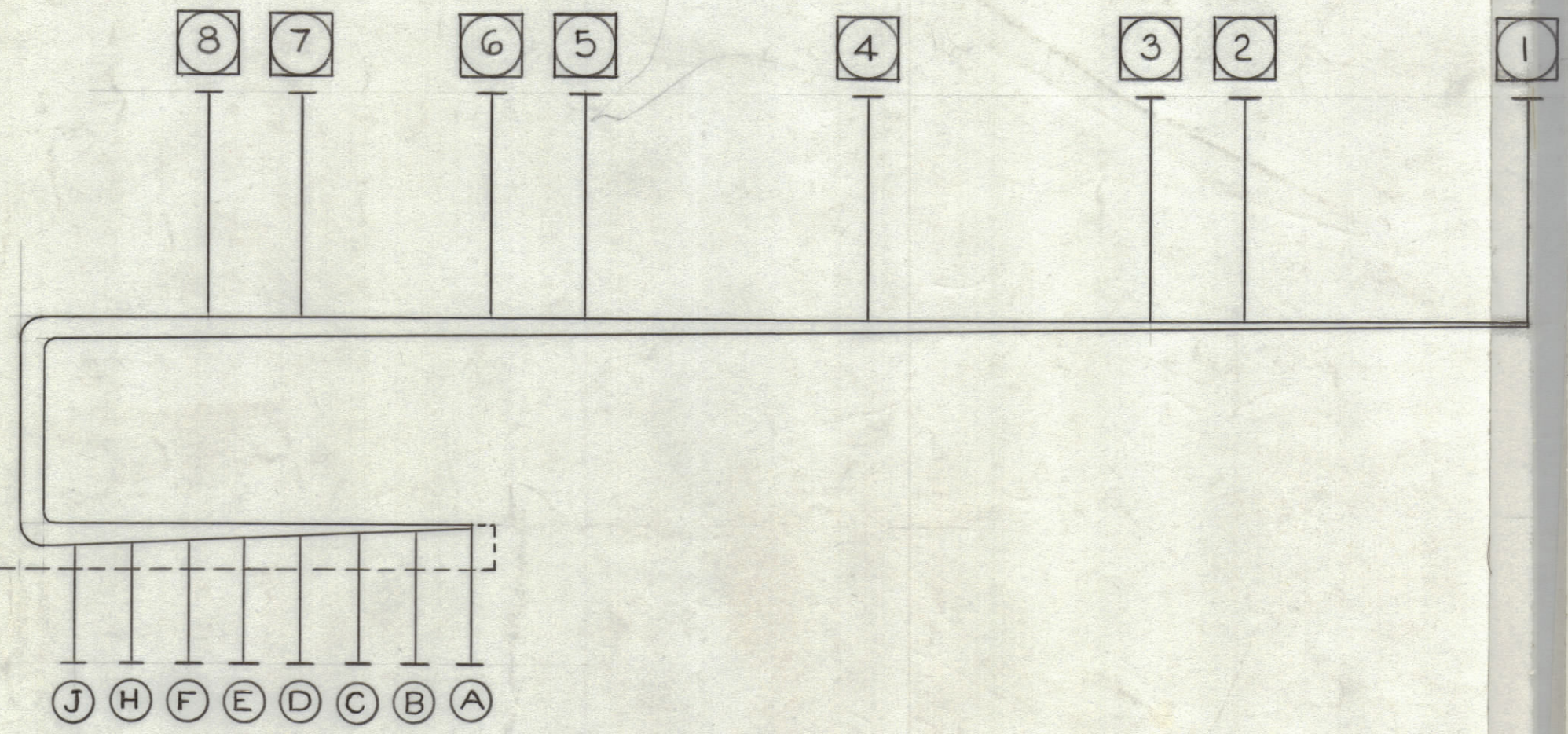
E

D

C

B

A



CA 1249 Model LSCA-1 Sheet 1 of 1

REQ	ITEM	PART NUMBER	BREAKOUT		DESTINATION OR DESCRIPTION	
			FROM	TO	FROM	TO
1		MWC24 (7) U0	9-J	8	TB101-8	S103-8 (ON)-1
2		0	7	8	S103-7 (OFF)-1	-8 (ON)-1
4		0	7	6	-7 (OFF)-1	-6 (ON)-1
5		0	5	6	-5 (OFF)-1	-6 (ON)-1
6		0	5	4	-5 (OFF)-1	-4 (TUNE)-3
7		0	3	4	-3 (ON)-1	-4 (TUNE)-3
8		0	1	2	-3 (ON)-1	-2 (OFF)-1
9		98	9-H	4	S103-1 (RESET)-1	-2 (OFF)-1
10		8	TB101-7	8	TB101-6	-4 (TUNE)-4
11		8	9-F	8	S103-7 (OFF)-2	-8 (ON)-2
12		8	7	6	-7 (OFF)-2	-8 (ON)-2
13		8	5	6	-5 (OFF)-2	-6 (ON)-2
14		8	5	4	-5 (OFF)-2	-6 (ON)-2
15		8	3	4	-3 (ON)-2	-4 (TUNE)-2
16		8	3	2	-3 (ON)-2	-4 (TUNE)-2
17		8	1	2	-3 (ON)-2	-2 (OFF)-2
18		9	9-E	8	S103-1 (RESET)-2	-2 (OFF)-2
19		9	TB101-5	8	S103-7 (OFF)-5	-8 (ON)-7
20		9	7	6	-7 (OFF)-5	-8 (ON)-7
21		9	5	6	-5 (OFF)-5	-6 (ON)-7
22		9	5	3	-5 (OFF)-5	-6 (ON)-7
23		9	2	3	-5 (OFF)-5	-3 (ON)-5
24		9	2	1	-2 (OFF)-3	-3 (ON)-5
25		94	9-D	6	S103-2 (OFF)-3	S103-1 (RESET)-9
26		94	5	6	TB101-4	S103-6 (ON)-8
27		94	5	3	S103-5 (OFF)-6	-6 (ON)-8
28		94	2	3	-5 (OFF)-6	-3 (ON)-6
29		94	2	3	-2 (OFF)-4	-3 (ON)-6
30		93	9-C	8	S103-2 (OFF)-4	-1 (RESET)-10
31		93	7	8	TB101-3	-8 (ON)-8
32		93	7	6	S103-7 (OFF)-6	-8 (ON)-8
33		93	3	6	-7 (OFF)-6	-6 (ON)-6
34		93	3	1	-3 (ON)-4	-6 (ON)-6
35		92	9-B	8	S103-3 (ON)-4	-1 (RESET)-8
36		92	6	8	TB101-2	-8 (ON)-6
37		92	6	8	S103-6 (ON)-4	-8 (ON)-6
38		92	1	5	S103-6 (ON)-4	-5 (OFF)-4
39		91	9-A	8	S103-1 (RESET)-6	-5 (OFF)-4
40		91	7	8	TB101-1	-5 (OFF)-4
41		MWC24 (7) U91	7	8	S103-7 (OFF)-4	-8 (ON)-4
42	X	TE120-2	7	1	S103-7 (OFF)-4	-8 (ON)-4
43	X	CD101-3MW			LUG, TERMINAL	S103-1 (RESET)-4
44	X	BS100			LACING TAPE	
					SOLDER, SOFT	

CA1249

THIS SYMBOL DENOTES END OF INSULATION AND NAIL DRIVING POINT.

○ DENOTES STATION

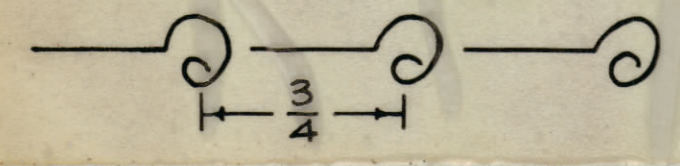
⬡ DENOTES ITEM

○ DENOTES BREAKOUT POINT

UNLESS OTHERWISE SPECIFIED WIRES SHOULD BE PLACED IN CABLE IN NUMERICAL SEQUENCE AS THEY APPEAR IN ITEM COLUMN BY CATEGORY.

- ALL R.F. CABLES
- ALL SHIELDED CABLES
- ALL OTHERS

SPACE LACING APPROXIMATELY 3/4" APART.



NOTES

LSCA-1		EATON LIST OF MATERIAL		THE TECHNICAL MATERIEL CORP. MAMARONECK, NEW YORK	
Q'TY./UNIT	MODEL USED ON	ASS'Y. NO.	DESCRIPTION	SYMBOL	TITLE
SCALE	CODE				CABLE, SWITCH
THE CONTENTS OF THIS DRAWING ARE THE EXCLUSIVE PROPERTY OF THE TECHNICAL MATERIEL CORP. ITS UNAUTHORIZED USE OR REPRODUCTION IN WHOLE OR IN PART IS STRICTLY FORBIDDEN.			UNLESS OTHERWISE SPECIFIED DIMENSIONS ARE IN INCHES AND INCLUDE CHEMICALLY APPLIED OR PLATED FINISHES		
DECIMALS .X ± .05 .XX ± .01 .XXX ± .005		FRACTIONS ± 1/64 ANGLES ± 0° 30'		TOLERANCES	
DRAWN		DATE		FINAL APPROVAL	
CHECKED		DATE		DATE	
ELECT. DES.		DATE		DATE	
MECH. DES.		DATE		DATE	
SHEET		SHEET		SHEET	
REV. LTR.		REV. LTR.		REV. LTR.	