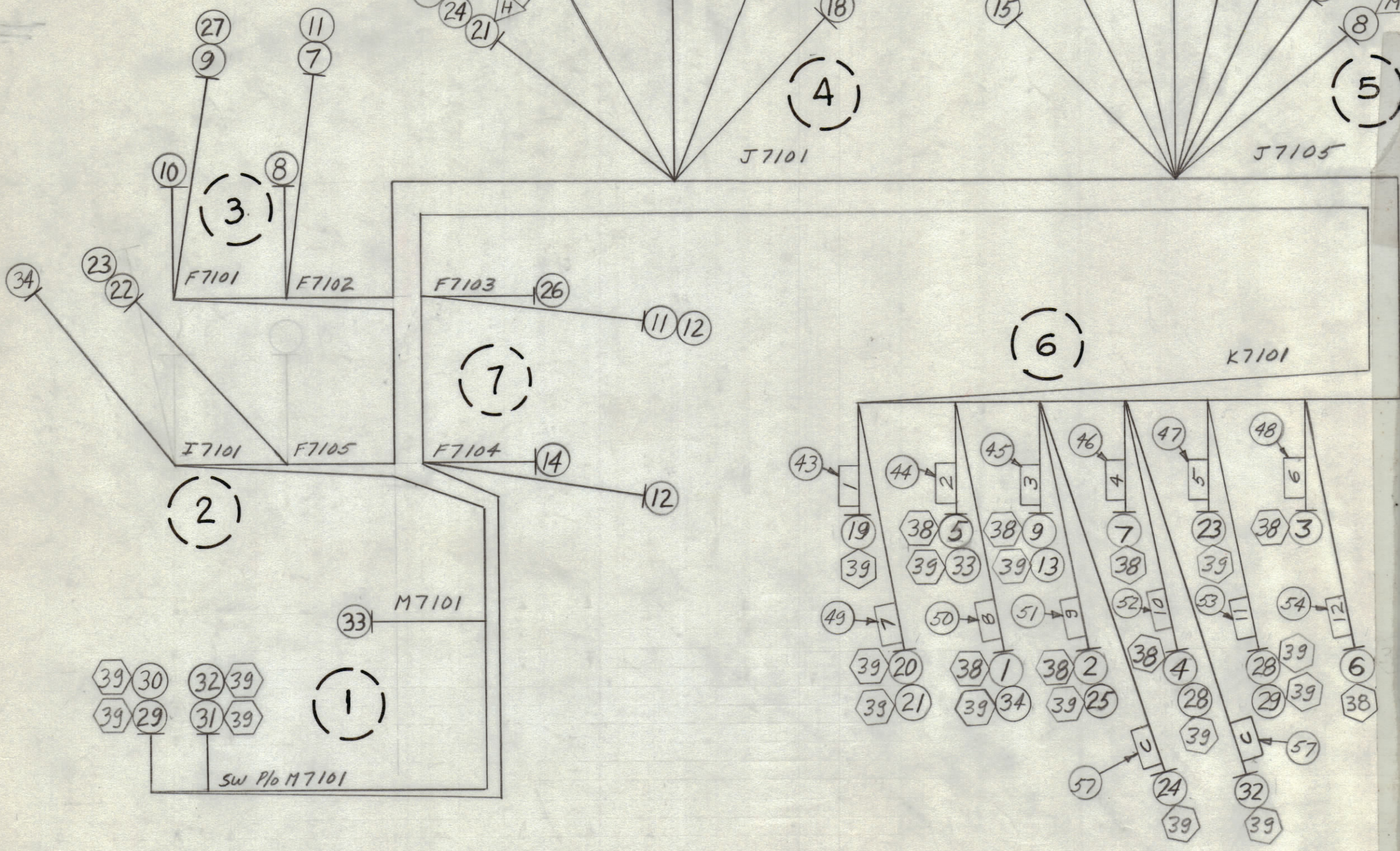
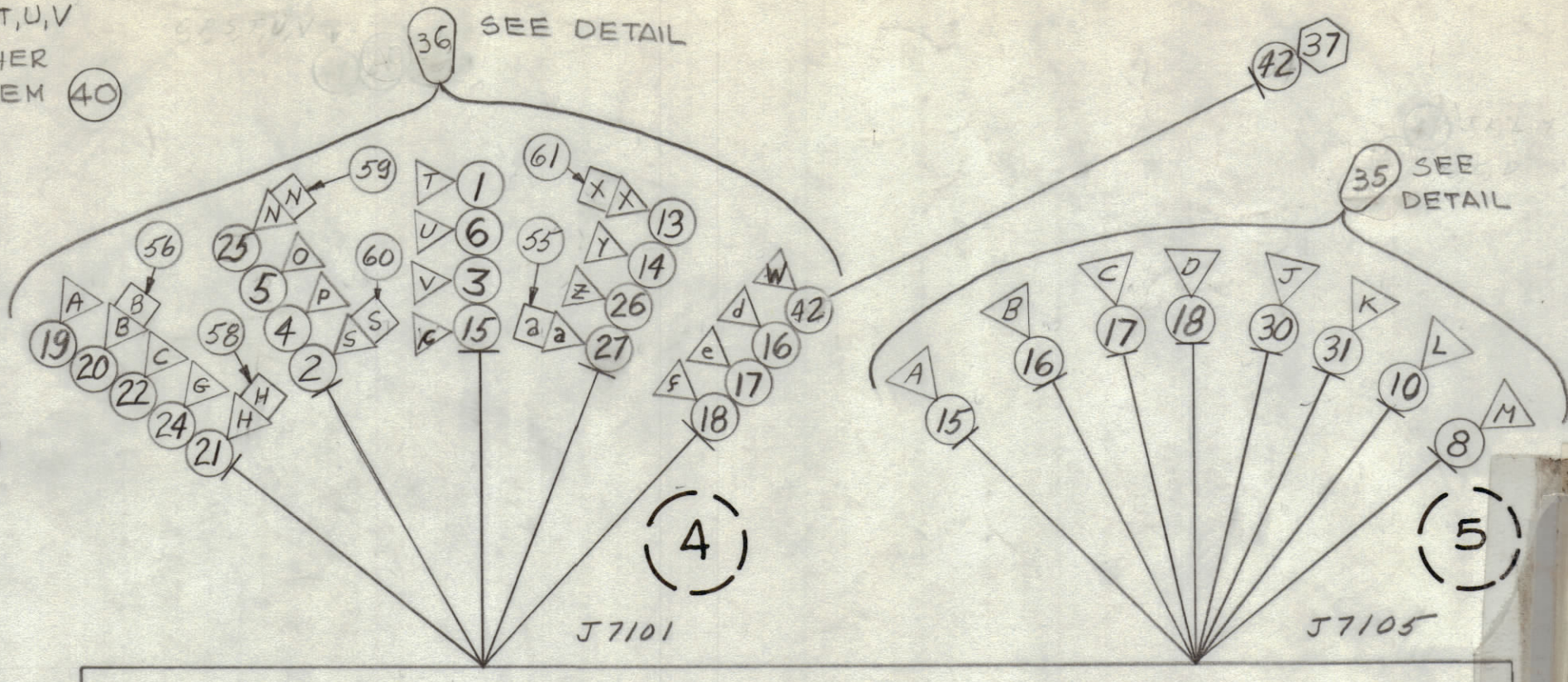
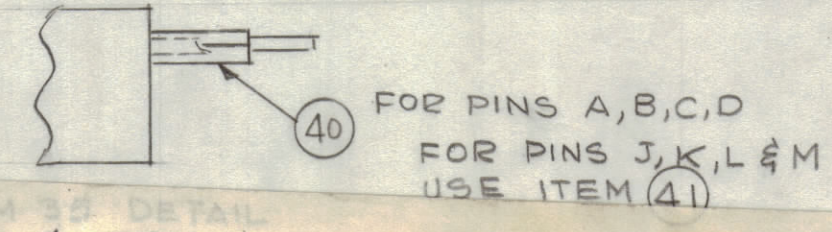
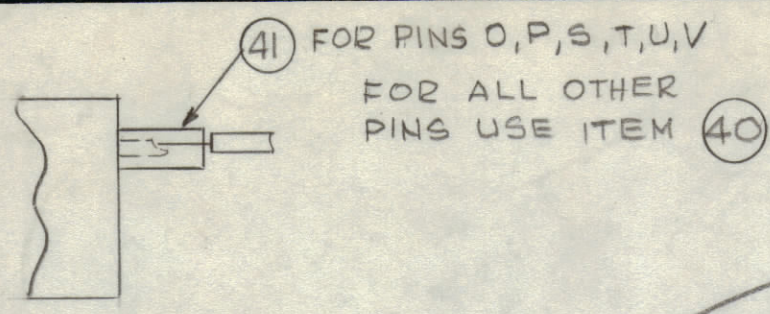


| REVISIONS |     |                                 |        |            |      |
|-----------|-----|---------------------------------|--------|------------|------|
| ZONE      | SYM | DESCRIPTION                     | DATE   | E.M.N. NO. | APPD |
|           | Ø   | ORIGINAL RELEASE FOR PRODUCTION | 5/9/67 | Ø          | CV   |



Sheet 1 of 2

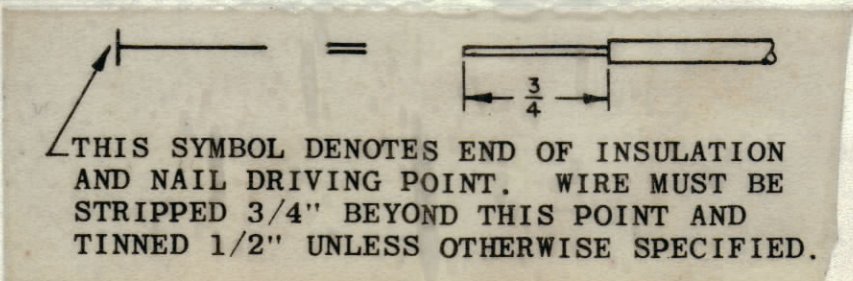
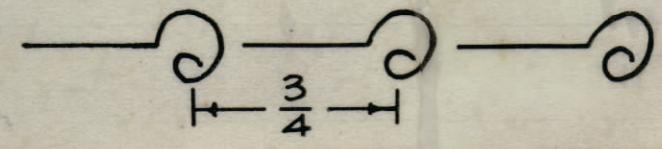
| REQ | ITEM        | PART NO.      | BREAKOUT | DESTINATION OR DESCRIPTION |
|-----|-------------|---------------|----------|----------------------------|
|     |             |               | FROM TO  | FROM OR DESCRIPTION TO     |
| 1   | MWC14 (19)U | 8             | 4        | J7101 PIN T                |
| 2   |             | 7             | 4        | K7101 TERM 8               |
| 3   |             | 5             | 4        | S                          |
| 4   |             | 9             | 4        | V                          |
| 5   |             | 98            | 4        | P                          |
| 6   | MWC14 (19)U | 4             | 4        | O                          |
| 7   |             | 90            | 3        | J7101 PIN U                |
| 8   |             | 3             | 3        | F7102                      |
| 9   |             | 97            | 3        | F7102                      |
| 10  | MWC14 (19)U | 2             | 3        | F7101                      |
| 11  | MWC16 (19)U | 90            | 3        | F7101                      |
| 12  | MWC16 (19)U | 90            | 3        | F7102                      |
| 13  | MWC20 (7)U  | 97            | 7        | F7104                      |
| 14  |             | 91            | 4        | J7101 PIN X                |
| 15  |             | 6             | 4        | Y                          |
| 16  |             | 93            | 4        | c                          |
| 17  |             | 94            | 4        | d                          |
| 18  |             | 95            | 4        | e                          |
| 19  |             | 1             | 4        | f                          |
| 20  |             | 2             | 4        | A                          |
| 21  |             | 2             | 4        | B                          |
| 22  |             | 90            | 4        | H                          |
| 23  |             | 90            | 4        | J7101 PIN C                |
| 24  |             | 3             | 2        | F7105                      |
| 25  | MWC20 (7)U  | 7             | 4        | J7101 PIN G                |
| 26  | MWC18 (16)U | 92            | 4        | J7101 PIN N                |
| 27  | MWC18 (16)U | 97            | 4        | J7101 PIN Z                |
| 28  | MWC20 (7)U  | 9             | 4        | J7101 PIN a                |
| 29  |             | 9             | 6        | K7101 TERM 10              |
| 30  |             | 9             | 6        | K7101 TERM 11              |
| 31  |             | 1             | 5        | J7105 PIN J                |
| 32  |             | 1             | 5        | J7105 PIN K                |
| 33  |             | 98            | 6        | K7101 COIL                 |
| 34  | MWC20 (7)U  | 8             | 1        | M7101                      |
| 1   | 35          | MS3102A28-11P | 6        | K7101 TERM 8               |
| 1   | 36          | MS3102A32-7P  |          | CONN, RECP, ML             |
| 1   | 37          | TE104-2       |          | CONN, RECP, ML             |
| 8   | 38          | TE159-34160   |          | TERM., LUG, LKG            |
| 17  | 39          | TE156-32951   |          | TERM., LUG, INS.           |
|     | 40          | PX100-1-106   |          | TERM., LUG, INS.           |
|     | 41          | PX100-1-148   |          | INS. SLVG, SZ 10           |
|     | 42          | MWC20 (7)U    |          | INS. SLVG, SZ 7            |
| 1   | 43          | LA101-1       | 4        | J7101 PIN W                |
| 2   | 44          | -2            | 4        | BAND, MARKER, CBL          |
| 2   | 45          | -3            |          |                            |
| 1   | 46          | -4            |          |                            |
| 1   | 47          | -5            |          |                            |
| 1   | 48          | -6            |          |                            |
| 2   | 49          | -7            |          |                            |
| 2   | 50          | -8            |          |                            |
| 2   | 51          | -9            |          |                            |
| 2   | 52          | -10           |          |                            |
| 2   | 53          | LA101-11      |          | BAND, MARKER, CBL          |

- ~ SYMBOL DENOTES ~
- = ITEM No.
  - ◡ = LUGS.
  - ▽ = PIN No.
  - = MARKER No.
  - (with dot) = CONNECTOR
  - (with dashed line) = BREAKOUT

UNLESS OTHERWISE SPECIFIED WIRES SHOULD BE PLACED IN CABLE IN NUMERICAL SEQUENCE AS THEY APPEAR IN ITEM COLUMN BY CATEGORY.

- ALL R.F. CABLES
- ALL SHIELDED CABLES
- ALL OTHERS

SPACE LACING APPROXIMATELY 3/4" APART.



|            |               |
|------------|---------------|
| KIT 180    |               |
| Q'TY./UNIT | MODEL USED ON |
| SCALE      | ASS'Y. NO.    |
|            | CODE          |

| LIST OF MATERIAL  |           |                              |                |
|---|-----------|------------------------------|----------------|
| MATERIAL  |           | THE TECHNICAL MATERIEL CORP. |                |
| FINISH  |           | MAMARONECK, NEW YORK         |                |
| UNLESS OTHERWISE SPECIFIED DIMENSIONS ARE IN INCHES AND INCLUDE CHEMICALLY APPLIED OR PLATED FINISHES |           | TITLE                        |                |
|   |           | WIRING HARNESS, BRANCHED     |                |
| DECIMALS  | FRACTIONS | DRAWN                        | DATE           |
| .X ± .05  | ± 1/64    | DATE                         | FINAL APPROVAL |
| .XX ± .01   | ANGLES    | DATE                         | DATE           |
| .XXX ± .005   | ± 0° 30'  | DATE                         | DATE           |
| TOLERANCES  |           | CA 1216                      |                |
|   |           | SHEET                        |                |
|   |           | REV. LTR.                    |                |

NOTES

THE CONTENTS OF THIS DRAWING ARE THE EXCLUSIVE PROPERTY OF THE TECHNICAL MATERIEL CORP. ITS UNAUTHORIZED USE OR REPRODUCTION IN WHOLE OR IN PART IS STRICTLY FORBIDDEN.