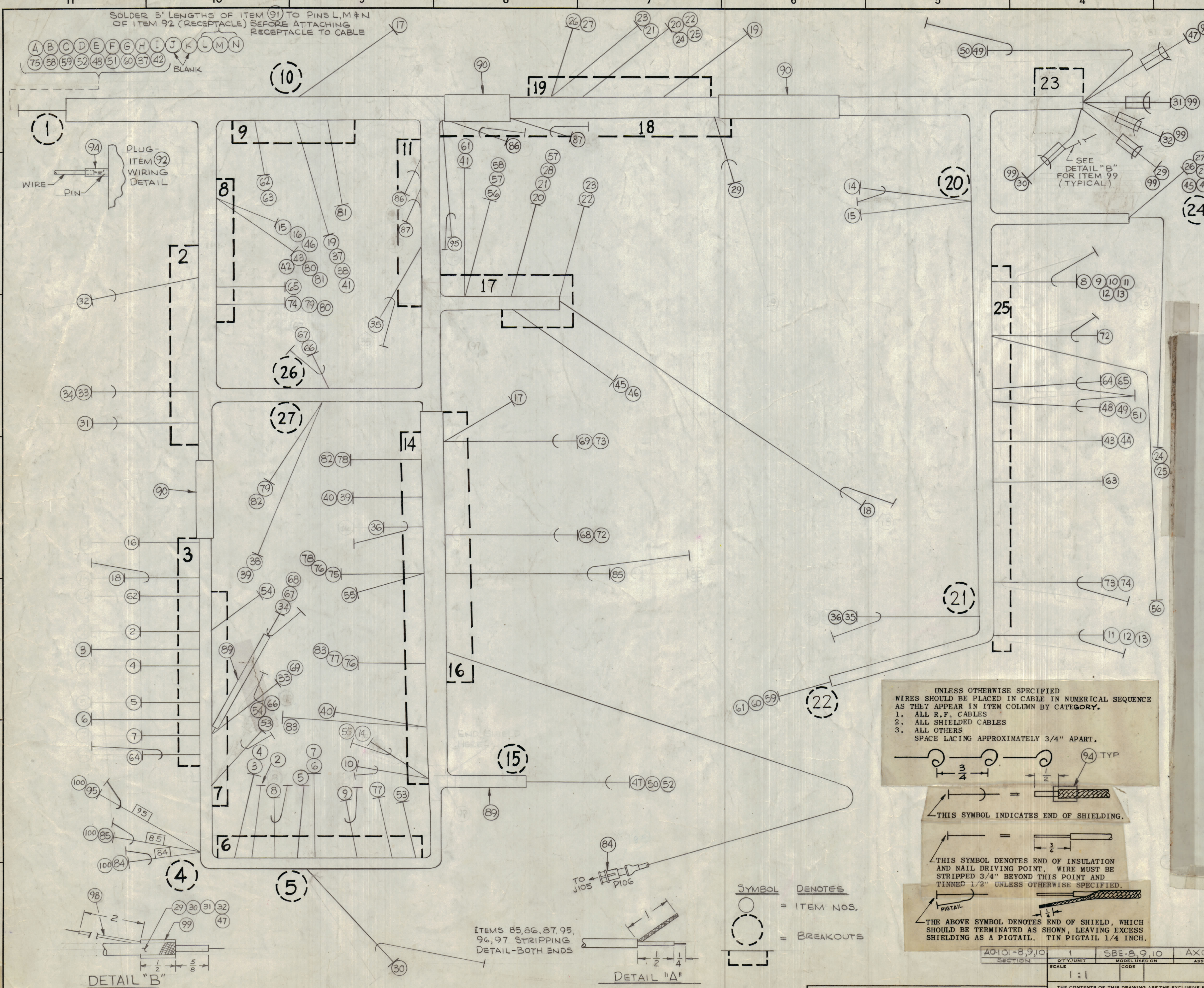


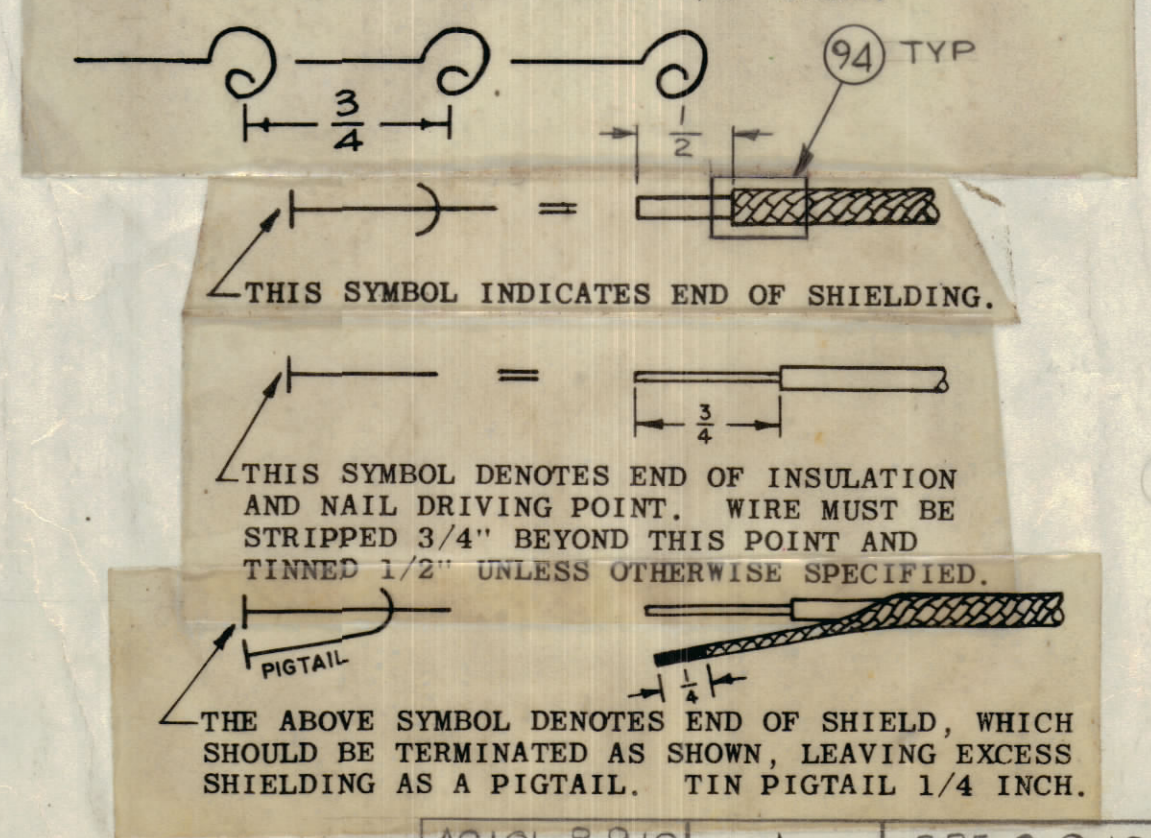
REVISIONS						
ZONE	SYM	DESCRIPTION	DATE	E.M.N. NO.	DRAFT	CHKD
2		ORIGINAL RELEASE FOR PROD	3/18/66			
A		COMPLETELY REVISED	5/25/66	16269	C.H.	
B		IT & DESCRIPTION WAS "YELLOW DOT" IT & LENGTHS	4/20/66	16440		



UNLESS OTHERWISE SPECIFIED WIRES SHOULD BE PLACED IN CABLE IN NUMERICAL SEQUENCE AS THEY APPEAR IN ITEM COLUMN BY CATEGORY.

- ALL R.F. CABLES
- ALL SHIELDED CABLES
- ALL OTHERS

SPACE LACING APPROXIMATELY 3/4" APART.



SYMBOL DENOTES

○ = ITEM NOS.

○ (with dashed line) = BREAKOUTS

NOTES

SECTION	1	2	3
QTY/UNIT	1	1	1
SCALE	1:1		
MODEL USED ON	SBE-3, 9, 10	AXG21	
CODE			
ASSY. NO.			

REQ'D.	ITEM	PART NUMBER	DESCRIPTION	SYMBOL
POSE LIST OF MATERIAL				
MATERIAL				
FINISH				
THE TECHNICAL MATERIEL CORP. MAMARONECK, NEW YORK				
TITLE: WIRING HARNESS, BRANCHED				
UNLESS OTHERWISE SPECIFIED DIMENSIONS ARE IN INCHES AND INCLUDE CHEMICALLY APPLIED OR PLATED FINISHES				
DRAWN	H. AUSTIN	DATE	1-11-66	FINAL APPROVAL
CHECKED	OCB	DATE	11-21-66	
ELECT. DES.		DATE		
MECH. DES.		DATE		
CA1201 B				REV. LTR.

CA1201 B



CA1201-B

BREAKOUT		LIST OF MATERIAL			TO DESCRIPTION		FROM
FROM TO	REQ	ITEM	PART NO.				
		1	CD101-1-MW	Cord, Nylon, Lacing			
3	6	2	MWC24(7)U4	Pin 6 (E101)	Pin 1 (T101)		
3	6	3	U5	7	2		
3	6	4	U4	8	4 (T101)		
3	6	5	U5	10	1 (T102)		
3	6	6	U4	11	2		
3	6	7	U5	Pin12 (E101)	4 (T102)		
6	25	8	SJ5	Channel 1	5 (T101)		
6	25	9	SJ4	Channel 2	Pin 5 (T102)		
14	25	10	SJ6	Mike	Standoff		
25	25	11	SJ5	Channel 1	Channel 1		
25	25	12	SJ4	Channel 2	Channel 2		
25	25	13	SJ6	Mike	Mike		
14	20	14	SJ5	Pin 6 (V101)	Term 1 (Mike Plug)		
8	20	15	U7	Pin 7 (V127)	Term 3 (Mike Plug)		
3	8	16	U7	Pin 1 (E101)	Pin 7 (V127)		
10	16	17	U4	Feed Thru	Resistor-10W		
3	17	18	SJ7	Pin 3	C208		
9	19	19	U2	R155 B+	Pin 2 (K101)		
17	19	20	U6	R155(Plate Side)	1 (V112)		
17	19	21	U4	R157	3		
17	19	22	U96	R156(Plate Side)	6		
17	19	23	U94	R158	Pin 8 (V112)		
19	24	24	MWC24(7)U6	R155(Plate Side)	Meter		
19	24	25	MWC24(7)U96	R156(Plate Side)	Meter		
19	24	26	MWC24(7)U4	R158	CA2 (Pot)		



LIST OF MATERIAL

BREAKOUT		LIST OF MATERIAL			DESCRIPTION		FROM
FROM	TO	REQ	ITEM	PART NO.	TO	DESCRIPTION	FROM
19	24		27	MWC24 (7)U94	R157	CA2 (Pot)	
17	24		28	U5	Wiper	Pin 2 (V112)	
18	23		29	SJ6	M.F.	C168, R204 (Term, B2)	
5	23		30	SJ7	R.F.	R238	
2	23		31	SJ4	L.S.B.	C148	
2	23		32	SJ5	U.S.B	C153	
2	7		33	SJ9	C156	Pin 1 (V122)	
2	7		34	SJ5	C151	Pin 1 (V123)	
11	21		35	SJ4	R236 Carrier Pot Arm	T128 PIN 3	
14	21		36	MWC24 (7)SJ5	End	Standoff (R264)	
1	9		37	MWC22 (7)U2	Pin H (J109)	Pin 2 (K101)	
9	27		38	MWC24 (7)U2	Standoff	Pin 2 (K101)	
14	27		39	U2	Standoff	R124	
14	14		40	U2	R258	R262	
9	17		41	U2	C184	Pin 2 (K101)	
1	8		42	U92	Pin I (J109)	Pin 8 (K101)	
8	25		43	U92	Exciter Switch	Pin 3 (K101)	
24	25		44	U3	Exciter Switch	SW End 220K	
17	24		45	U3	C198	SW End 220K	
8	17		46	U3	C198	Pin 7 (K101)	
15	23		47	MWC24 (7)SJ9	SW. End 100K Oven Lamp	Pin 6 (Terminal)	
1	25		48	MWC20 (7)SJ8	Pin E (J109)	AC Line Switch	
23	25		49	SJ8	AC Line Switch	Oven Ind(Socket)	
15	23		50	SJ8	Pin 7 (Term)	115VAC SW(Socket)	
1	25		51	SJ9	Pin F (J109)	S103	
1	15		52	MWC20 (7)SJ1	Pin D (J109)	Pin 4 (Term)	







## BREAKOUT LIST OF MATERIAL

FROM	TO	REQ	ITEM	PART NO.	TO	DESCRIPTION	FROM
8	8		80	MWC24 (7)U1	Pin 4 (V110)	Pin 4 (V107)	
8	9		81	U1	Pin 4 (V126)	Pin 4 (V107)	
14	27		82	U1	Pin 3 (V125)	Pin 3 (V124)	
14	14		83	MWC24 (7)U1	Pin 3 (Z108)	Pin 9 (Z123)	
4	16		84	CA350-26.00	J105	J104	
4	16		85	RG174/U	S106A Common	J103	
11	18		86		GREENDot on T127	Pin 2 (V113)	
11	18		87	RG174/U	Yellow Dot on T127	Pin 7 (V113)	
		10	88	PX100-1-.500	Ins Sleeveing		
		4	89	PX100-1-.186			
		13	90	PX100-1-.625	Ins Sleeveing		
		X	91	MWC20 (7)U0			
		9	92	MS3102A-20-27P	Conn. Receptacle, FML		
		X	93	BS100	Solder, Tin Alloy		
		X	94	PX830-18-1	Ins Sleeveing, SHRINK		
4	18	X	95	RG174/U	FROM L150	TO J113	
		10	96	PX100-1-315	Ins Sleeveing		
		X	97				
23	23	98	98	MWC20(7)U0	WIRE ELECT		
23	23	99	99	CU-159	FERRULE		
4	4	100	100	LA-101	LABEL NO'S 84, 85 & 95		