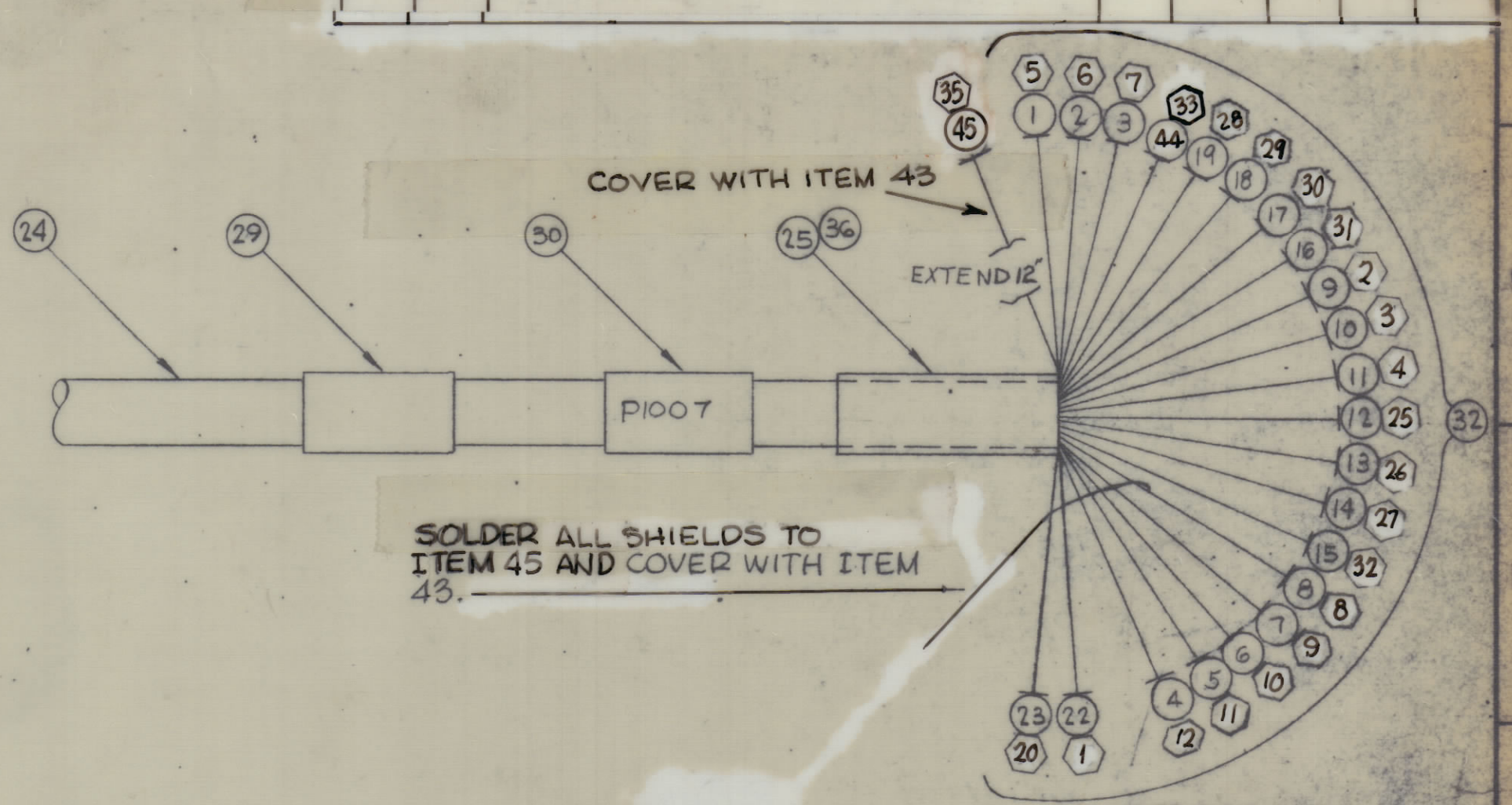
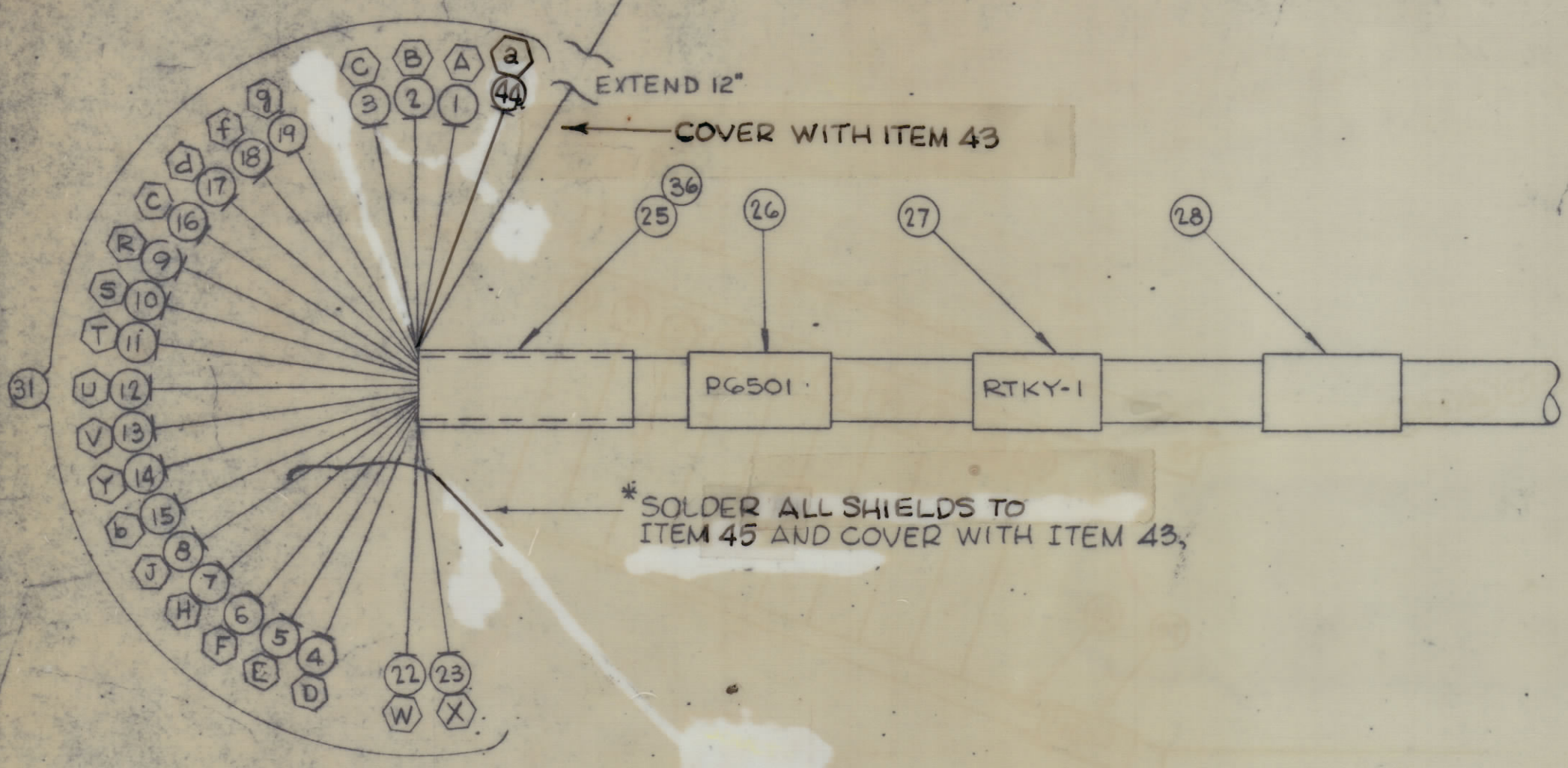


|          |               |                 |                 |
|----------|---------------|-----------------|-----------------|
| TMC PN   | "A" IN INCHES | ITEM# 28        | ITEM# 29        |
| CA1196-1 | 65"           | LA107-15-CA1196 | LA107-15-PTCA-1 |

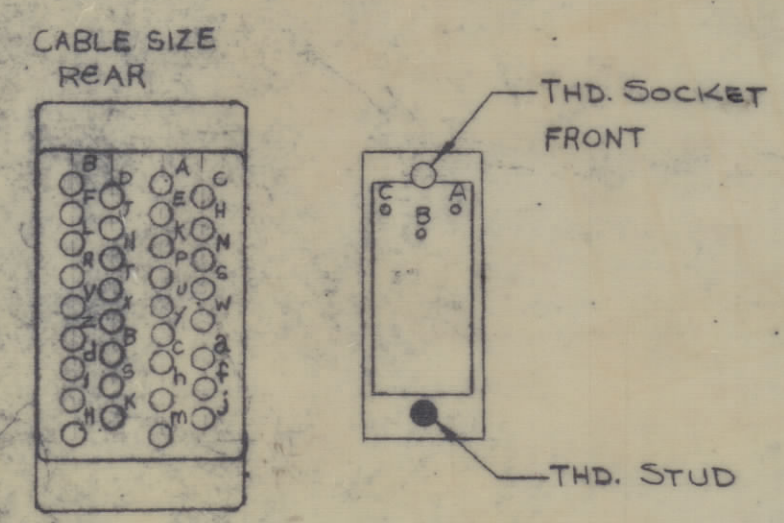
| REVISIONS |     |   |         |           |       |      |
|-----------|-----|---|---------|-----------|-------|------|
| ZONE      | SYM | DESCRIPTION   | DATE    | ENGR. NO. | DRAFT | CHKD |
| XI        |     | IT. 33 (MWC 22(7)U3, IT. 34 (PX 830-14-1) DELETED, IT. 44 RELOC. IT. 35 W/ TE120-2, IT. 43 W/ PX 830-10-1 | 2/28/66 |           | Jc    |      |
| 0         |     | ORIGINAL RELEASE FOR PRODUCTION   | 3-15-66 |           | Jc    |      |
| A         |     | DELETED IT. 20; ITEM 28 CALLOUT WAS 32.   | 7/18/66 | 16581     | JL    |      |



**NOTE**  
 (39) USED ON WIRES 22 & 23  
 (40) USED ON ALL OTHER WIRES (EXCEPT ITEM 33). **THIS END ONLY**

SOLDER ALL SHIELDS TO ITEM 45 AND COVER WITH ITEM 43.

NOTE USE ITEM 42 FOR INS. ON ALL PINS FOR ITEM 32. THIS END ONLY



DETAIL - ITEM 31

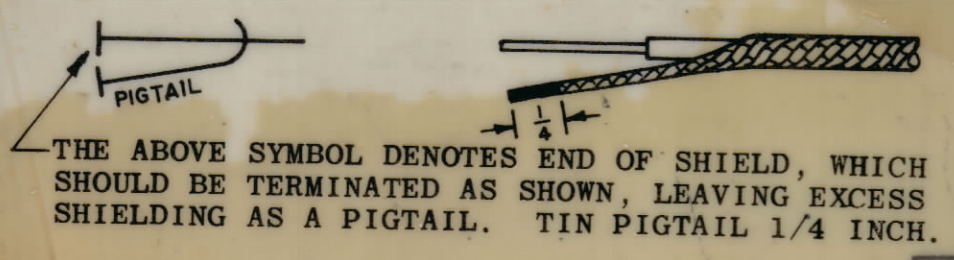
| REQ'D | ITEM | PART NUMBER     | DESCRIPTION               | SYMBOL |
|-------|------|-----------------|---------------------------|--------|
|       | 45   | WL 103-6        | BRAID, WIRE, FLAT         |        |
|       | 44   | MWC 24 (7) U3   | WIRE, ELEC, INSULATED     |        |
| X     | 43   | PX100-1-375     | INS. SLEEVING, ELECTRICAL |        |
| X     | 42   | PX 830-12-1     | INS. SLEEVING, ELECTRICAL |        |
| X     | 41   | BS 100          | SOLDER, SOFT              |        |
| 2     | 40   | PN122-2         | PIN                       |        |
| 22    | 39   | PN122-1         | PIN                       |        |
| X     | 38   | TA100-1         | INS TAPE, EL PLST         |        |
| #     | 37   | M               | M                         |        |
| 2     | 36   | MS 3420-12A     | BUSHING, RUBBER           |        |
| 2     | 35   | TE159-34160     | TERM, LUG-SPADE           |        |
|       | 34   |                 |                           |        |
|       | 33   |                 |                           |        |
| 1     | 32   | JJ 313-3H       | CONN, PLUG, MALE - 37/C   |        |
| 1     | 31   | PL 249          | CONN, PLUG, MALE - 37/C   |        |
| 1     | 30   | LA107-15-PI007  | SLEEVING, MARKER, CABLE.  |        |
| 1     | 29   | SEE CHART       |                           |        |
| 1     | 28   | SEE CHART       |                           |        |
| 1     | 27   | LA107-15-RTKY-1 |                           |        |
| 1     | 26   | LA107-15-PG501  | SLEEVING, MARKER, CABLE   |        |

SEE NOTE

○ DENOTES ITEM NO.  
 ◡ DENOTES LUG

THIS SYMBOL DENOTES END OF INSULATION AND NAIL DRIVING POINT. WIRE MUST BE STRIPPED 3/4" BEYOND THIS POINT AND TINNED 1/2" UNLESS OTHERWISE SPECIFIED.

UNLESS OTHERWISE SPECIFIED WIRES SHOULD BE PLACED IN CABLE IN NUMERICAL SEQUENCE AS THEY APPEAR IN ITEM COLUMN BY CATEGORY.  
 1. ALL R.F. CABLES  
 2. ALL SHIELDED CABLES  
 3. ALL OTHERS  
 SPACE LACING APPROXIMATELY 3/4" APART.



THE ABOVE SYMBOL DENOTES END OF SHIELD, WHICH SHOULD BE TERMINATED AS SHOWN, LEAVING EXCESS SHIELDING AS A PIGTAIL. TIN PIGTAIL 1/4 INCH.

| REQ'D | ITEM | PART NUMBER  | DESCRIPTION             | SYMBOL |
|-------|------|--------------|-------------------------|--------|
|       | 25   | PX100-1-438  | INS SLEEVING-SIZE 7/16  |        |
|       | 24   | PX100-1-263  | INS SLEEVING-SIZE 2     |        |
|       | 23   | MWC16(19)SJ1 | CABLE, POWER, SHLD/JKT  |        |
|       | 22   | MWC16(19)5J0 | CABLE, POWER, SHLD/JKT  |        |
| #     | 21   | M            | M                       |        |
|       | 20   | DELETED      |                         |        |
|       | 19   | MWC24(7)U90  | WIRE, ELEC., INSULATION |        |
|       | 18   | 98           |                         |        |
|       | 17   | 97           |                         |        |
|       | 16   | 96           |                         |        |
|       | 15   | 95           |                         |        |
|       | 14   | 94           |                         |        |
|       | 13   | 93           |                         |        |
|       | 12   | 92           |                         |        |
|       | 11   | 91           |                         |        |
|       | 10   | 0            |                         |        |
|       | 9    | MWC24(7)U9   | WIRE, ELECT, INSULATED  |        |
|       | 8    | MWC24(7)SJ8  | CABLE, SP, SHLD/JKT     |        |
|       | 7    | MWC24(7)SJ7  |                         |        |
|       | 6    | 6            |                         |        |
|       | 5    | 5            |                         |        |
|       | 4    | MWC24(7)SJ4  | CABLE, SP, SHLD/JKT     |        |
|       | 3    | MWC24(7)U3   | WIRE, ELEC, INSULATED   |        |
|       | 2    | 2            |                         |        |
|       | 1    | MWC24(7)U1   | WIRE, ELEC, INSULATED   |        |

**STURMER LIST OF MATERIAL**

**THE TECHNICAL MATERIEL CORP.**  
 MAMARONECK, NEW YORK

TITLE: CABLE ASSY. SP

UNLESS OTHERWISE SPECIFIED DIMENSIONS ARE IN INCHES AND INCLUDE CHEMICALLY APPLIED OR PLATED FINISHES

SCALE: 1 PTCA-1

DATE: 2-23-65

DATE: 3-15-66

DATE: 3-15-66

CA1196 A

THE CONTENTS OF THIS DRAWING ARE THE EXCLUSIVE PROPERTY OF THE TECHNICAL MATERIEL CORP. ITS UNAUTHORIZED USE OR REPRODUCTION IN WHOLE OR IN PART IS STRICTLY FORBIDDEN.

NOTES

CA1196 A