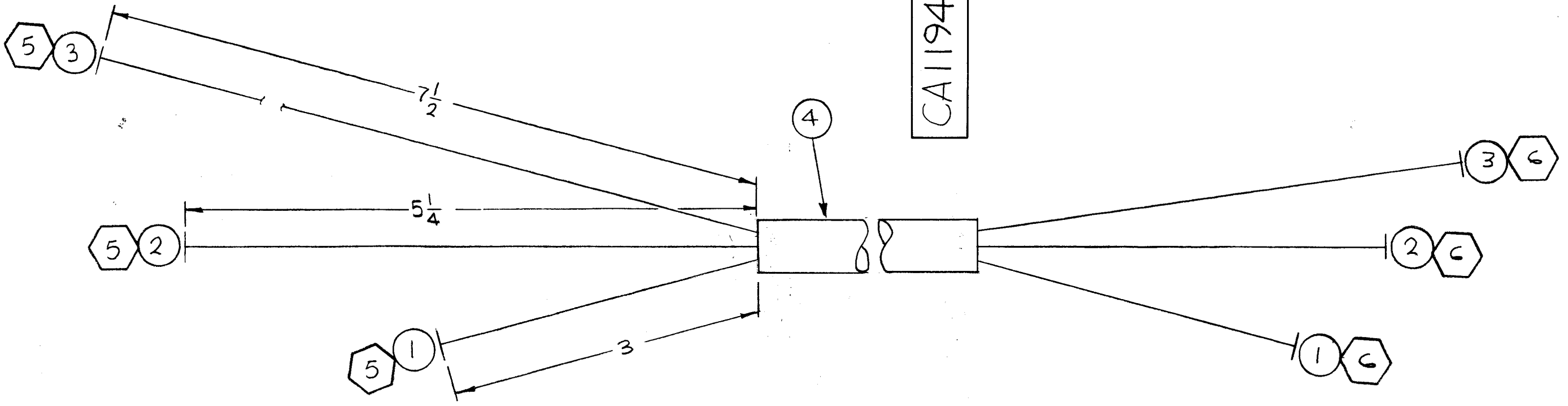
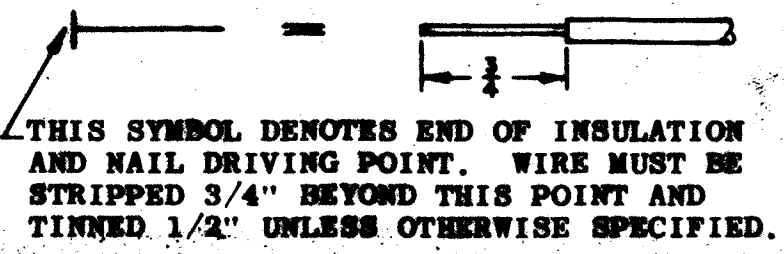
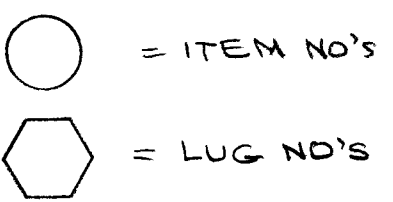


CA1194

REVISIONS						
SYM	DESCRIPTION	DATE	E.M.N. NO.	DRAFT	CHKD	APPD
Ø	ORIGINAL RELEASE FOR PRODUCTION	3-14-66	Ø	HLA		JWE



SYMBOL - DENOTES



THIS SYMBOL DENOTES END OF INSULATION AND NAIL DRIVING POINT. WIRE MUST BE STRIPPED 3/4" BEYOND THIS POINT AND TINNED 1/2" UNLESS OTHERWISE SPECIFIED.

NOTES

1	GPT-40K	
Q'TY./UNIT	MODEL USED ON	ASS'Y. NO.
SCALE	CODE	
	A	
THE CONTENTS OF THIS DRAWING ARE THE EXCLUSIVE PROPERTY OF THE TECHNICAL MATERIEL CORP. ITS UNAUTHORIZED USE OR REPRODUCTION IN WHOLE OR IN PART IS STRICTLY FORBIDDEN.		

REQ'D.	ITEM	PART NUMBER	DESCRIPTION	SYMBOL
X	7	BS100	SOLDER, TIN, ALLOY	
3	6	TE197-6-10	TERM, LUG, INS.	
3	5	TE197-6-25	TERM, LUG, INS.	
12"	4	PX100-1-625	INS. SLVG. ELECT.	
24"	3	HWC6 (27) B90	WIRE, ELECT BRD	
21"	2	HWC6 (27) B92	WIRE, ELECT BRD	
18"	1	HWC6 (27) B9	WIRE, ELECT BRD	

F. BUDETTI		LIST OF MATERIAL			
MATERIAL		THE TECHNICAL MATERIEL CORP. MAMARONECK, NEW YORK			
FINISH		TITLE CABLE, ASSY, ELECTRICAL			
UNLESS OTHERWISE SPECIFIED DIMENSIONS ARE IN INCHES AND INCLUDE CHEMICALLY APPLIED OR PLATED FINISHES		DRAWN	DATE	FINAL APPROVAL	DATE
		<i>[Signature]</i>	11-22-65	<i>[Signature]</i>	3/14/66
		CHECKED	DATE		
		<i>[Signature]</i>	3-14-66		
		ELECT. DES.	DATE		
		<i>[Signature]</i>	3-14-66	CA1194	Ø
		MECH. DES.	DATE		
				SHEET	REV. LTR.