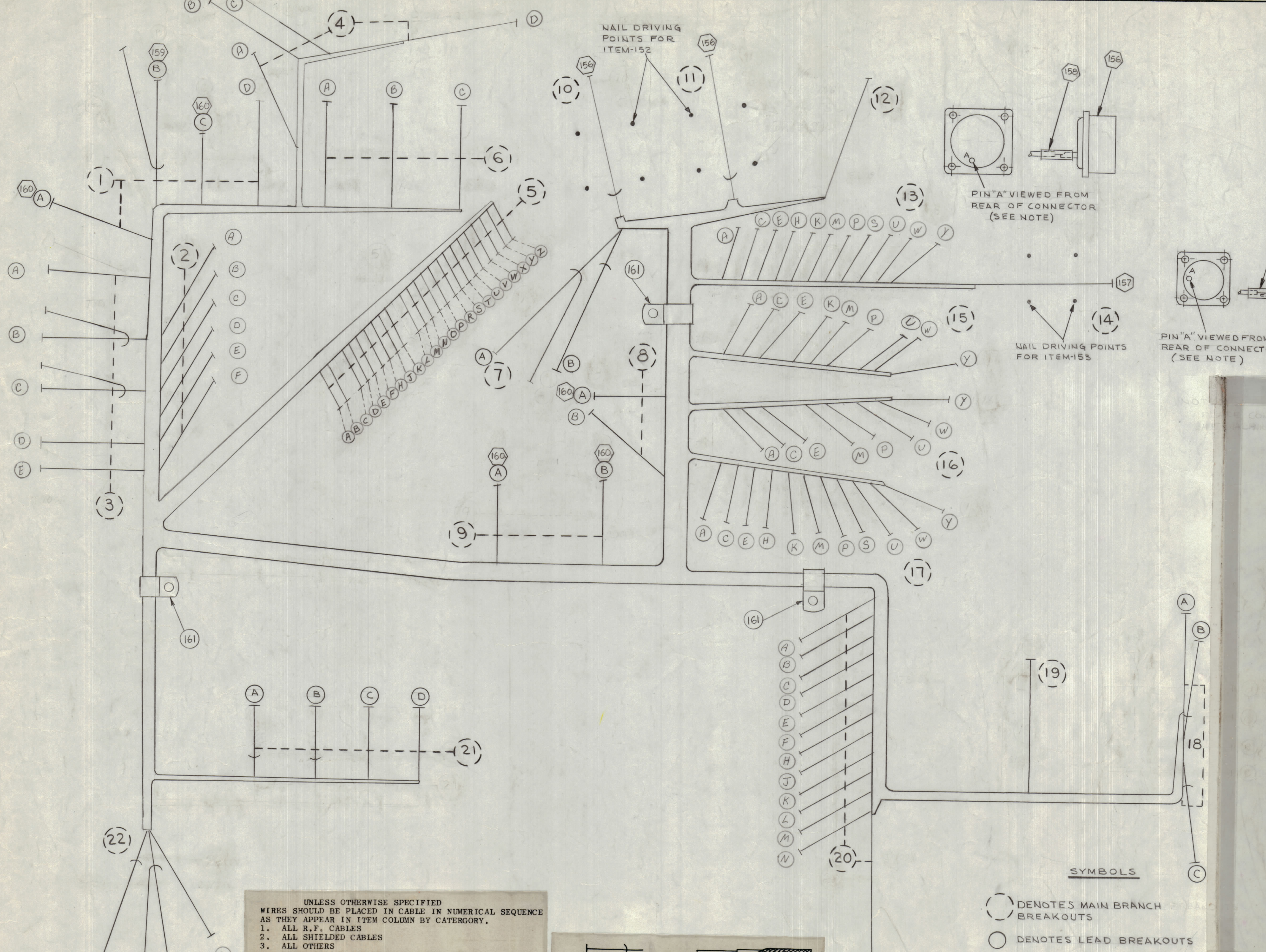


REVISIONS						
ZONE	SYM	DESCRIPTION	DATE	E.M.N. NO.	DRAFT	CHKD
	X1	REVISED BREAKOUTS-18, 19, 21; LEAD "A" BREAKOUTS ADDED LEAD A, B TO BREAKOUT-7.	3/1/66		JL	
	X2	BUILDUP CLARIFIED	4-7-66	X2	C.D.L.	
		ORIGINAL RELEASE FOR PROD	4/1/66			
	A	IT 28 "A" WAS 6-D ADDED TO ITEM 154 IT 154 "W" WAS ADDED TO DEST COL IT 152 & 159 WERE IN DEST COL IT 152 WAS ADDED	5/1/66	16234	WJO	WJO
	B	ON B/M (1 OF 3) ITEM 12 & 13 REVISED	6-8-66	16356	WJO	WJO



NOTE:
PLACE CONNECTORS OVER NAIL DRIVING POINTS WITH "A" PINS IN POSITIONS SHOWN.

PIN "A" VIEWED FROM REAR OF CONNECTOR (SEE NOTE)

NAIL DRIVING POINTS FOR ITEM-153

- SYMBOLS**
- DENOTES MAIN BRANCH BREAKOUTS
 - DENOTES LEAD BREAKOUTS
 - ⬡ DENOTES ITEM NUMBERS

UNLESS OTHERWISE SPECIFIED WIRES SHOULD BE PLACED IN CABLE IN NUMERICAL SEQUENCE AS THEY APPEAR IN ITEM COLUMN BY CATEGORY.

- ALL R.F. CABLES
- ALL SHIELDED CABLES
- ALL OTHERS

SPACE LACING APPROXIMATELY 3/4" APART.

THE ABOVE SYMBOL DENOTES END OF SHIELD, WHICH SHOULD BE TERMINATED AS SHOWN, LEAVING EXCESS SHIELDING AS A PIGTAIL. TIN PIGTAIL 1/4 INCH.

THIS SYMBOL DENOTES END OF INSULATION AND NAIL DRIVING POINT. WIRE MUST BE STRIPPED 3/4" BEYOND THIS POINT AND TINNED 1/2" UNLESS OTHERWISE SPECIFIED.

THIS SYMBOL INDICATES END OF SHIELDING.

NOTES

I		RTPH-1	
QTY/UNIT	MODEL USED ON	ASS'Y. NO.	
SCALE	CODE		
1/1			

REQ'D.	ITEM	PART NUMBER	DESCRIPTION	SYMBOL
FE. EATON LIST OF MATERIAL				
MATERIAL				
FINISH				
THE TECHNICAL MATERIEL CORP. MAMARONECK, NEW YORK				
TITLE				
WIRING HARNESS, BRANCHED				
UNLESS OTHERWISE SPECIFIED DIMENSIONS ARE IN INCHES AND INCLUDE CHEMICALLY APPLIED OR PLATED FINISHES	DRAWN	DATE	FINAL APPROVAL	DATE
DECIMALS ±.01 FRACTIONS ± 1/64	W.M. McNEAN	4/16/66	W.M. McNEAN	4/16/66
ANGLES ± 0° 30'	CHECKED	DATE		
	WJO	4/16/66		
ELECT. DES.	DATE			
MECH. DES.	DATE			
	4/16/66			
			CALL 188	B

REQ	ITEM	PART NO.	BREAKOUT		DESTINATION		DESCRIPTION
			FROM	TO	FROM	TO	
1		MWC22 (7) SJ 8	1-B	21-B	J1001	F1003	
2			1-B	21-A	J1001	F1004	
3			22	21-B	S1001	F1003	
4			22	21-A	S1001	F1004	
5			22	3-B	S1001	T1001-1	
6		MWC22 (7) SJ 9	22	3-C	S1001	T1001-3	
7		MWC24 (7) U 7	6-B	3-D	F1006	T1001-5	
8			22-C	3-E	DS1001	T1001-6	
9			22-C	3-D	DS1001	T1001-5	
10			20-A	3-E	TB1001-1	T1001-6	
11			20-B	6-B	TB1001-2	F1006	
12			13-C	20-A	J1008-3	TB1001-1	
13			6-B	10	F1006	J1002-A	
14			3-E	10	T1001-6	J1002-B	
15			18-C	20-A	S1002-A-Com	TB1001-1	
16			19	20-B	S1003-Lamp	TB1001-2	
17			18-C	19	S1002-A-4	S1003-Lamp	
18			10	13-H	J1002-C	J1008-J	
19		MWC24 (7) U 93	10	13-E		J1008-E	
20		LWC26 (7) U	10	20-C		TB1001-3	
21			10	20-D		↑ -4	
22			10	20-E		↓ 5	
23			10	20-F		↓ 6	
24			10	20-H		↓ 7	
25			10	20-J	J1002-L	TB1001-8	
26			10	20-K	J1002-M	TB1001-9	
27		LWC26 (7) U 26	10	20-L		TB1001-10	
28		MWC24 (7) U 91	10	13-C		J1008-D	
29			10	13-K		J1008-K	
30			10	8-A		C1002 (-)	
31			10	13-E	J1002-T	J1008-F	
32			5-L	2-A	A4363-12	T1001-7	
33			5-M	2-B	A4363-13	T1001-8	
34			5-P	1-A	A4363-16	C1003 (+)	
35			21-C	1-A	F1002	C1003 (+)	
36			1-A	6-A	C1003 (+)	F1007	
37			5-K	21-C	A4363-10	F1002	
38			5-R	6-A	A4363-17	F1007	
39			5-0	17-W	A4363-15	J1005-20	
40			5-B	2-C	A4363-2	T1001-9	
41			5-C	2-D	A4363-4	T1001-10	
42			5-A	1-C	A4363-1	C1001 (-)	
43			21-D	1-C	F1008	C1001 (-)	
44			21-D	1-C	F1001	C1001 (-)	
45			5-E	21-D	A4363-6	F1008	
46			5-Z	21-D		F1001	
47			5-H	4-B		CR1001(C)	
48			5-V	4-D		Q1002(C)	
49			5-U	4-C		CR1002(C)	
50			5-F	4-D	S4363-7	Q1002(E)	
51			4-D	8-A	Q1002(E)	C1002 (-)	
52			2-E	5-X	T1001-11	A4363-23	
53			2-F	5-Y	T1001-12	A4363-24	
54		MWC24 (7) U	9-A	5-W	C1005 (-)	A4363-22	

REQ	ITEM	PART NO.	BREAKOUT		DESTINATION OR DESCRIPTION	TO
			FROM	TO		
55		MWC24 (7) U 5	9-A	6-C	C1005 (-)	F1005
56			6-C	5-S	F1005	A4363-18
57			17-W	16-W	J1005-20	J1006-20
58			15-W	16-W	J1007-20	J1006-20
59			13-W	5-0	J1008-20	A4363-15
60		MWC24 (7) U 2	20-M	5-0	TB1001-11	A4363-15
61		LWC26 (7) U 26	20-L	13-S	TB1001-10	J1008-T
62			5-J	11	A4363-9	J1003-A
63			5-D	13-M	A4363-5	J1008-M
64			11	13-M	J1003-B	J1008-M
65			11	13-A	J1003-C	J1008-B
66		LWC26 (7) U 1	20-J	13-M	TB1001-8	J1008-11
67		MWC24 (7) U 6	8-A	17-C	C1002 (-)	J1005-4
68			16-C	17-C	J1006-4	J1005-4
69			16-C	15-C	J1006-4	J1007-4
70			13-C	15-C	J1008-4	J1007-4
71			13-C	8-A	J1008-4	C1002 (-)
72			5-S	11	A4363-18	J1003-D
73			5-T	3-A	A4363-19	Grd (T1001)
74			17-Y	17-A	J1005-22	J1005-A
75		MWC24 (7) U 0	16-A	17-A	J1006-1	J1005-1
76		MWC24 (7) U 0	16-A	16-Y	J1006-A	J1006-22
77			16-A	15-A	J1006-1	J1007-1
78			15-A	15-Y	J1007-1	J1007-22
79			17-A	8-B	J1005-1	Grd (C1002)
80			13-A	13-Y	J1008-1	J1008-22
81			13-A	8-B	J1008-1	Grd (C1002)
82			8-A	8-B	C1002-(+)	Grd (C1002)
83			9-A	8-B	C1005(+)	Grd (C1002)
84			5-N	3-A	A4363-14	Grd (C1002)
85			1-A	3-A	C1003(-)	Grd (T1001)
86			1-C	3-A	C1001(+)	Grd (T1001)
87		MWC24 (7) U 0	9-B	8-B	C1004(+)	Grd (C1002)
88		LWC26 (7) U 8	17-Y	11	J1005-Y	J1003-E
89			17-W	11	W	J1003-F
90			17-U	20-D	V	TB1001-4
91			17-U	20-H	U	TB1001-7
92			17-S	20-E	T	TB1001-5
93			17-S	16-C	S	J1006-C
94			17-P	16-A	R	J1006-B
95			17-P	11	P	J1003-H
96			17-M	11	N	J1003-J
97			17-M	11	M	J1003-K
98			17-K	11	L	J1003-L
99			17-K	16-E	K	J1006-E
100		LWC26 (7) U 97	17-H	11	J1005-J	J1003-M
101			17-H	16-C	J1005-H	J1006-D
102			17-E	16-M	E	J1006-M
103			17-C	20-C	D	TB1001-3
104			17-C	15-C	C	J1007-3
105			17-A	15-C	B	J1007-C
106		LWC 26 (7) U 5	17-Y	20-F	J1005-21	TB1001-6

REQ	ITEM	PART NO.	BREAKOUT		DESTINATION	OR	DESCRIPTION
			FROM	TO			
	107	LWC26 (7) U93	17-P	11	J1005-13		J1003-N
	108		17-K	11	↑ 10		J1003-P
	109		17-K	11	↑ 9		J1003-R
	110		17-H	15Y	↑ 8		J1007-Y
	111		17-H	18-A	↑ 8		S1002-F-1
	112		17-E	16-P	↑ 5		J1006-R
	113		17-C	18-B	↑ 3		S1002-C-4
	114		17-A	20-P	↑ J1005-2		J1009
	115		16-Y	15-K	↑ J1006-Y		J1007-L
	116		16U	15-U	↑ V		J1007-U
	117		16-M	15-U	↑ N		J1007-V
	118		16-Y	13-C	↑ 21		J1008-C
	119		16-C	18-B	↑ J1006-3		S1002-D-Com.
	120		15-W	18-A	↑ J1007-W		S1002-F-Com.
	121		15-W	11	↑ X		J1003-S
	122		15-E	18B	↑ E		S102-C-Com.
	123		15-C	18-A	↑ B		S1002-F-4
	124	LWC26 (7) U92	15-A	11	↑ J1007-2		J1003-T
	125	MWC24 (7) U 6	5-D	4-A	↑ A4363-5		Q1001 (E)
	126		5-E	4-A	↑ A4363-6		Q1001 (C)
	127		20-P	3-A	↑ J1009		Grd (1002)
	128		4-A	4-B	↑ Q1001 (B)		CR1001 (C)
	129		13-Y	14	↑ J1008-Y		J1004-A
	130		13-W	12	↑ X		F1009
	131		13U	14	↑ U		J1004-C
	132		13U	18-B	↑ V		S1002-D-4
	133		13-P	14	↑ R		J1004-D
	134	MWC24 (7) U95	13-E	20-N	↑ F		TB1001-12
	135	LWC26 (7) U 8	13-H	20-K	↑ J1008-H		TB1001-9
	136		20-P	19	↑ J1009		S1003-N.0.
	137		13-Y	14	↑ J1008-21		J1004-E
	138		19	20-P	↑ S1003-N.0.		J1009
	139		13-A	18-A	↑ J1008-2		S1002-E-Com.
	140	LWC26 (7) U 3	11	18-A	↑ J1003-U		S1002-E-2
	141	MWC24 (7) U98	12	14	↑ F1009		J1004-B
	142	MWC22 (7) SJ8	3-B	18-C	↑ T1001-1		S1002-B-Com
	143		3-C	7-B	↑ T1001-3		C1006
	144		11	7-A	↑ J1003-W		C1006
	145		18-C	7-A	↑ S1002-B-2		C1006
	146	MWC22 (7) SJ98	11	7-A	↑ J1003-X		C1006
	147	MWC22 (7) U 1	9-B	5-U	↑ C1004 (-)		A4363-20
	148		3-A	4-C	↑ Grd (T1001)		CR1002 (A)
	149		4-D	4-C	↑ Q1002-(B)		CR1002 (C)
	150	MWC22 (7) U 0	20P	8-B	↑ J1009		Grd (C1002)
	151	MWC22 (7) U98	16-P	10	↑ J1006-P		J1002-V
	152		16-W	10	↑ J1006-X		J1002-W
	153		8-A	10	↑ C1002 (+)		J1002-Y
	154	MWC22 (7) U2	16-W	10	↑ J1006-20		J1002-U
X	155	CD101-1MW					Cord, Nylon, Lacing
2	156	JJ200-3					Connector, Receptacle, Female
1	157	JJ200-8					Connector, Receptacle, Male
X	158	PX830-20-1					Sleeving, Shrink
2	159	TE159-32957					Terminal Lug-Ins. (#6 Screw)
10	160	TE159-34161					Terminal Lug-Ins. (#10 Screw)
3	161	CUI02-5					Clamp, Loop
	162	MWC24 (7) U95	17-A	10	↑ J1005-2		J1002-a