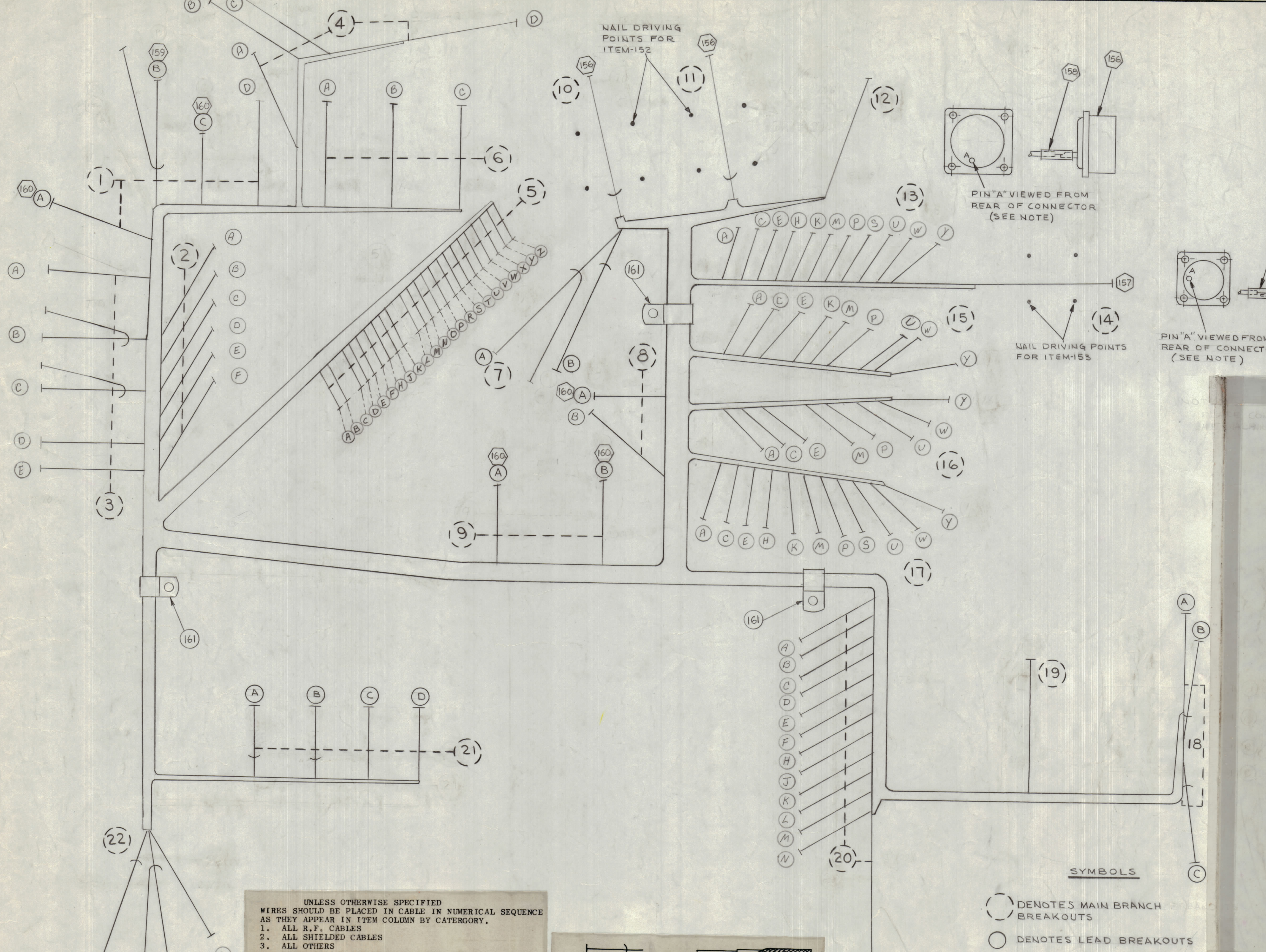


| REVISIONS | | | | | | |
|-----------|-----|---|--------|------------|--------|------|
| ZONE | SYM | DESCRIPTION | DATE | E.M.N. NO. | DRAFT | CHKD |
| | X1 | REVISED BREAKOUTS-18, 19, 21; LEAD "A" BREAKOUTS ADDED LEAD A, B TO BREAKOUT-7. | 3/1/66 | | JL | |
| | X2 | BUILDUP CLARIFIED | 4-7-66 | X2 | C.D.L. | |
| | | ORIGINAL RELEASE FOR PROD | 4/1/66 | | | |
| | A | IT 28 "A" WAS 6-D ADDED TO ITEM 154 IT 154 "W" WAS ADDED TO DEST COL IT 152 & 159 WERE IN DEST COL IT 152 WAS ADDED | 5/1/66 | 16234 | WJO | WJO |
| | B | ON B/M (1 OF 3) ITEM 12 & 13 REVISED | 6-8-66 | 16356 | WJO | WJO |



NOTE:
PLACE CONNECTORS OVER NAIL DRIVING POINTS WITH "A" PINS IN POSITIONS SHOWN.

- SYMBOLS**
- DENOTES MAIN BRANCH BREAKOUTS
 - DENOTES LEAD BREAKOUTS
 - ⬡ DENOTES ITEM NUMBERS

UNLESS OTHERWISE SPECIFIED WIRES SHOULD BE PLACED IN CABLE IN NUMERICAL SEQUENCE AS THEY APPEAR IN ITEM COLUMN BY CATEGORY.

1. ALL R.F. CABLES
2. ALL SHIELDED CABLES
3. ALL OTHERS

SPACE LACING APPROXIMATELY 3/4" APART.

THE ABOVE SYMBOL DENOTES END OF SHIELD, WHICH SHOULD BE TERMINATED AS SHOWN, LEAVING EXCESS SHIELDING AS A PIGTAIL. TIN PIGTAIL 1/4 INCH.

THIS SYMBOL DENOTES END OF INSULATION AND NAIL DRIVING POINT. WIRE MUST BE STRIPPED 3/4" BEYOND THIS POINT AND TINNED 1/2" UNLESS OTHERWISE SPECIFIED.

THIS SYMBOL INDICATES END OF SHIELDING.

NOTES

| | | | |
|----------|---------------|------------|--|
| I | | RTPH-1 | |
| QTY/UNIT | MODEL USED ON | ASS'Y. NO. | |
| SCALE | CODE | | |
| 1/1 | | | |

| REQ'D. | ITEM | PART NUMBER | DESCRIPTION | SYMBOL |
|---|-----------|-------------|----------------|------------|
| FE. EATON LIST OF MATERIAL | | | | |
| MATERIAL | | | | |
| FINISH | | | | |
| THE TECHNICAL MATERIEL CORP. MAMARONECK, NEW YORK | | | | |
| TITLE | | | | |
| WIRING HARNESS, BRANCHED | | | | |
| UNLESS OTHERWISE SPECIFIED DIMENSIONS ARE IN INCHES AND INCLUDE CHEMICALLY APPLIED OR PLATED FINISHES | DRAWN | DATE | FINAL APPROVAL | DATE |
| CHECKED | M. McNEAN | 4/16/66 | WJO | 4/16/66 |
| ELECT. DES. | DATE | | | |
| MECH. DES. | DATE | | | |
| DECIMALS ± 1/64 FRACTIONS ± 1/64 ANGLES ± 0° 30' | | | | TOLERANCES |
| XXX ± .005 | | | | |
| THE CONTENTS OF THIS DRAWING ARE THE EXCLUSIVE PROPERTY OF THE TECHNICAL MATERIEL CORP. ITS UNAUTHORIZED USE OR REPRODUCTION IN WHOLE OR IN PART IS STRICTLY FORBIDDEN. | | | | REV. LTR. |