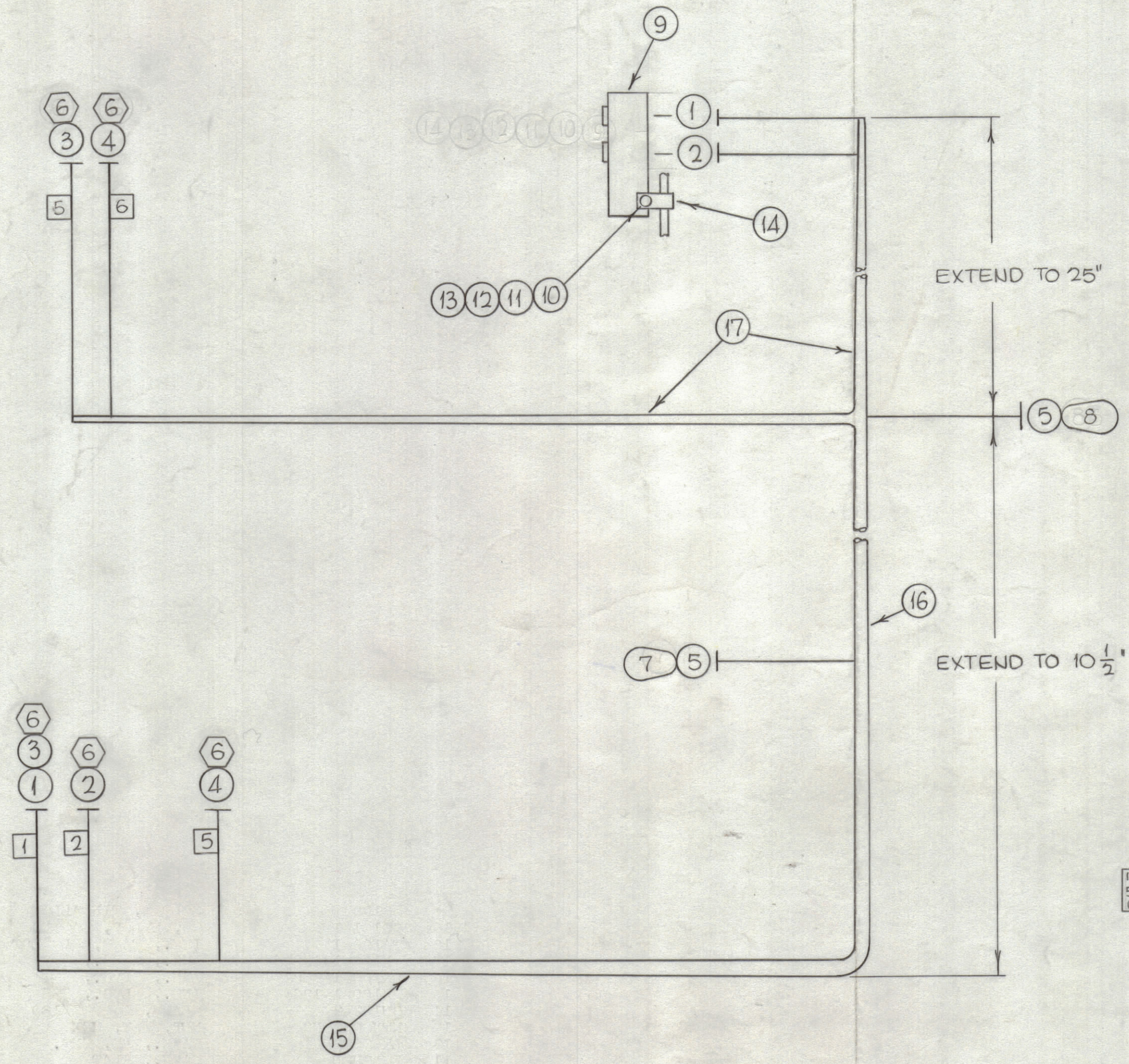


REVISIONS					
ZONE	SYM	DESCRIPTION	DATE	E.M.N. NO.	APPD
Ø		ORIGINAL RELEASE FOR PROD	11/18/65		
A		ITEM 7 & 8 SWITCHED	1-24-66	15662	



○ = ITEM NO.
 ⬡ = TERMINAL LUG
 ⊕ = CONNECTOR OR PLUG

1, 2
5 (2 REQ)
6

REQ'D.	ITEM	PART NUMBER	DESCRIPTION	SYMBOL
x	21	LA101-	MARKER, WIRE	
	20	BS100	SOLDER, TIN ALLOY	
	19	CD101-1MW	CD, NYLON, LACING	
	18	TA100-1	INS., TAPE, EL-PLST	
	17	PX100-1-133	INS., SLVG., SZ8	
	16	PX100-1-208	INS., SLVG., SZ4	
	15	PX100-1-186	INS., SLVG., SZ5	
	14	CU102-2	CLAMP, LOOP 3/16D	
	13	NTH0632BNS	NUT, PLN, HEX	
	12	LWEO6MRN	WASH., LK, EXT.	
	11	FW06HBN	WASH., FLAT	
	10	SCBPO632BNG	SCR, MACH.	
	9	TM105-2AR	TERM., BD-FNG	
1	8	PL24-1	CONN, PLUG, BNC	
1	7	PL47-2	PLUG, TIP	
5	6	TE120-2	TERM., LUG-SPADE	
	5	RC-174/U	CBL, RF	
	4	MWC20 (7) U96	WIRE, ELEC., INS.	
	3	↓ U9	↓	
	2	↓ U6	↓	
	1	MWC20 (7) U9	WIRE, ELEC., INS.	

STURMER		LIST OF MATERIAL	
MATERIAL		THE TECHNICAL MATERIEL CORP. MAMARONECK, NEW YORK	
FINISH		TITLE WIRING HARNESS, BRANCHED	

DDR-74		
Q'TY./UNIT	MODEL USED ON	ASS'Y. NO.
SCALE	CODE	

UNLESS OTHERWISE SPECIFIED DIMENSIONS ARE IN INCHES AND INCLUDE CHEMICALLY APPLIED OR PLATED FINISHES		DRAWN	DATE	FINAL APPROVAL	DATE
DECIMALS .X ± .05 .XX ± .01 .XXX ± .005	TOLERANCES	Jc	11-17-65	R. H. Day	11/18/65
FRACTIONS ± 1/64 ANGLES ± 0° 30'		Checked	DATE	DATE	DATE
		ELECT. DES.	11-18-65	11-18-65	11-18-65
		MECH. DES.	DATE	DATE	DATE

NOTES

THE CONTENTS OF THIS DRAWING ARE THE EXCLUSIVE PROPERTY OF THE TECHNICAL MATERIEL CORP. ITS UNAUTHORIZED USE OR REPRODUCTION IN WHOLE OR IN PART IS STRICTLY FORBIDDEN.

CA1184 A